

STATE OF ILLINOIS
DEPARTMENT OF TRANSPORTATION

F.A.P. RTE.	SECTION	COUNTY	TOTAL SHEETS	SHEET NO.
332	D9 PATCH 2023-1	WHITE	8	1
		ILLINOIS	CONTRACT NO. 78974	

FOR INDEX OF SHEETS, SEE SHEET NO. 3
FOR SUMMARY OF QUANTITIES, SEE SHEET NO. 4

**PROPOSED
HIGHWAY PLANS**

FAP ROUTE 332 (IL 1)
SECTION D9 PATCH 2023-1
PATCHING

TRAFFIC DATA

	2021	2023	2033	2043
P.V.s	5,150	5,250	5,800	6,410
S.U.s	400	410	450	500
M.U.s	950	970	1,070	1,180
ADT	6,500	6,630	7,320	8,090
DHV	585	595	660	730

TOWNSHIPS

GRAY

DESIGN DESIGNATION : N/A
COORDINATE SYSTEM : ILLINOIS COORDINATE SYSTEM, EAST ZONE

POSTED SPEED : 55 MPH

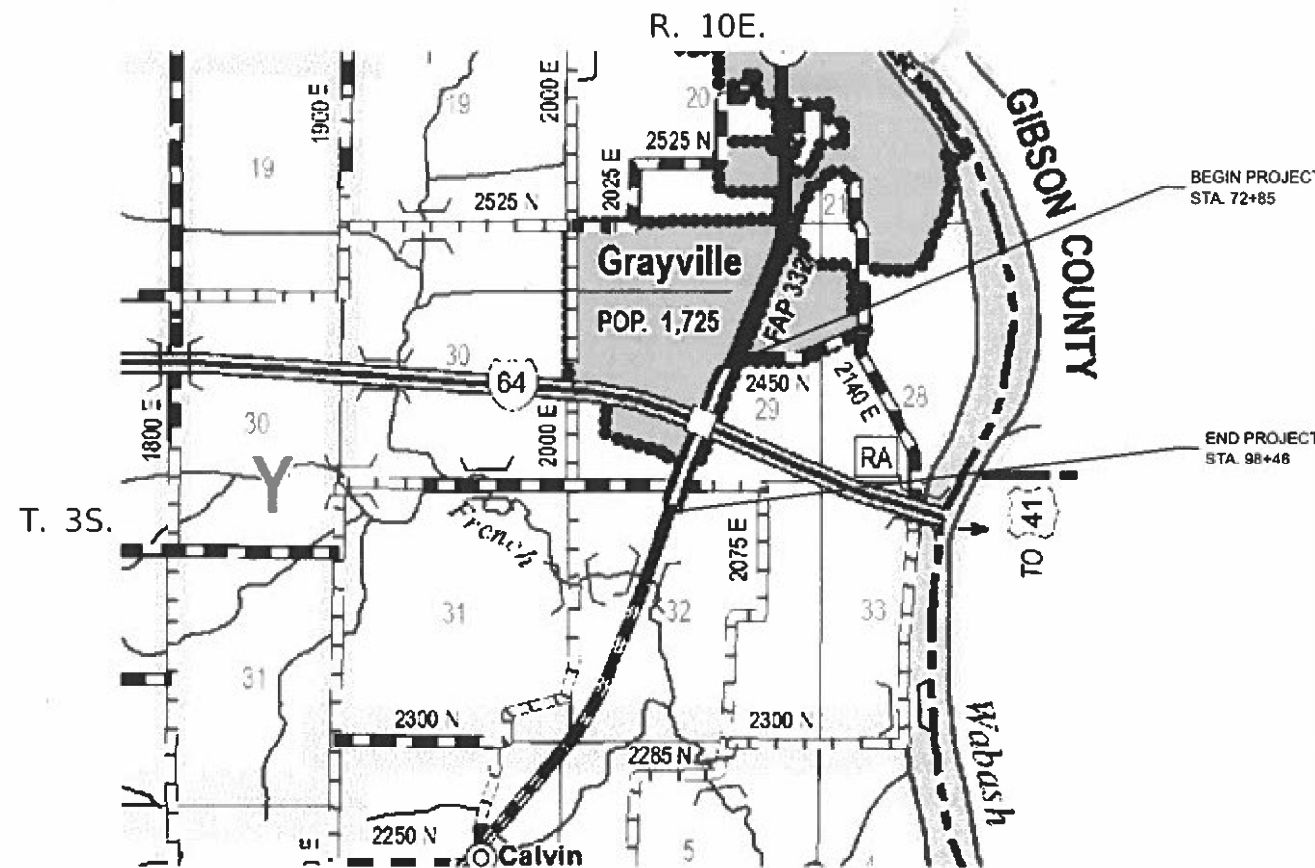
J.U.I.E.
JOINT UTILITY LOCATION INFORMATION FOR EXCAVATION
1-800-892-0123
OR 811

PROJECT ENGINEER VALERIE ROLLA
PROJECT DESIGNER DACODA BLOCKLEY

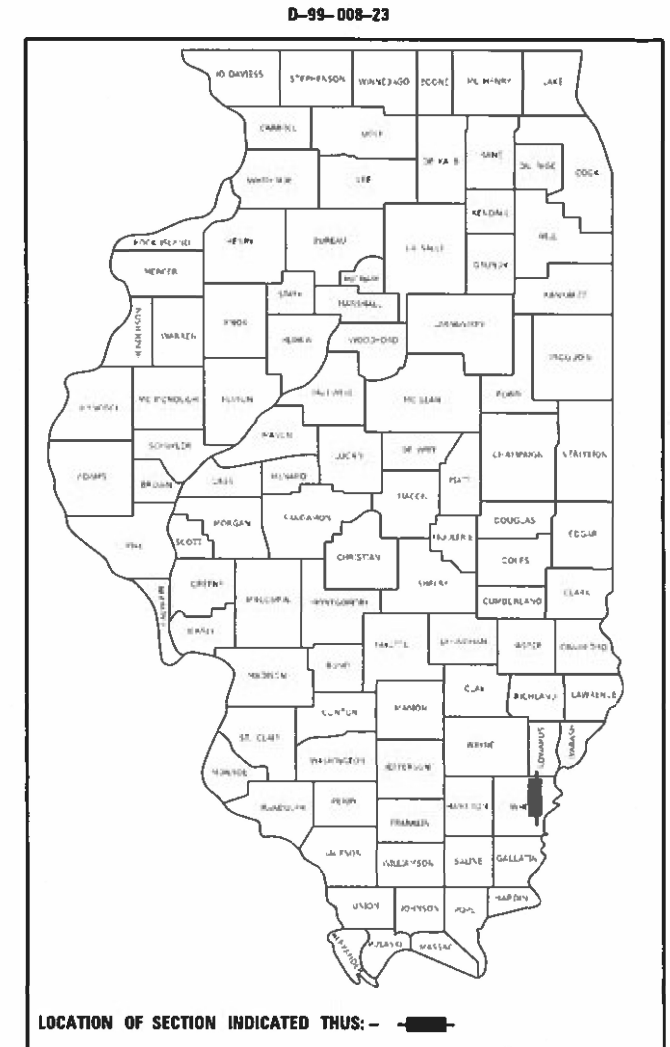
CONTRACT NO. 78974

WHITE COUNTY

C-99-018-23



GROSS LENGTH = 3045 FT. = 0.6 MILES
NET LENGTH = 3045 FT. = 0.6 MILES



STATE OF ILLINOIS
DEPARTMENT OF TRANSPORTATION

SUBMITTED March 29 20 23
Kirk H. Brown
REGION FIVE ENGINEER

May 12, 2023 [Signature]
ENGINEER OF DESIGN AND ENVIRONMENT

May 12, 2023 [Signature]
DIRECTOR OF HIGHWAYS PROJECT IMPLEMENTATION

**PRINTED BY THE AUTHORITY
OF THE STATE OF ILLINOIS**

MODEL: Signature (Sheet)
FILE NAME: p:\work\m\benley.com\PM\DOT\Documents\DOT Offices\District 9\ROAD Project\178974\CADD\8\8\CADD\8\8\8974-SPRAC-over.dwg

Prepared By: Chak Steir
DISTRICT STUDIES & PLANS ENGINEER

Examined By: _____
DISTRICT LAND ACQUISITION ENGINEER

Examined By: Carrie Nelson
DISTRICT PROGRAM DEVELOPMENT ENGINEER

Examined By: R. [Signature]
DISTRICT OPERATIONS ENGINEER

Examined By: Dave [Signature]
DISTRICT PROJECT IMPLEMENTATION ENGINEER

Examined By: Dave [Signature]
DISTRICT CONSTRUCTION ENGINEER

Examined By: Aan Hays
DISTRICT MATERIALS ENGINEER

USER NAME = Dacoda.Blocley	DESIGNED -	REVISED -
PLOT SCALE = 0.16666633' / in.	CHECKED -	REVISED -
PLOT DATE = 3/27/2023	DATE -	REVISED -

**STATE OF ILLINOIS
DEPARTMENT OF TRANSPORTATION**

SIGNATURE SHEET

SCALING SCALE SHEET 2 OF 8 SHEETS STA. TO STA.

F.A.P. RTE.	SECTION	COUNTY	TOTAL SHEETS	SHEET NO.
332	D9 PATCH 2023-1	WHITE	8	2
CONTRACT NO. 78974				
ILLINOIS FED. AID PROJECT				

INDEX OF SHEETS

- 1 COVER
- 2 SIGNATURE SHEET
- 3 INDEX, GENERAL NOTES, STANDARDS
- 4 SUMMARY OF QUANTITIES
- 5 TYPICAL SECTIONS
- 6 PATCHING SCHEDULE
- 7 PATCHING SCHEDULE
- 8 PLAN SHEET

HIGHWAY STANDARDS

- 000001-08 STANDARDSYMBOLSABBREVIATIONS-PATTERNS-001
- 001001-02 AREASOFREINFREBARS
- 001006 DECIMALOFINCH-FOOT
- 442101-09 CLASSBPATCHES
- 442201-03 CLASSC-DPATCHES
- 701006-05 OFFRDOP-2L2W-15FTTOEOP
- 701011-04 OFFRDMOVINGOP-2L2W-DAYONLY
- 701201-05 LNCLOSURE2L2W-DAYONLY
- 701451-05 RAMPCLASUREFREEWAYEXP
- 701456-05 PARTIALEXITRAMPCLASUREFREEWAYEXPRESSWAY
- 701901-08 TRAFCTRLDEVICES
- 420001-10 PAVEMENT JOINTS
- 420701-03 PAVEMENT WELDED WIRE REINFORCEMENT

REV. - MS

MODEL: INDEX_STANDARDS_GENERAL NOTES (Sheet)
 FILE NAME: P:\disc\pawley\com\pawley\Documents\DOT Office\District 9\RD Projects\78974\CDData\CDsheets\078974-Sub-index_GenNotes.dgn

USER NAME = Dacoda.Blockley	DESIGNED -	REVISED -
	DRAWN -	REVISED -
PLOT SCALE = 0.16666633 */ in.	CHECKED -	REVISED -
PLOT DATE = 3/27/2023	DATE -	REVISED -

**STATE OF ILLINOIS
DEPARTMENT OF TRANSPORTATION**

INDEX, STANDARDS, GENERAL NOTES

SCALE NO SCALE SHEET 3 OF 8 SHEETS STA. TO STA.

F.A.P. RTE.	SECTION	COUNTY	TOTAL SHEETS	SHEET NO.
332	D9 PATCH 2023-1	WHITE	8	3
CONTRACT NO. 78974				
ILLINOIS FED. AID PROJECT				

SUMMARY OF QUANTITIES

COUNTY:	WHITE CO
ROUTE:	FAP 332
FUNDING:	100% STATE
LOCATION:	RURAL
	ROADWAY
	0005

CODE NUMBER	ITEM DESCRIPTION	UNIT	QUANTITY
42000060	WELDED WIRE REINFORCEMENT	SQ YD	673
44201025	CLASS B PATCHES, TYPE IV, 14 INCH	SQ YD	673
44201299	DOWEL BARS 1 1/2"	EACH	426
44201403	CLASS C PATCHES, TYPE II, 14 INCH	SQ YD	213
44201407	CLASS C PATCHES, TYPE III, 14 INCH	SQ YD	359
44201409	CLASS C PATCHES, TYPE IV, 14 INCH	SQ YD	883
44213200	SAW CUTS	FOOT	1,377
44213204	TIE BARS 3/4"	EACH	102
67100100	MOBILIZATION	L SUM	1
70100820	TRAFFIC CONTROL AND PROTECTION, STANDARD 701451	L SUM	1
70103815	TRAFFIC CONTROL SURVEILLANCE	CAL DA	28
70107025	CHANGEABLE MESSAGE SIGN	CAL DA	112
X7010520	TRAFFIC CONTROL AND PROTECTION, STANDARD 701201 (SPECIAL)	L SUM	1

MODEL: SDO (Sheet)
 FILE NAME: P:\Illinois\Draw\Bentley.com\PMIDOT\Documents\DOT_Offices\District 9\PRD Projects\78974\CD\Draws\CAD\Draws\DOT\78974-SUM-QTY.dgn

USER NAME = Dacoda.Blockley	DESIGNED -	REVISED -
	DRAWN -	REVISED -
PLOT SCALE = 0.16666633 1/16 in.	CHECKED -	REVISED -
PLOT DATE = 3/28/2023	DATE -	REVISED -

**STATE OF ILLINOIS
DEPARTMENT OF TRANSPORTATION**

SUMMARY OF QUANTITIES

SCALE: NO SCALE SHEET 4 OF 8 SHEETS STA. TO STA.

F.A.P. RTE.	SECTION	COUNTY	TOTAL SHEETS	SHEET NO.
332	D9 PATCH 2023-1	WHITE	8	4
CONTRACT NO. 78974				
ILLINOIS FED. AID PROJECT				

CLASS B & C PATCHING SCHEDULE

LOCATION	LENGTH	WIDTH	CLASS B, TY IV, 14"	CLASS C, TY II, 14"	CLASS C, TY III, 14"	CLASS C, TY IV, 14"	SAW CUTS	TIE BARS 3/4"	DOWEL BARS 1 1/2"	WELDED WIRE REINF.	COMMENTS
	FOOT	FOOT	SQYD	SQYD	SQYD	SQYD	FOOT	EACH	EACH	SQ YD	
IL 1 SB											
STA 72+01	6	13		9							
STA 72+99	10	13			15						
STA 73+98	9	16			16						
STA 74+25	9	16			16						
STA 74+90	21	16				38					
STA 75+73	33	15				55					
STA 76+49	6	15		10							
STA 76+83	9	15			15						
STA 77+09	6	15		10							
STA 78+13	6	15		10							EB ON RAMP
STA 79+72	15	15				25					
STA 80+22	14	15			24						
STA 80+51	9	17			17						
STA 80+79	7	15		12							
STA 80+96	9	15			15						
STA 81+94	27	15				45					
STA 83+17	6	15		10							
STA 83+68	6	15		10							
STA 83+96	6	15		10							
STA 84+39	6	15		10							
STA 84+94	27	15				45					
STA 86+01	6	15		10							
STA 86+96	15	15				25					
STA 87+33	7	15		12							
STA 87+93	15	15				25					
STA 88+95	27	15				45					
STA 90+00	12	15			20						
STA 90+23	39	15				65					
STA 91+72	25	15				42					
STA 94+99	6	15		10							
STA 96+35	21	15				35					
STA 97+44	15	15				23					
STA 97+83	12	15			20						
STA 98+38	21	15				35					
IL 1 NB											
STA 101+38	15	17				29					
STA 98+40	15	15				25					
STA 97+95	6	15		10							
STA 97+55	6	15		10							
STA 97+28	6	15		10							
STA 96+46	9	23			23						TURN LANE
STA 95+47	9	24			24						TURN LANE
STA 94+49	8	26			24						TURN LANE
STA 93+35	9	26				26					TURN LANE
STA 91+94	12	21				28					
STA 90+97	10	15			17						
STA 89+92	18	15				30					
STA 88+46	12	15			20						
STA 87+86	21	15				35					
STA 87+62	6	15		10							
STA 86+94	15	15				25					

MODEL: PATCHING SCHEDULE2 (Sheet)
 FILE NAME: P:\GIS\Projects\DOT\Office\District 9\980 Projects\78974\CAD\DATA\CAD\Sheets\DOT\78974\SHC-Schedule.dgn

USER NAME = Dacoda.Blockley	DESIGNED -	REVISED -
PLOT SCALE = 0.16666633 1/16"	DRAWN -	REVISED -
PLOT DATE = 3/28/2023	CHECKED -	REVISED -
	DATE -	REVISED -

**STATE OF ILLINOIS
DEPARTMENT OF TRANSPORTATION**

PATCHING SCHEDULE

SCALING SCALE SHEET 6 OF 8 SHEETS STA. TO STA.

F.A.P. RTE.	SECTION	COUNTY	TOTAL SHEETS	SHEET NO.
332	D9 PATCH 2023-1	WHITE	8	6
CONTRACT NO. 78974				
ILLINOIS FED. AID PROJECT				

CLASS B & C PATCHING SCHEDULE

LOCATION	LENGTH	WIDTH	CLASS B, TY IV, 14"	CLASS C, TY II, 14"	CLASS C, TY III, 14"	CLASS C, TY IV, 14"	SAW CUTS	TIE BARS 3/4"	DOWEL BARS 1 1/2"	WELDED WIRE REINF.	COMMENTS
	FOOT	FOOT	SQYD	SQYD	SQYD	SQYD	FOOT	EACH	EACH	SQ YD	
IL 1 NB											
STA 85+94	15	15				25					
STA 84+93	6	15		10							
STA 84+45	15	15				25					
STA 83+93	18	15				30					
STA 82+96	9	23			23						TURN LANE
STA 82+59	6	15		10							
STA 81+97	9	26				26					TURN LANE
STA 80+97	9	26				26					TURN LANE
STA 80+31	6	26			18						TURN LANE
STA 79+07	6	26			18						TURN LANE
STA 78+17	15	15				25					
STA 77+92	12	15			20						
STA 77+04	6	15		10							
STA 76+86	6	15		10							
STA 75+92	15	15				25					
STA 75+07	6	15		10							
STA 74+01	8	15			14						
I-64 WB RAMP											
RAMP A	36	30	120				162	12	56	120	
RAMP A	20	26	28				118	7	48	28	
RAMP A	30	17	27				111	10	30	27	
RAMP B	49	16	87				146	16	28	87	
RAMP B	18	16	32				84		28	32	
RAMP B	28	26	81				134	9	48	81	
I-64 EB RAMP											
RAMP C	51	17	97				153	17	30	97	
RAMP C	10	17	19				71		30	19	
RAMP D	31	18	62				116	10	32	62	
RAMP D	20	18	40				94	7	32	40	
RAMP D	20	18	40				94	7	32	40	
RAMP D	20	18	40				94	7	32	40	
TOTALS			673	213	359	883	1377	102	426	673	

MODEL: PATCHING SCHEDULE 2 (Sheet)
FILE NAME: P:\Illinois\Bentley\Projects\I-64\DOT\Office\District 9\IBRD\Projects\78974\I-64\DOT\CAD\Sheet\0978974-SN1E-Schedule.dgn

USER NAME = Dacoda.Blockley	DESIGNED -	REVISED -
	DRAWN -	REVISED -
PLOT SCALE = 0.16666633 1/16 in.	CHECKED -	REVISED -
PLOT DATE = 3/28/2023	DATE -	REVISED -

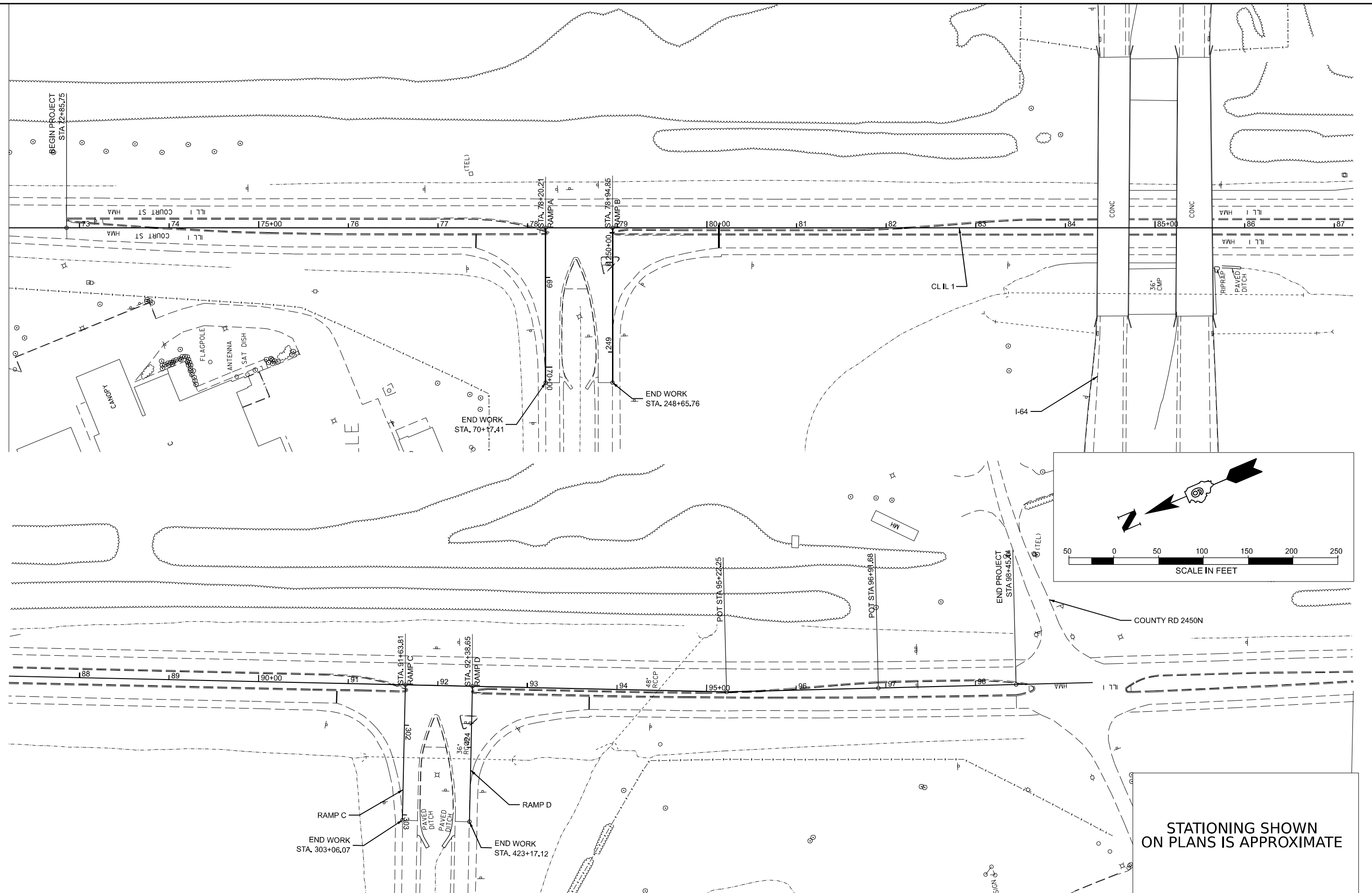
**STATE OF ILLINOIS
DEPARTMENT OF TRANSPORTATION**

PATCHING SCHEDULE

SCALE NO SCALE SHEET 7 OF 8 SHEETS STA. TO STA.

F.A.P. RTE. 332	SECTION D9 PATCH 2023-1	COUNTY WHITE	TOTAL SHEETS 8	SHEET NO. 7
CONTRACT NO. 78974			ILLINOIS FED. AID PROJECT	

MODEL: I:\F-Plan\1 (Sheet)
 FILE NAME: P:\Bids\2023\11\11\DOT\Documents\DOT Office\District 9\ORD Project\78974\CADD\Drawings\098974\Plan_Sht.dgn



USER NAME = Dacoda.Blockley	DESIGNED -	REVISED -
DRAWN -	REVISED -	REVISED -
PLOT SCALE = 0.16666633' / in.	CHECKED -	REVISED -
PLOT DATE = 3/27/2023	DATE -	REVISED -

DESIGNED -	REVISED -
DRAWN -	REVISED -
CHECKED -	REVISED -
DATE -	REVISED -

**STATE OF ILLINOIS
 DEPARTMENT OF TRANSPORTATION**

PLAN SHEET

SCALE: 1"=50' SHEET 8 OF 9 SHEETS STA. TO STA.

F.A.P. RTE.	SECTION	COUNTY	TOTAL SHEETS	SHEET NO.
332	D9 PATCH 2023-1	WHITE	9	8
CONTRACT NO. 78974				
ILLINOIS FED. AID PROJECT				