

STATE OF ILLINOIS
DEPARTMENT OF TRANSPORTATION

F.A. RTE.	SECTION	COUNTY	TOTAL SHEETS	SHEET NO.
	D1 REFLECTOR REPL 24-06	S. COOK	9	1
		ILLINOIS	CONTRACT NO. 46624	

INDEX OF SHEETS:

1. COVER SHEET
2. GENERAL NOTES
3. SUMMARY OF QUANTITIES
- 4-9. RAISED REFLECTIVE PAVEMENT MARKER REPLACEMENT LOCATIONS

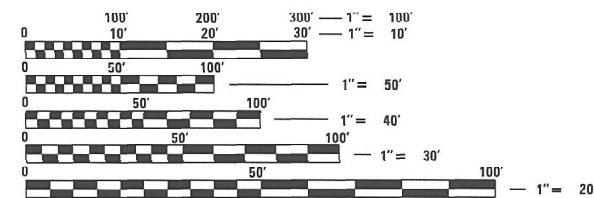
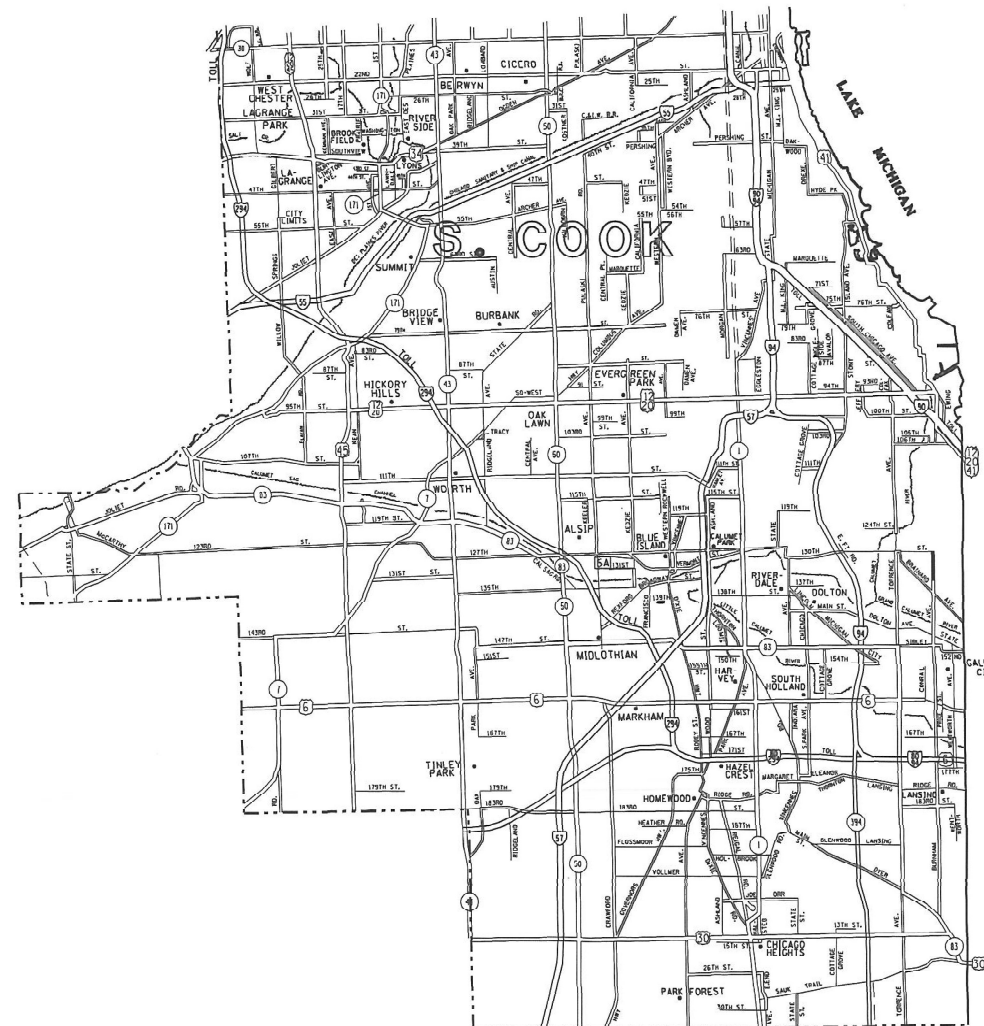
STATE STANDARDS

- 701301-04 LANE CLOSURE 2L,2W, SHORT TIME OPERATIONS
- 701311-03 LANE CLOSURE 2L,2W MOVING OPERATIONS-DAY ONLY
- 701426-09 LANE CLOSURE, MULTILANE, INTERMITTENT OR MOVING OPERATION FOR SPEEDS \geq 45MPH
- 701427-05 LANE CLOSURE, MULTILANE, INTERMITTENT OR MOVING OPERATION FOR SPEEDS \leq 40MPH
- 701901-08 TRAFFIC CONTROL DEVICES

PROPOSED HIGHWAY PLANS

VARIOUS ROUTES
D 1 REFLECTOR REPL 24-06 S COOK
RAISED REFLECTOR REPLACEMENT
S. COOK COUNTY

M-60-006-24



FULL SIZE PLANS HAVE BEEN PREPARED USING STANDARD ENGINEERING SCALES. REDUCED SIZED PLANS WILL NOT CONFORM TO STANDARD SCALES. IN MAKING MEASUREMENTS ON REDUCED PLANS, THE ABOVE SCALES MAY BE USED.

J.U.L.I.E.
JOINT UTILITY LOCATION INFORMATION FOR EXCAVATORS
1-800-892-0123
OR 811

CONTRACT NO. 46624

STATE OF ILLINOIS
DEPARTMENT OF TRANSPORTATION

SUBMITTED March 15, 2023
Jose R. [Signature]
REGIONAL ENGINEER

May 12, 2023 [Signature]
ENGINEER OF DESIGN AND ENVIRONMENT

May 12, 2023 [Signature]
DIRECTOR OF HIGHWAYS PROJECT IMPLEMENTATION

PRINTED BY THE AUTHORITY
OF THE STATE OF ILLINOIS

GENERAL NOTES

The Department may remove and not install markers in certain locations at the engineer's discretion.

The Department may install markers in certain locations that did previously have markers at the engineer's discretion.

The locations of the repair areas shall be determined by the engineer.

No material should be left on or near the roadway.

Removal of damaged materials will include loading, hauling and disposal.

MODEL: Default
 FILE NAME: S:\S\Contract\5601\CoverSheets for Contracts.dgn

	USER NAME = David.Gonzalez2	DESIGNED -	REVISED -	STATE OF ILLINOIS DEPARTMENT OF TRANSPORTATION	GENERAL NOTES	F.A. RTE.	SECTION	COUNTY	TOTAL SHEETS	SHEET NO.	
	PLOT SCALE = 102,2042' / in.	CHECKED -	REVISED -				D1 REFLECTOR REPL 24-06	S. COOK	9	2	
	PLOT DATE = 3/13/2023	DATE -	REVISED -			SCALE:	SHEET 2 OF 9 SHEETS	STA.	TO STA.	ILLINOIS FED. AID PROJECT	
										CONTRACT NO. 46624	

SUMMARY OF QUANTITIES

			100% STATE
PAY CODE	ITEM DESCRIPTION	UNIT	URBAN 021 TOTAL QUANTITY
78100100	RAISED REFLECTIVE PAVEMENT MARKERS	EACH	40186
78100300	REPLACEMENT REFLECTOR	EACH	133954
78300200	RAISED REFLECTIVE PAVEMENT MARKER REMOVAL	EACH	40186

MODEL: Default
 FILE NAME: S:\Contracts\CAD\CoverSheets for Contracts.dgn

USER NAME = David.Gonzalez2 PLOT SCALE = 101.6293 ' / in. PLOT DATE = 3/14/2023	DESIGNED - DRAWN - CHECKED - DATE -	REVISED - REVISED - REVISED - REVISED -	STATE OF ILLINOIS DEPARTMENT OF TRANSPORTATION	SUMMARY OF QUANTITIES SCALE: SHEET 3 OF 9 SHEETS STA. TO STA.	F.A. RTE. SECTION COUNTY ILLINOIS FED. AID PROJECT	TOTAL SHEETS COUNTY CONTRACT NO. 46624	SHEET NO. 9 3
---	--	--	---	---	---	--	---------------------

District 1 Raised Reflective Pavement Markers Replacement List

Route	From (West/South Limit)	To (East/North Limit)	Total	Y/Y	Y/O	W/O
Il 7	Il 6	s/o Royal Oak Ln	478	154	243	81
Il 83	Il 171	127th St.	3407	1226	746	1435
US 12/20	Ridgeland Ave	Western Ave	3803	816	331	2656
Sibley Rd (152nd St)	Il 83	Burnham	678	222	200	256
26th St	E. End	Western Ave	790	529	115	146
26th St	Desplaines Ave	Home St	503	212	46	245
26th St	E. End Ave	State St	183	162	15	6
47th St	DuPage/Cook Line	IL-43	2846	1102	146	1598
55th St	Il 171	IL-43	222	66	32	124
55th St	Joilet Rd	DuPage/Cook Line	1967	729	191	1047
107th St	IL 83/171	Kean Ave	737	505	127	105
111th St	US 45	Pulaski	3800	965	806	2029
115th St	E/O IL 50	Rockwell	511	366	60	85
115th St	IL 50	E/o IL 50	51	0	0	51
123rd St	IL 171	127th	1697	1167	398	132
127th St	Kedzie	E/O IL 43	1799	537	239	1023
127th St	Kedzie	Bishop St	1017	335	88	594
127th St	123rd St	e/o Il 43	521	201	14	306
127th St	Bishop St	IL 1	400	198	0	202
143rd St	Will/Cook	US 45	1227	252	422	553
143rd St	IL 43	Park	586	70	194	322

MODEL: Default; FILE NAME: S:\ISS\Contracts\CAD\CoverSheets for Contracts.dgn

USER NAME = David.Gonzalez2	DESIGNED -	REVISED -
	DRAWN -	REVISED -
PLOT SCALE = 101.8604' / in.	CHECKED -	REVISED -
PLOT DATE = 3/14/2023	DATE -	REVISED -

**STATE OF ILLINOIS
DEPARTMENT OF TRANSPORTATION**

RAISED REFLECTIVE PAVEMENT MARKER REPLACEMENT LOCATIONS

SCALE: SHEET 4 OF 9 SHEETS STA. TO STA.

F.A. RTE.	SECTION	COUNTY	TOTAL SHEETS	SHEET NO.
	D1 REFLECTOR REPL 24-06	S. COOK	9	4
CONTRACT NO. 46624				
ILLINOIS FED. AID PROJECT				

Route	From (West/South Limit)	To (East/North Limit)	Total	Y/Y	Y/O	W/O
154th St	I-94	Michigan City Rd	101	77	19	5
175th St	Governors Hwy	Dixie Hwy	356	145	13	198
Ashland	Thornton	119th/One Way	960	398	122	440
Broadway St	Francisco St	Ashland	468	322	4	142
Burlington Ave	US 12/20/45	US 34	41	36	2	3
Burnham	186th St	s/o 142nd St	2594	1103	84	1407
Burnham	s/o 142nd St	n/o Brainard	210	78	8	124
Central Ave	51st St	47th St	307	93	46	168
Columbus Dr	87th St	91st St	358	144	33	181
Cottage Grove	Il 83	154th St	243	116	14	113
Crawford	175th St	US 6	1237	247	380	610
Dixie Hwy	Il 83	Maple	2018	820	114	1084
Dixie Hwy	Ashland Ave	Il 1	653	276	13	364
E. End	Sauk Trail	26th St	586	200	200	186
East Ave	47th St	Joliet Rd	815	342	42	431
Governors Hwy	IL 50	Super Mall S/O Sauk Trail	1498	689	14	795
Indiana Ave	164th St	US 6	470	216	44	210
Indiana Ave	Il 83	138th St	715	362	42	311
Joe Orr Rd	Ashland Ave	State St	1115	260	302	553
Joliet Rd	45th St	55th St	907	299	116	492
Joliet Rd	East Ave	I-55	1400	437	154	809
Kean Ave	119th St	Il 83	131	131	0	0
Kedzie Ave	115th St	127th St	796	357	28	411

MODEL: Default
 FILE NAME: S:\S\Contract\CA02\CoverSheets for Contracts.dgn

USER NAME = David.Gonzalez22	DESIGNED -	REVISED -	STATE OF ILLINOIS DEPARTMENT OF TRANSPORTATION	RAISED REFLECTIVE PAVEMENT MARKER REPLACEMENT LOCATIONS		F.A. RTE.	SECTION	COUNTY	TOTAL SHEETS	SHEET NO.	
PLOT SCALE = 102,3855' / in.	DRAWN -	REVISED -				D1 REFLECTOR REPL 24-06	S. COOK	9	5		
PLOT DATE = 3/14/2023	CHECKED -	REVISED -		SCALE:	SHEET 5 OF 9 SHEETS	STA.	TO STA.	CONTRACT NO. 46624			
	DATE -	REVISED -		ILLINOIS FED. AID PROJECT							

Route	From (West/South Limit)	To (East/North Limit)	Total	Y/Y	Y/O	W/O
Kedzie Ave	87th St	103rd St	1049	429	54	566
Lansing/Margeret	Torrence	Ridge Rd	659	487	70	102
Loomis Rd	150th St	Thomton	124	124	0	0
Main St (Chicago-Joliet)	McCarthy Rd	IL 83/171	600	502	82	16
McCarthy	Main St	Il 171	534	389	75	70
Michigan City	154th St	138th St	880	651	34	195
Oak Park Ave	183th St	Il 43	635	159	215	261
Park Ave/Morgan St.	Il 1	159th St	458	294	8	156
Park Ave	159th St	171st St	816	400	10	406
Pulaski	127th St	87thSt	2504	710	368	1426
Reigal Rd/Chicago Rd	Ridge Rd	Cook/Will County line	2333	1093	166	1074
Ridge Rd	State Line	Burnham	298	172	16	110
Ridge Rd	Margaret	Reigal Rd	648	445	34	169
Ridge Rd	Reigal Rd	Dixie Hwy	134	112	12	10
Ridgeland Ave	US 34	26nd St	100	100	0	0
River Oaks Dr	Burnham Ave	State Line	437	165	44	228
S. Park Ave./Chicago Rd.	Lincoln Ave.	Eleanor St./William St.	1725	1039	27	659
State Rd	Il 50	79th St	506	237	0	269
State St	127th St	Il 171	530	290	100	140
Thomton Rd	Ashland Ave	IL 83	194	142	34	18
Torrence Rd	139th St	IL 83	699	301	42	356
Vermont/Wireton	127th St	Gregory St	460	300	30	130
Vermont/Wireton	Gregory St	Morgan St	584	353	29	202

MODEL: default
FILE NAME: S:\S\Contract\CAD\CoverSheets for Contracts.dgn

USER NAME = David.Gonzalez2	DESIGNED -	REVISED -
	DRAWN -	REVISED -
PLOT SCALE = 102.3855' / in.	CHECKED -	REVISED -
PLOT DATE = 3/14/2023	DATE -	REVISED -

**STATE OF ILLINOIS
DEPARTMENT OF TRANSPORTATION**

RAISED REFLECTIVE PAVEMENT MARKER REPLACEMENT LOCATIONS

SCALE: SHEET 6 OF 9 SHEETS STA. TO STA.

F.A. RTE.	SECTION	COUNTY	TOTAL SHEETS	SHEET NO.
	D1 REFLECTOR REPL 24-06	S. COOK	9	6
CONTRACT NO. 46624				
ILLINOIS FED. AID PROJECT				

Route	From (West/South Limit)	To (East/North Limit)	Total	Y/Y	Y/O	W/O
II 83	II 50	US 30	7697	2644	783	4270
II 83/171	Main St	Grant St	354	104	21	229
US 6	Will/Cook Co Line	II 83	8609	1781	1878	4950
US 30	II 1	II 43	4449	233	860	3356
US 45	n/o 143rd St	Will/Cook Co Line	3008	0	0	3008
Dixie Hwy	183rd St	Ashland Ave	1121	513	29	579
Wentworth	167th St	177th St	443	168	45	230
Wood St	171st St	Thomton	2350	1100	150	1100
II 43	I-55	22nd St	1611	568	69	974
II 50	II 38	Ogden	755	305	20	430
II 50	Ogden	n/o I-55	1301	234	191	876
II 7	Will-Cook Rd	II 6	216	100	78	38
II 50	Flossmoor	Governors Hwy	2069	12	24	2033
IL 50	67th St	N/O I-55	2285	288	145	1852
II 171	135th St	II 83/171	1479	894	409	176
US 34	e/o II 50	California St	1535	495	50	990
New Ave	Lemont St bridge	Will/Cook Co. Line	570	500	50	20
II 1	s/o US 30	Will/Cook Co. Line	1316	574	64	678
IL 1	Forestview Ave	I-57	165	65	0	100
II 43	US 6	57th St	6093	609	422	5062
II 43	US 30	US 6	2511	47	240	2224
II 43	57th St	I-55	550	85	65	400
II 50	71st St	US 12/20	2995	600	304	2091

MODEL: Default
FILE NAME: S:\S\Contracts\CAD\CoverSheets for Contracts.dgn

USER NAME = David.Gonzalez2	DESIGNED -	REVISED -	STATE OF ILLINOIS DEPARTMENT OF TRANSPORTATION	RAISED REFLECTIVE PAVEMENT MARKER REPLACEMENT LOCATIONS		F.A. RTE.	SECTION	COUNTY	TOTAL SHEETS	SHEET NO.
DRAWN -	REVISED -					D1 REFLECTOR REPL 24-06	S. COOK	9	8	
PLOT SCALE = 102.3855' / in.	CHECKED -	REVISED -		SCALE:	SHEET 8 OF 9 SHEETS	STA.	TO STA.	CONTRACT NO. 46624		
PLOT DATE = 3/14/2023	DATE -	REVISED -		ILLINOIS FED. AID PROJECT						

Route	From (West/South Limit)	To (East/North Limit)	Total	Y/Y	Y/O	W/O
Il 50	115th St	Il 50/83(n. intersection)	1006	147	94	765
Il 50	67th St	71st St	188	0	0	188
186th St	Torrence Ave	Wentworth Ave	134	130	0	4
Joliet Rd	55th St	IL 43	1487	579	116	792
IL 1	144th St	147th St	316	132	0	184
SUBTOTALS:			133954	45796	16021	72137
GRAND TOTALS:			133954	EACH		

MODEL: Default
 FILE NAME: S:\S\Contracts\CAD\CoverSheets for Contracts.dgn

USER NAME = David.Gonzalez	DESIGNED -	REVISED -	STATE OF ILLINOIS DEPARTMENT OF TRANSPORTATION	RAISED REFLECTIVE PAVEMENT MARKER REPLACEMENT LOCATIONS	F.A. RTE.	SECTION	COUNTY	TOTAL SHEETS	SHEET NO.
PLOT SCALE = 102.3855' / in.	DRAWN -	REVISED -			D1 REFLECTOR REPL 24-06	S. COOK	9	9	
PLOT DATE = 3/14/2023	CHECKED -	REVISED -			CONTRACT NO. 46624				
DATE -	REVISED -	ILLINOIS FED. AID PROJECT							
SCALE: SHEET 9 OF 9 SHEETS STA. TO STA.									