

06-16-2023 LETTING ITEM 166

STATE OF ILLINOIS  
DEPARTMENT OF TRANSPORTATION  
DIVISION OF HIGHWAYS

PROPOSED  
HIGHWAY PLANS

FAI 55, 72 (I-55, I-72)  
SECTION D-6 SIGN REPLACEMENT MAINT 24-10  
VARIOUS COUNTIES

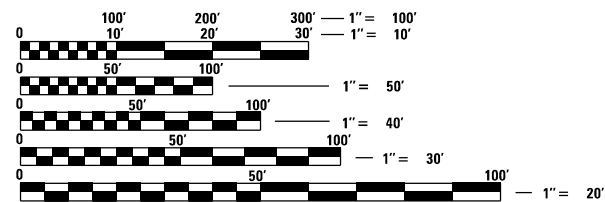
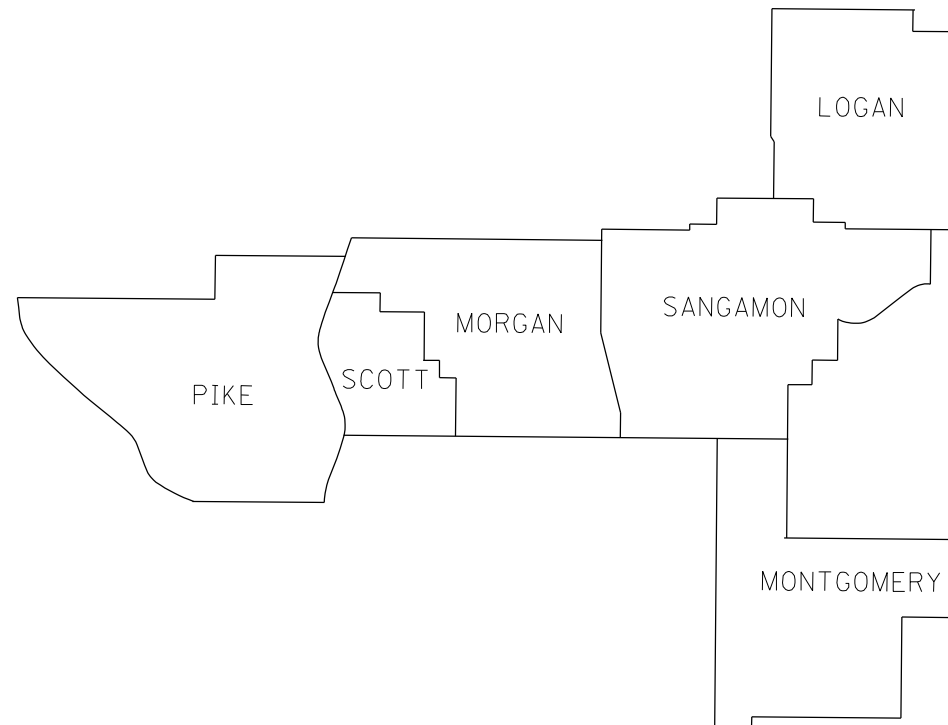
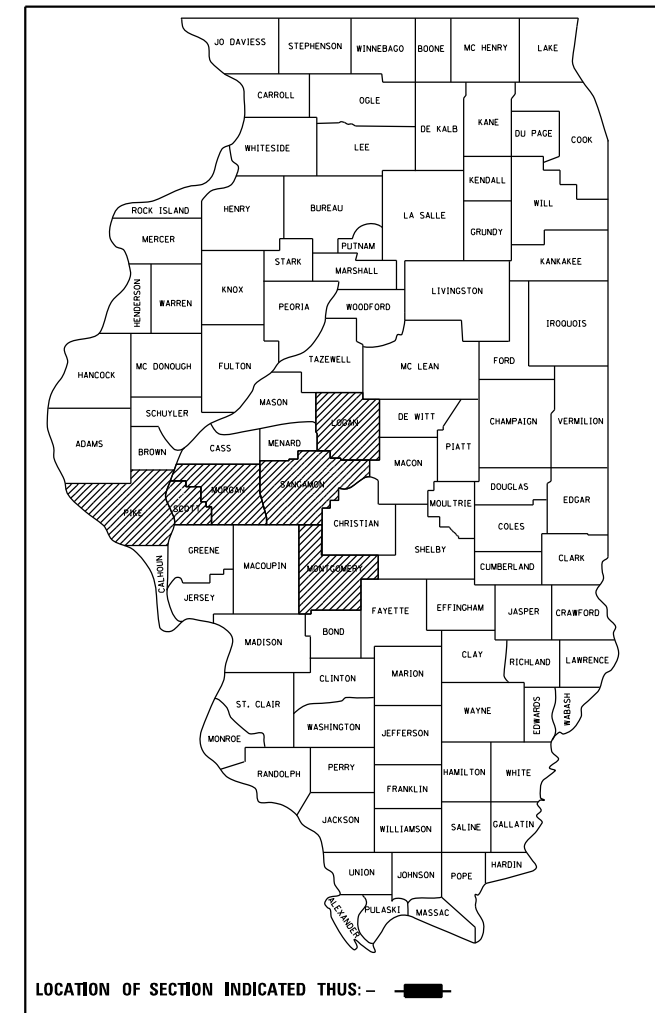
M-60-010-24

FOR INDEX OF SHEETS, SEE SHEET NO. 2

RTE.	SECTION	COUNTY	TOTAL SHEETS	SHEET NO.
VAR.		VARIOUS	3	1
		ILLINOIS	CONTRACT NO. 46628	

D-6 SIGN REPLACEMENT MAINTENANCE 24-10

D-XX-XXX-XX



FULL SIZE PLANS HAVE BEEN PREPARED USING STANDARD ENGINEERING SCALES. REDUCED SIZED PLANS WILL NOT CONFORM TO STANDARD SCALES. IN MAKING MEASUREMENTS ON REDUCED PLANS, THE ABOVE SCALES MAY BE USED.

J.U.L.I.E.  
JOINT UTILITY LOCATION INFORMATION FOR EXCAVATION  
1-800-892-0123  
OR 811

PROJECT ENGINEER: JASON JONES (217) 785-5306  
PROJECT MANAGER: ERIC RENT (217) 785-0289

CONTRACT NO. 46628

STATE OF ILLINOIS  
DEPARTMENT OF TRANSPORTATION  
DIVISION OF HIGHWAYS

SUBMITTED April 4 2023

*John P. Meyer*  
REGION FOUR ENGINEER

May 12, 2023 *Scott A. Etkin*  
ENGINEER OF DESIGN AND ENVIRONMENT

May 12, 2023 *Stephen M. Smith*  
DIRECTOR OF HIGHWAYS PROJECT IMPLEMENTATION

PRINTED BY THE AUTHORITY  
OF THE STATE OF ILLINOIS

INDEX OF SHEETS

- 1 COVER SHEET
- 2 INDEX OF SHEETS, STANDARDS, & SIGNATURES
- 3 SUMMARY OF QUANTITIES

STANDARDS

- 000001-08 STANDARD SYMBOLS, ABBREVIATIONS AND PATTERNS
- 001006 DECIMAL OF AN INCH AND OF A FOOT
- 701101-05 OFF-RD OPERATIONS, MULTILANE, 15' TO 24' FROM PAVEMENT EDGE
- 701106-02 OFF-RD OPERATIONS, MULTILANE, MORE THAN 15' AWAY
- 701400-11 APPROACH TO LANE CLOSURE, FREEWAY/EXPRESSWAY
- 701401-13 LANE CLOSURE, FREEWAY/EXPRESSWAY
- 701406-13 LANE CLOSURE, FREEWAY/EXPRESSWAY, DAY OPERATIONS ONLY
- 701411-09 LANE CLOSURE, MULTILANE, AT ENTRANCE OR EXIT RAMP, FOR SPEEDS 45 MPH OR MORE
- 701428-01 TRAFFIC CONTROL SETUP AND REMOVAL FREEWAY/EXPRESSWAY
- 701456-05 PARTIAL EXIT RAMP CLOSURE FREEWAY/EXPRESSWAY
- 701901-08 TRAFFIC CONTROL DEVICES

REV. - MS

\*D-6 SIGN REPLACEMENT MAINTENANCE 24-10

FILE NAME =	USER NAME = Eric.Rent	DESIGNED -	REVISED -	<b>STATE OF ILLINOIS DEPARTMENT OF TRANSPORTATION</b>	<b>GENERAL NOTES</b>	RTE.	SECTION	COUNTY	TOTAL SHEETS	SHEET NO.
S:\CONTRMAINT_CAD\46628 D6 Sign Replacement Maint 24-10\PLANS\sheet 2-GenNotes.dgn	DRAWN -	REVISED -	VAR.			*	VARIOUS	3	2	
Default	PLOT SCALE = 2.0000' / 1" =	CHECKED -	REVISED -			CONTRACT NO. 46628				
	PLOT DATE = 4/3/2023	DATE -	REVISED -			SCALE:	SHEET OF SHEETS	STA. TO STA.	ILLINOIS FED. AID PROJECT	

CODE NO.	ITEM	UNIT	TOTAL QUANTITY	100% STATE	100% STATE	100% STATE	100% STATE	100% STATE	100% STATE
				LOGAN	MONTGOMERY	MORGAN	PIKE	SANGAMON	SCOTT
				0044	0044	0044	0044	0044	0044
72100100	SIGN PANEL OVERLAY	SQ FT	24,972	1,674	600	5,822	6,380	8,010	2,486

REV. - MS

•D-6 SIGN REPLACEMENT MAINTENANCE 24-10

FILE NAME =	USER NAME = Eric.Rent	DESIGNED -	REVISED -	<b>STATE OF ILLINOIS DEPARTMENT OF TRANSPORTATION</b>	<b>SUMMARY OF QUANTITIES</b>				RTE.	SECTION	COUNTY	TOTAL SHEETS	SHEET NO.
S:\CONTRMAINT_CAD\46628 D6 Sign Replacement Maint 24-10\PLANS\sheet 3-500....dgn	DRAWN -	REVISED -	VAR.						*	VARIOUS	3	3	
Default	PLOT SCALE = 2.0000' / in.	CHECKED -	REVISED -		SCALE: SHEET OF SHEETS STA. TO STA.				CONTRACT NO. 46628				
	PLOT DATE = 4/3/2023	DATE -	REVISED -						ILLINOIS FED. AID PROJECT				