

STATE OF ILLINOIS
DEPARTMENT OF TRANSPORTATION

F.A.U. RTE.	SECTION	COUNTY	TOTAL SHEETS	SHEET NO.
6104	23-00084-01-RS	LASALLE	7	1
		ILLINOIS	CONTRACT NO. 87836	

INDEX OF SHEETS

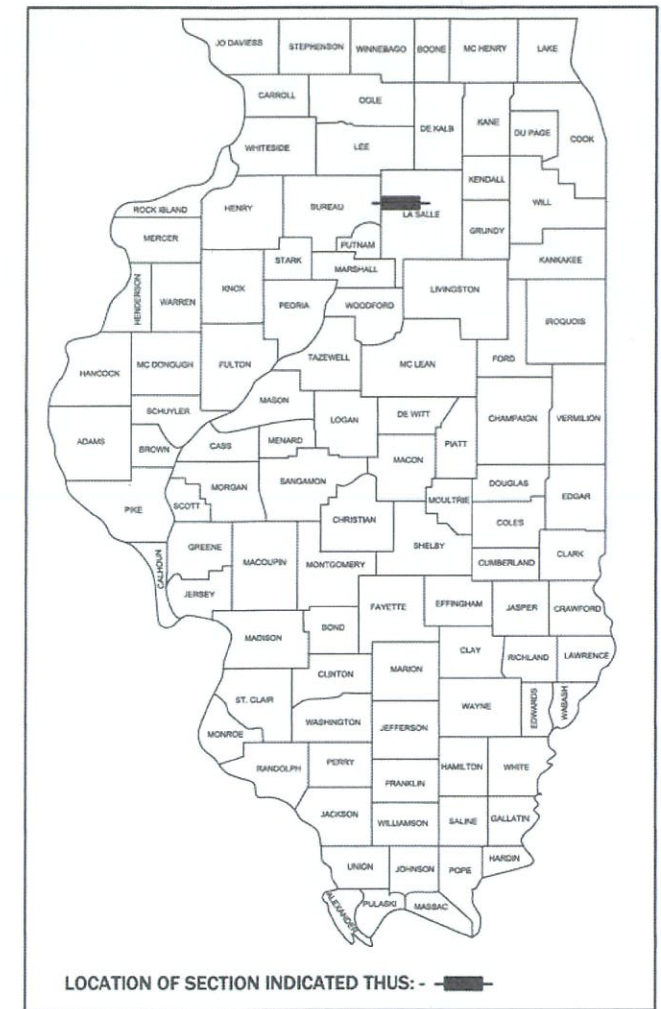
1. COVER SHEET
2. GENERAL NOTES & SUMMARY OF QUANTITIES
3. TYPICAL SECTIONS
4. - 7. PLAN SHEETS

HIGHWAY STANDARDS

000001-08	STANDARD SYMBOLS, ABBREVIATIONS AND PATTERNS
280001-07	TEMPORARY EROSION CONTROL SYSTEMS
606001-08	CONCRETE CURB TYPE B AND COMBINATION CONCRETE CURB AND GUTTER
701001-02	OFF-ROAD OPERATIONS, 2L, 2W, MORE THAN 15' AWAY
701006-05	OFF-ROAD OPERATIONS, 2L, 2W, 15' TO 24" FROM PAVEMENT EDGE
701301-04	LANE CLOSURE, 2L, 2W, SHORT TIME OPERATIONS
701311-03	LANE CLOSURE 2L, 2W MOVING OPERATIONS - DAY ONLY
701501-06	URBAN LANE CLOSURE, 2L, 2W, UNDIVIDED
701901-08	TRAFFIC CONTROL DEVICES
780001-05	TYPICAL PAVEMENT MARKINGS

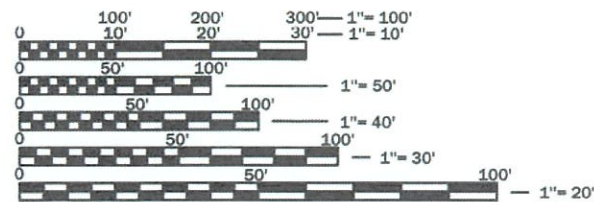
PROPOSED PLANS FOR
FEDERAL AID HIGHWAY

CITY OF LA SALLE
FAU 6104 (CHARTRES STREET)
SECTION 23-00084-01-RS
PROJECT BGU2(381)
LASALLE COUNTY
C-93-024-24



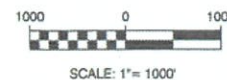
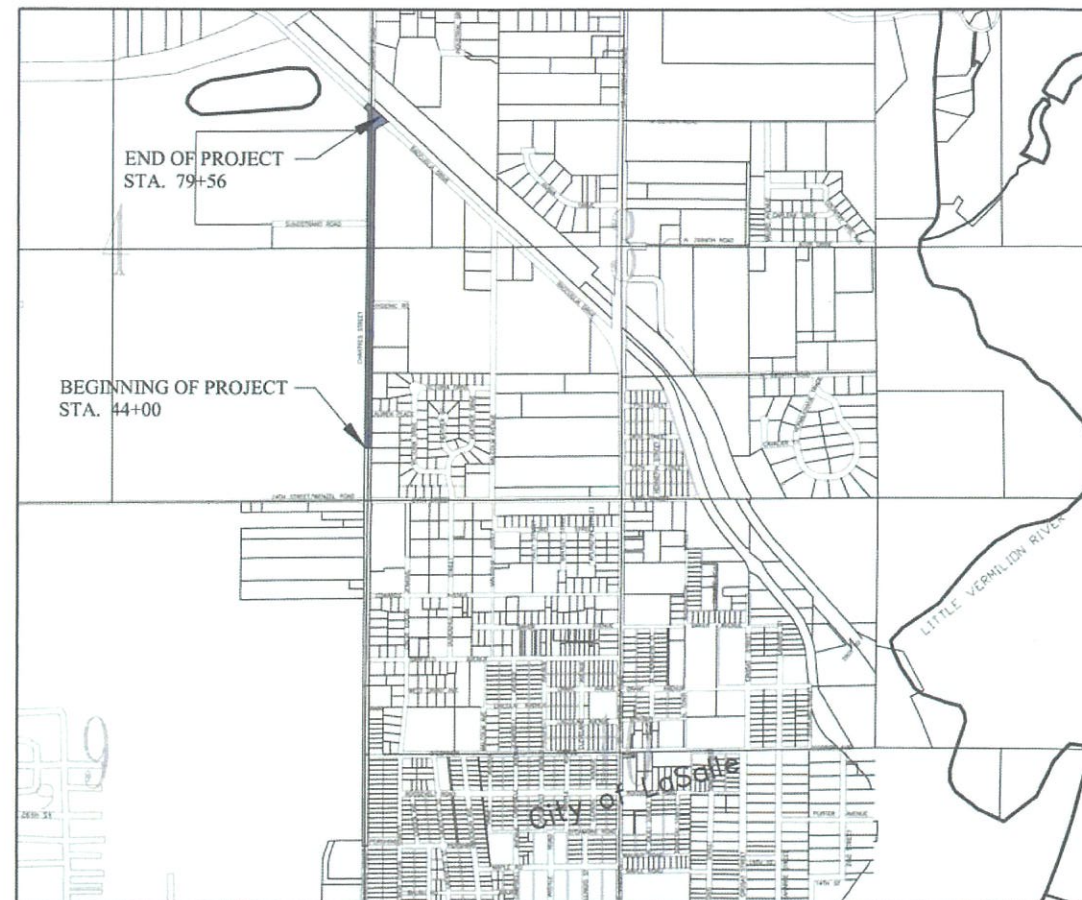
LOCATION OF SECTION INDICATED THIS: - [Black Box] -

FAU 6104 (CHARTRES STREET)
FUNCTIONAL CLASSIFICATION: MINOR ARTERIAL
ADT = 2850 (2020)
POSTED SPEED = 30 MPH



FULL SIZE PLANS HAVE BEEN PREPARED USING STANDARD ENGINEERING SCALES. REDUCED SIZED PLANS WILL NOT CONFORM TO STANDARD SCALES. IN MAKING MEASUREMENTS ON REDUCED PLANS, THE ABOVE SCALES MAY BE USED.

J.U.L.I.E.
JOINT UTILITY LOCATION INFORMATION FOR EXCAVATION
1-800-892-0123
OR 811



SCALE: 1" = 1000'
GROSS LENGTH = 3,556 FT. = 0.673 MILES
NET LENGTH = 3,556 FT. = 0.673 MILES

PREPARED BY OR UNDER THE DIRECT SUPERVISION OF:

[Signature]
DATED THIS 10TH DAY OF FEBRUARY, 2023



DISTRICT 3 NO. (815) 434-6131
CONTRACT NO. 87836

STATE OF ILLINOIS
DEPARTMENT OF TRANSPORTATION

SUBMITTED 2-10 20 23

[Signature]
JEFF GROVE, MAYOR - CITY OF LA SALLE

PASSED February 24 20 23

[Signature]
DISTRICT 3, LOCAL ROADS AND STREET ENGINEER

RELEASED FOR February 24 20 23
BID BASED ON LIMITED REVIEW

[Signature]
REGION 2 ENGINEER

PRINTED BY THE AUTHORITY
OF THE STATE OF ILLINOIS

GENERAL NOTES

THE THICKNESS OF THE HOT-MIX ASPHALT SHOWN ON THE PLANS IS A NOMINAL THICKNESS. DEVIATIONS FROM NOMINAL THICKNESS WILL BE PERMITTED WHEN SUCH DEVIATIONS OCCUR DUE TO REGULARITIES IN THE EXISTING SURFACE OR BASE ON WHICH THE HOT-MIX ASPHALT IS PLACED.

THE ENGINEER WILL BE THE SOLE JUDGE CONCERNING CURING TIME FOR VARIOUS HOT-MIX ASPHALT LIFTS.

FOR STABILIZATION, ALL TYPE III BARRICADES WILL REQUIRE A MINIMUM OF FOUR (4) SAND BAGS PER BARRICADE.

CONTRACTOR SHALL NOTIFY J.U.L.I.E. AT LEAST 48 HOURS PRIOR TO EXCAVATION.

CONTRACTOR SHALL INSTALL "ROAD CONSTRUCTION AHEAD" SIGNS ON ALL CROSS ROADWAYS, PLACED EAST AND WEST OF CHARTRES STREET. SIGNS TO BE 48" X 48" WITH A BLACK DIRECTIONAL ARROW ON FLUORESCENT ORANGE BACKGROUND.

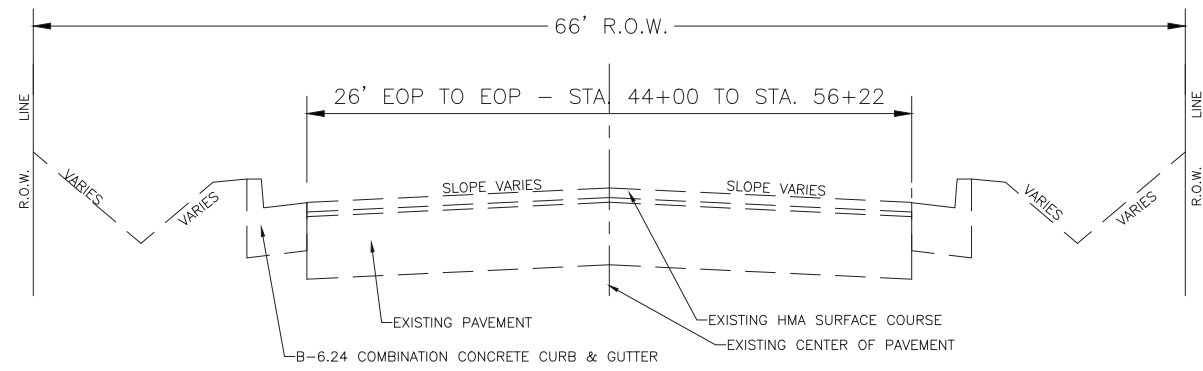
THE FOLLOWING RATES OF APPLICATION HAVE BEEN USED IN CALCULATING PLAN QUANTITIES:

BITUMINOUS MATERIAL (TACK COAT)	
SURFACE TYPE	RESIDUAL RATE
AGGREGATE BASES	N/A
CONCRETE, EXISTING HMA, AND MILLED HMA PAVEMENT	0.05 LBS/SQ FT
NEW HMA AND BRICK	0.025 LBS/SQ FT

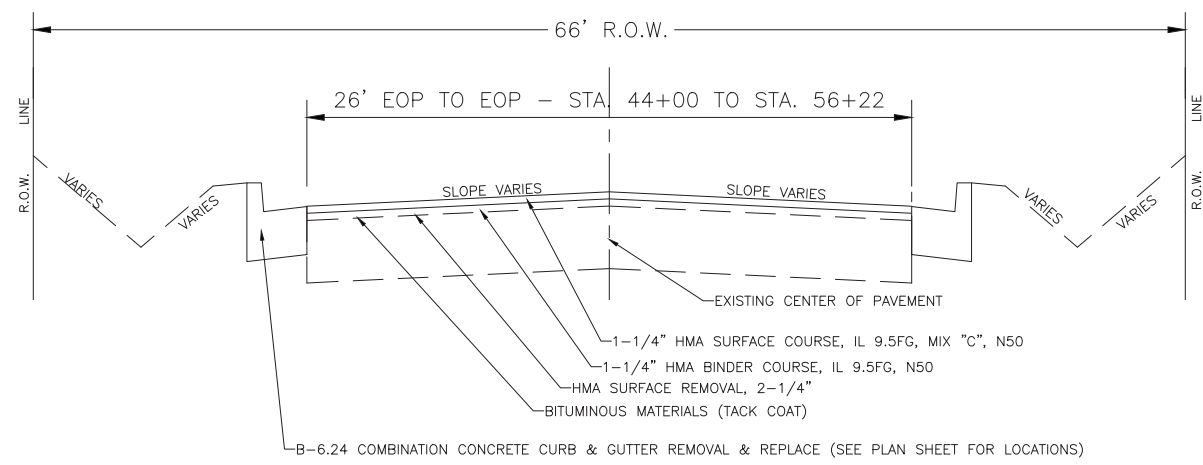
ESTIMATED TRUCK APPLICATION RATE USED FOR CALCULATING PLAN QUANTITIES

**CONSTRUCTION TYPE CODE 005
SUMMARY OF QUANTITIES**

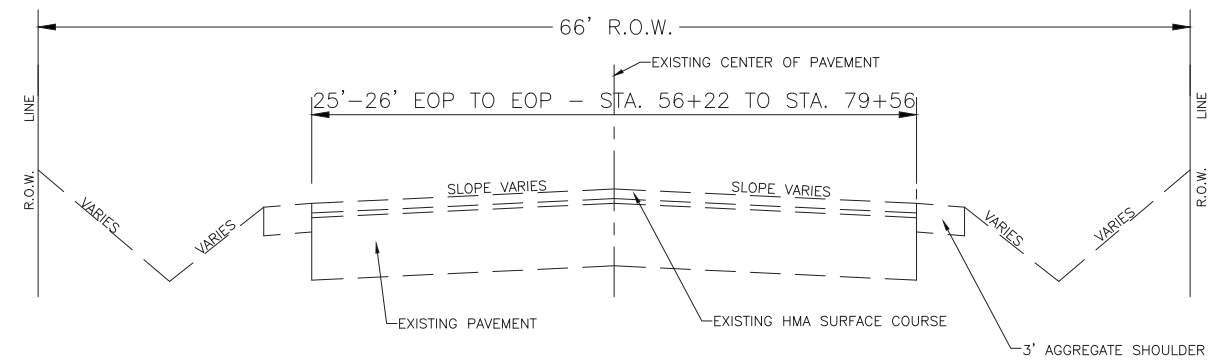
ITEM CODE	ITEM DESCRIPTION	QUANTITY	UNIT
40600290	BITUMINOUS MATERIALS (TACK COAT)	8497	LBS
40602965	HOT-MIX ASPHALT BINDER COURSE, IL 9.5FG, N50	881	TON
40604000	HOT-MIX ASPHALT SURFACE COURSE, IL 9.5FG, MIX "C", N50	881	TON
Δ 44000158	HOT-MIX ASPHALT SURFACE REMOVAL, 2-1/4"	14218	SY
Δ 44000500	COMBINATION CURB AND GUTTER REMOVAL	349	FT
44201747	CLASS D PATCHES, TYPE IV, 8"	45	SY
48101200	AGGREGATE SHOULDERS, TYPE B	209	TON
Δ 60260100	INLETS TO BE ADJUSTED	5	EACH
60605000	COMBINATION CONCRETE CURB AND GUTTER, TY B-6.24	349	FT
67100100	MOBILIZATION	1	L.S.
70102620	TRAFFIC CONTROL AND PROTECTION 701501	1	L.S.
* 78000100	THERMOPLASTIC PAVEMENT MARKING - LETTERS AND SYMBOLS	47	SF
* 78000200	THERMOPLASTIC PAVEMENT MARKING - LINE 4"	5657	FT
* 78000500	THERMOPLASTIC PAVEMENT MARKING - LINE 8"	317	FT
* 78000600	THERMOPLASTIC PAVEMENT MARKING - LINE 12"	240	FT
* 78000650	THERMOPLASTIC PAVEMENT MARKING - LINE 24"	130	FT
* 78005180	EPOXY PAVEMENT MARKING - LINE 24"	54	FT
* SPECIALTY ITEM			
Δ SPECIAL PROVISION			



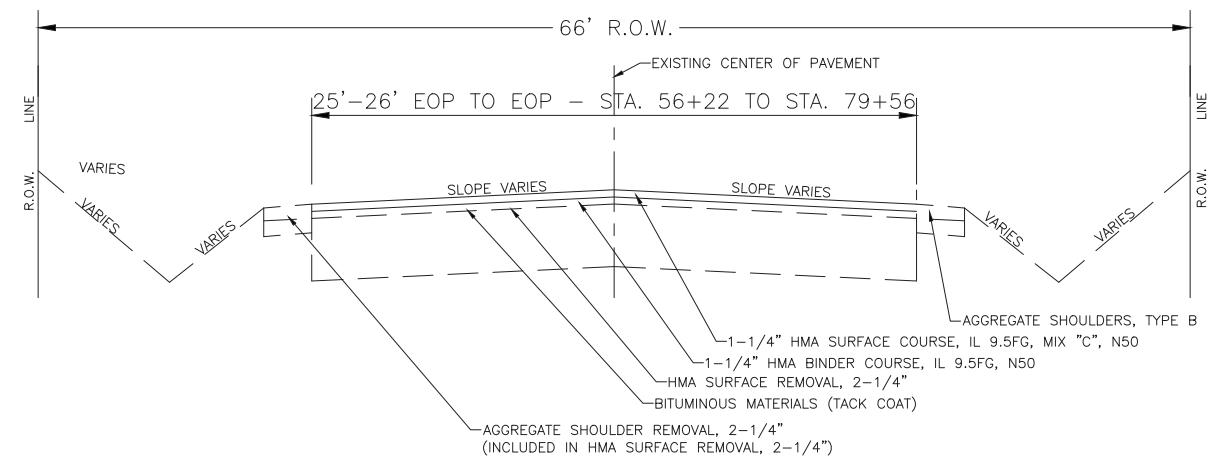
EXISTING TYPICAL SECTION
44+00 to 56+22
CHARTRES STREET
 N.T.S.



PROPOSED TYPICAL SECTION
44+00 to 56+22
CHARTRES STREET
 N.T.S.



EXISTING TYPICAL SECTION
56+22 to 79+56
CHARTRES STREET
 N.T.S.



PROPOSED TYPICAL SECTION
56+22 to 79+56
CHARTRES STREET
 N.T.S.

HMA MIXTURE REQUIREMENT TABLES			
LOCATION(S):	ENTIRE PROJECT	ENTIRE PROJECT	ENTIRE PROJECT
MIXTURE USE(S):	HMA BINDER	HMA SURFACE	CLASS D PATCHING
BINDER GRADE (PG):	PG 64-22	PG 64-22	PG 64-22
DESIGN AIR VOIDS:	4.0% @ N50	4.0% @ N50	4.0% @ N50
MIXTURE COMPOSITION (MIXTURE GRADATION):	IL 9.5FG	IL 9.5FG	IL 19.0
FRICTION AGGREGATE:		MIXTURE C	
MIXTURE WEIGHT:	112.0 LB/IN/SY	112.0 LB/IN/SY	112.0 LB/IN/SY
QUALITY MANAGEMENT PROGRAM:	QCQA	QCQA	QCQA
SUBLOT SIZE:	N/A	N/A	N/A
DENSITY TESTING METHOD:	NUCLEAR	NUCLEAR	SATISFACTION OF ENGINEER
MATERIAL TRANSFER DEVICE (REQUIRED)	NO	NO	NO

87836 - CHARTRES STREET IN LA SALLE

DRAWN BY: BDB/JS	CAD:	REVISIONS
CHECKED BY: BRIAN BROWN	DATE:	DATE BY



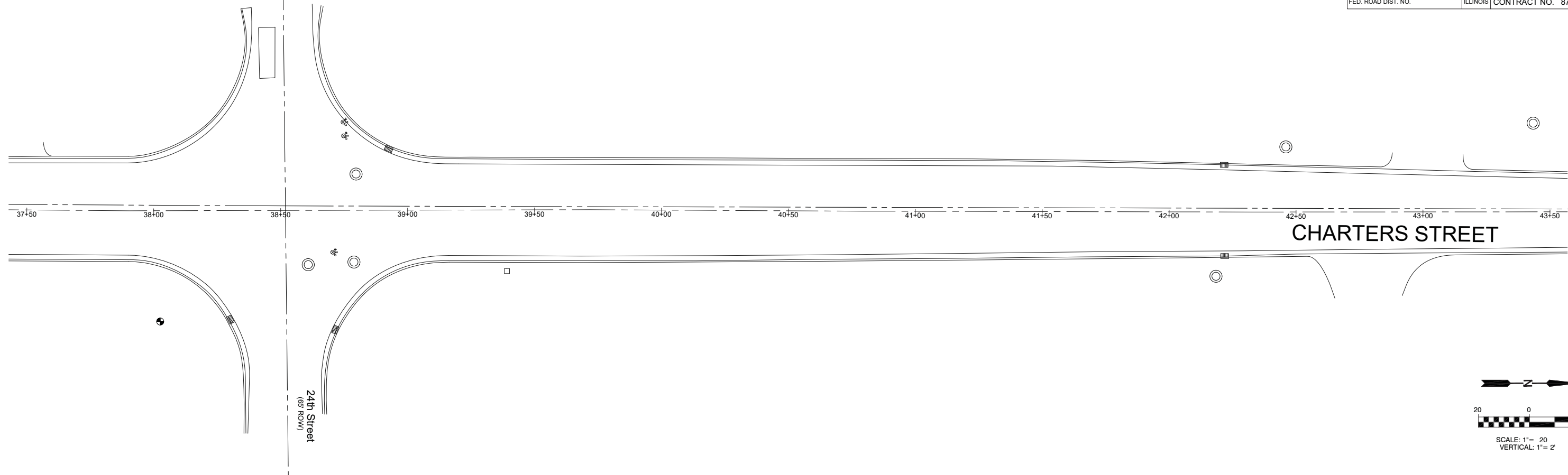
THE CITY OF
LaSalle
 ILLINOIS

FAU 6104 (CHARTRES STREET)
 SECTION 23-00084-01-RS
 CITY OF LA SALLE, LA SALLE COUNTY

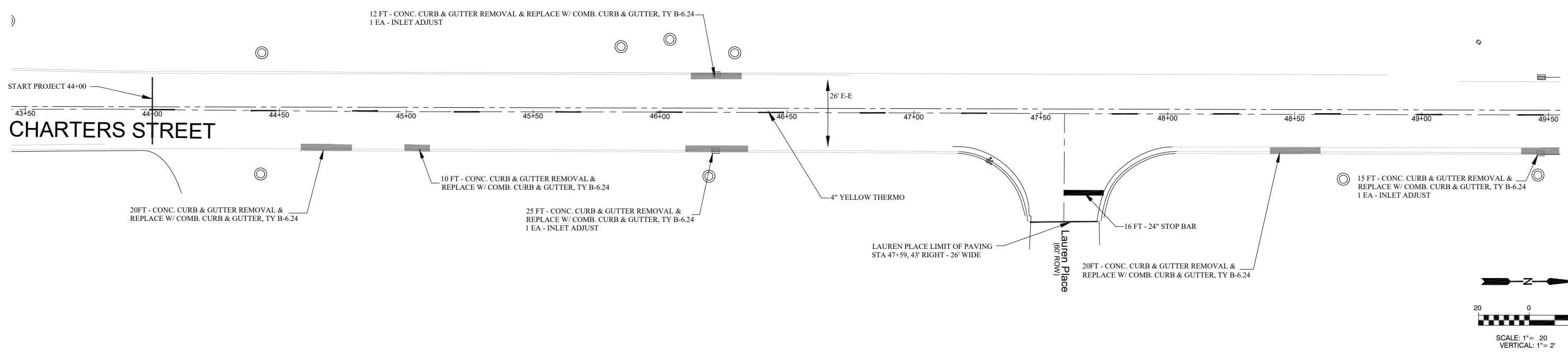
TYPICAL SECTIONS

SCALE: N/A	SHEET 3
FILE NO.:	OF 7

FAU. RTE.	SECTION	COUNTY	TOTAL SHEETS	SHEET NO.
6104	23-00084-01-RS	LASALLE	7	4
FED. ROAD DIST. NO.	ILLINOIS	CONTRACT NO. 87836		



**DOUBLE PLAN SHEETS
CHARTRES STREET
STA. 37+50 TO STA. 43+50**



DRAWN BY: CJG	CAD:
CHECKED BY:	DATE:

REVISIONS	
DATE	BY

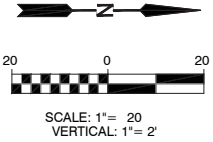
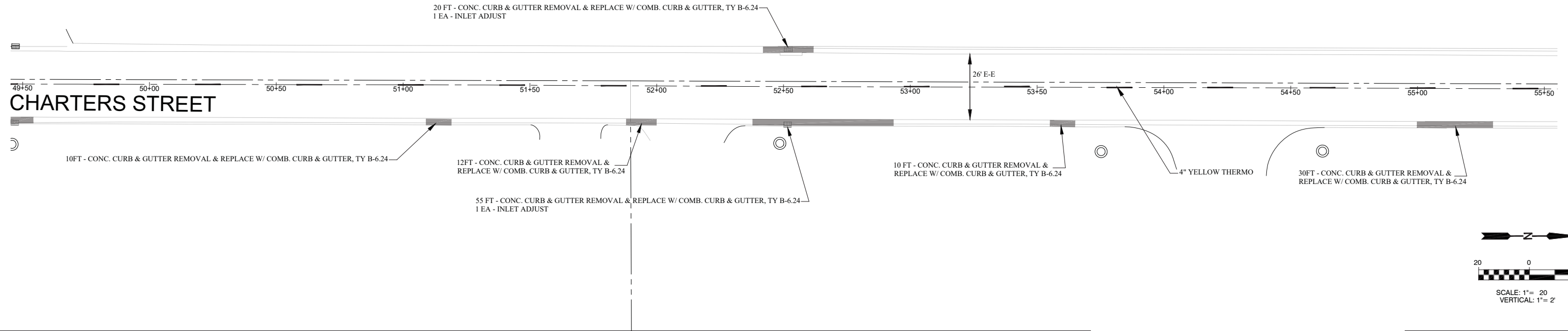


**FAU 6104 (CHARTRES STREET)
SECTION 23-00084-01-RS
CITY OF LA SALLE, LA SALLE COUNTY**

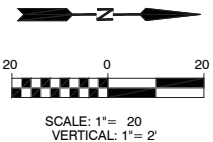
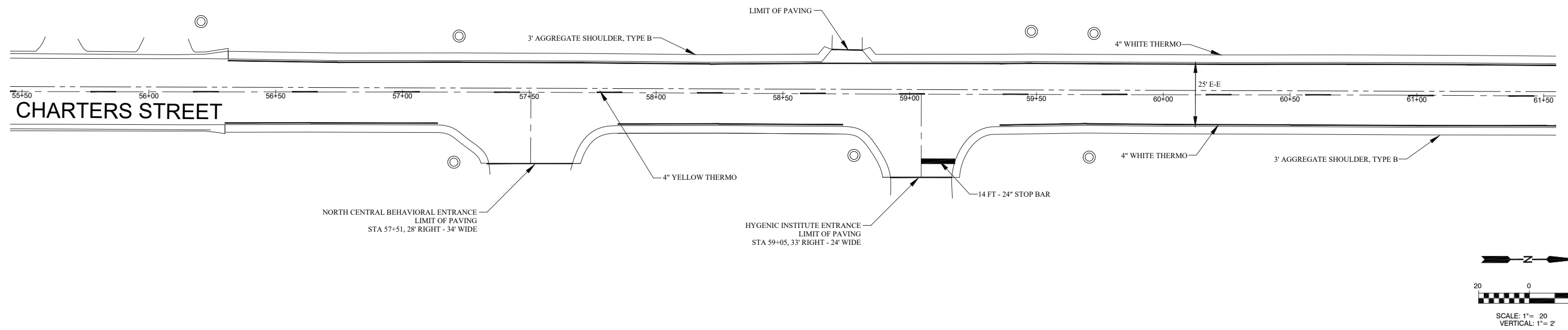
**DOUBLE PLAN SHEETS
CHARTRES STREET
STA. 43+50 TO STA. 49+50**

SCALE: 1" = 20' (Horz.)	SHEET 4
FILE NO.:	OF 7

F.A.U. RTE.	SECTION	COUNTY	TOTAL SHEETS	SHEET NO.
6104	23-00084-01-RS	LASALLE	7	5
FED. ROAD DIST. NO.	ILLINOIS	CONTRACT NO. 87836		



**DOUBLE PLAN SHEETS
CHARTRES STREET
STA. 49+50 TO STA. 55+50**



DRAWN BY: CJG	CAD:
CHECKED BY:	DATE:

REVISIONS	
DATE	BY

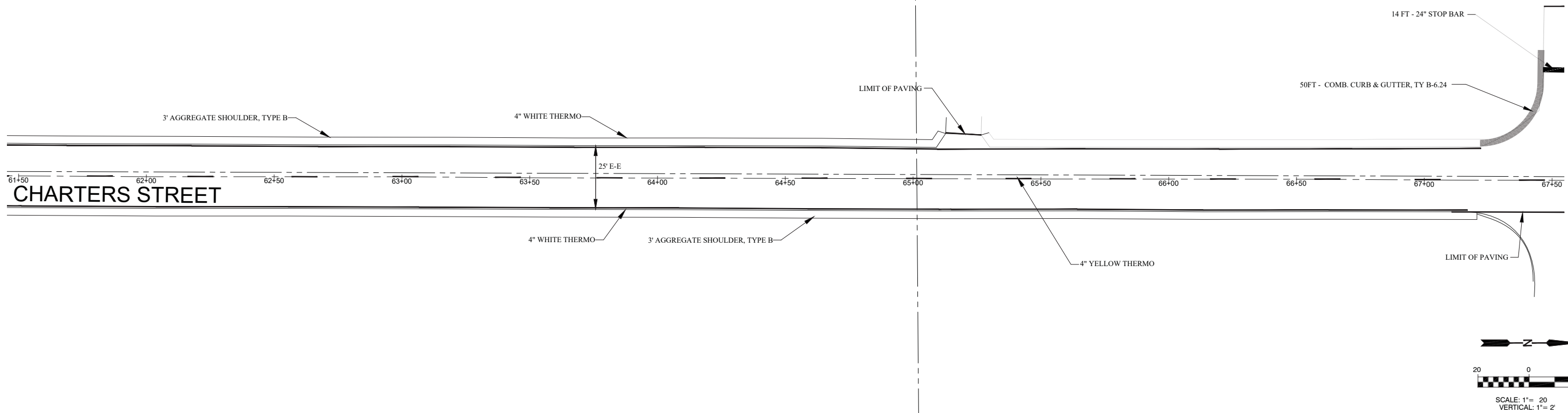


**FAU 6104 (CHARTRES STREET)
SECTION 23-00084-01-RS
CITY OF LA SALLE, LA SALLE COUNTY**

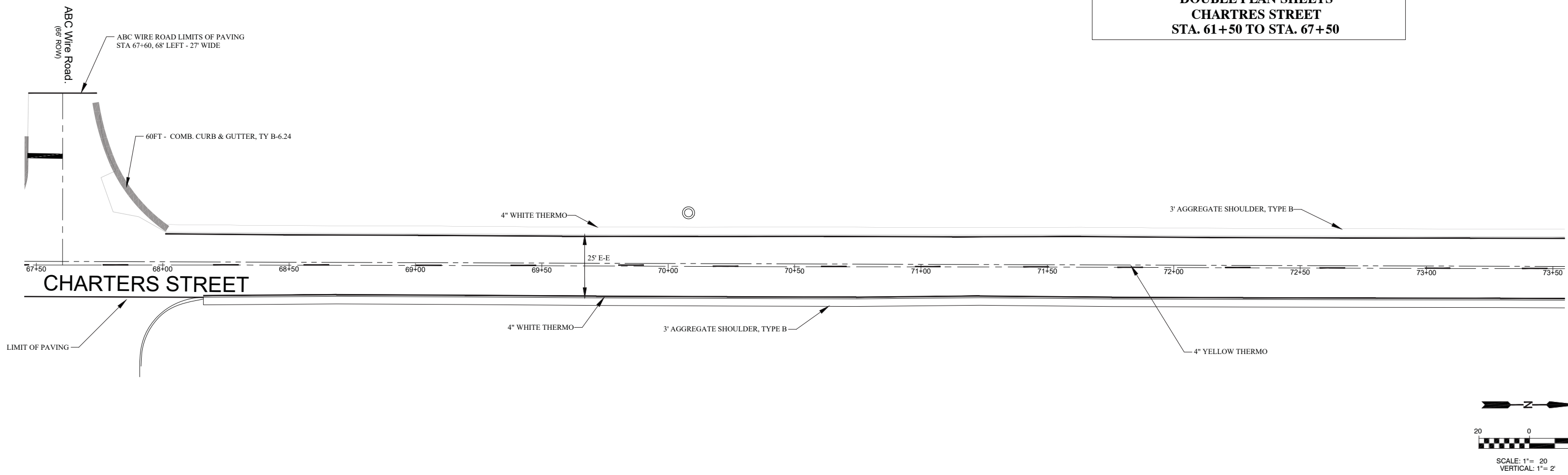
**DOUBLE PLAN SHEETS
CHARTRES STREET
STA. 55+50 TO STA. 61+50**

SCALE: 1" = 20' (Horz.)	SHEET 5
FILE NO.:	OF 7

F.A.U. RTE.	SECTION	COUNTY	TOTAL SHEETS	SHEET NO.
6104	23-00084-01-RS	LASALLE	7	6
FED. ROAD DIST. NO.	ILLINOIS	CONTRACT NO. 87836		



**DOUBLE PLAN SHEETS
CHARTRES STREET
STA. 61+50 TO STA. 67+50**



DRAWN BY: CJG	CAD:
CHECKED BY:	DATE:

REVISIONS	
DATE	BY

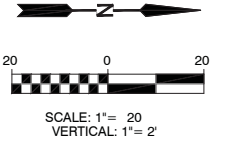
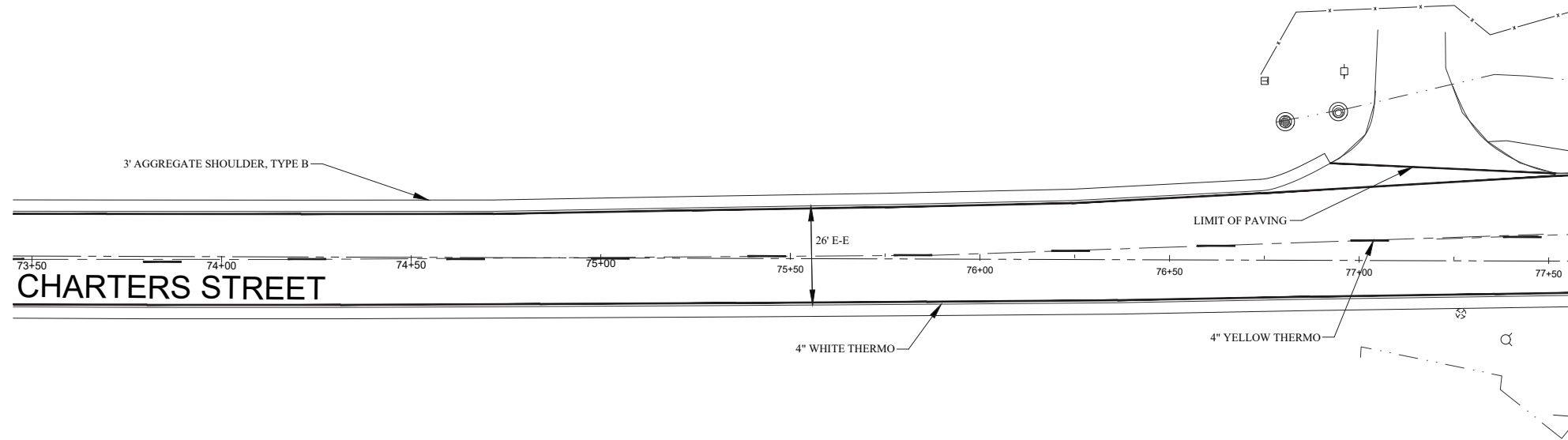


**FAU 6104 (CHARTRES STREET)
SECTION 23-00084-01-RS
CITY OF LA SALLE, LA SALLE COUNTY**

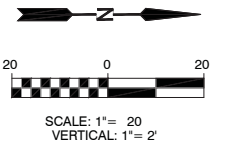
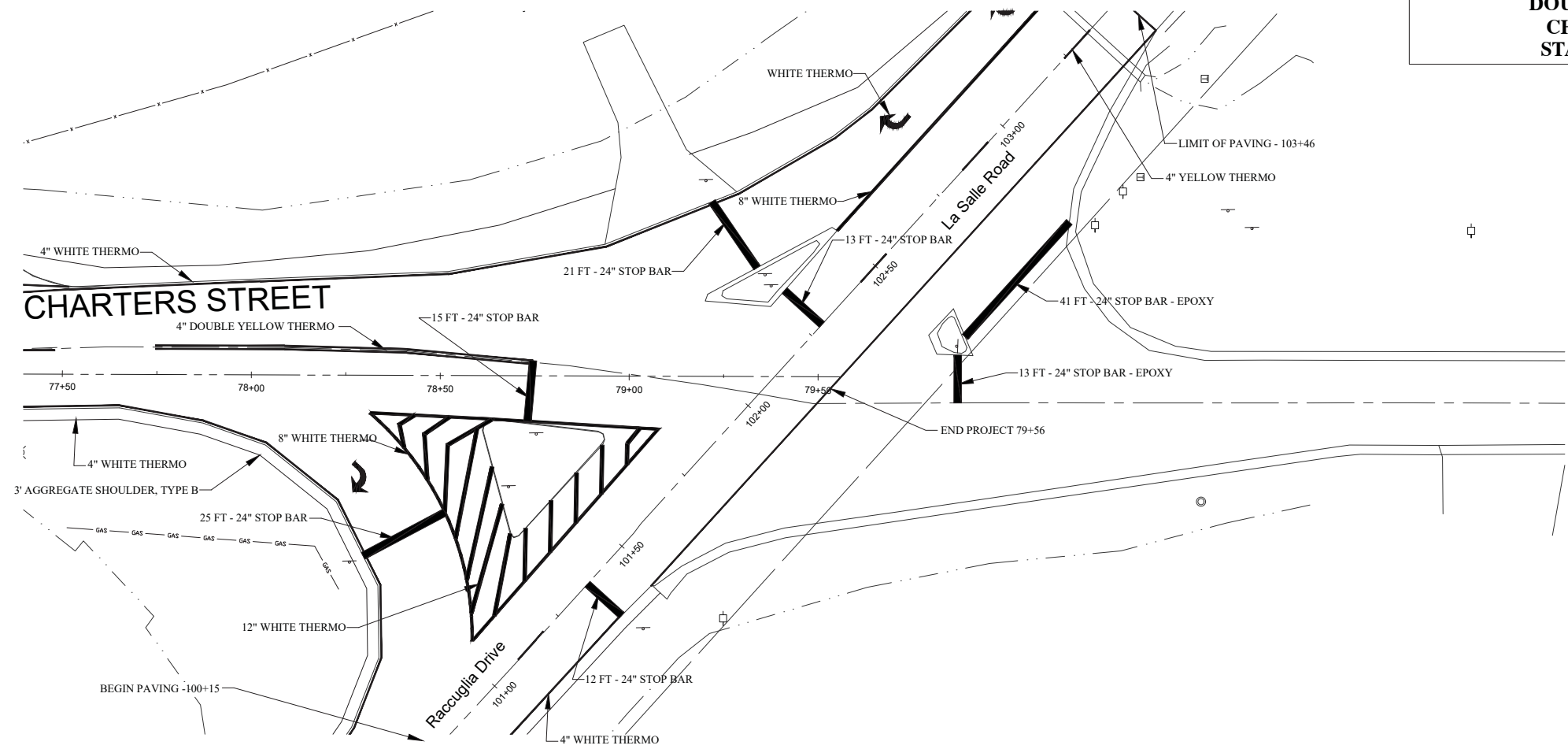
**DOUBLE PLAN SHEETS
CHARTRES STREET
STA. 67+50 TO STA. 73+50**

SCALE: 1" = 20' (Horz.)	SHEET 6
FILE NO.:	OF 7

FAU. RTE.	SECTION	COUNTY	TOTAL SHEETS	SHEET NO.
6104	23-00084-01-RS	LASALLE	7	7
FED. ROAD DIST. NO.		ILLINOIS	CONTRACT NO. 87836	



**DOUBLE PLAN SHEETS
CHARTRES STREET
STA. 73+50 TO 77+50**



DRAWN BY: CJG	CAD:
CHECKED BY:	DATE:

REVISIONS	
DATE	BY



**FAU 6104 (CHARTRES STREET)
SECTION 23-00084-01-RS
CITY OF LA SALLE, LA SALLE COUNTY**

**DOUBLE PLAN SHEETS
CHARTRES STREET
STA. 77+50 TO END STA.**

SCALE: 1" = 20' (Horz.)	SHEET 7
FILE NO.:	OF 7