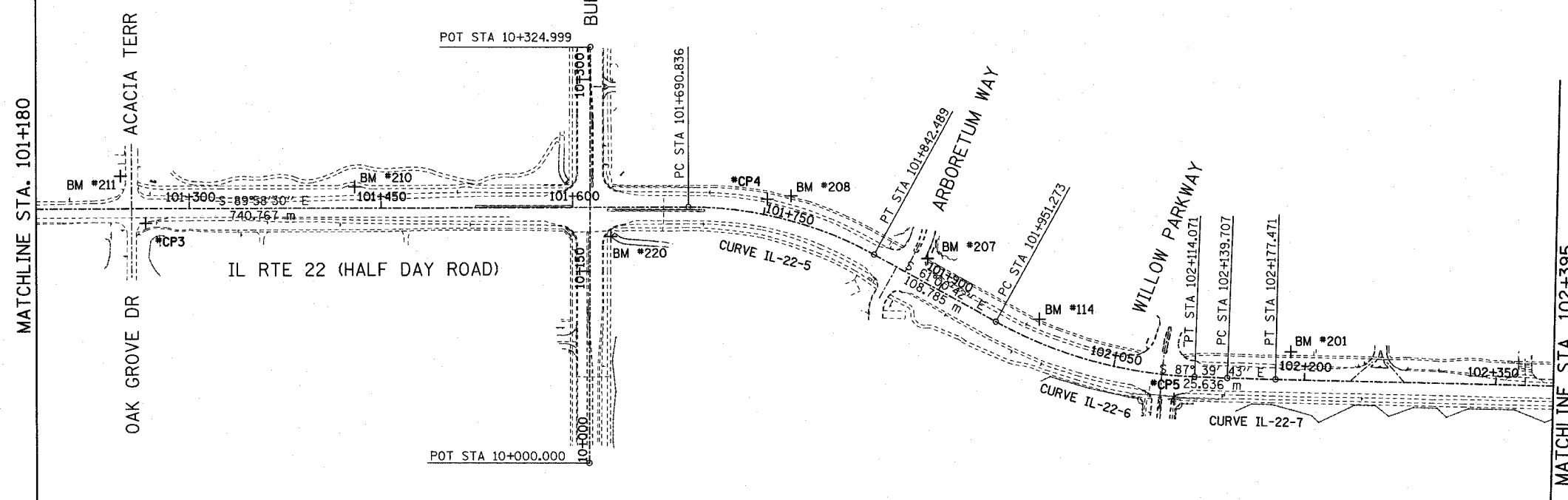
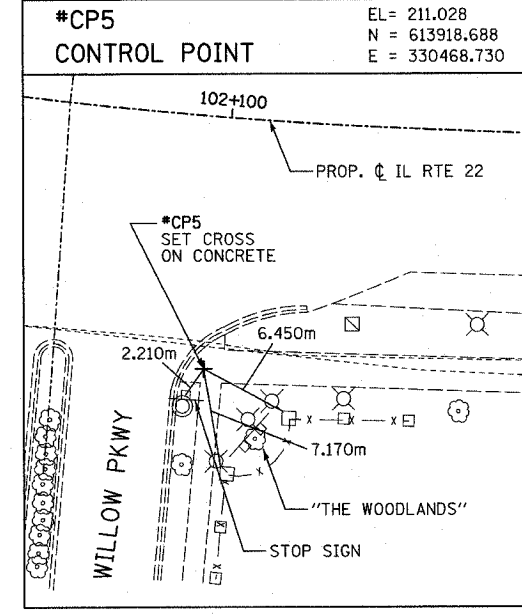
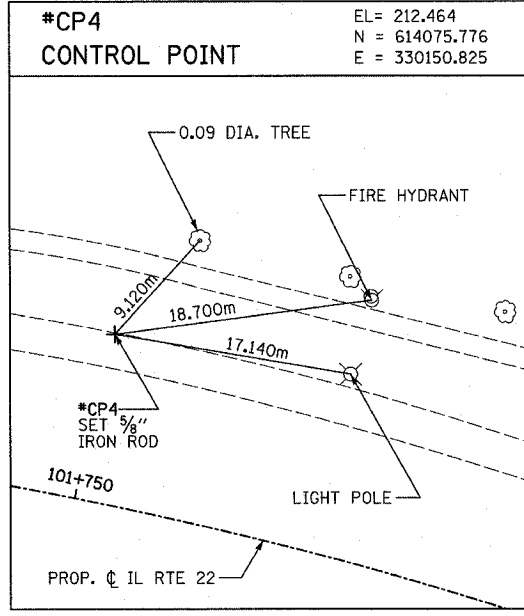
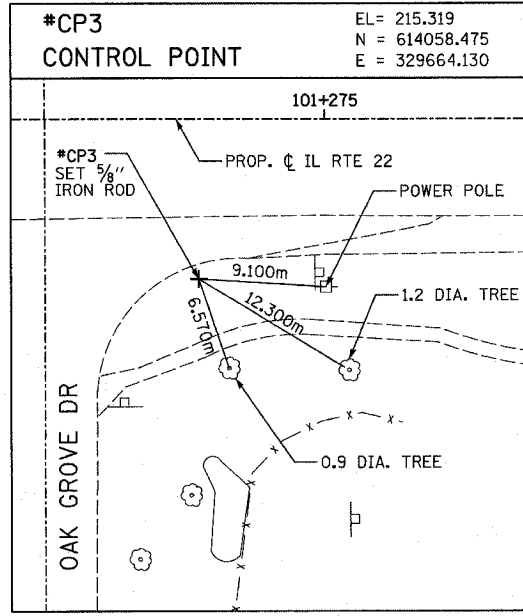


F.A.P. RTE.	SECTION	COUNTY	TOTAL SHEETS	SHEET NO.
337	20R-5	LAKE	562	44
STA. 101+180		TO STA. 102+395		
FED. ROAD DIST. NO.		ILLINOIS	FED. AID PROJECT	
D-91-552-99		60881		



Prop. Curve IL-22-5
 PI Sta. 101+768.319
 $\Delta = 28^\circ 57' 49''$ (RT)
 T = 77.484 m
 R = 300.000 m
 L = 151.653 m
 E = 9.845 m
 PC Sta. 101+690.836
 PT Sta. 101+842.489

Prop. Curve IL-22-6
 PI Sta. 102+034.172
 $\Delta = 26^\circ 39' 01''$ (LT)
 T = 82.899 m
 R = 350.000 m
 L = 162.798 m
 E = 9.684 m
 PC Sta. 101+951.273
 PT Sta. 102+114.071

Prop. Curve IL-22-7
 PI Sta. 102+158.589
 $\Delta = 0^\circ 51' 56''$ (LT)
 T = 18.882 m
 R = 2,500.000 m
 L = 37.763 m
 E = 0.071 m
 PC Sta. 102+139.707
 PT Sta. 102+177.471

BM 211
 STATION: 101+246.4 26.11m LT
 ELEVATION = 214.861
 FOUND CROSS ON TAG BOLT OF FIRE HYDRANT AT THE NORTHWEST CORNER OF ROUTE 22 AND ACACIA TERRACE IN FRONT OF HOUSE #2650.

BM 210
 STATION: 101+429.76 17.2m LT
 ELEVATION = 212.389
 FOUND CROSS ON TAG BOLT OF FIRST FIRE HYDRANT WEST BUFFALO GROVE ROAD ON THE NORTH SIDE OF ROUTE 22.

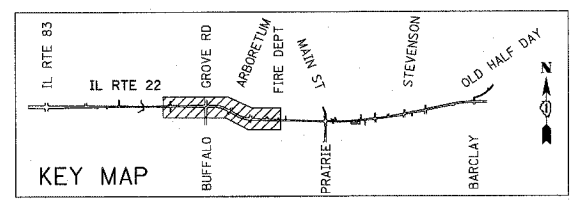
BM 220
 STATION: 101+630.17 22.49m RT
 ELEVATION = 211.576
 SET SQUARE ON SOUTHWESTERLY END OF CONCRETE HEADWALL FOR PEDESTRIAN UNDERPASS ACROSS ROUTE 22 ON THE SOUTHEAST CORNER OF ROUTE 22 AND BUFFALO GROVE ROAD.

BM 208
 STATION: 101+767.35 19.20m LT
 ELEVATION = 212.143
 SET CROSS ON THE NORTHERLY BOLT OF FIRE HYDRANT ON THE NORTH SIDE OF ROUTE 22, APPROXIMATELY 106M WEST OF ENTRANCE TO WOODLAND COMMONS.

BM 207
 STATION: 101+880.66 17.85m LT
 ELEVATION = 211.683
 SET CROSS ON THE NORTHWEST BOLT OF FIRE HYDRANT ON THE NORTHEAST CORNER ROUTE 22 AND ENTRANCE TO WOODLAND COMMONS.

BM 114
 STATION: 101+981.66 17.01m LT
 ELEVATION = 210.600
 FOUND CROSS ON NORTHEAST BOLT OF FIRE HYDRANT ON THE NORTH SIDE OF ROUTE 22 IN FRONT OF PIZZA HUT (WENDY'S).

BM 201
 STATION: 102+188.95 21.92m LT
 ELEVATION = 211.024
 SET CROSS ON THE TAG BOLT OF FIRE HYDRANT ON THE NORTH SIDE OF ROUTE 22, IN FRONT OF SUNRISE ASSISTED LIVING.



REVISIONS	
NAME	DATE

ILLINOIS DEPARTMENT OF TRANSPORTATION
 IL RTE 22 (FAP 337)
 IL RTE 83 TO US 45 / IL 21 (MILWAUKEE AVE)
 ALIGNMENT,
 TIES AND BENCHMARKS
 SHEET 2 OF 4
 SCALE: 1:2000 DRAWN BY: BK
 DATE: 03-22-2004 CHECKED BY: JNR

FINAL SURVEY	BY	DATE
SURVEYED		
COMPILED		
NOTE BOOK		
TEMPLATE		
AREAS		
CHECKED		
NO.		

ORIGINAL SURVEY	BY	DATE
SURVEYED		
COMPILED		
NOTE BOOK		
TEMPLATE		
AREAS		
CHECKED		
NO.		