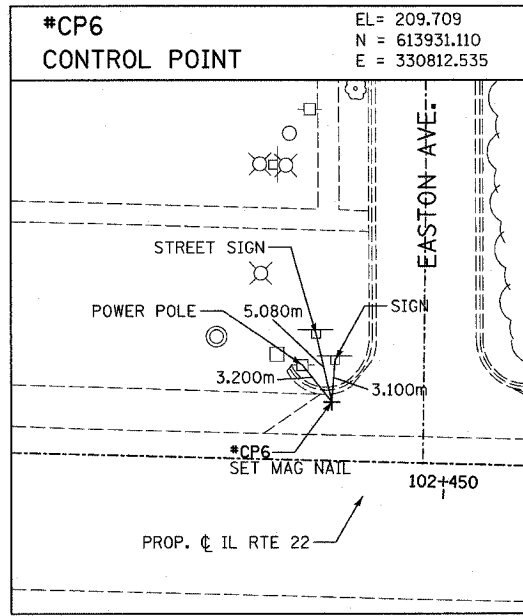


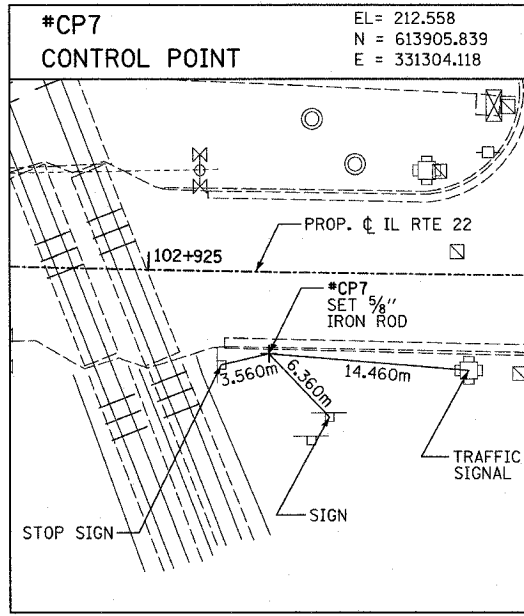
| F.A.P. RTE. | SECTION | COUNTY | TOTAL SHEETS | SHEET NO. |
|---------------------|---------|-----------------|------------------|-----------|
| 337 | 20R-5 | LAKE | 562 | 45 |
| STA. 102+395 | | TO STA. 103+750 | | |
| FED. ROAD DIST. NO. | | ILLINOIS | FED. AID PROJECT | |
| D-91-552-99 | | 60881 | | |

| | | |
|--------------------|----|------|
| FINAL SURVEY | BY | DATE |
| SURVEY PLOTTED | | |
| NOTE BOOK TEMPLATE | | |
| AREAS CHECKED | | |
| NO. | | |

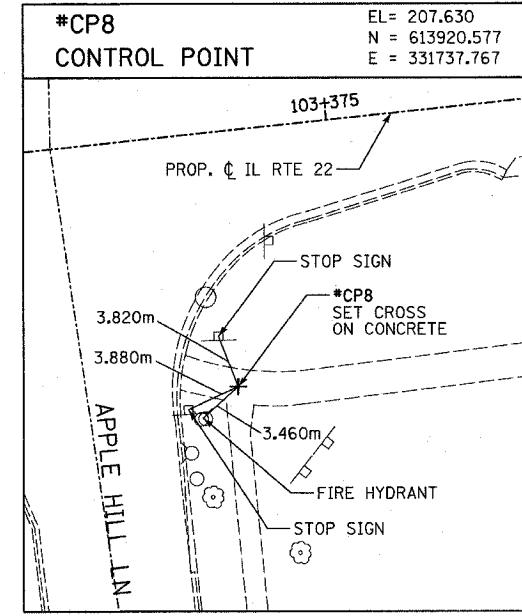
| | | |
|--------------------|----|------|
| ORIGINAL SURVEY | BY | DATE |
| SURVEY PLOTTED | | |
| NOTE BOOK TEMPLATE | | |
| AREAS CHECKED | | |
| NO. | | |



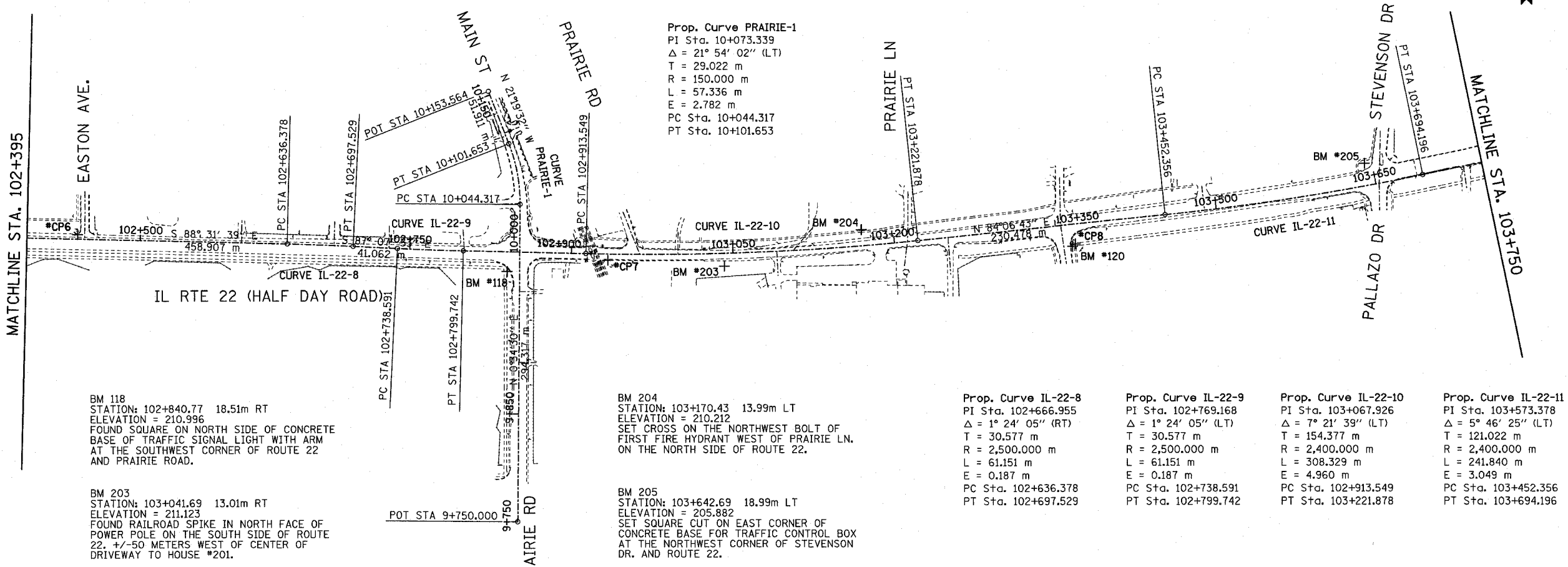
SCALE= 1:250



SCALE= 1:250



SCALE= 1:250



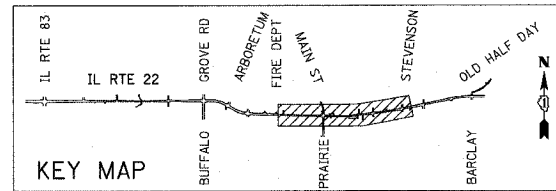
BM 118
STATION: 102+840.77 18.51m RT
ELEVATION = 210.996
FOUND SQUARE ON NORTH SIDE OF CONCRETE
BASE OF TRAFFIC SIGNAL LIGHT WITH ARM
AT THE SOUTHWEST CORNER OF ROUTE 22
AND PRAIRIE ROAD.

BM 203
STATION: 103+041.69 13.01m RT
ELEVATION = 211.123
FOUND RAILROAD SPIKE IN NORTH FACE OF
POWER POLE ON THE SOUTH SIDE OF ROUTE
22. +/-50 METERS WEST OF CENTER OF
DRIVEWAY TO HOUSE #201.

BM 120
STATION: 103+363.87 21.73m RT
ELEVATION = 208.259
FOUND CROSS ON BOLT OF FIRE HYDRANT
AT THE SOUTHEAST CORNER OF APPLE HILL
LANE AND ROUTE 22.

BM 204
STATION: 103+170.43 13.99m LT
ELEVATION = 210.212
SET CROSS ON THE NORTHWEST BOLT OF
FIRST FIRE HYDRANT WEST OF PRAIRIE LN.
ON THE NORTH SIDE OF ROUTE 22.

BM 205
STATION: 103+642.69 18.99m LT
ELEVATION = 205.882
SET SQUARE CUT ON EAST CORNER OF
CONCRETE BASE FOR TRAFFIC CONTROL BOX
AT THE NORTHWEST CORNER OF STEVENSON
DR. AND ROUTE 22.



| REVISIONS | |
|-----------|------|
| NAME | DATE |
| | |
| | |
| | |
| | |
| | |

ILLINOIS DEPARTMENT OF TRANSPORTATION
IL RTE 22 (FAP 337)
IL RTE 83 TO US 45 / IL 21 (MILWAUKEE AVE)
ALIGNMENT,
TIES AND BENCHMARKS
SHEET 3 OF 4

SCALE: AS SHOWN DRAWN BY: BK
DATE: 03-22-2004 CHECKED BY: JNR