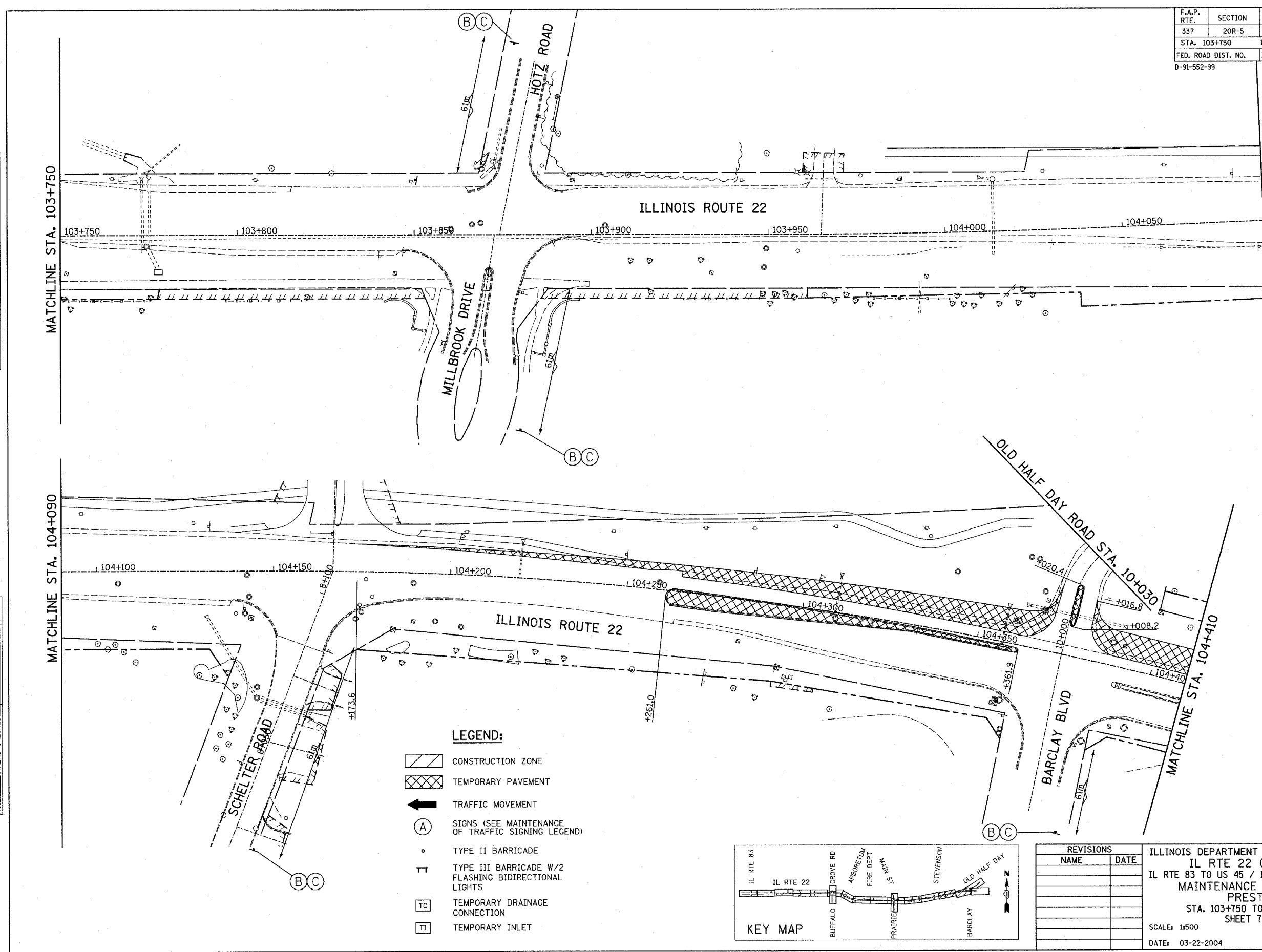


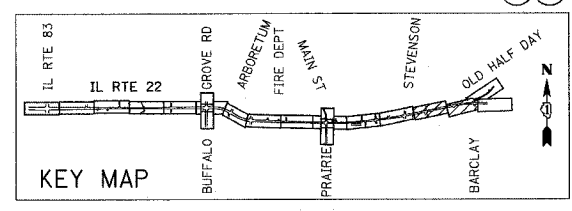
F.A.P. RTE.	SECTION	COUNTY	TOTAL SHEETS	SHEET NO.
337	20R-5	LAKE	562	85
STA. 103+750		TO STA. 104+450		
FED. ROAD DIST. NO.		ILLINOIS	FED. AID PROJECT	
D-91-552-99		60881		

FINAL SURVEY	BY	DATE
SURVEY PLOTTED		
NOTE BOOK		
AREAS CHECKED		
NO.		

ORIGINAL SURVEY	BY	DATE
SURVEY PLOTTED		
NOTE BOOK		
AREAS CHECKED		
NO.		



- LEGEND:**
- CONSTRUCTION ZONE
 - TEMPORARY PAVEMENT
 - TRAFFIC MOVEMENT
 - SIGNS (SEE MAINTENANCE OF TRAFFIC SIGNING LEGEND)
 - TYPE II BARRICADE
 - TYPE III BARRICADE W/2 FLASHING BIDIRECTIONAL LIGHTS
 - TEMPORARY DRAINAGE CONNECTION
 - TEMPORARY INLET



REVISIONS	
NAME	DATE

ILLINOIS DEPARTMENT OF TRANSPORTATION
 IL RTE 22 (FAP 337)
 IL RTE 83 TO US 45 / IL 21 (MILWAUKEE AVE)
 MAINTENANCE OF TRAFFIC
 PRESTAGE
 STA. 103+750 TO STA. 104+450
 SHEET 7 OF 9
 SCALE: 1:500
 DATE: 03-22-2004
 DRAWN BY: JPM
 CHECKED BY: JNR

