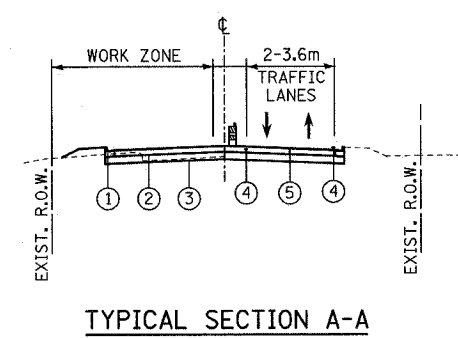
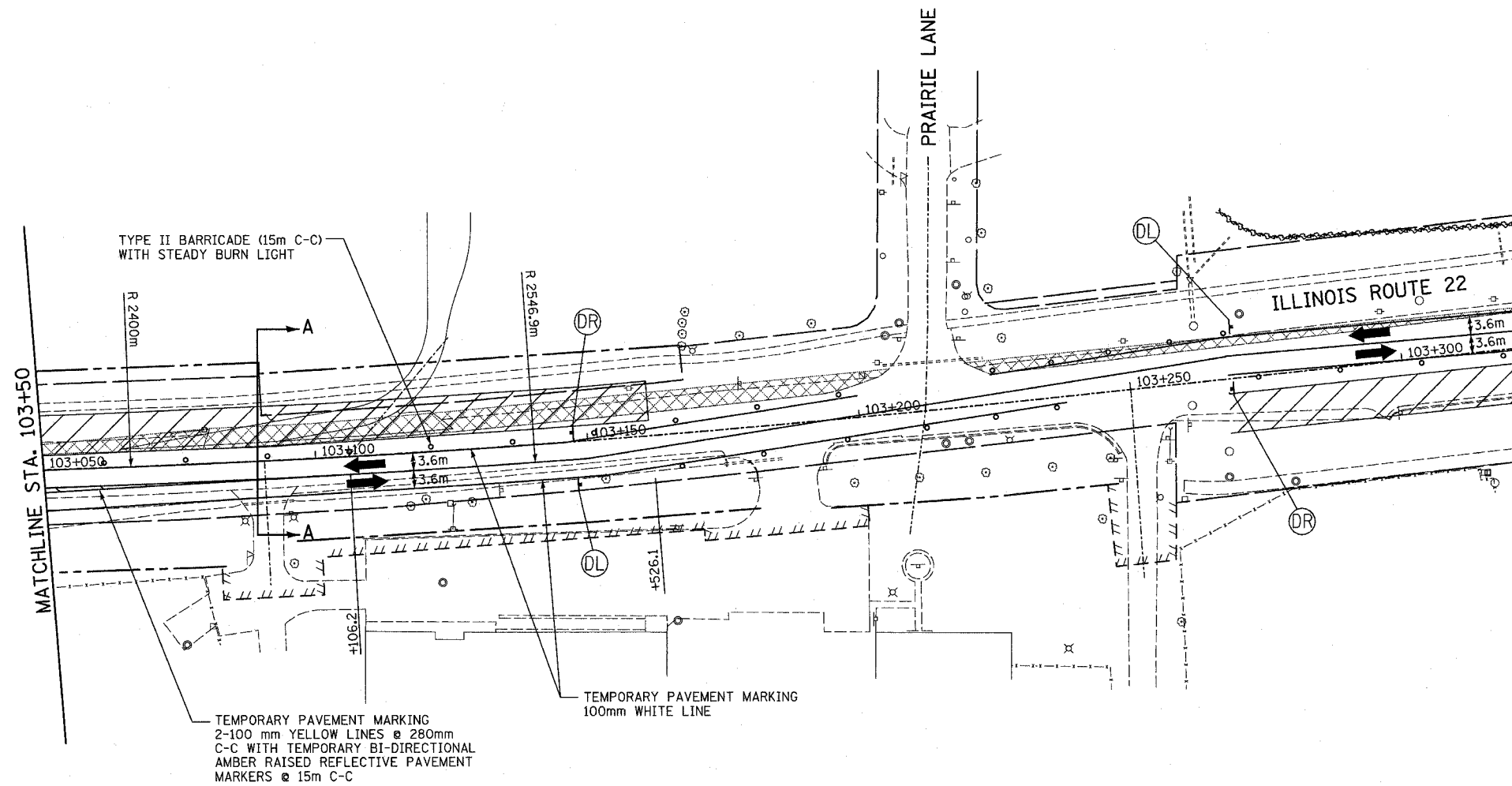


F.A.P. RTE.	SECTION	COUNTY	TOTAL SHEETS	SHEET NO.
337	20R-5	LAKE	562	100
STA.		TO STA.		
FED. ROAD DIST. NO.		ILLINOIS FED. AID PROJECT		
D-91-552-99		60881		

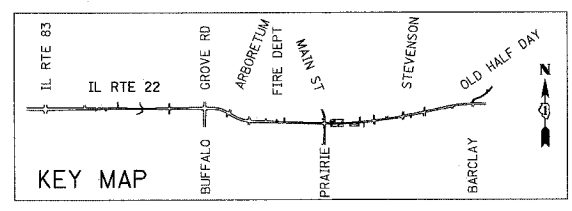
FINAL SURVEY	BY	DATE
SURVEYED		
NOTE BOOK		
TEMPLATE		
AREAS CHECKED		
NO.		

ORIGINAL SURVEY	BY	DATE
SURVEYED		
NOTE BOOK		
TEMPLATE		
AREAS CHECKED		
NO.		



- ① PROP. CC&G TB15.60
- ② PROP. PCC PAVEMENT
- ③ PROP. AGGREGATE SUBGRADE
- ④ TEMP. PAVEMENT MARKING 100mm WHITE LINE
- ⑤ TEMP. PAVEMENT MARKING 2-100 mm YELLOW LINES @ 280mm C-C WITH TEMP. BI-DIRECTIONAL AMBER RAISED REFLECTIVE PAVEMENT MARKERS @ 15m C-C

- LEGEND:**
- CONSTRUCTION ZONE
 - TEMPORARY PAVEMENT
 - TRAFFIC MOVEMENT
 - SIGNS (SEE MAINTENANCE OF TRAFFIC SIGNING LEGEND)
 - TYPE II BARRICADE
 - TYPE III BARRICADE W/2 FLASHING BIDIRECTIONAL LIGHTS
 - TEMPORARY DRAINAGE CONNECTION
 - TEMPORARY INLET



REVISIONS		ILLINOIS DEPARTMENT OF TRANSPORTATION IL RTE 22 (FAP 337) IL RTE 83 TO US 45 / IL 21 (MILWAUKEE AVE) MAINTENANCE OF TRAFFIC STAGE 1A INTERSECTION IL RTE 22 & OLD HALF DAY ROAD SHEET 4 OF 4
NAME	DATE	
		SCALE: 1:500
		DATE: 03-22-2004
		DRAWN BY: JPM
		CHECKED BY: JNR