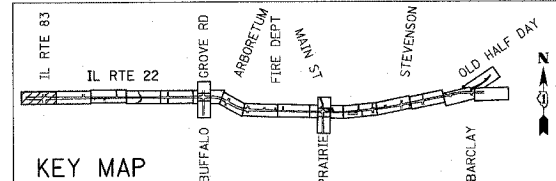
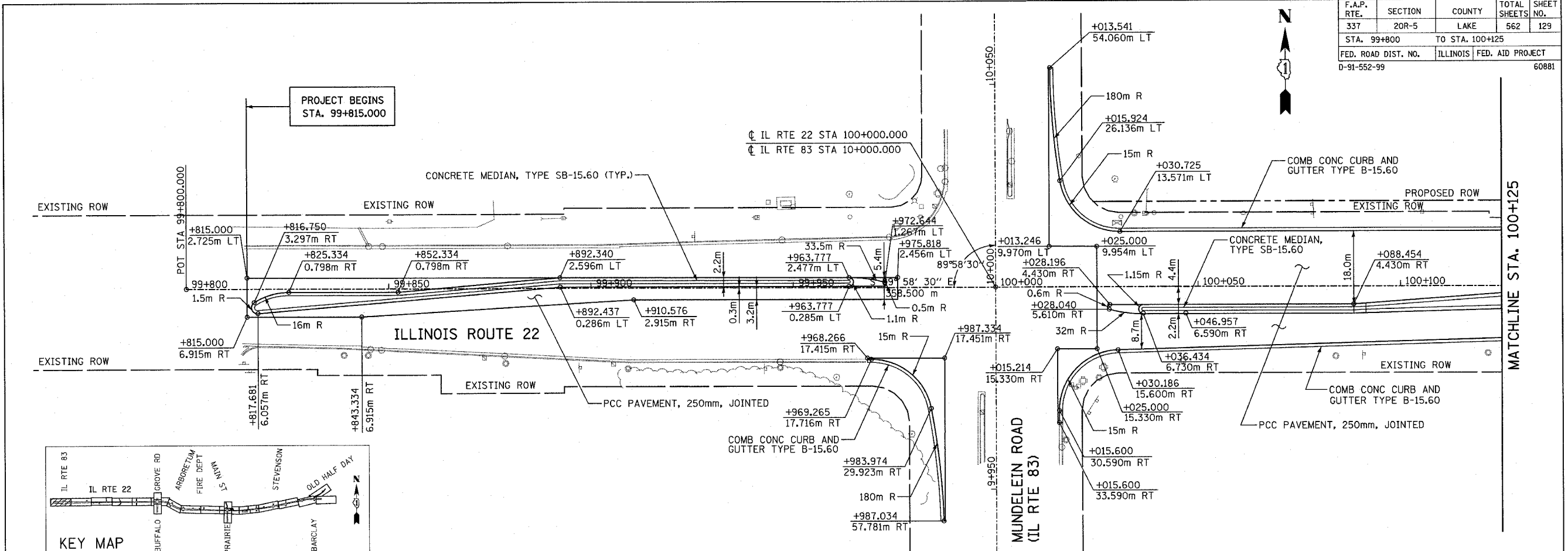


|                     |         |                 |                  |           |
|---------------------|---------|-----------------|------------------|-----------|
| F.A.P. RTE.         | SECTION | COUNTY          | TOTAL SHEETS     | SHEET NO. |
| 337                 | 20R-5   | LAKE            | 562              | 129       |
| STA. 99+800         |         | TO STA. 100+125 |                  |           |
| FED. ROAD DIST. NO. |         | ILLINOIS        | FED. AID PROJECT |           |
| D-91-552-99         |         | 60881           |                  |           |

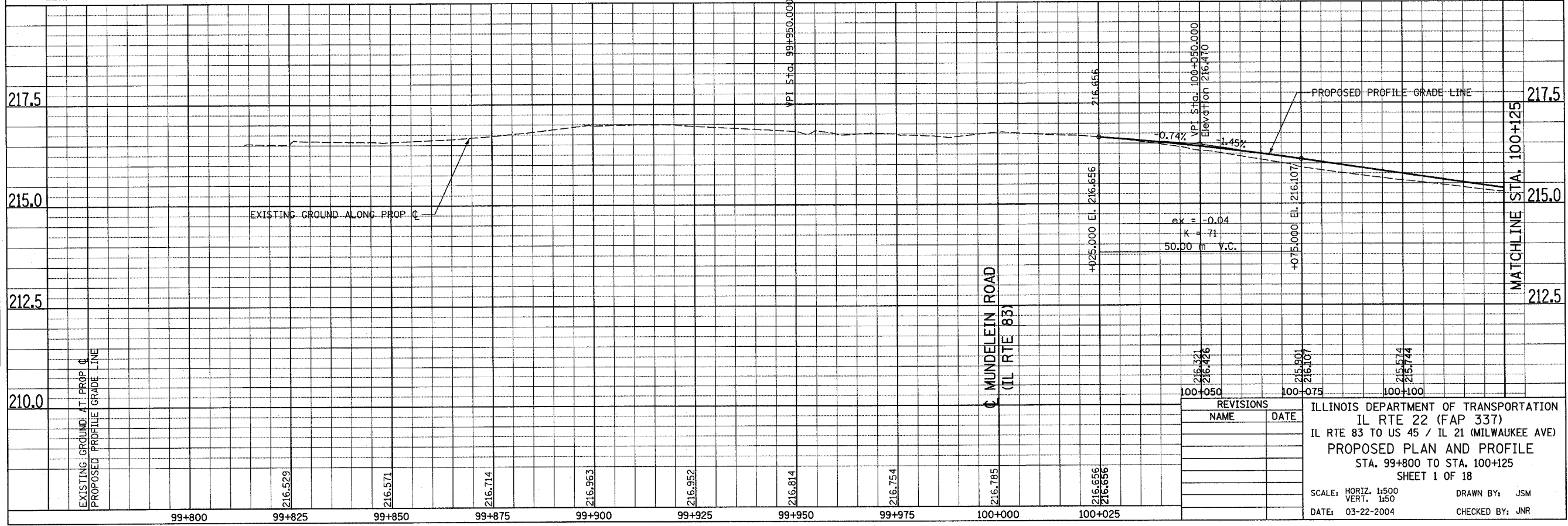


PROJECT BEGINS  
STA. 99+815.000



|                      |      |
|----------------------|------|
| BY                   | DATE |
|                      |      |
| FINAL SURVEY PLOTTED |      |
| NOTE BOOK TEMPLATE   |      |
| AREAS CHECKED        |      |
| NO.                  |      |

|                         |      |
|-------------------------|------|
| BY                      | DATE |
|                         |      |
| ORIGINAL SURVEY PLOTTED |      |
| NOTE BOOK TEMPLATE      |      |
| AREAS CHECKED           |      |
| NO.                     |      |



| REVISIONS |      |
|-----------|------|
| NAME      | DATE |
|           |      |
|           |      |
|           |      |

ILLINOIS DEPARTMENT OF TRANSPORTATION  
 IL RTE 22 (FAP 337)  
 IL RTE 83 TO US 45 / IL 21 (MILWAUKEE AVE)  
 PROPOSED PLAN AND PROFILE  
 STA. 99+800 TO STA. 100+125  
 SHEET 1 OF 18

SCALE: HORIZ. 1:500  
 VERT. 1:50

DATE: 03-22-2004

DRAWN BY: JSM  
 CHECKED BY: JNR