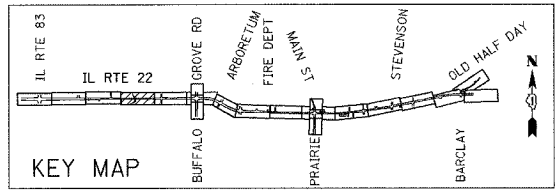
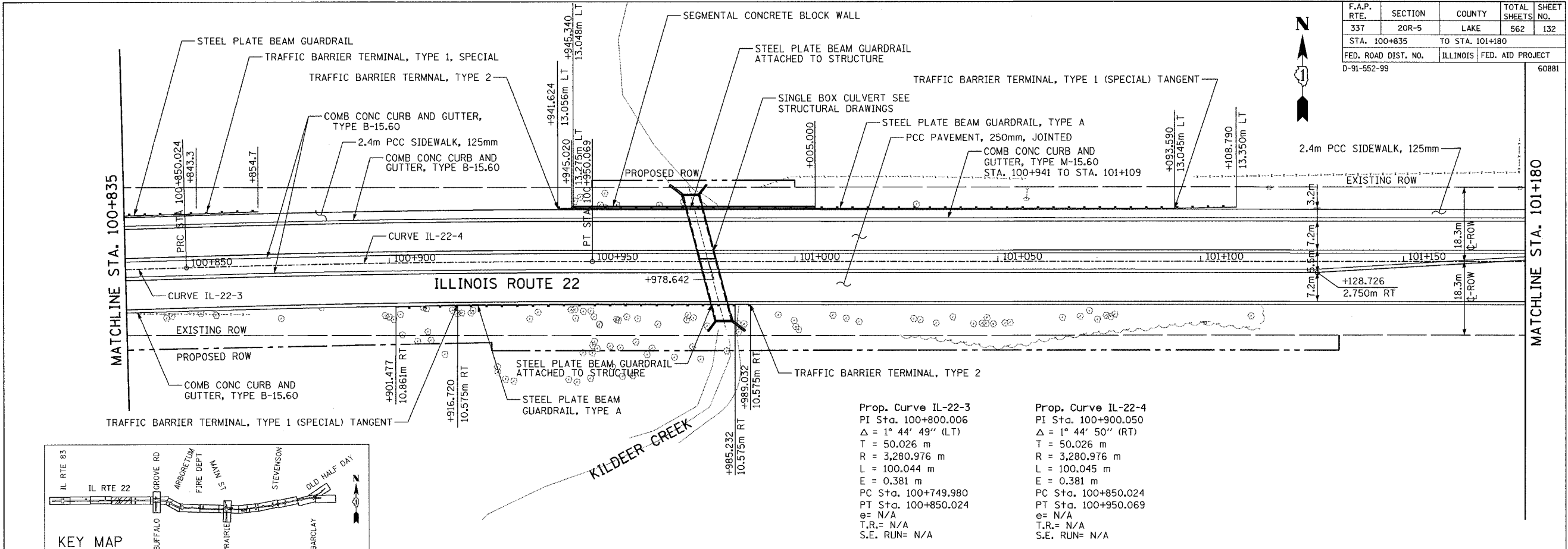
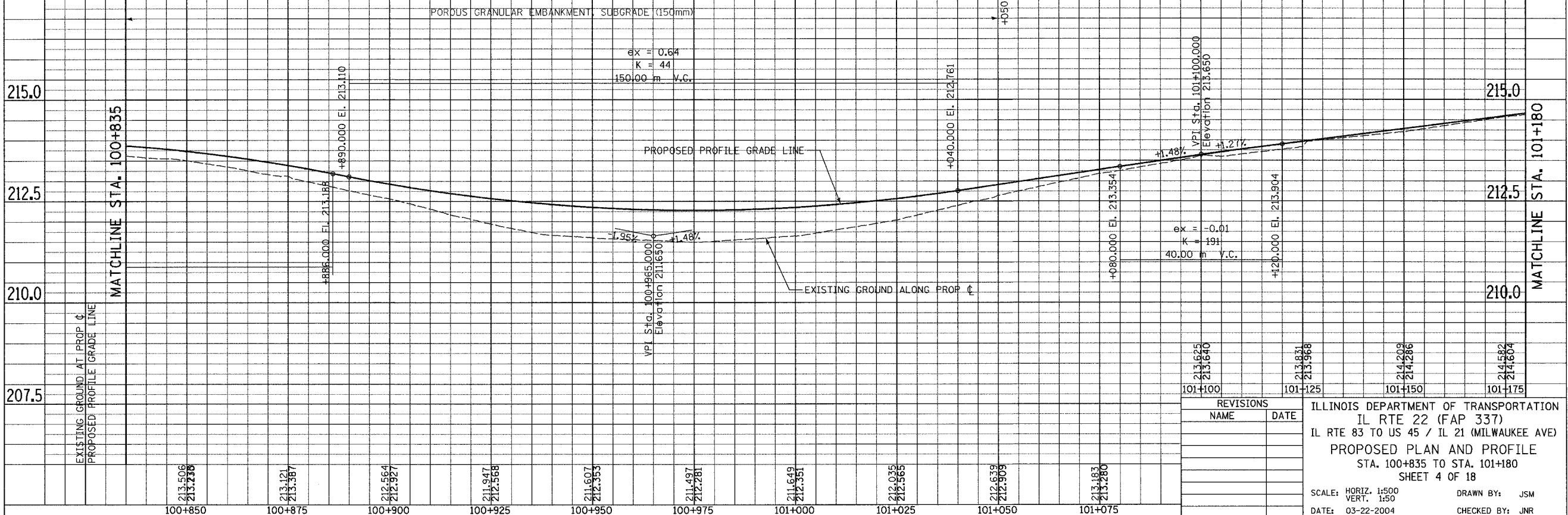


F.A.P. RTE.	SECTION	COUNTY	TOTAL SHEETS	SHEET NO.
337	20R-5	LAKE	562	132
STA. 100+835		TO STA. 101+180		
FED. ROAD DIST. NO.		ILLINOIS	FED. AID PROJECT	
D-91-552-99		60881		

FINAL SURVEY	BY	DATE
SURVEY PLOTTED		
NOTE BOOK		
TEMPLATE		
AREAS CHECKED		
NO.		



ORIGINAL SURVEY	BY	DATE
SURVEY PLOTTED		
NOTE BOOK		
TEMPLATE		
AREAS CHECKED		
NO.		



REVISIONS	
NAME	DATE

ILLINOIS DEPARTMENT OF TRANSPORTATION
 IL RTE 22 (FAP 337)
 IL RTE 83 TO US 45 / IL 21 (MILWAUKEE AVE)
 PROPOSED PLAN AND PROFILE
 STA. 100+835 TO STA. 101+180
 SHEET 4 OF 18

SCALE: HORIZ. 1:500
 VERT. 1:50
 DATE: 03-22-2004
 DRAWN BY: JSM
 CHECKED BY: JNR

P:\000000\000000\FAP 337\20R-5\11-18-04.dwg