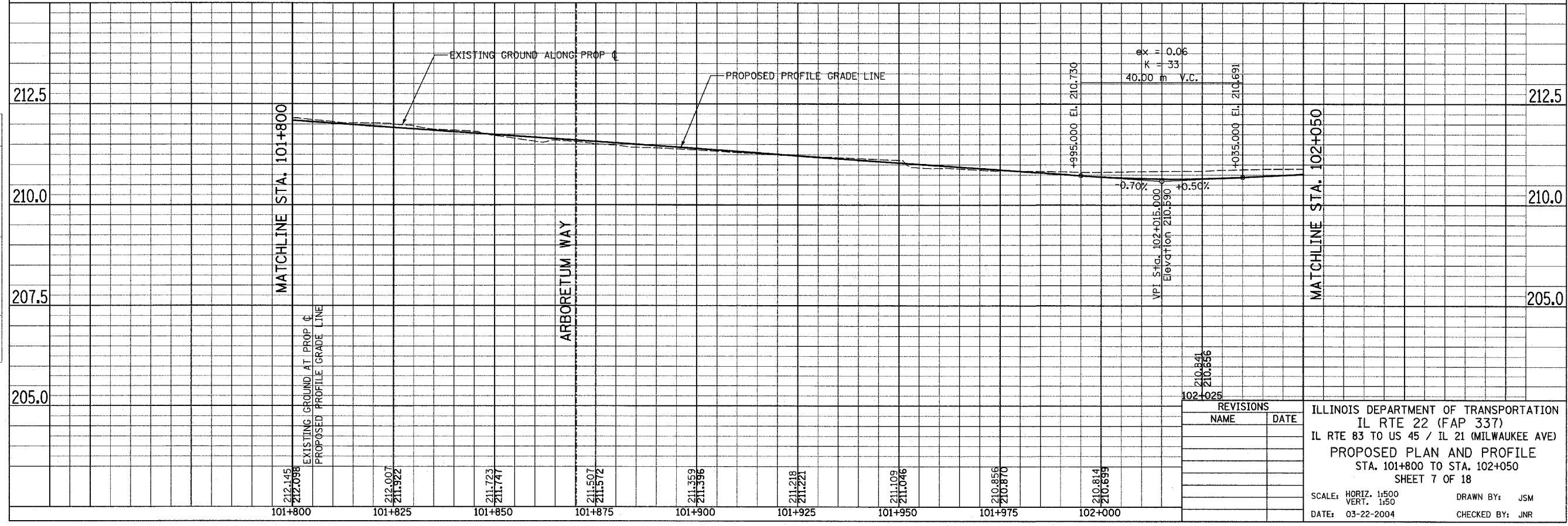
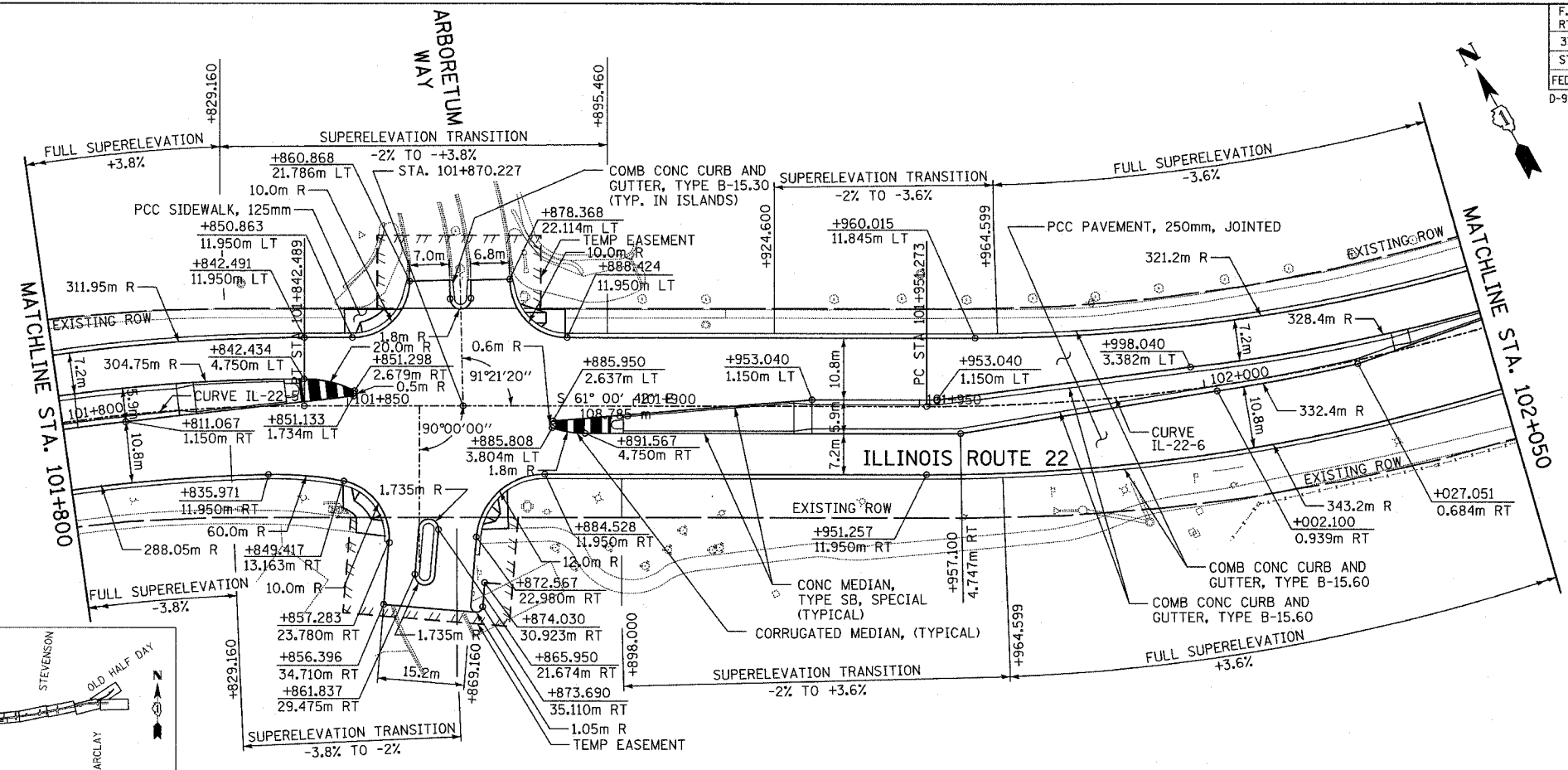
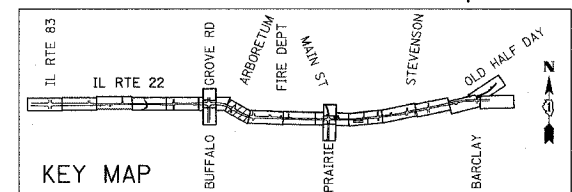


F.A.P. RTE.	SECTION	COUNTY	TOTAL SHEETS	SHEET NO.
337	20R-5	LAKE	562	135
STA. 101+800		TO STA. 102+050		
FED. ROAD DIST. NO.		ILLINOIS FED. AID PROJECT		
D-91-552-99		60881		

Prop. Curve IL-22-5
 PI Sta. 101+768.319
 $\Delta = 28^\circ 57' 49''$ (RT)
 $T = 77.484$ m
 $R = 300.000$ m
 $L = 151.653$ m
 $E = 9.845$ m
 PC Sta. 101+690.836
 PT Sta. 101+842.489
 $e = 3.8\%$
 $T.R. = 26$ m
 $S.E. RUN = 40$ m

Prop. Curve IL-22-6
 PI Sta. 102+034.172
 $\Delta = 26^\circ 39' 01''$ (LT)
 $T = 82.899$ m
 $R = 350.000$ m
 $L = 162.798$ m
 $E = 9.684$ m
 PC Sta. 101+951.273
 PT Sta. 102+114.071
 $e = 3.6\%$
 $T.R. = 26$ m
 $S.E. RUN = 40$ m

FINAL SURVEY	DATE
SURVEY PLOTTED	
NOTE BOOK	
TEMPLATE	
AREAS CHECKED	
NO.	



ORIGINAL SURVEY	DATE
SURVEY PLOTTED	
NOTE BOOK	
TEMPLATE	
AREAS CHECKED	
NO.	

REVISIONS	
NAME	DATE

ILLINOIS DEPARTMENT OF TRANSPORTATION
 IL RTE 22 (FAP 337)
 IL RTE 83 TO US 45 / IL 21 (MILWAUKEE AVE)
 PROPOSED PLAN AND PROFILE
 STA. 101+800 TO STA. 102+050
 SHEET 7 OF 18

SCALE: HORIZ. 1:500
 VERT. 1:50
 DATE: 03-22-2004
 DRAWN BY: JSM
 CHECKED BY: JNR