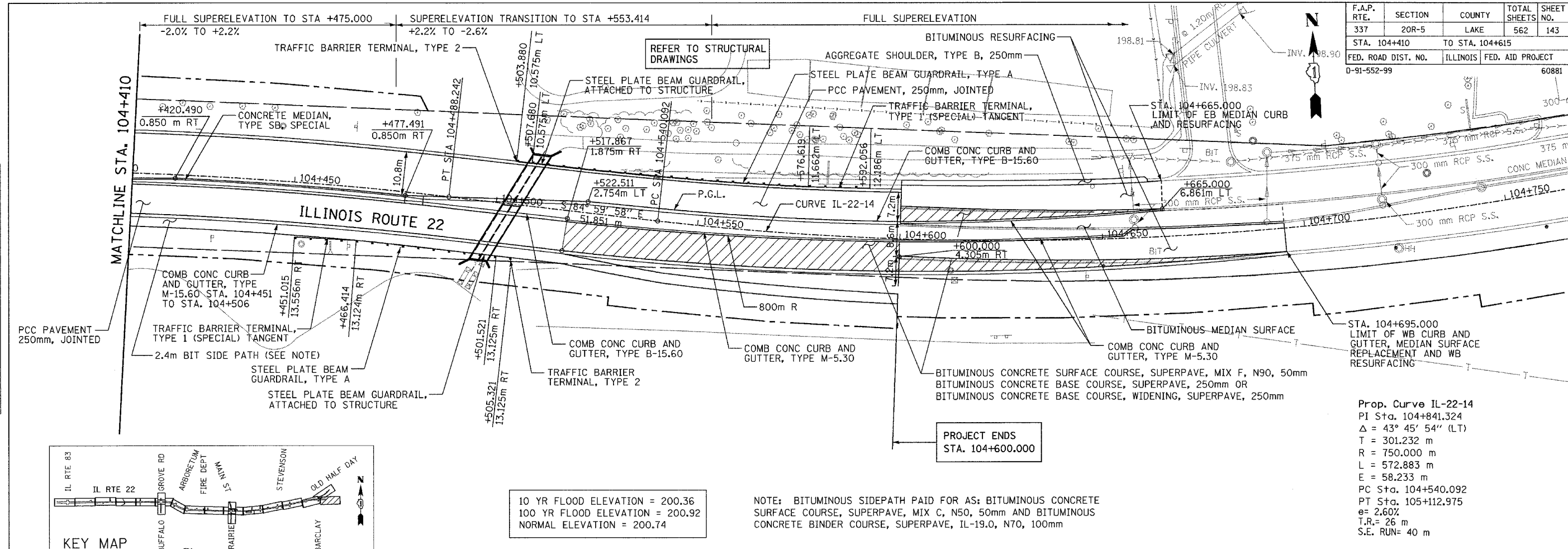
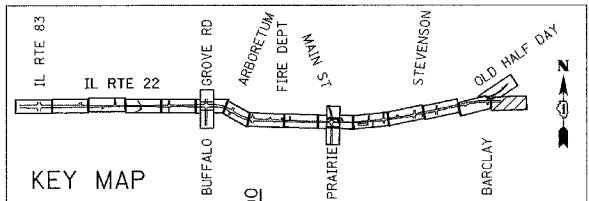


F.A.P. RTE.	SECTION	COUNTY	TOTAL SHEETS	SHEET NO.
337	20R-5	LAKE	562	143
STA. 104+410		TO STA. 104+615		
FED. ROAD DIST. NO.		ILLINOIS	FED. AID PROJECT	
0-91-552-99		60881		



FINAL SURVEY PLOTTED	BY	DATE
NOTE BOOK TEMPLATE		
AREAS CHECKED		

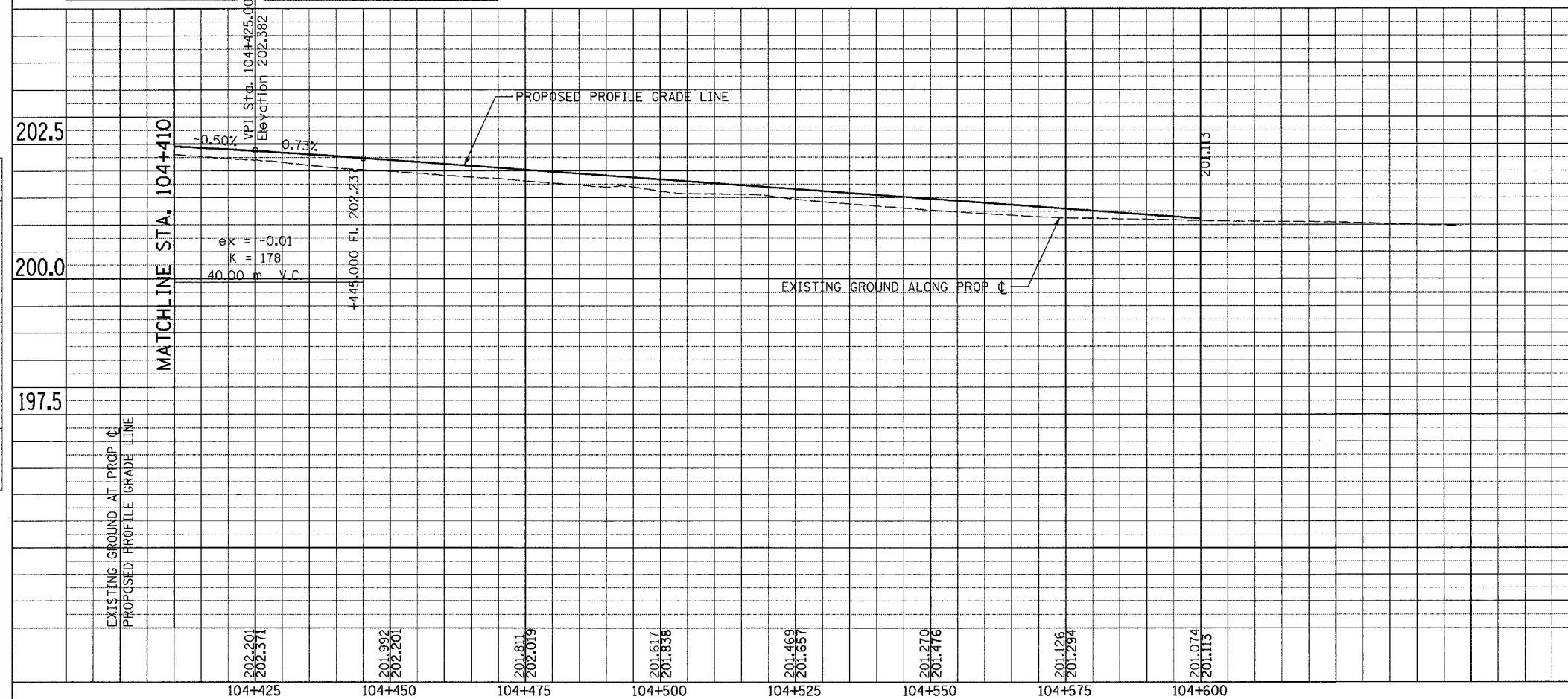


10 YR FLOOD ELEVATION = 200.36
 100 YR FLOOD ELEVATION = 200.92
 NORMAL ELEVATION = 200.74

NOTE: BITUMINOUS SIDEPATH PAID FOR AS: BITUMINOUS CONCRETE SURFACE COURSE, SUPERPAVE, MIX C, N50, 50mm AND BITUMINOUS CONCRETE BINDER COURSE, SUPERPAVE, IL-19.0, N70, 100mm

Prop. Curve IL-22-14
 PI Sta. 104+841.324
 $\Delta = 43^\circ 45' 54''$ (LT)
 T = 301.232 m
 R = 750.000 m
 L = 572.883 m
 E = 58.233 m
 PC Sta. 104+540.092
 PT Sta. 105+112.975
 $e = 2.60\%$
 T.R. = 26 m
 S.E. RUN = 40 m

ORIGINAL SURVEY PLOTTED	BY	DATE
NOTE BOOK TEMPLATE		
AREAS CHECKED		



REVISIONS NAME	DATE

ILLINOIS DEPARTMENT OF TRANSPORTATION
 IL RTE 22 (FAP 337)
 IL RTE 83 TO US 45 / IL 21 (MILWAUKEE AVE)
 PROPOSED PLAN AND PROFILE
 STA. 104+410 TO 104+600
 SHEET 15 OF 18

SCALE: HORIZ. 1:500
 VERT. 1:50
 DATE: 03-22-2004

DRAWN BY: JSM
 CHECKED BY: JNR