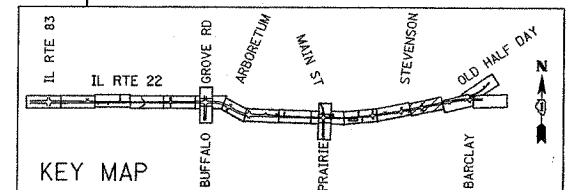
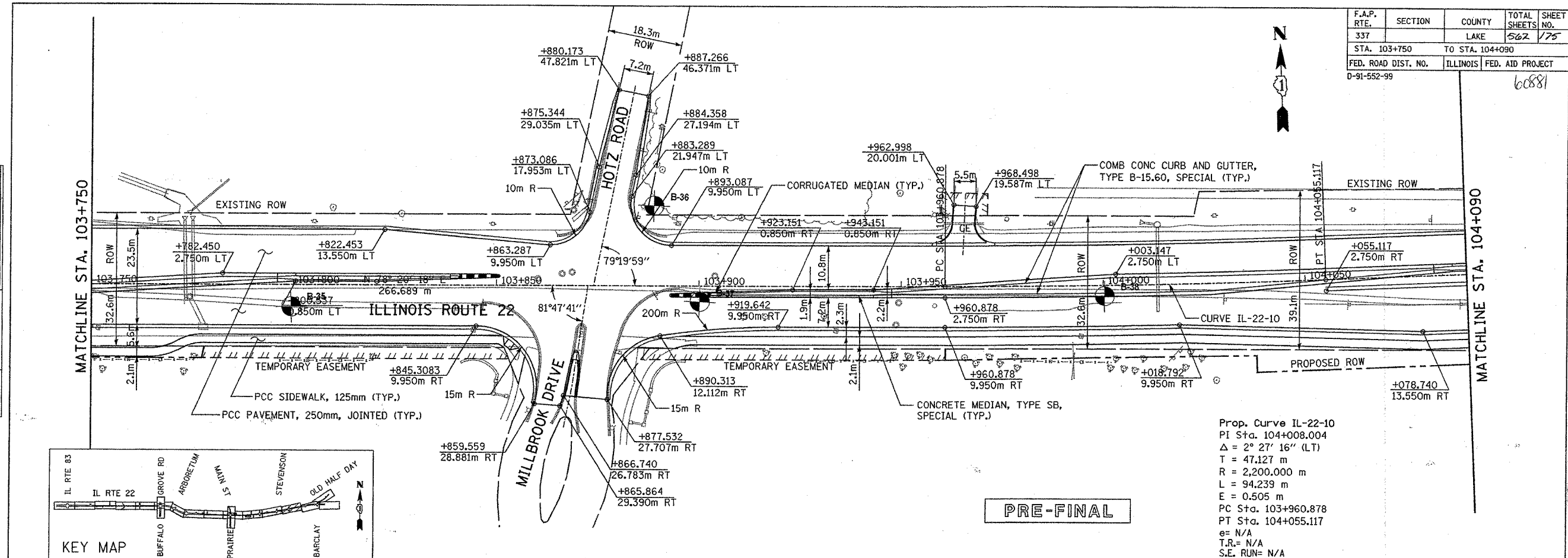


F.A.P. RTE.	SECTION	COUNTY	TOTAL SHEETS	SHEET NO.
337		LAKE	562	175
STA. 103+750		TO STA. 104+090		
FED. ROAD DIST. NO.		ILLINOIS	FED. AID PROJECT	
D-91-552-99		60881		

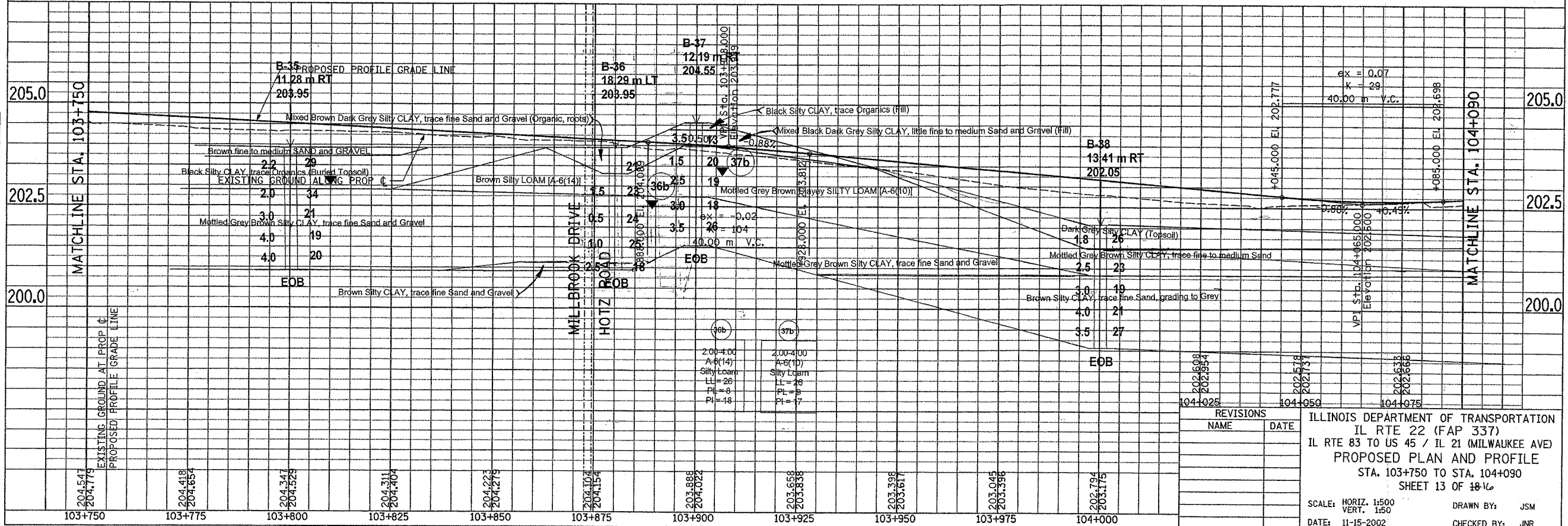
FINAL SURVEY	BY	DATE
SURVEY PLOTTED		
NOTE BOOK		
TEMPLATE		
AREAS CHECKED		



Prop. Curve IL-22-10
 PI Sta. 104+008.004
 $\Delta = 2^\circ 27' 16''$ (LT)
 $T = 47.127$ m
 $R = 2,200.000$ m
 $L = 94.239$ m
 $E = 0.505$ m
 PC Sta. 103+960.878
 PT Sta. 104+055.117
 $e = N/A$
 $T.R. = N/A$
 $S.E. RUN = N/A$

PRE-FINAL

ORIGINAL SURVEY	BY	DATE
SURVEY PLOTTED		
NOTE BOOK		
TEMPLATE		
AREAS CHECKED		



REVISIONS	NAME	DATE

ILLINOIS DEPARTMENT OF TRANSPORTATION
 IL RTE 22 (FAP 337)
 IL RTE 83 TO US 45 / IL 21 (MILWAUKEE AVE)
 PROPOSED PLAN AND PROFILE
 STA. 103+750 TO STA. 104+090
 SHEET 13 OF 16
 SCALE: HORIZ. 1:500
 VERT. 1:50
 DATE: 11-15-2002
 DRAWN BY: JSM
 CHECKED BY: JNR