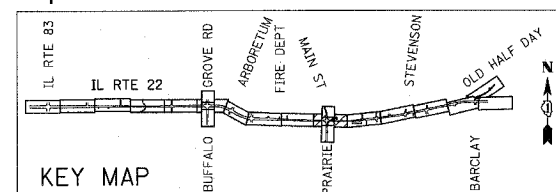
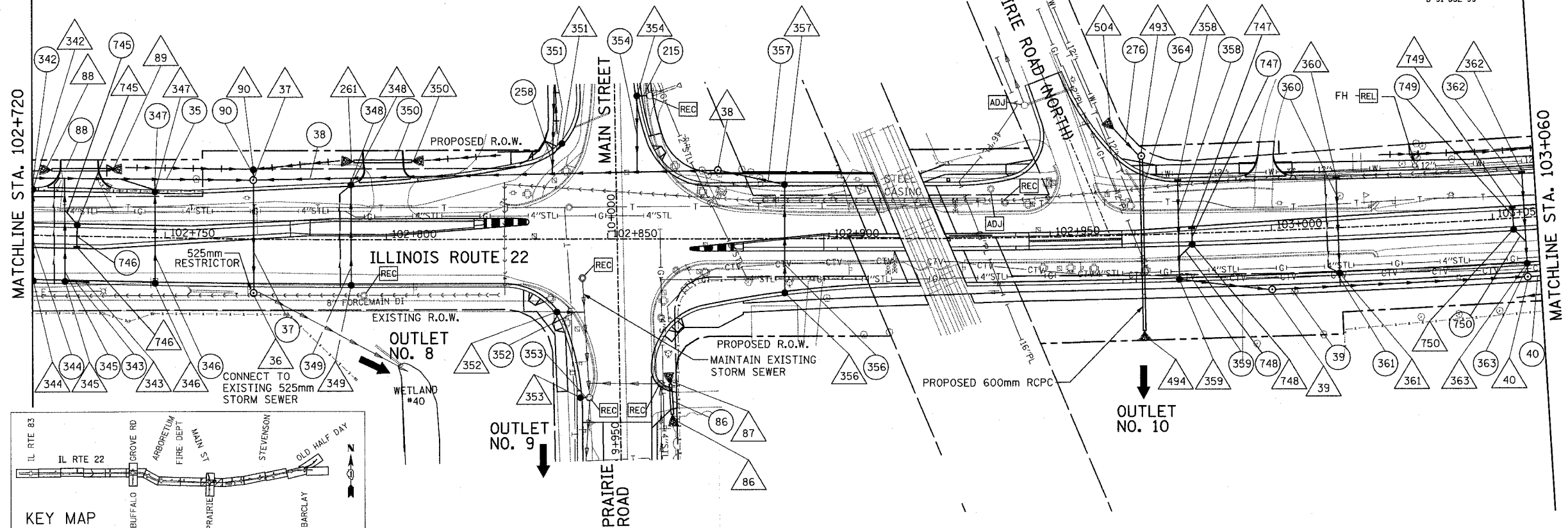
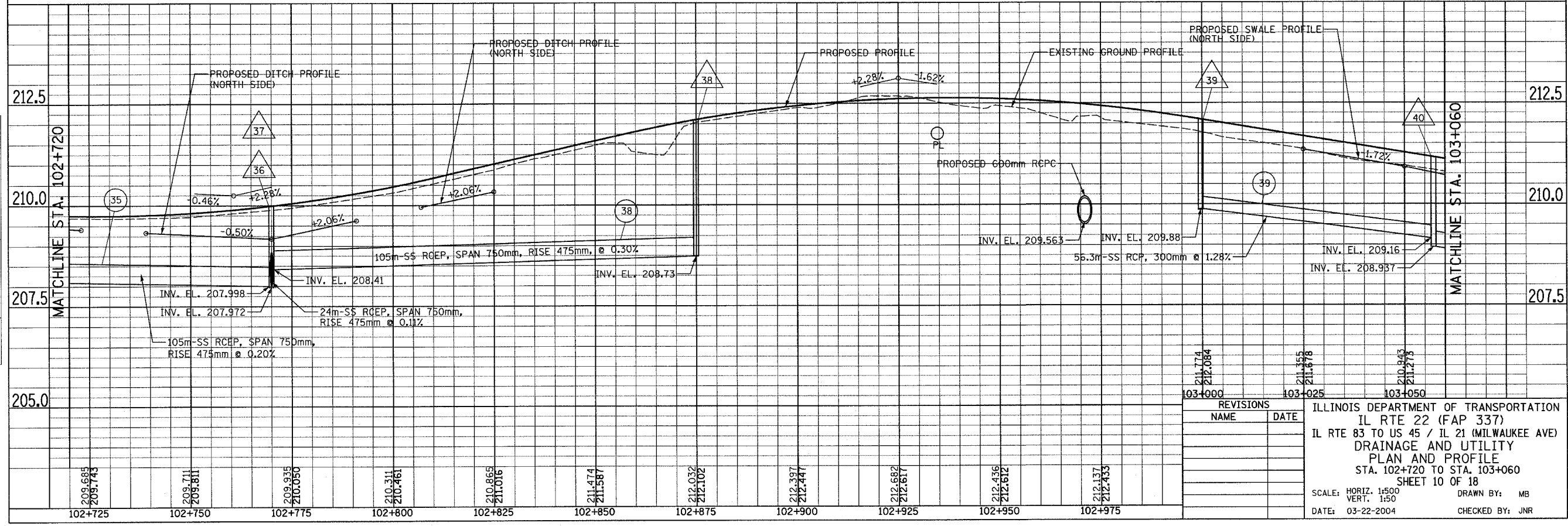


F.A.P. RTE.	SECTION	COUNTY	TOTAL SHEET SHEETS NO.
337	20R-5	LAKE	562 199
STA. 102+720		TO STA. 103+060	
FED. ROAD DIST. NO.		ILLINOIS	FED. AID PROJECT
D-91-552-99		60881	

BY	DATE
FINAL SURVEY PLOTTED	
NOTE BOOK TEMPLATE AREAS CHECKED	
NO.	



BY	DATE
ORIGINAL SURVEY PLOTTED	
NOTE BOOK TEMPLATE AREAS CHECKED	
NO.	



REVISIONS	
NAME	DATE

ILLINOIS DEPARTMENT OF TRANSPORTATION
 IL RTE 22 (FAP 337)
 IL RTE 83 TO US 45 / IL 21 (MILWAUKEE AVE)
 DRAINAGE AND UTILITY
 PLAN AND PROFILE
 STA. 102+720 TO STA. 103+060
 SHEET 10 OF 18

SCALE: HORIZ. 1"=50'
 VERT. 1"=5'
 DATE: 03-22-2004 DRAWN BY: MB
 CHECKED BY: JNR