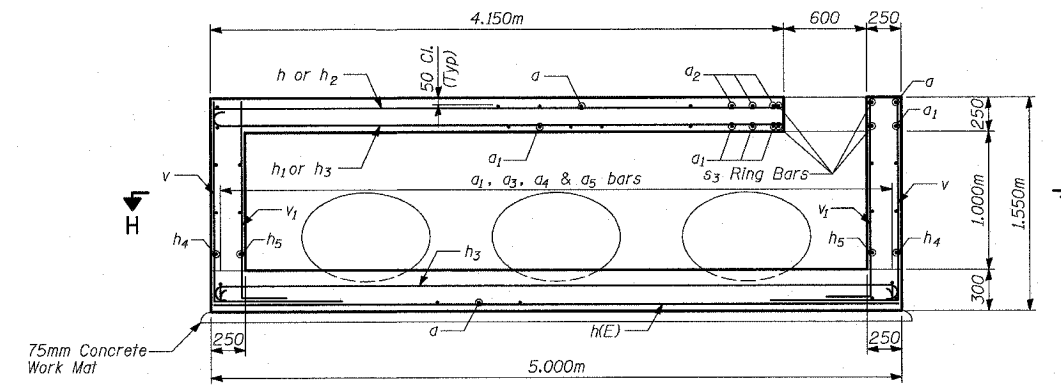
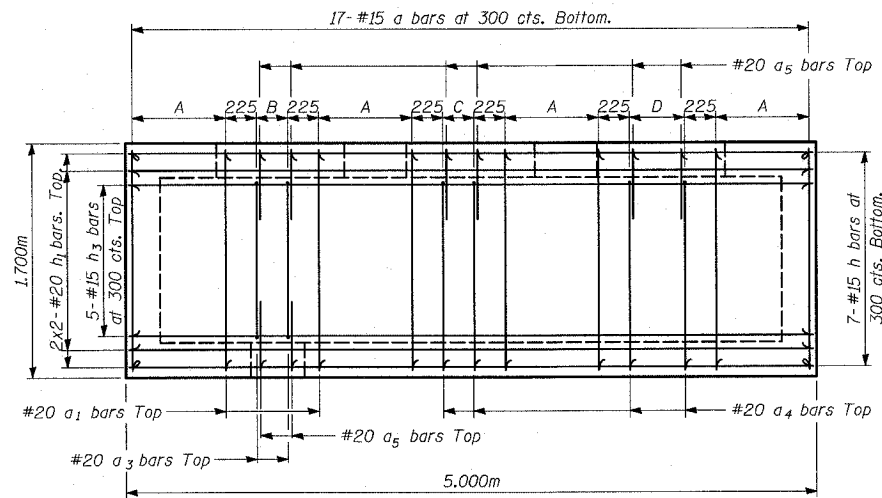
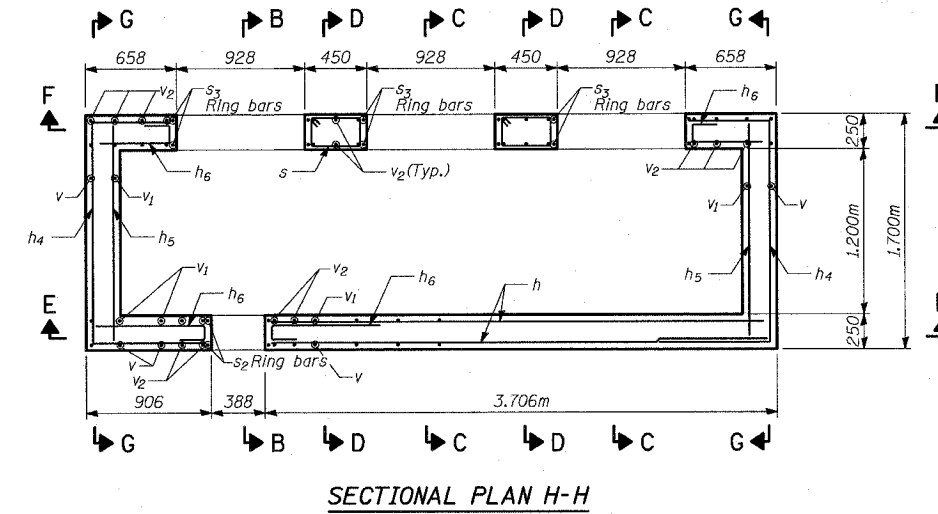
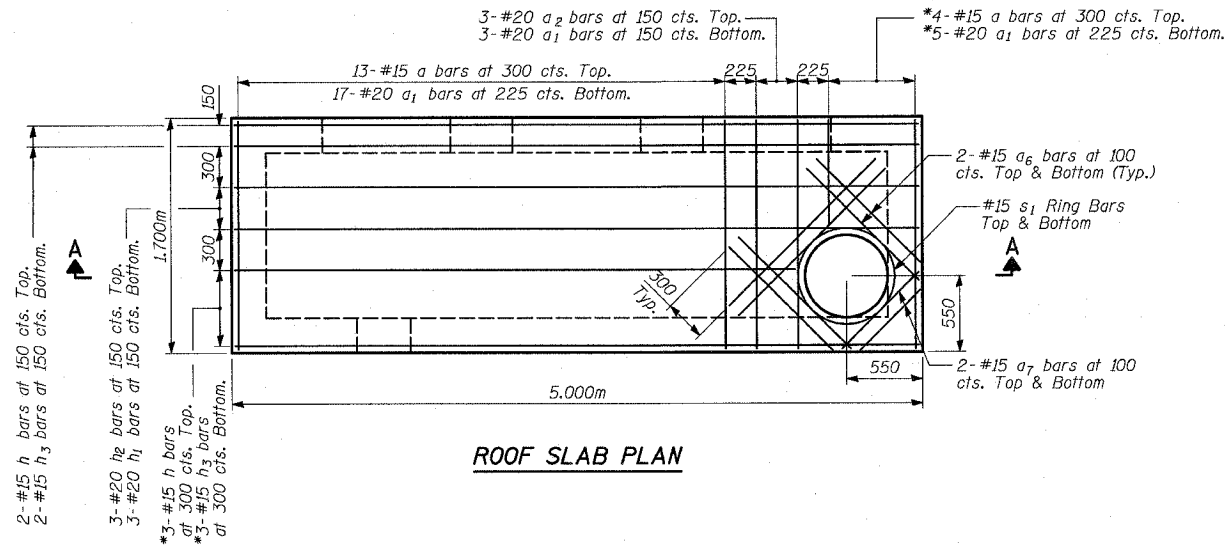


STATE OF ILLINOIS  
DEPARTMENT OF TRANSPORTATION

FAP	SECTION	COUNTY	TOTAL SHEETS	SHEET NO.
337	20R-5	LAKE	562	214
FED. ROAD DIST. NO. 7		ILLINOIS	FED. AID PROJECT	
0-91-552-99		Contract No. 60881		

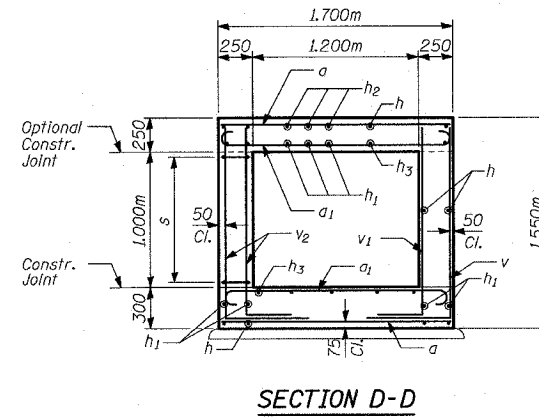
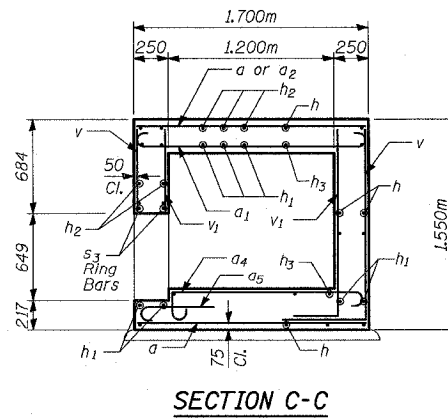
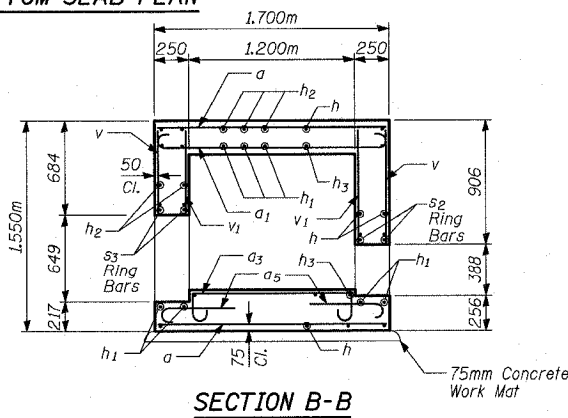
SHEET NO. 2  
3 SHEETS



A	4-#20 $a_1$ bars at 225 cts. Top.
B	2-#20 $a_3$ & 2x2-#20 $a_5$ bars at 225 cts. Top.
C	2-#20 $a_4$ & 2-#20 $a_5$ bars at 225 cts. Top.
D	3-#20 $a_4$ & 3-#20 $a_5$ bars at 200 cts. Top.

TYLIN INTERNATIONAL

DESIGNED	MI, MAF
CHECKED	TD
DRAWN	MAF, BK
CHECKED	TD
DATE	03-22-2004



NOTES:

- Reinforcement bar clearance to be 50mm unless otherwise noted.
- E.F. - denotes Each Face  
E.S. - denotes Each Side  
I.F. - denotes Inside Face  
O.F. - denotes Outside Face
- \* Cut bars to fit in field

DETAILS 1

JUNCTION CHAMBER 1  
STA. 103+408.940  
IL ROUTE 22  
FAP 337 SECTION 20R-5  
IL RTE 83 TO US 45/IL 21  
LAKE COUNTY