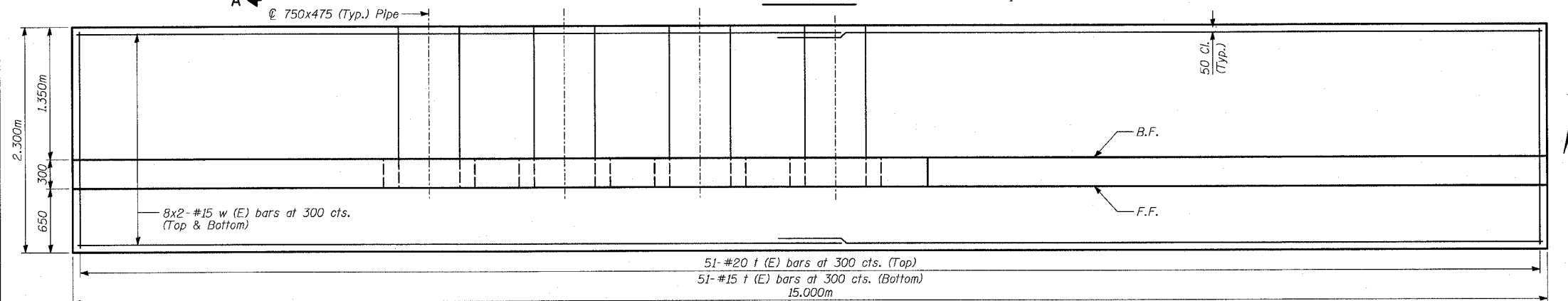
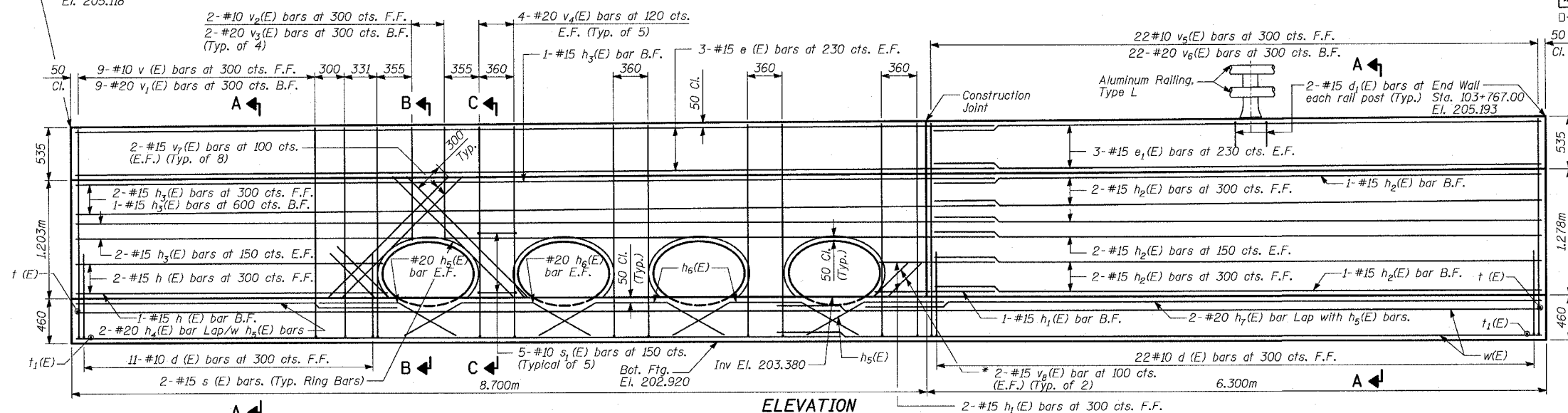


STATE OF ILLINOIS  
DEPARTMENT OF TRANSPORTATION

FAP	SECTION	COUNTY	DATE	SHEET	SHEET NO. 2
337	20R-5	LAKE	562	229	3 SHEETS
FED. ROAD DIST. NO. 7		ILLINOIS FED. AID PROJECT		CONTRACT NO. 60881	
0-91-552-99		Contract No. 60881			



**BILL OF MATERIAL**

Bar	No.	Size	Length (m)	Shape
d (E)	33	#10	1.03	U
d <sub>1</sub> (E)	8	#15	0.91	U
e (E)	6	#15	9.29	—
e <sub>1</sub> (E)	6	#15	6.25	—
h (E)	3	#15	3.16	—
h <sub>1</sub> (E)	3	#15	1.14	—
h <sub>2</sub> (E)	10	#15	6.25	—
h <sub>3</sub> (E)	7	#15	9.29	—
h <sub>4</sub> (E)	2	#20	3.26	—
h <sub>5</sub> (E)	4	#20	1.48	—
h <sub>6</sub> (E)	6	#20	2.07	—
h <sub>7</sub> (E)	2	#20	6.87	—
s (E)	8	#15	1.96	U
s <sub>1</sub> (E)	25	#10	1.27	U
v (E)	9	#10	1.69	—
v <sub>1</sub> (E)	9	#20	2.39	—
v <sub>2</sub> (E)	8	#10	1.15	—
v <sub>3</sub> (E)	8	#20	1.15	—
v <sub>4</sub> (E)	40	#20	2.42	—
v <sub>5</sub> (E)	22	#10	1.74	—
v <sub>6</sub> (E)	22	#20	2.44	—
v <sub>7</sub> (E)	32	#15	1.67	—
v <sub>8</sub> (E)	8	#15	0.64	—
t (E)	51	#20	2.20	—
t <sub>1</sub> (E)	51	#15	2.20	—
w (E)	32	#15	7.77	—
Protective Coat			SQ M	40
Concrete Structures			CU M	24
Reinforcement Bars, Epoxy Coated			KG	1,950

**NOTES**

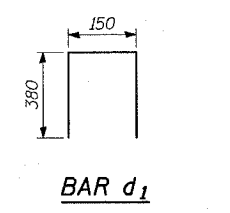
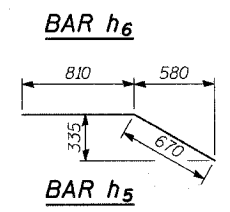
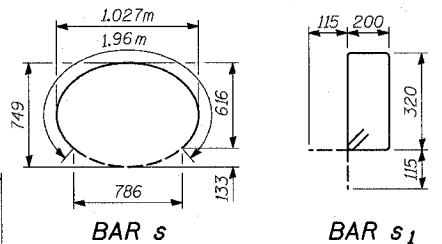
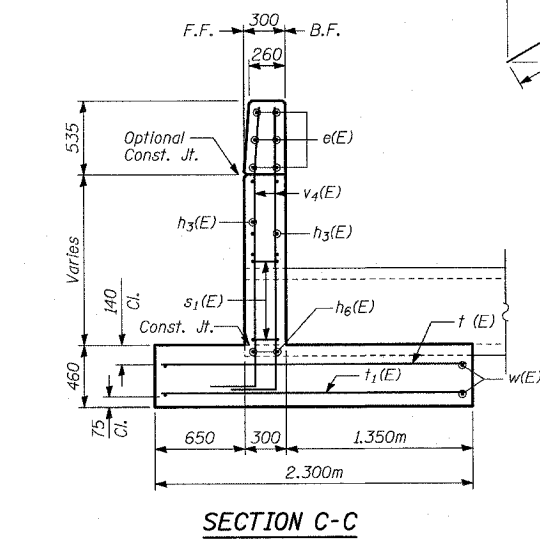
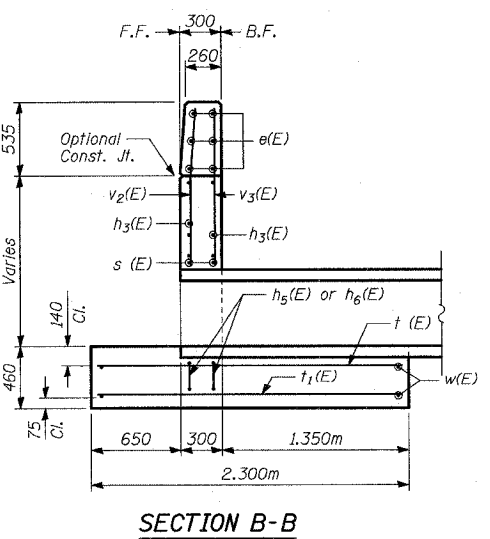
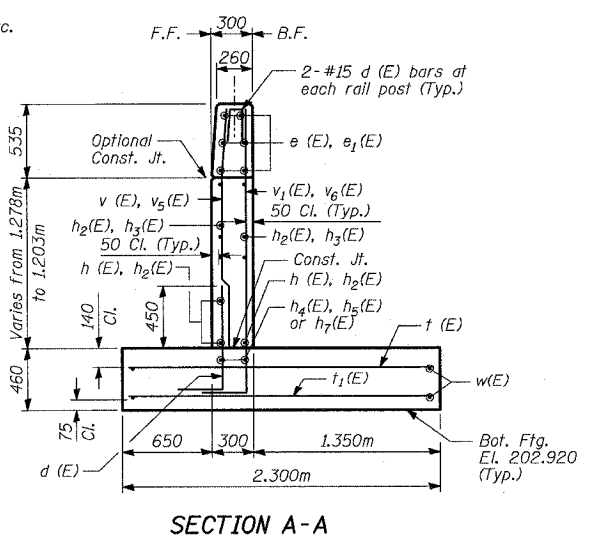
Bars indicated thus, 8 x 2-#15 etc. indicates 8 lines of bars with 2 lengths per line.

B.F. - denotes back face.  
F.F. - denotes front face.  
E.F. - denotes each face.  
E.S. - denotes each side.

\* Cut bars to fit in field.

**TYLIN INTERNATIONAL**

DESIGNED	DJR, TD
CHECKED	MI
DRAWN	DJR, MAF
CHECKED	MI
DATE	03-22-2004



**MARK TABLE**

Bar	A	B
d (E)	830	200
v <sub>1</sub> (E)	2070	320
v <sub>4</sub> (E)	2100	320
v <sub>6</sub> (E)	2120	320

**BARS d (E), v<sub>1</sub>(E), v<sub>4</sub>(E) & v<sub>6</sub>(E)**

**DETAILS**

HEADWALL  
STA. 103+782.0 TO STA. 103+767.0  
IL ROUTE 22  
FAP 337 SECTION 20R-5  
IL RTE 83 TO US 45/IL 21  
LAKE COUNTY