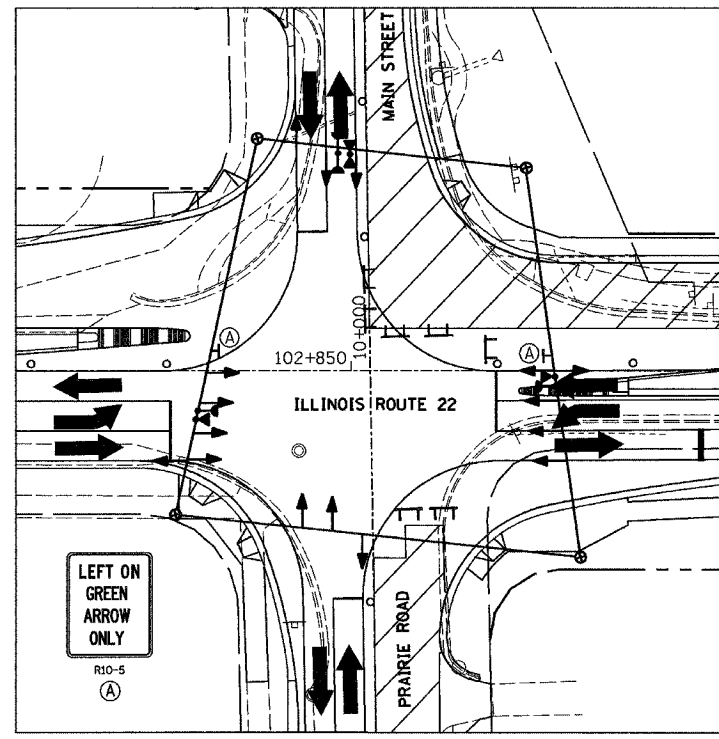
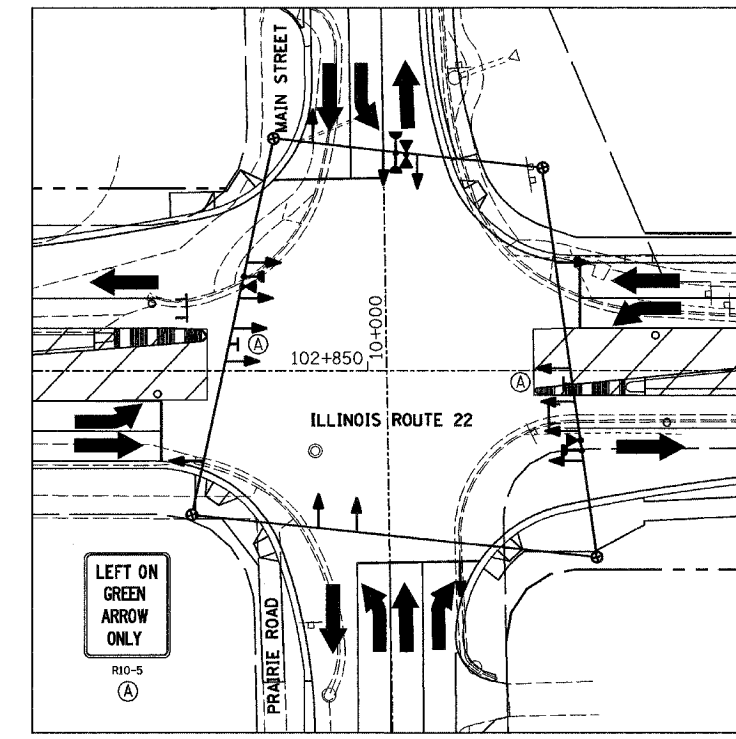


F.A.P. RTE.	SECTION	COUNTY	TOTAL SHEETS	SHEET NO.
337	20R-5	LAKE	562	355
STA.		TO STA.		
FED. ROAD DIST. NO.		ILLINOIS	FED. AID PROJECT	
D-91-552-99		60881		

FINAL SURVEY	BY	DATE
SURVEYED		
PLOTTED		
NOTE BOOK		
TEMP. PLATE		
AREAS CHECKED		
NO.		

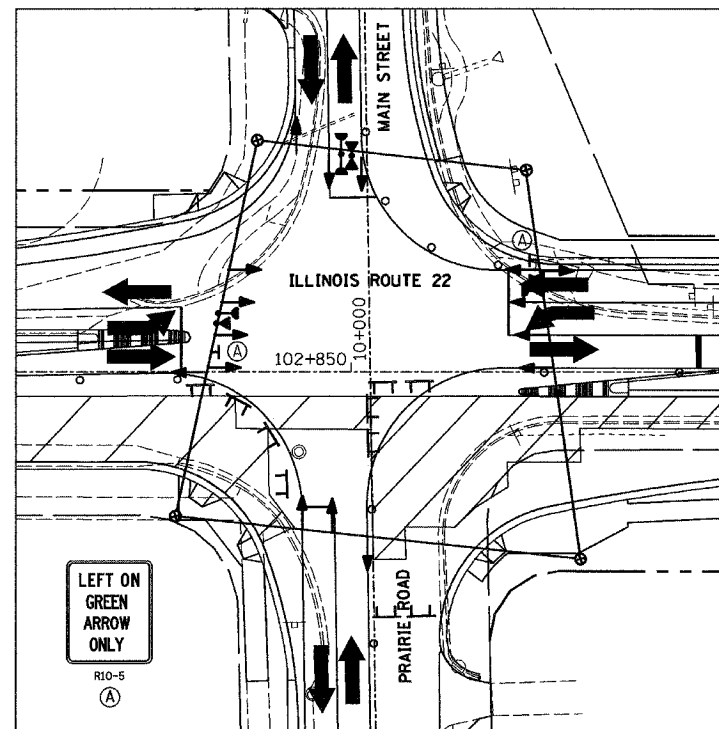


STAGE 1A

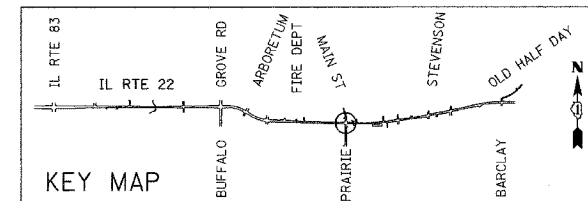


STAGE 3

ORIGINAL SURVEY	BY	DATE
SURVEYED		
PLOTTED		
NOTE BOOK		
TEMP. PLATE		
AREAS CHECKED		
NO.		



STAGE 2



REVISIONS	
NAME	DATE

ILLINOIS DEPARTMENT OF TRANSPORTATION
 IL RTE 22 (FAP 337)
 IL RTE 83 TO US 45 / IL 21 (MILWAUKEE AVE)
 TEMPORARY TRAFFIC SIGNAL
 INSTALLATION AND REMOVE EXISTING
 TRAFFIC SIGNAL EQUIP. (STAGES 1A,2&3)
 ILLINOIS ROUTE 22 AT PRAIRIE ROAD
 SCALE: 1:400
 DATE: 03-22-2004
 DRAWN BY: AMB
 DESIGNED BY: AMB
 CHECKED BY: JPS