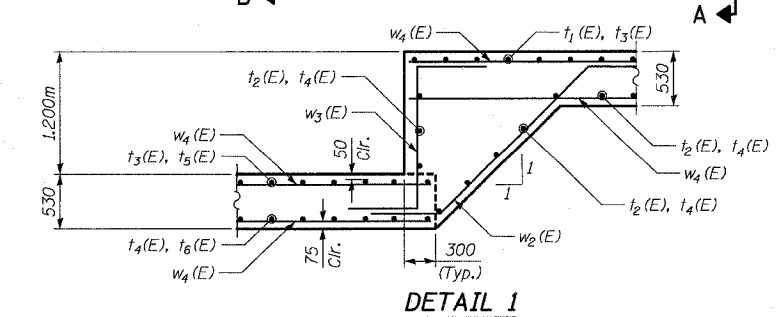
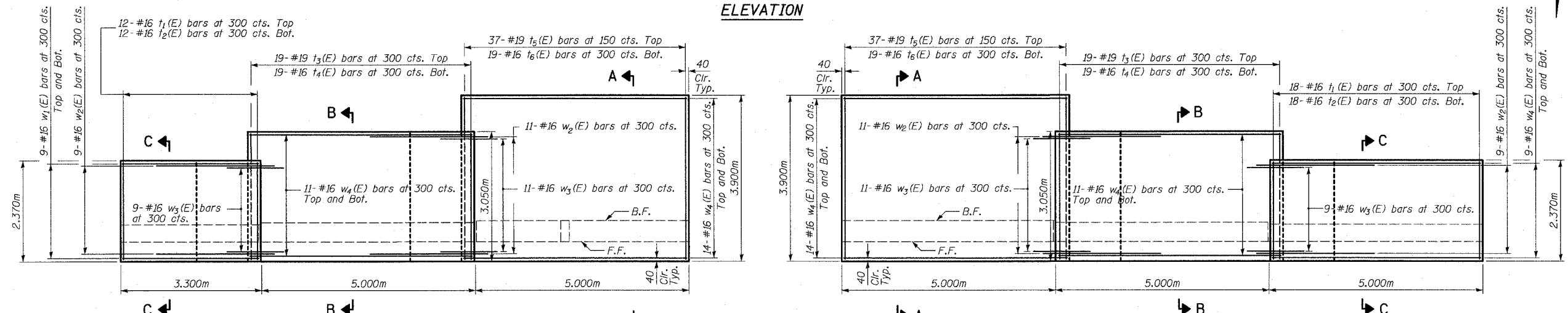
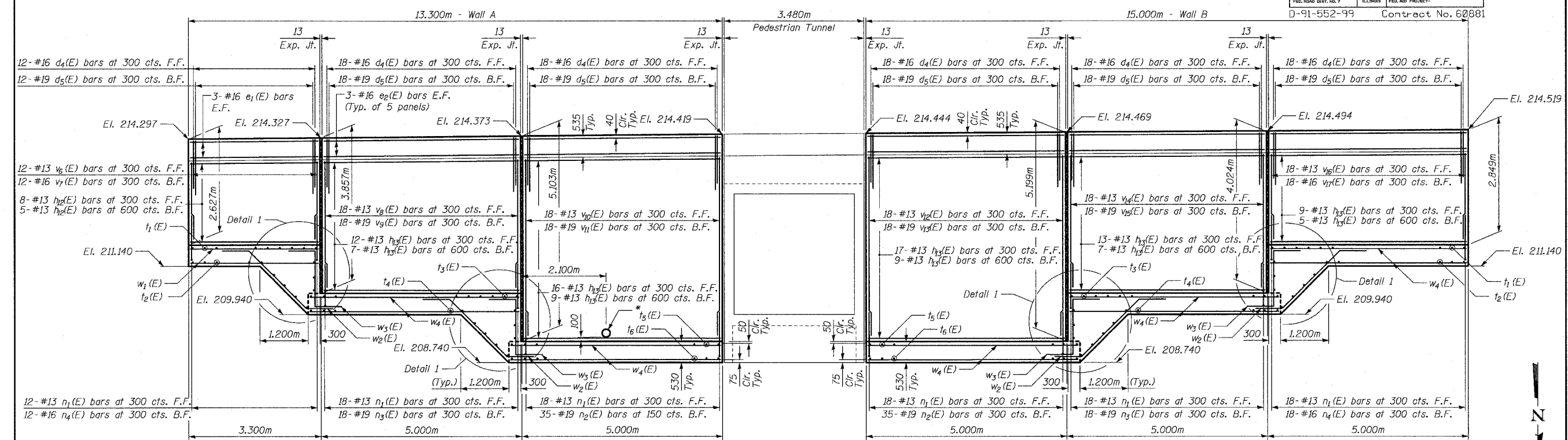


STATE OF ILLINOIS
DEPARTMENT OF TRANSPORTATION

FAP	SECTION	COUNTY	SHEET	SHEET NO.
337	20R-5	LAKE	562	420
FED. ROAD DIST. NO. 7				ILLINOIS FED. AID PROJECT-
D-91-552-99				Contract No. 60881



PLAN

NOTES

- For tunnel reinforcement, see sheet 4 of 13.
 - For parapet reinforcement and details, see sheet 8 & 9 of 13.
 - For expansion joint details, see sheet 9 of 13.
 - Reinforcement bars designated (E) shall be epoxy coated.
 - All construction joints shall be bonded.
- * Sleeve for Pipe Underdrains 250mmφ (Special).

LEGEND

- F.F. Denotes Front Face.
- B.F. Denotes Back Face.
- E.F. Denotes Each Face

RETAINING WALL PLAN AND ELEVATION

IL ROUTE 22 OVER
PEDESTRIAN TUNNEL
FAP 337 SECTION 20R-5
LAKE COUNTY
STA. 100+775.000
S.N. 049-T016

TYLIN INTERNATIONAL

DESIGNED	DJR
CHECKED	TD
DRAWN	DJR, TB
CHECKED	TD, MI

DATE 03-22-2004