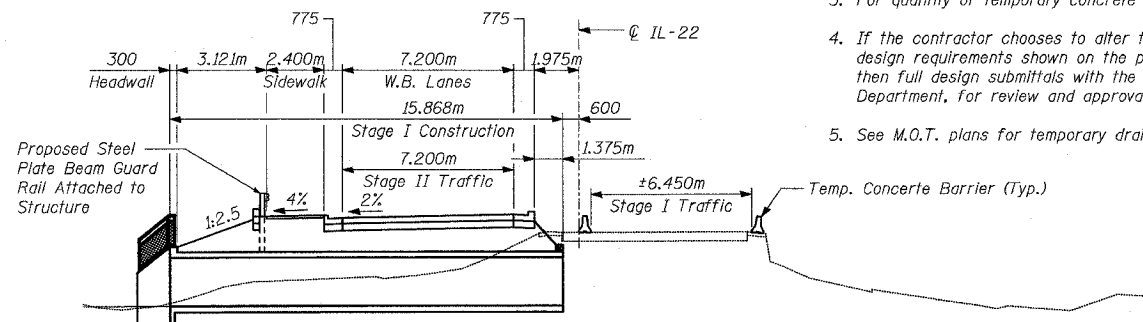


STATE OF ILLINOIS
DEPARTMENT OF TRANSPORTATION

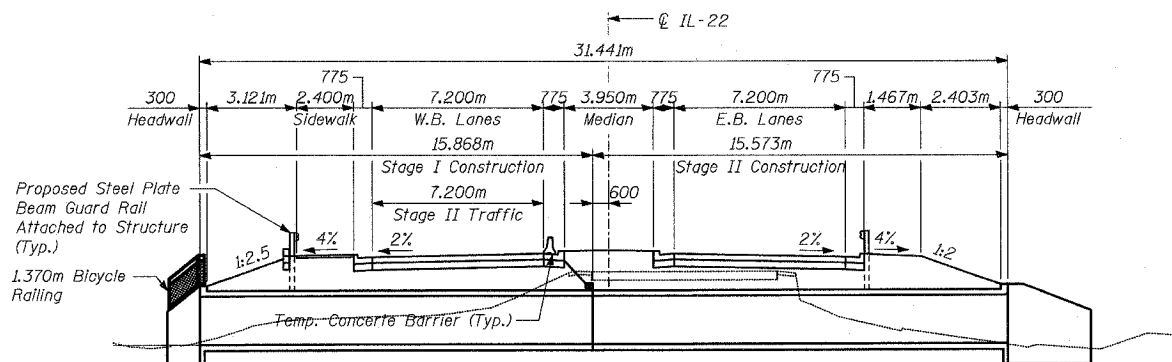
NOTES:

1. Hatched area indicates Removal of Existing Structures No. 2.
2. For details of temporary concrete barrier, see Standard 704001.
3. For quantity of temporary concrete barrier, see roadway plans.
4. If the contractor chooses to alter the temporary cantilevered sheet piling design requirements shown on the plans for lesser design requirements, then full design submittals with the required seals will be expected by the Department, for review and approval.
5. See M.O.T. plans for temporary drainage.



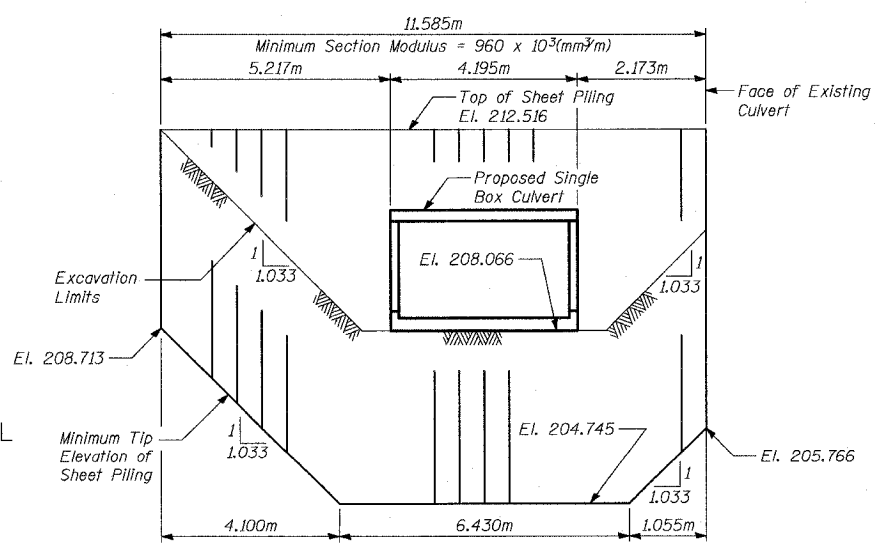
STAGE I CONSTRUCTION

(Dimensions shown are at right angle to CL roadway)



STAGE II CONSTRUCTION

(Dimensions shown are at right angle to CL roadway)



TEMPORARY SHEET PILING DESIGN

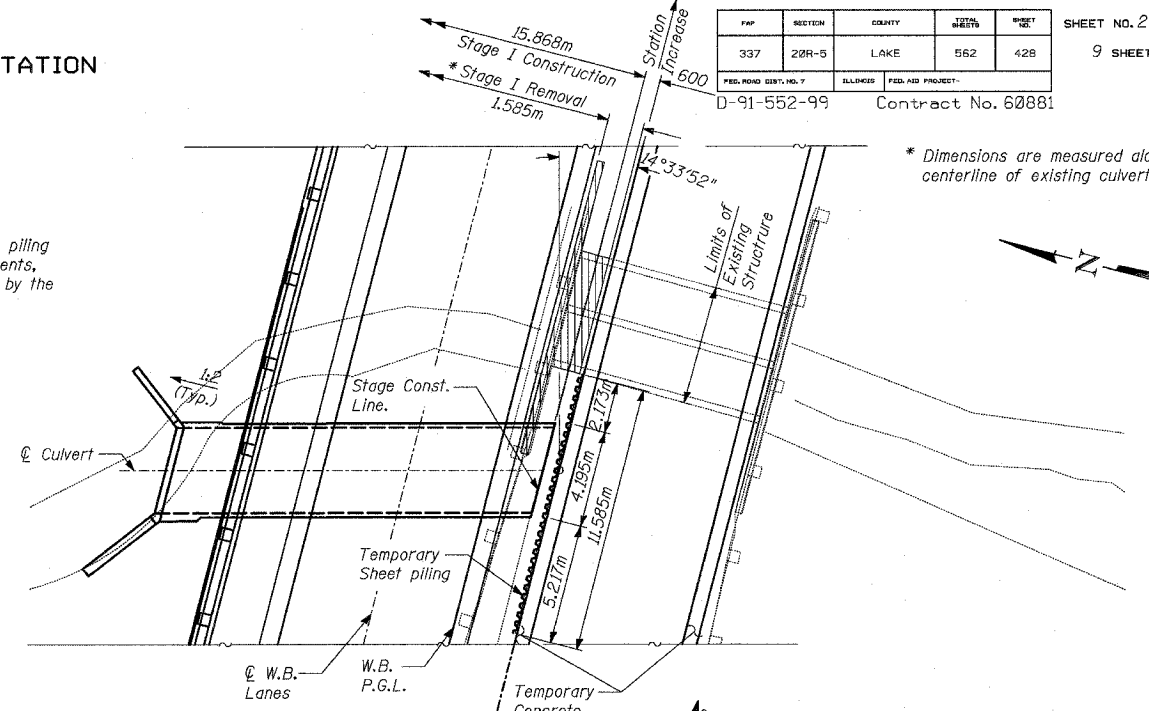
(Slopes and Distances shown along alignment of sheeting for structure with $14^\circ 33' 52''$ skew)

TYLINTERNATIONAL

DESIGNED	MI, MAF
CHECKED	TD
DRAWN	MAF
CHECKED	TD, MI
DATE	03-22-2004

FAP	SECTION	COUNTY	SHEETS	SHEET	SHEET NO. 2
337	20R-5	LAKE	552	428	9 SHEETS
FED. ROAD DIST. NO. 7		BLANKS		FED. AID PROJECT	
D-91-552-99		Contract No. 60881			

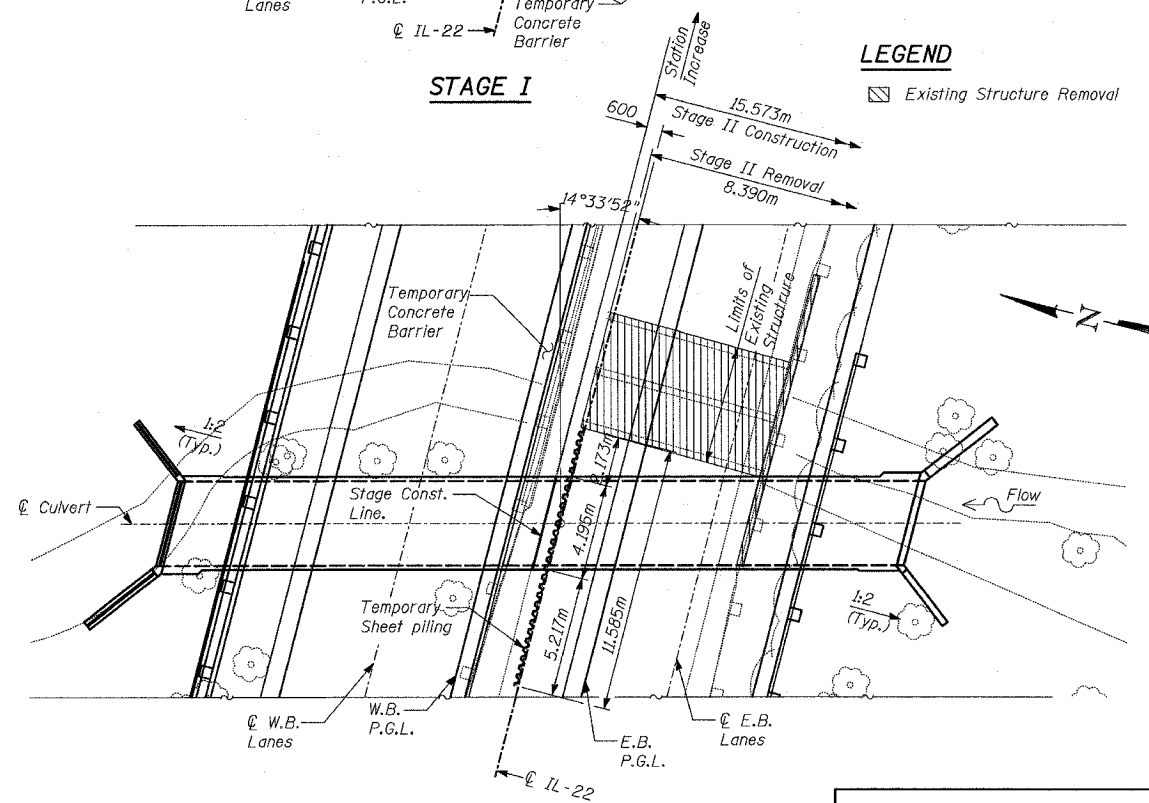
* Dimensions are measured along centerline of existing culvert.



STAGE I

LEGEND

Existing Structure Removal



STAGE II

BILL OF MATERIAL

Item	Unit	TOTAL
Temporary Sheet Piling	SQ M	82
Removal of Existing Structures No. 2	EACH	1

STAGE CONSTRUCTION

IL ROUTE 22 OVER
KILDEER CREEK
FAP 337 SECTION 20R-5
LAKE COUNTY
STA. 100+978.642
S.N. 049-C003