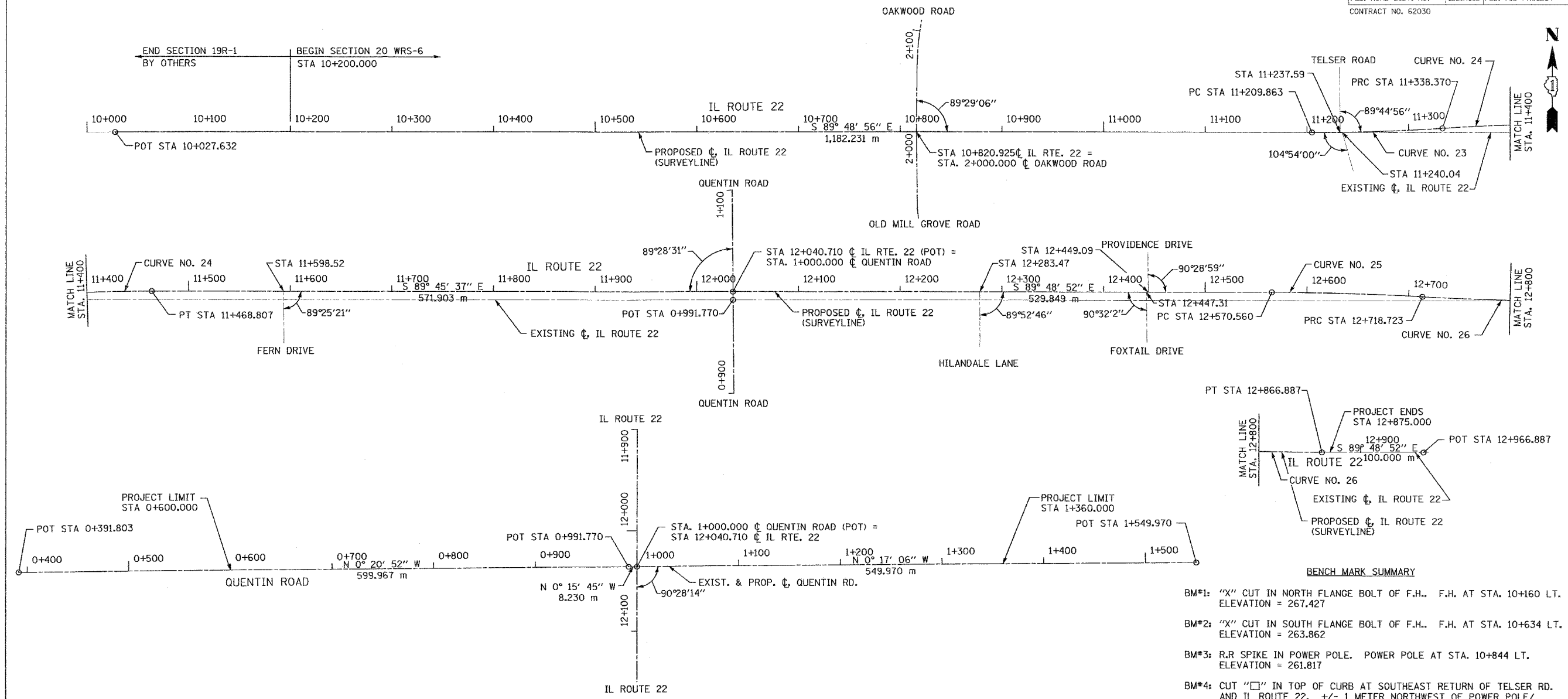


F.A.P. RTE.	SECTION	COUNTY	TOTAL SHEETS	SHEET NO.
337	20 WRS-6	LAKE	318	26
STA.	TO STA.			
FED. ROAD DIST. NO.	ILLINOIS FED. AID PROJECT			
CONTRACT NO. 62030				



NOTE:
SEE SHEET NO. 143 FOR CENTERLINE TIES
(TIES PROVIDED ARE GROUND VALUES)

CURVE NO.	Δ	R	T	L	E	SE	P.O.T./PI STATION	P.O.T./PI COORDINATE		PC STATION	P.C. COORDINATES		PT STATION	P.T. COORDINATES	
								NORTH	EAST		NORTH	EAST		NORTH	EAST
IL ROUTE 22							10+027.632	614,066.539	320,733.067						
23	3°40'53"	2,000.000 m	64.276 m	128.507 m	1.033 m	N.C.	11+274.139	614,062.528	321,979.568	11+209.863	614,062.735	321,915.293	11+338.370	614,066.449	322,043.724
24	3°44'12"	2,000.000 m	65.242 m	130.437 m	1.064 m	N.C.	11+403.612	614,070.428	322,108.844	11+338.370	614,066.449	322,043.724	11+468.807	614,070.155	322,174.085
							12+040.710	614,067.763	322,745.983						
25	3°11'00"	2,666.682 m	74.101 m	148.164 m	1.029 m	N.C.	12+644.660	614,065.807	323,349.930	12+570.560	614,066.047	323,275.830	12+718.723	614,061.453	323,423.903
26	3°11'00"	2,666.682 m	74.101 m	148.164 m	1.029 m	N.C.	12+797.824	614,057.098	323,497.876	12+718.723	614,061.453	323,423.903	12+866.887	614,056.858	323,571.976
QUENTIN RD.							0+391.803	613,459.577	322,749.664						
							0+991.770	614,059.533	322,746.021						
							1+000.000	614,067.763	322,745.983						
							1+549.970	614,617.726	322,743.247						

- BENCH MARK SUMMARY**
- BM*1: "X" CUT IN NORTH FLANGE BOLT OF F.H.. F.H. AT STA. 10+160 LT. ELEVATION = 267.427
 - BM*2: "X" CUT IN SOUTH FLANGE BOLT OF F.H.. F.H. AT STA. 10+634 LT. ELEVATION = 263.862
 - BM*3: R.R SPIKE IN POWER POLE. POWER POLE AT STA. 10+844 LT. ELEVATION = 261.817
 - BM*4: CUT "□" IN TOP OF CURB AT SOUTHEAST RETURN OF TELSER RD. AND IL ROUTE 22. +/- 1 METER NORTHWEST OF POWER POLE/ LIGHT POLE. ELEVATION = 258.352
 - BM*5: CUT "□" ON E. SIDE OF HEADWALL. HEADWALL ON S. SIDE OF IL ROUTE 22. ELEVATION = 252.277
 - BM*6: CUT "□" IN NORTH SIDE OF TRAFFIC SIGNAL MAST ARM FOUNDATION AT SOUTHEAST CORNER OF QUENTIN RD. AND IL ROUTE 22. ELEVATION = 249.802
 - BM*7: R.R SPIKE IN SOUTH FACE OF POWER POLE. POWER POLE AT STA. 12+275 LT. ELEVATION = 242.752
 - BM*8: R.R SPIKE IN SOUTH FACE OF POWER POLE. POWER POLE AT STA. 12+525 LT. ELEVATION = 242.749
 - BM*9: R.R SPIKE IN SOUTH FACE OF POWER POLE. POWER POLE AT STA. 12+803 LT. ELEVATION = 236.373

REVISIONS		ILLINOIS DEPARTMENT OF TRANSPORTATION ILLINOIS ROUTE 22
NAME	DATE	
		ALIGNMENT, CURVE DATA AND BENCH MARKS

SCALE 1:2000
DATE: 03/11/05
DRAWN BY: SMP
CHECKED BY: BDH

