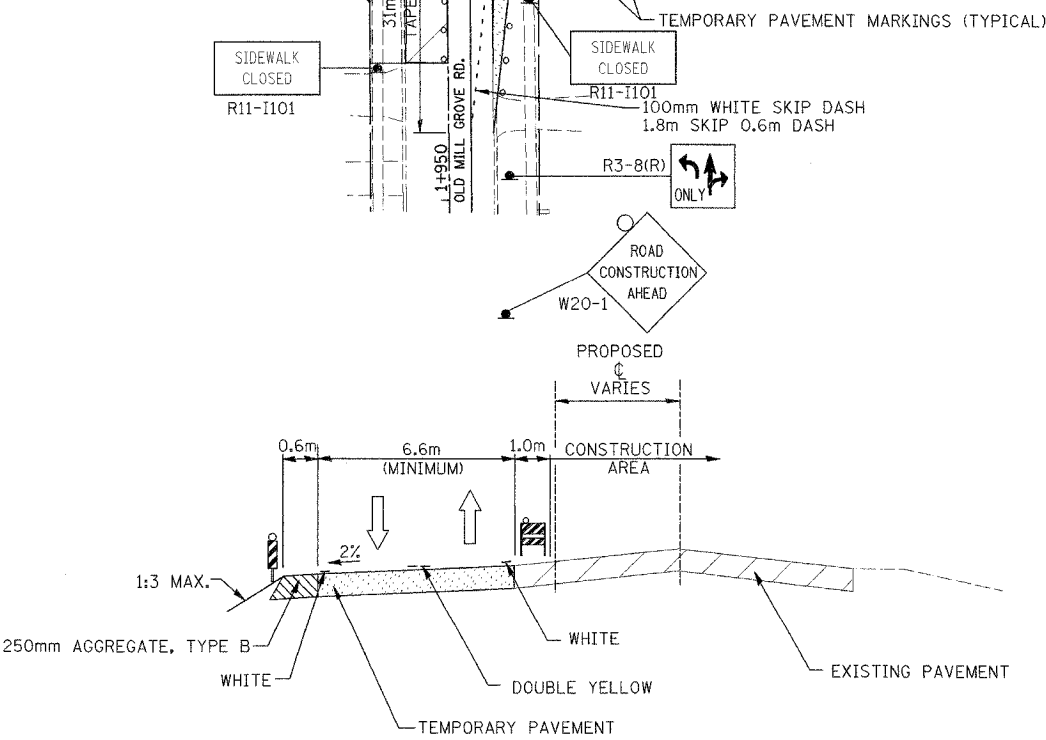
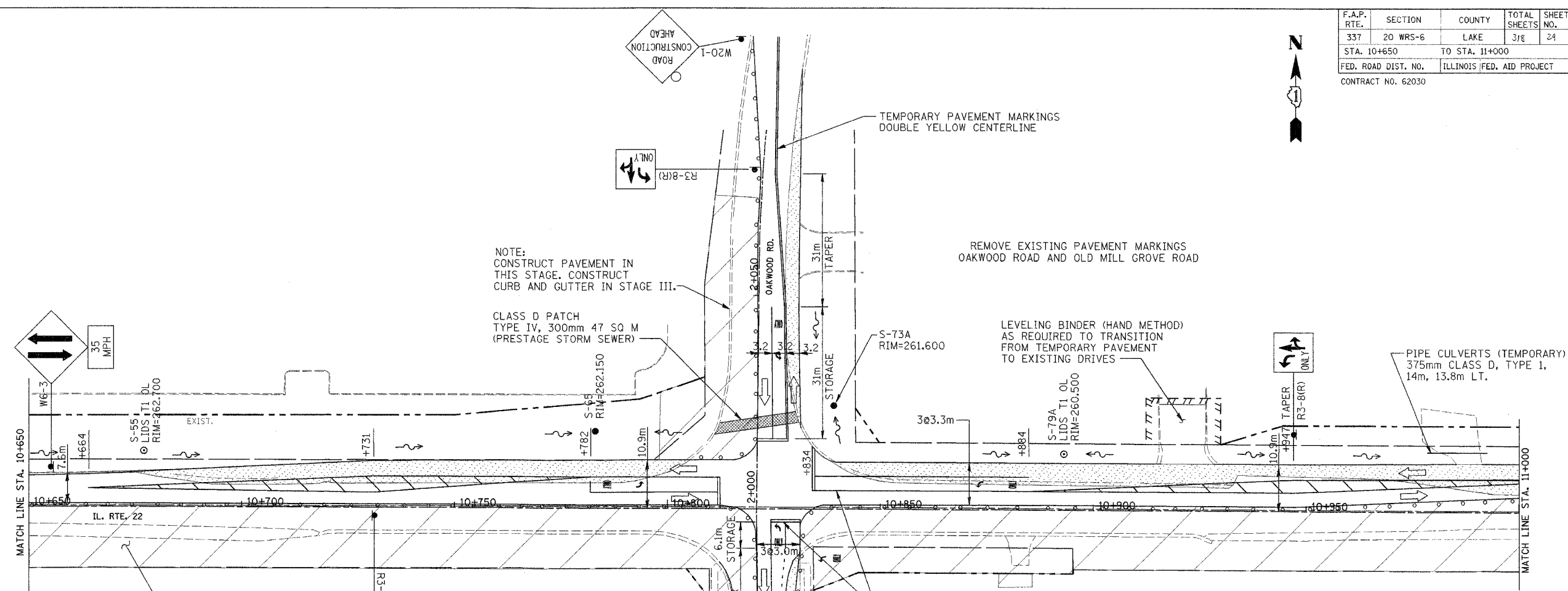


F.A.P. RTE.	SECTION	COUNTY	TOTAL SHEETS	SHEET NO.
337	20 WRS-6	LAKE	318	24
STA. 10+650		TO STA. 11+000		
FED. ROAD DIST. NO.		ILLINOIS FED. AID PROJECT		
CONTRACT NO. 62030				



LEGEND

- CONSTRUCTION AREA
- DIRECTION OF TRAFFIC
- TEMPORARY CONCRETE BARRIER WALL WITH VERTICAL PANELS AND STEADY BURN LIGHTS @ 15m C-C
- TYPE 2 BARRICADES WITH STEADY BURN LIGHTS AT 30m C-C UNLESS OTHERWISE NOTED
- IMPACT ATTENUATOR
- TEMPORARY PAVEMENT
- CONSTRUCTION SIGN
- DRAINAGE STRUCTURE
- TEMPORARY CULVERT
- TEMPORARY SWALE
- ARROW BOARD

REVISIONS	
NAME	DATE

ILLINOIS DEPARTMENT OF TRANSPORTATION
 ILLINOIS ROUTE 22
 MAINTENANCE OF TRAFFIC
 STAGE I
 STA. 10+650 TO STA. 11+000
 SCALE IN METERS
 HORIZ. (1:500) DRAWN BY: SMP
 DATE: 03/11/05 CHECKED BY: SJG

IL 22 STAGE I
 STA. 10+200 TO STA. 11+000