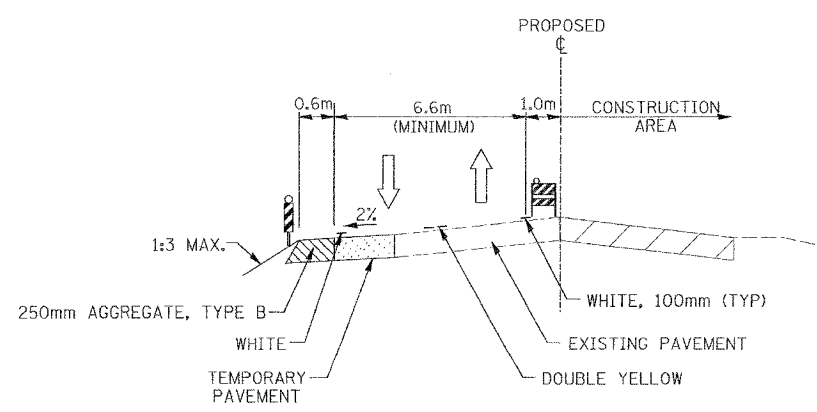
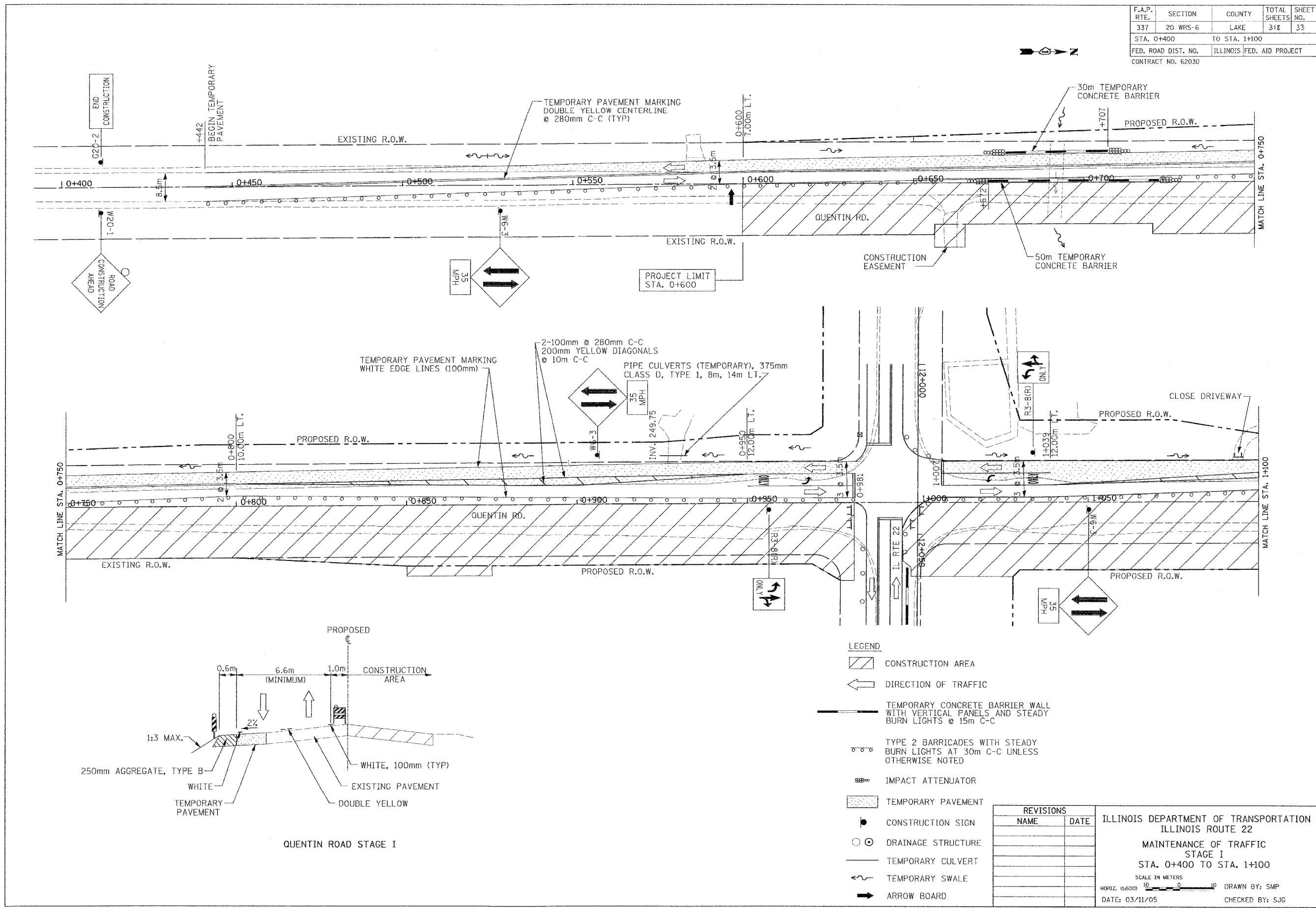


F.A.P. RTE.	SECTION	COUNTY	TOTAL SHEETS	SHEET NO.
337	20 WRS-6	LAKE	318	33
STA. 0+400		TO STA. 1+100		
FED. ROAD DIST. NO.	ILLINOIS FED. AID PROJECT			
CONTRACT NO. 62030				



QUENTIN ROAD STAGE I

- LEGEND**
- CONSTRUCTION AREA
  - DIRECTION OF TRAFFIC
  - TEMPORARY CONCRETE BARRIER WALL WITH VERTICAL PANELS AND STEADY BURN LIGHTS @ 15m C-C
  - TYPE 2 BARRICADES WITH STEADY BURN LIGHTS AT 30m C-C UNLESS OTHERWISE NOTED
  - IMPACT ATTENUATOR
  - TEMPORARY PAVEMENT
  - CONSTRUCTION SIGN
  - DRAINAGE STRUCTURE
  - TEMPORARY CULVERT
  - TEMPORARY SWALE
  - ARROW BOARD

REVISIONS	
NAME	DATE

ILLINOIS DEPARTMENT OF TRANSPORTATION  
ILLINOIS ROUTE 22  
MAINTENANCE OF TRAFFIC  
STAGE I  
STA. 0+400 TO STA. 1+100  
SCALE IN METERS  
HORIZ. (1:500) DRAWN BY: SMP  
DATE: 03/11/05 CHECKED BY: SJG