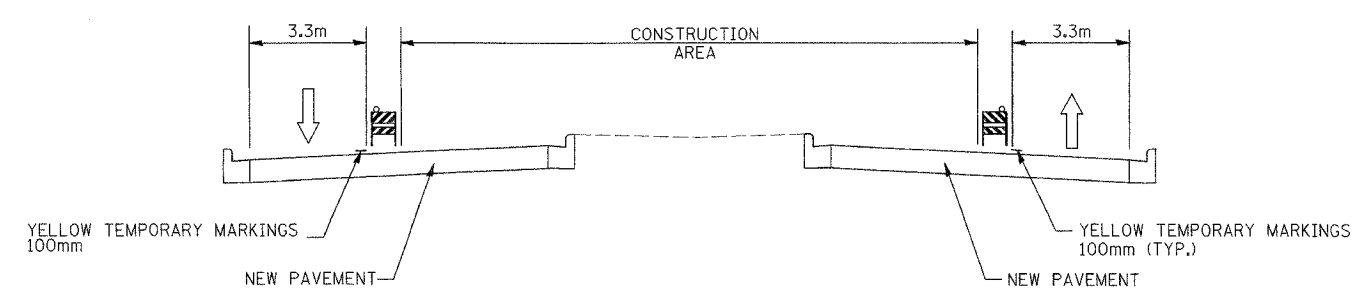
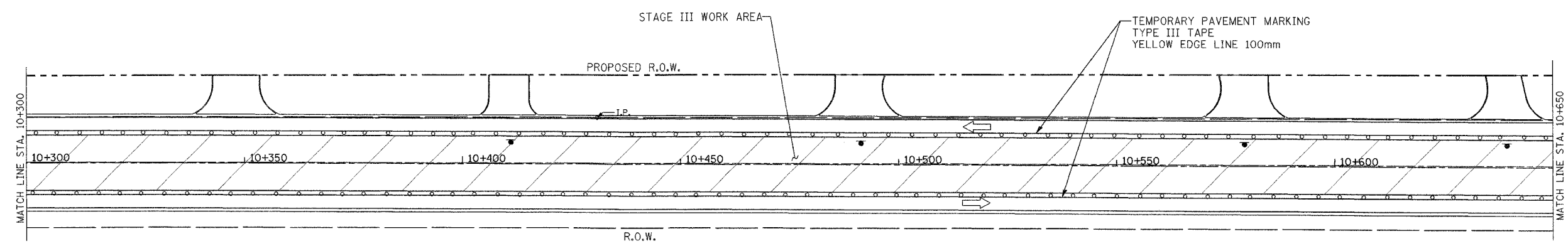
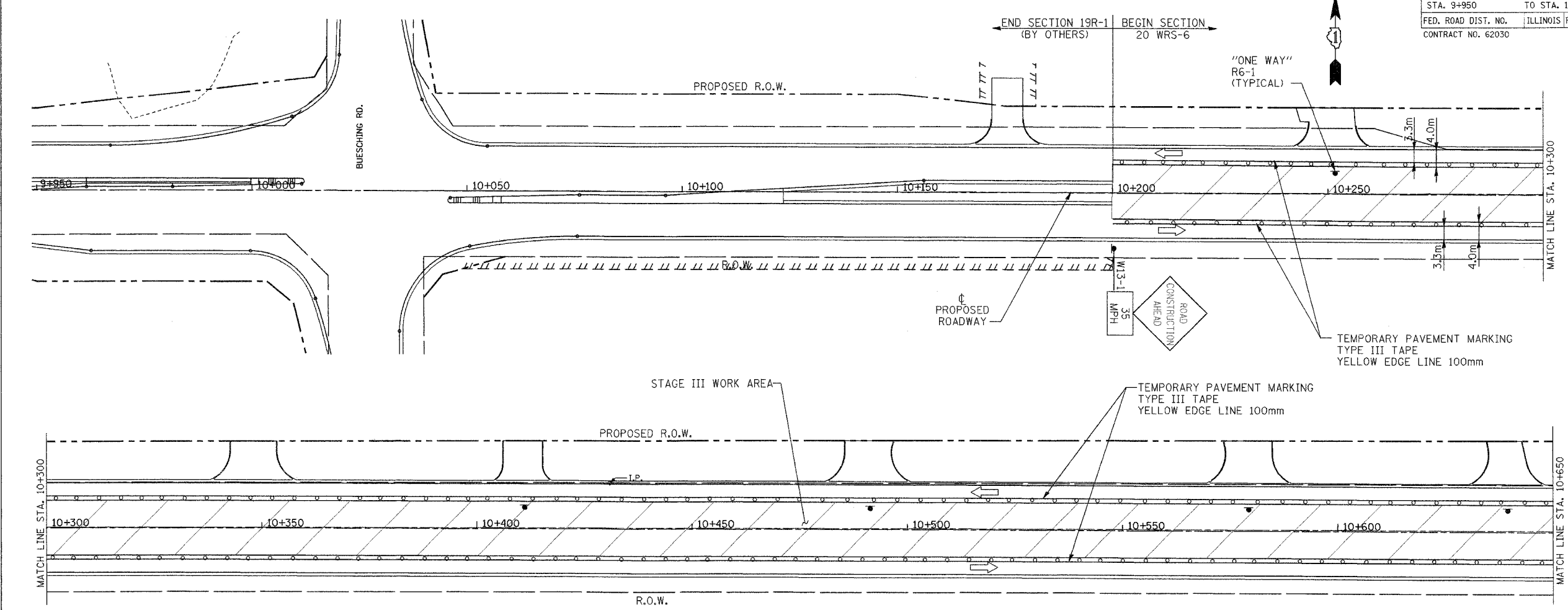


F.A.P. RTE.	SECTION	COUNTY	TOTAL SHEETS	SHEET NO.
337	20 WRS-6	LAKE	318	42
STA. 9+950		TO STA. 10+650		
FED. ROAD DIST. NO.	ILLINOIS FED. AID PROJECT			
CONTRACT NO. 62030				



- LEGEND**
- CONSTRUCTION AREA
  - DIRECTION OF TRAFFIC
  - TEMPORARY CONCRETE BARRIER WALL WITH VERTICAL PANELS AND STEADY BURN LIGHTS @ 15m C-C
  - TYPE 2 BARRICADES WITH STEADY BURN LIGHTS AT 30m C-C UNLESS OTHERWISE NOTED
  - IMPACT ATTENUATOR
  - TEMPORARY PAVEMENT
  - CONSTRUCTION SIGN
  - DRAINAGE STRUCTURE
  - TEMPORARY CULVERT
  - TEMPORARY SWALE
  - ARROW BOARD

IL 22 STAGE III  
STA. 10+200 TO STA. 12+450

REVISIONS		ILLINOIS DEPARTMENT OF TRANSPORTATION ILLINOIS ROUTE 22 MAINTENANCE OF TRAFFIC STAGE III STA. 9+950 TO STA. 10+650
NAME	DATE	
		SCALE IN METERS HORIZ. (1:500)  DRAWN BY: SMP DATE: 03/11/05 CHECKED BY: SJG