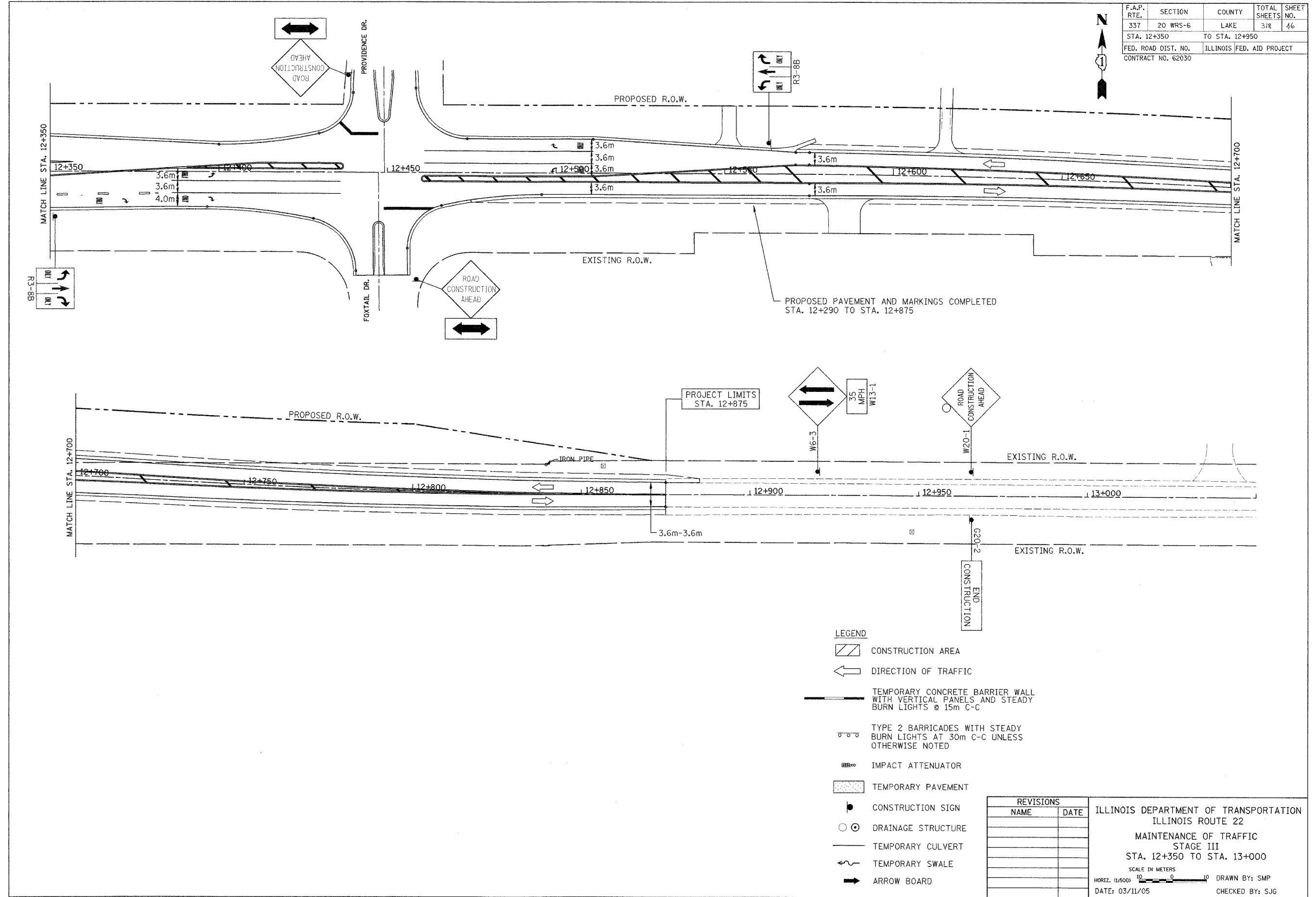


F.A.P. RTE.	SECTION	COUNTY	TOTAL SHEETS	SHEET NO.
337	20 WRS-6	LAKE	3/8	46
STA. 12+350		TO STA. 12+950		
FED. ROAD DIST. NO.		ILLINOIS FED. AID PROJECT		
CONTRACT NO. 62030				



- LEGEND**
- CONSTRUCTION AREA
  - DIRECTION OF TRAFFIC
  - TEMPORARY CONCRETE BARRIER WALL WITH VERTICAL PANELS AND STEADY BURN LIGHTS @ 15m C-C
  - TYPE 2 BARRICADES WITH STEADY BURN LIGHTS AT 30m C-C UNLESS OTHERWISE NOTED
  - IMPACT ATTENUATOR
  - TEMPORARY PAVEMENT
  - CONSTRUCTION SIGN
  - DRAINAGE STRUCTURE
  - TEMPORARY CULVERT
  - TEMPORARY SWALE
  - ARROW BOARD

REVISIONS	
NAME	DATE

ILLINOIS DEPARTMENT OF TRANSPORTATION  
 ILLINOIS ROUTE 22  
 MAINTENANCE OF TRAFFIC  
 STAGE III  
 STA. 12+350 TO STA. 13+000  
 SCALE IN METERS  
 HORIZ. (1:500) DRAWN BY: SMP  
 DATE: 03/11/05 CHECKED BY: SJG