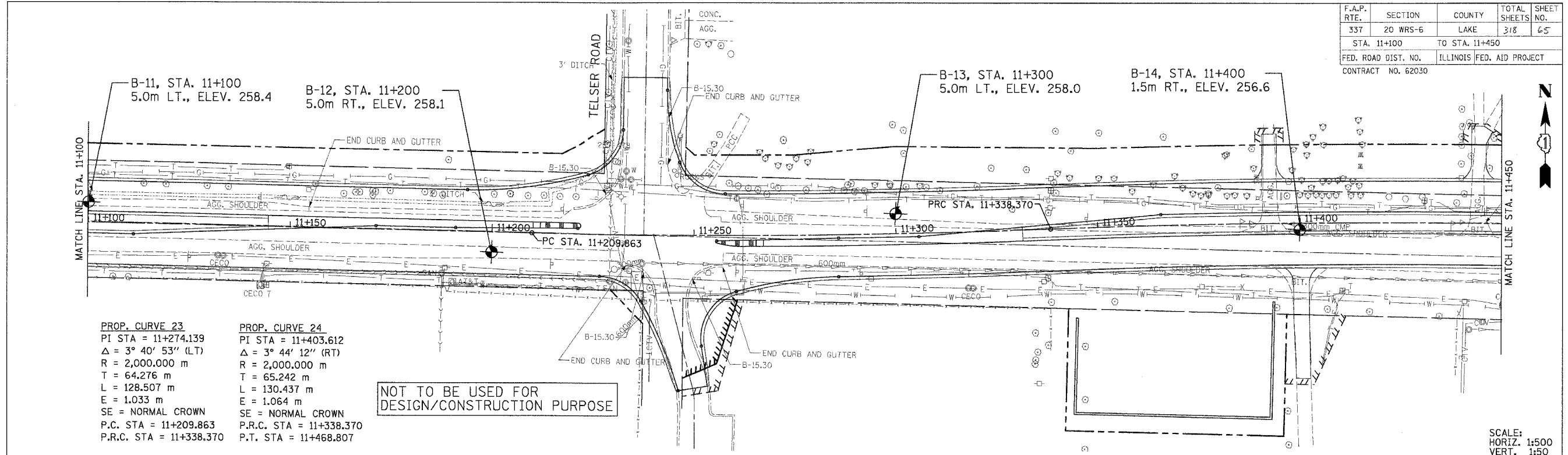


F.A.P. RTE.	SECTION	COUNTY	TOTAL SHEETS	SHEET NO.
337	20 WRS-6	LAKE	318	65
STA. 11+100		TO STA. 11+450		
FED. ROAD DIST. NO.		ILLINOIS FED. AID PROJECT		
CONTRACT NO. 62030				



PROP. CURVE 23
 PI STA = 11+274.139
 $\Delta = 3^\circ 40' 53''$ (LT)
 R = 2,000.000 m
 T = 64.276 m
 L = 128.507 m
 E = 1.033 m
 SE = NORMAL CROWN
 P.C. STA = 11+209.863
 P.R.C. STA = 11+338.370

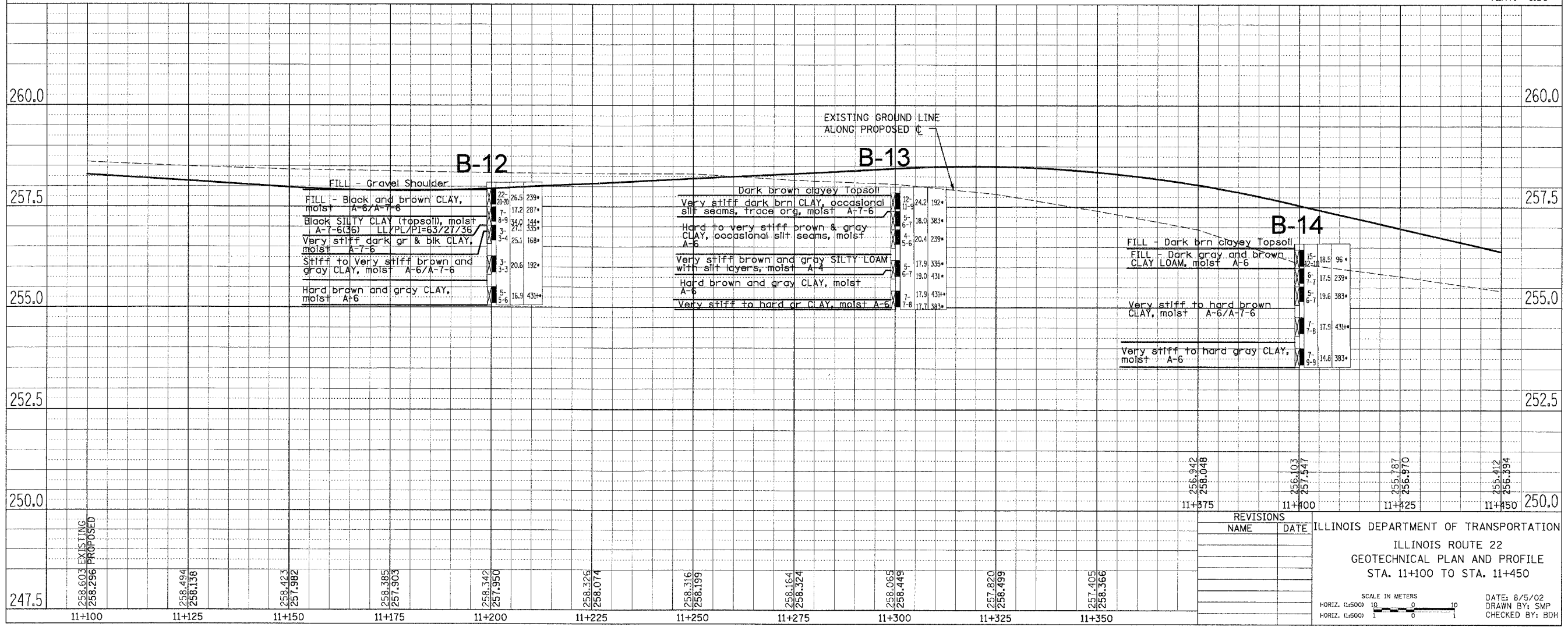
PROP. CURVE 24
 PI STA = 11+403.612
 $\Delta = 3^\circ 44' 12''$ (RT)
 R = 2,000.000 m
 T = 65.242 m
 L = 130.437 m
 E = 1.064 m
 SE = NORMAL CROWN
 P.R.C. STA = 11+338.370
 P.T. STA = 11+468.807

NOT TO BE USED FOR DESIGN/CONSTRUCTION PURPOSE

SCALE:
 HORIZ. 1:500
 VERT. 1:50

FINAL SURVEY	SURVEYED	DATE
NO.	NO.	
NOTE BOOK TEMPLATE AREAS CHECKED		

ORIGINAL SURVEY	SURVEYED	DATE
NO.	NO.	
NOTE BOOK TEMPLATE AREAS CHECKED		



REVISIONS	
NAME	DATE

ILLINOIS DEPARTMENT OF TRANSPORTATION

ILLINOIS ROUTE 22
 GEOTECHNICAL PLAN AND PROFILE
 STA. 11+100 TO STA. 11+450

SCALE IN METERS
 HORIZ. (1:500) 0 10
 HORIZ. (1:500) 0 10

DATE: 8/5/02
 DRAWN BY: SMP
 CHECKED BY: BDH