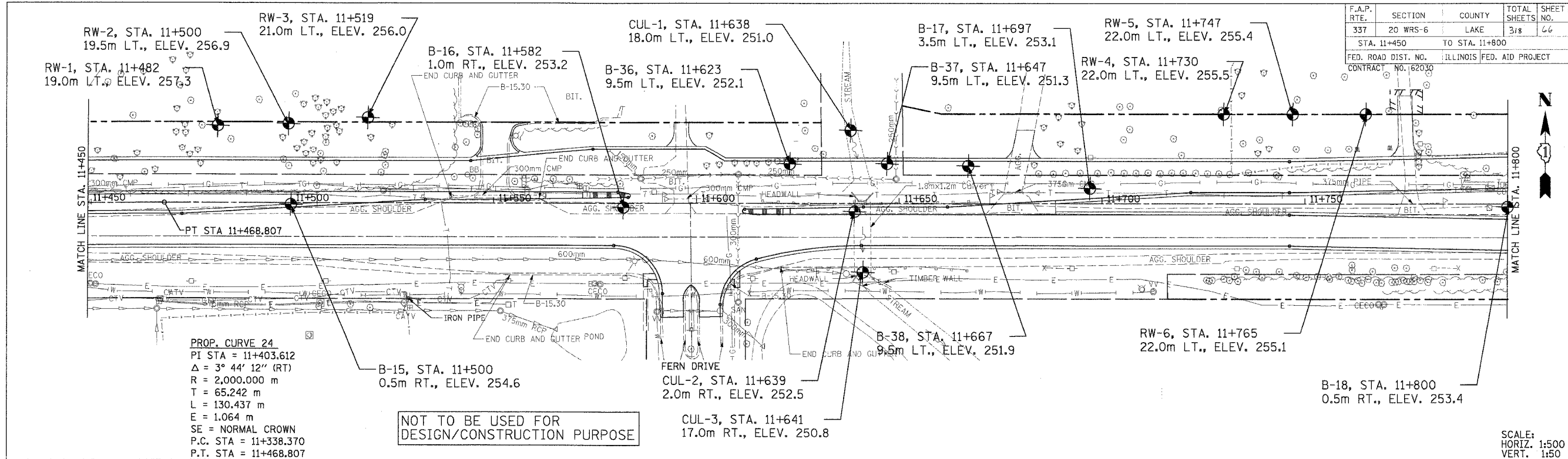


DATE	BY
SURVEYED	
PLOTTED	
NOTE BOOK TEMPLATE	
AREAS CHECKED	
NO.	

DATE	BY
SURVEYED	
PLOTTED	
NOTE BOOK TEMPLATE	
AREAS CHECKED	
NO.	

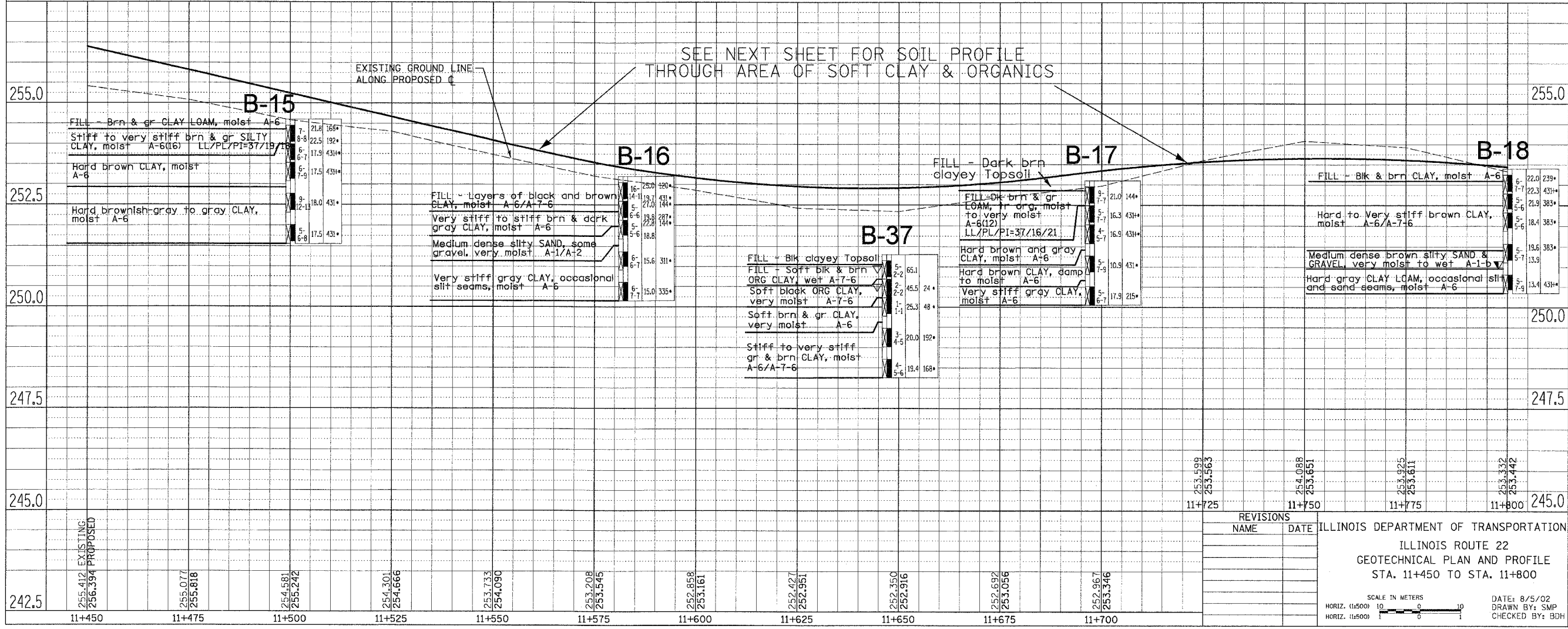


PROP. CURVE 24
 PI STA = 11+403.612
 Δ = 3° 44' 12" (RT)
 R = 2,000.000 m
 T = 65.242 m
 L = 130.437 m
 E = 1.064 m
 SE = NORMAL CROWN
 P.C. STA = 11+338.370
 P.T. STA = 11+468.807

NOT TO BE USED FOR
 DESIGN/CONSTRUCTION PURPOSE

F.A.P. RTE.	SECTION	COUNTY	TOTAL SHEETS	SHEET NO.
337	20 WRS-6	LAKE	318	66
STA. 11+450		TO STA. 11+800		
FED. ROAD DIST. NO.		ILLINOIS FED. AID PROJECT		
CONTRACT NO. 62030				

SCALE:
 HORIZ. 1:500
 VERT. 1:50



REVISIONS	
NAME	DATE

ILLINOIS DEPARTMENT OF TRANSPORTATION
 ILLINOIS ROUTE 22
 GEOTECHNICAL PLAN AND PROFILE
 STA. 11+450 TO STA. 11+800

SCALE IN METERS
 HORIZ. (1:500) 0 10
 HORIZ. (1:500) 0 10

DATE: 8/5/02
 DRAWN BY: SMP
 CHECKED BY: BDH