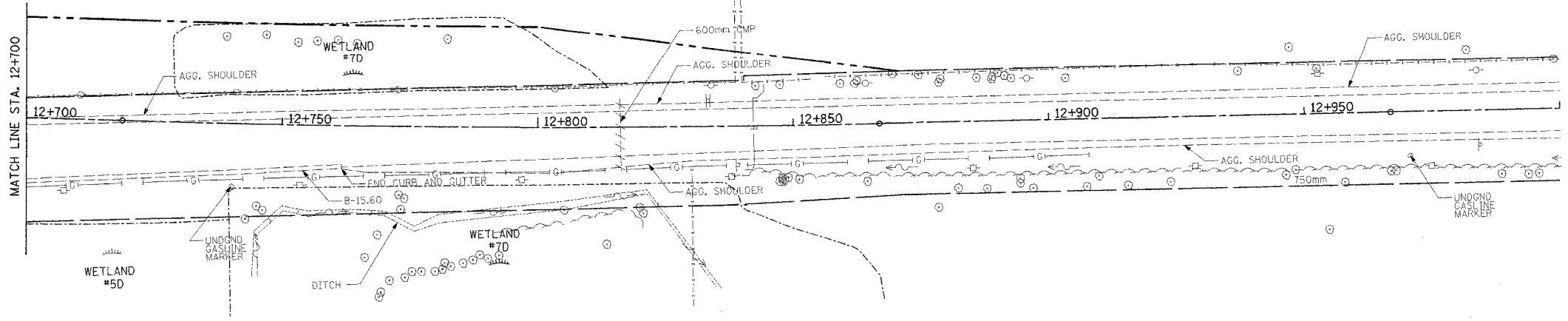


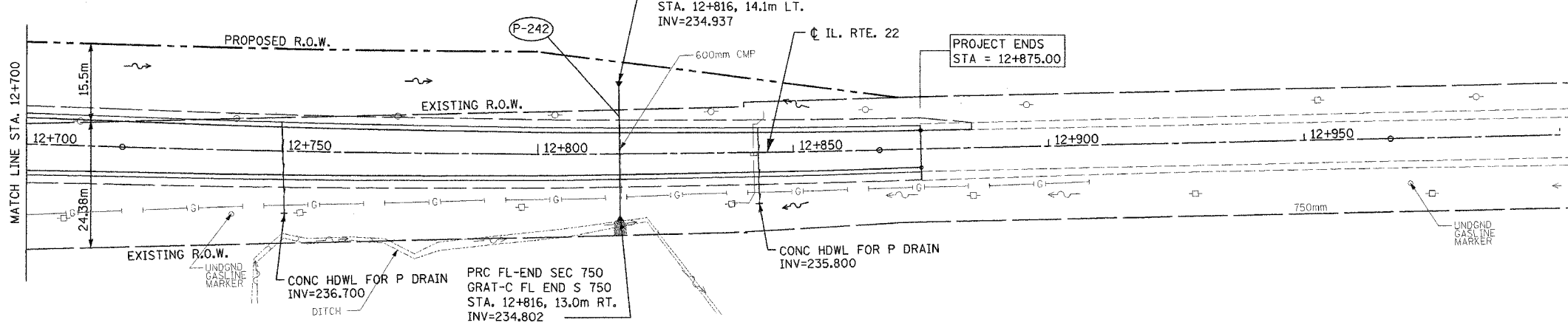
F.A.P. RTE.	SECTION	COUNTY	TOTAL SHEETS	SHEET NO.
337	20 WRS-6	LAKE	312	85
STA. 12+700		TO STA. 12+950		
FED. ROAD DIST. NO.		ILLINOIS FED. AID PROJECT		
CONTRACT NO. 62030				

IL RTE. 22

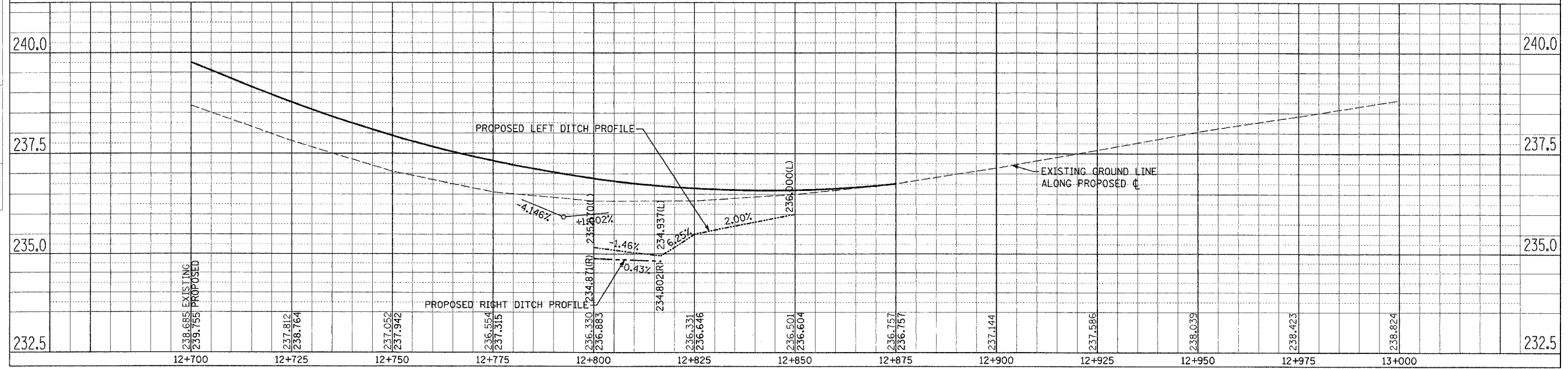
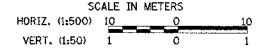


EXISTING

IL RTE. 22



PROPOSED



DRAINAGE AND UTILITIES IL. RTE. 22 STA. 12+700 TO STA. 13+000

FINAL SURVEY PLOTTED	BY	DATE
NOTE BOOK TEMPLATE		
AREAS CHECKED		

ORIGINAL SURVEY PLOTTED	BY	DATE
NOTE BOOK TEMPLATE		
AREAS CHECKED		