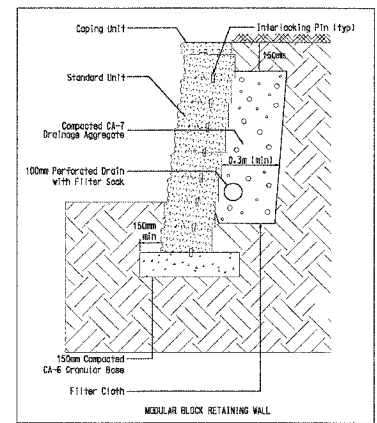
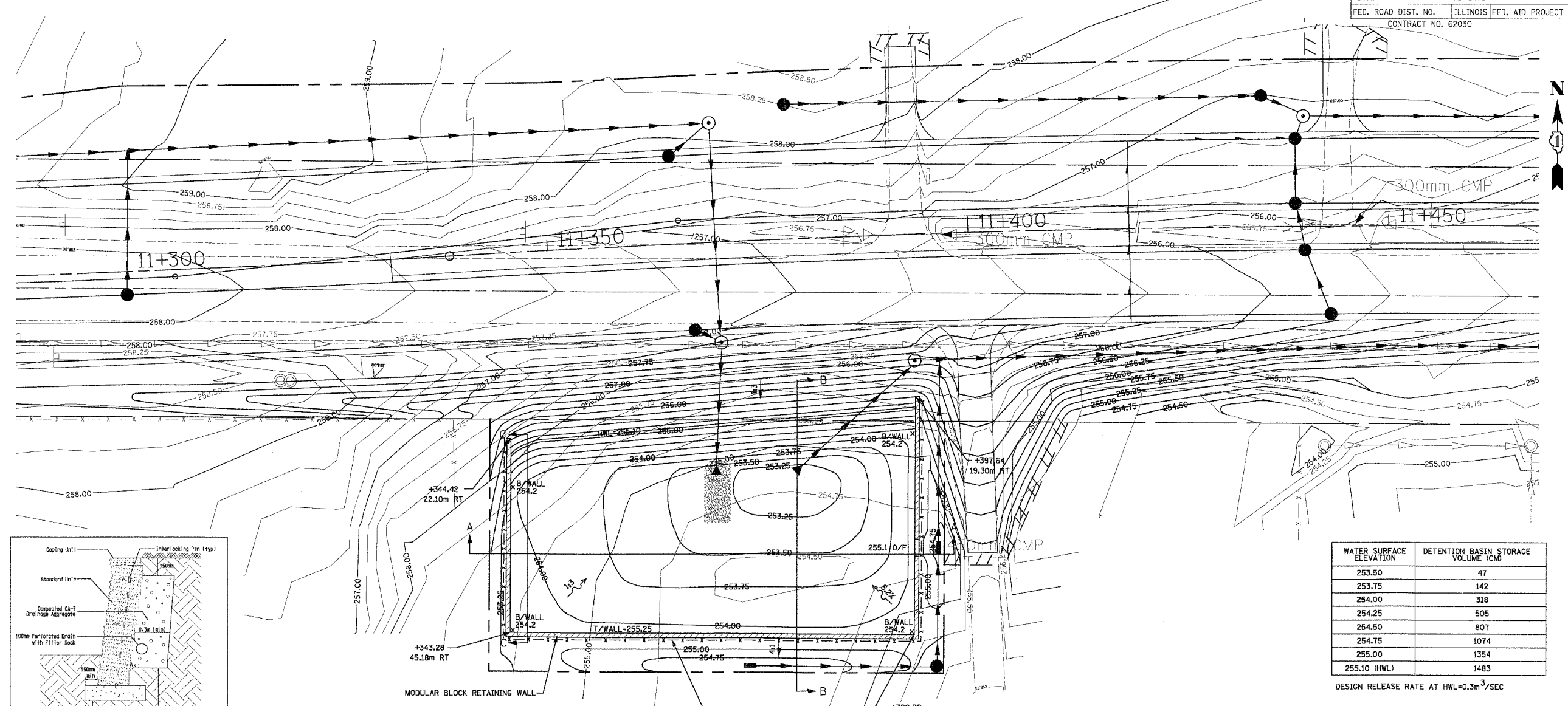


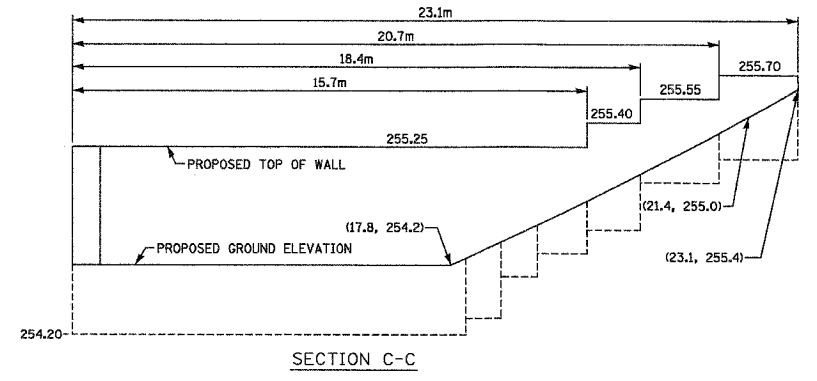
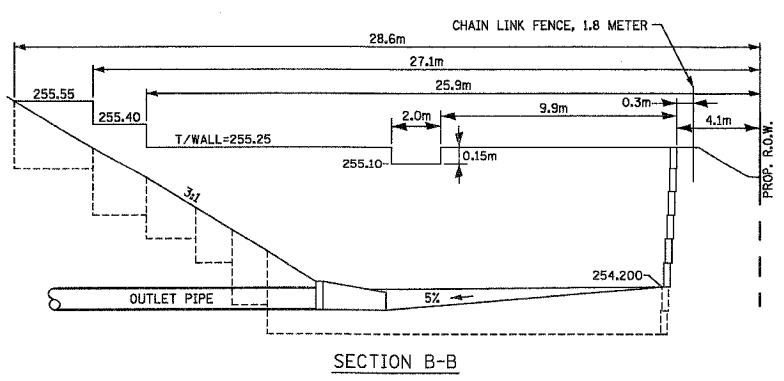
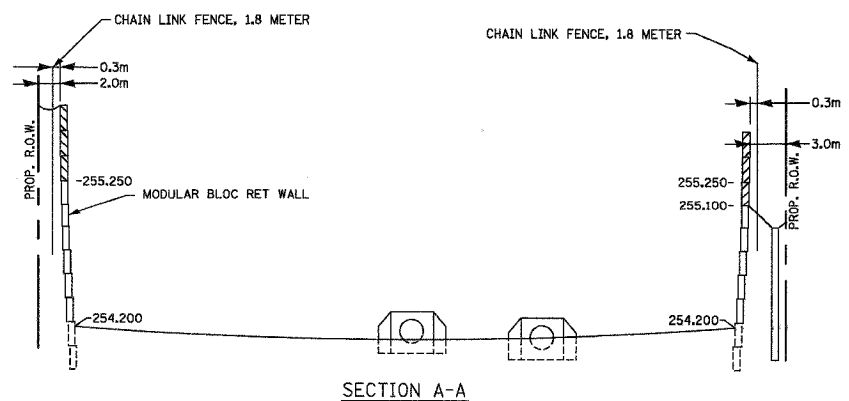
F.A.P. RTE.	SECTION	COUNTY	TOTAL SHEETS	SHEET NO.
337	20 WRS-6	LAKE	318	59
STA.		TO STA.		
FED. ROAD DIST. NO.		ILLINOIS FED. AID PROJECT		
CONTRACT NO. 62030				



WATER SURFACE ELEVATION	DETENTION BASIN STORAGE VOLUME (CM)
253.50	47
253.75	142
254.00	318
254.25	505
254.50	807
254.75	1074
255.00	1354
255.10 (HWL)	1483

DESIGN RELEASE RATE AT HWL=0.3m<sup>3</sup>/SEC

NOTE: IF A FIELD TILE IS ENCOUNTERED DURING CONSTRUCTION, THE FIELD TILE SHALL BE RELOCATED OUTSIDE THE PROPOSED DETENTION BASIN AND CONNECTED INTO AN EXISTING OR PROPOSED DRAINAGE SYSTEM.



REVISIONS		ILLINOIS DEPARTMENT OF TRANSPORTATION ILLINOIS ROUTE 22
NAME	DATE	
		DETENTION BASIN

SCALE IN METERS  
HORIZ. (1:250) DRAWN BY: SMP  
DATE: 03/11/05 CHECKED BY: MGJ