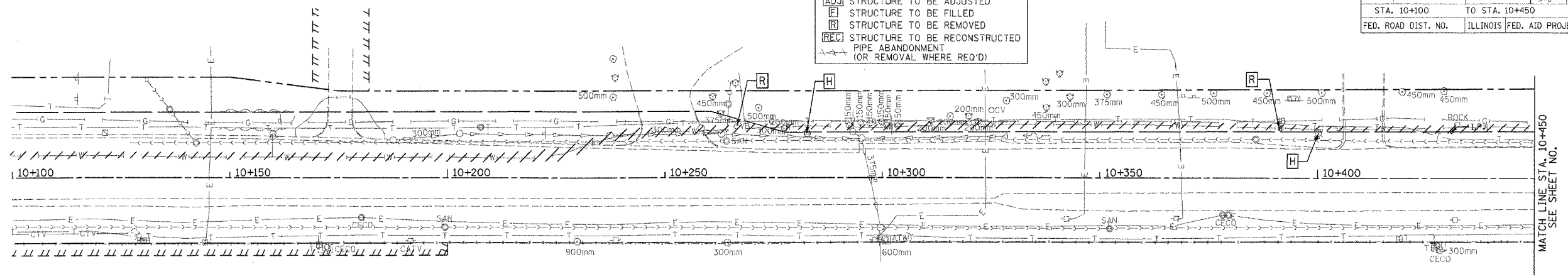


CONTRACT NO. 62030

F.A.P. RTE.	SECTION	COUNTY	TOTAL SHEETS	SHEET NO.
337	20 WRS-6	LAKE	3/8	94
STA. 10+100		TO STA. 10+450		
FED. ROAD DIST. NO.		ILLINOIS	FED. AID PROJECT	

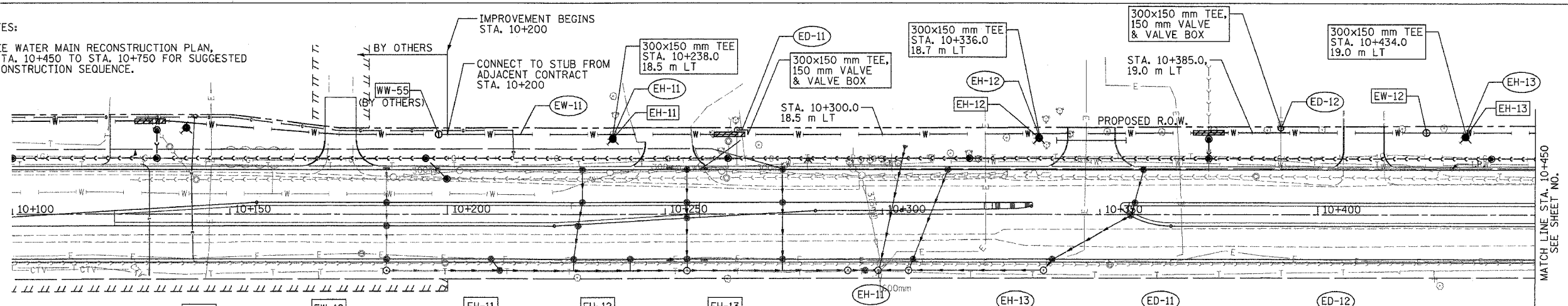
LEGEND

- [H] FIRE HYDRANT TO BE MOVED
- [ADJ] STRUCTURE TO BE ADJUSTED
- [F] STRUCTURE TO BE FILLED
- [R] STRUCTURE TO BE REMOVED
- [REC] STRUCTURE TO BE RECONSTRUCTED
- PIPE ABANDONMENT (OR REMOVAL WHERE REQ'D)



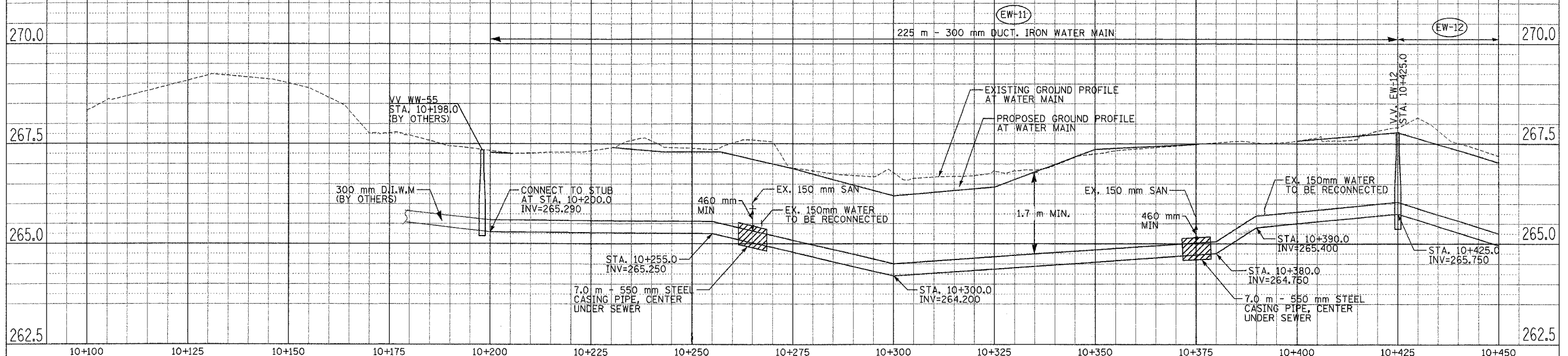
NOTES:

1. SEE WATER MAIN RECONSTRUCTION PLAN, STA. 10+450 TO STA. 10+750 FOR SUGGESTED CONSTRUCTION SEQUENCE.



GRAEF, ANHALT, SCHLOEMER & ASSOCIATES, INC.
 ENGINEERS & SCIENTISTS
 8501 N. Higgins Road, Suite 280
 Chicago, Illinois 60631
 (773) 399-0112

[] STRUCTURE/HYDRANT/FITTING	[] PIPE	EW-12	EH-11	EH-12	EH-13	EH-11	EH-13	EH-11	ED-12
		WATER VALVE 300MM IN VALVE VAULT, TY. A 1.5M DIA. TY. 1 FR & CL STA. 10+425.0 19.0 m LT RIM=267.78	NEW FIRE HYDRANT LOCATION STA. 10+238.0 17.5 m LT	FIRE HYDRANT W/ AUXILIARY VALVE & VALVE BOX STA. 10+336.0 17.5 m LT	NEW FIRE HYDRANT LOCATION STA. 10+434.0 18.0 m LT	1.0 m - 150 mm DUCT. IRON WATER MAIN	1.0 m - 150 mm DUCT. IRON WATER MAIN	2.5 m - 150 mm DUCT. IRON WATER MAIN CONNECT TO EXISTING SERVICE AT PROPERTY LINE VERIFY LOCATION & ELEVATION IN FIELD	1.5 m - 150 mm DUCT. IRON WATER MAIN CONNECT TO EXISTING SERVICE AT PROPERTY LINE VERIFY LOCATION & ELEVATION IN FIELD



WATER MAIN RELOCATION IL. RTE. 22 STA. 10+200 TO STA. 10+450

FILE: H:\Jobs\2003\20034009\CAD\100T\Trans\ dgn\100\veast\app1-WAT.dgn
 DATE: 08-Mar-05 10:22

BY: _____ DATE: _____

ORIGINAL SURVEY PLOTTED: _____

NOTE BOOK TEMPLATE AREAS CHECKED: _____

BY: _____ DATE: _____

ORIGINAL SURVEY PLOTTED: _____

NOTE BOOK TEMPLATE AREAS CHECKED: _____