

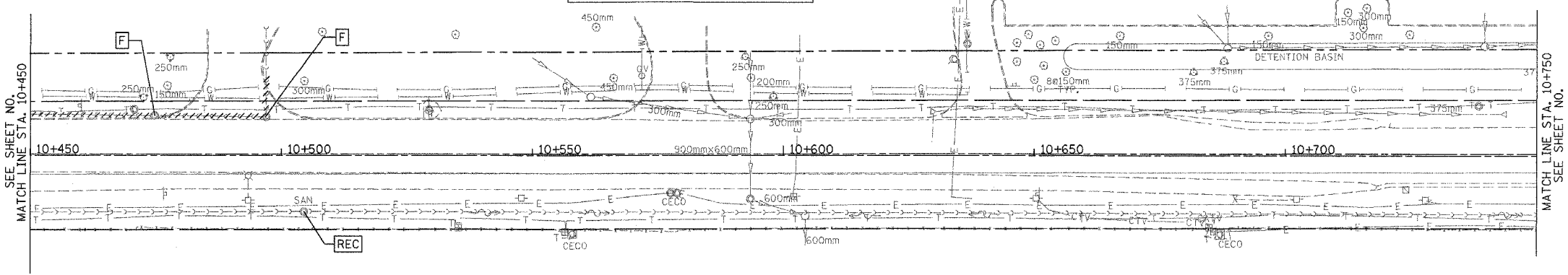
CONTRACT NO. 62030

F.A.P. RTE.	SECTION	COUNTY	TOTAL SHEETS	SHEET NO.
337	20 WRS-6	LAKE	313	11
STA. 10+450		TO STA. 10+750		
FED. ROAD DIST. NO.		ILLINOIS FED. AID PROJECT		

LEGEND

ADJ	STRUCTURE TO BE ADJUSTED
F	STRUCTURE TO BE FILLED
R	STRUCTURE TO BE REMOVED
REC	STRUCTURE TO BE RECONSTRUCTED
---	PIPE ABANDONMENT (OR REMOVAL WHERE REQ'D)

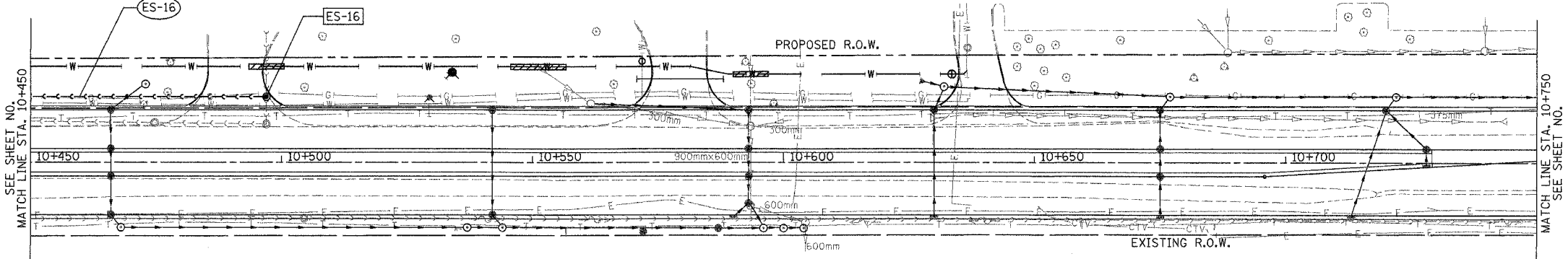
BY	DATE
FINAL SURVEYED SURVEY PLOTTED	
NOTE BOOK TEMPLATE	
AREAS	
AREAS CHECKED	
NO.	



EXISTING ILLINOIS ROUTE 22

ES-16
 SAN, MH 1.2M DIA.
 W/ FR, LID &
 CHIMNEY SEAL
 STA.10+497.0, 13.0 m LT
 RIM=266.20
 INV(N)=265.070 (EX)
 INV(W)=265.022 (PROP)
 (VERIFY LOCATION &
 INVERTS IN FIELD)

STRUCTURE
 PIPE



GRAEF, ANHALT, SCHLOEMER & ASSOCIATES, INC.
 ENGINEERS & SCIENTISTS
 8501 W. Higgins Road, Suite 280
 Chicago, Illinois 60631
 (773) 399-0112

PROPOSED ILLINOIS ROUTE 22
 SCALE:
 HORIZ. 1:500
 VERT. 1:50

BY	DATE
ORIGINAL SURVEYED SURVEY PLOTTED	
NOTE BOOK TEMPLATE	
AREAS	
AREAS CHECKED	
NO.	

