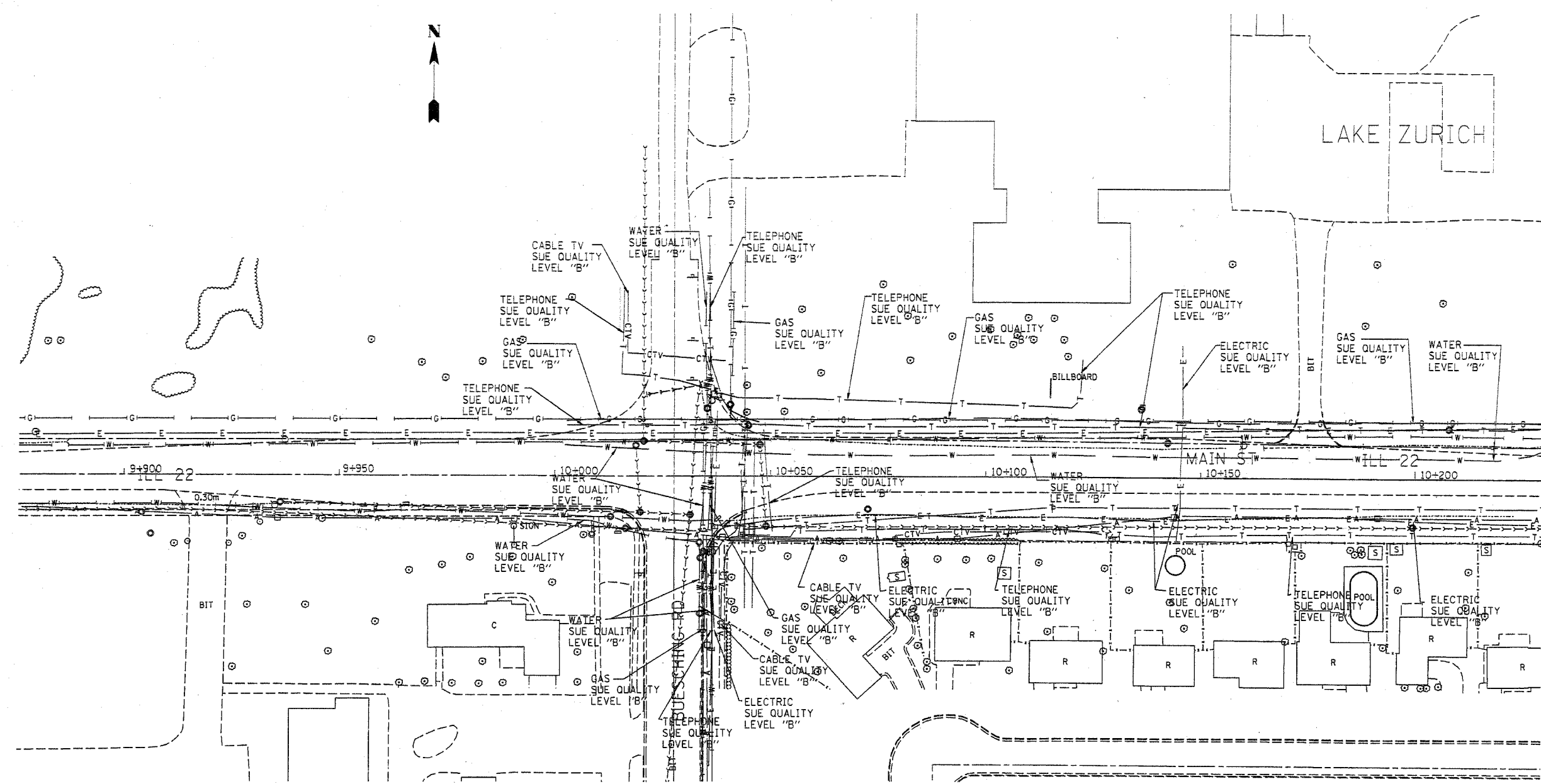


F.A. RTE.	SECTION	COUNTY	TOTAL SHEETS	SHEET NO.
22	20WRS-6	LAKE	3/8	106
STA.		TO STA.		
FED. ROAD DIST. NO.		ILLINOIS FED. AID PROJECT		




—T—T—	TELEPHONE
—W—W—	WATER
—G—G—	GAS
—CTV—CTV—CTV—	CABLE TELEVISION
—FO—FO—FO—	FIBER OPTIC
—E—E—	ELECTRIC

TBE GROUP, INC.
 CIVIL ENGINEERING * TRANSPORTATION * ENVIRONMENTAL
 * PLANNING * UTILITY ENGINEERING * LOCATING
 SOUTHERN REGION: FL, GA, SC, NC
 NORTHERN REGION: IL, IN, MI, OH, MD, NJ, NY
 PA, VA, CANADA
 WESTERN REGION: AZ, NV, NM, TX, CA, OR, UT, WA

IL09500126
 TBE SUE PAGE NO: 1 of 11
 Signature *Sandoz*
 SUE Quality Level "A" : Test Holes
 SUE Quality Level "B" : Designating

Utilities shown on these plans as depicted in the legend have been investigated by TBE Group, Inc in accordance with SUE Industry Standards as of 4/16/02.
 All other information shown has been provided to TBE Group, Inc by others.

 205 W. WACKER DRIVE SUITE 1020 CHICAGO, IL 60606 (312) 704-1970	REVISIONS		ILLINOIS DEPARTMENT OF TRANSPORTATION SUE Investigation of Underground Utilities IL RT.22 E. of Beusching Rd. to Quetin Rd. SCALE : 500 SQL "B" DATE : 4/16/02
	NAME	DATE	
		DRAWN BY : JAC CHECKED BY :	