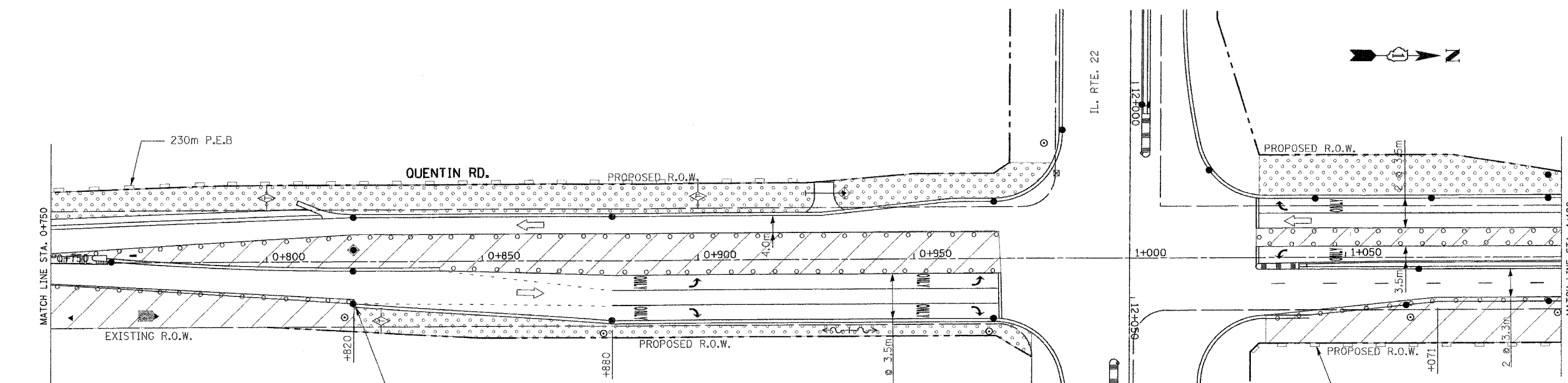
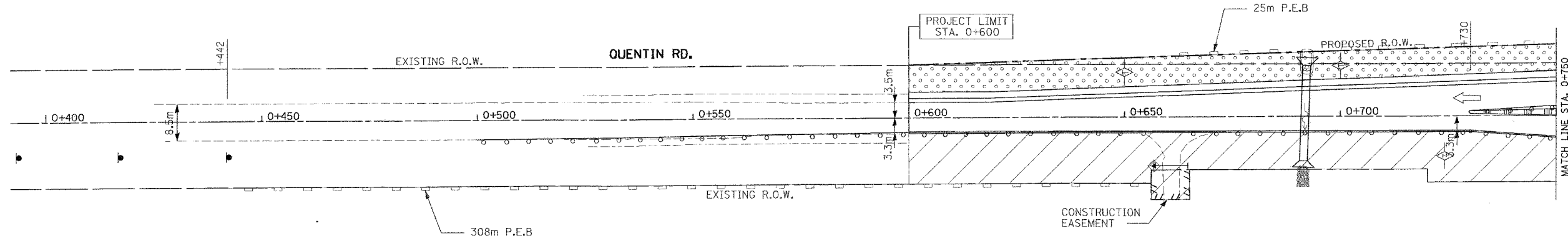


F.A.P. RTE.	SECTION	COUNTY	TOTAL SHEETS	SHEET NO.
337	20 WRS-6	LAKE	3/8	1/71
STA. 0+400		TO STA. 1+100		
FED. ROAD DIST. NO.		ILLINOIS FED. AID PROJECT		
CONTRACT NO. 62030				



LEGEND

- PERIMETER EROSION BARRIER (P.E.B.)
- CONSTRUCTION FENCE
- TEMPORARY EROSION CONTROL SEEDING
- INLET FILTERS
- INLET AND PIPE PROTECTION
- TEMPORARY DITCH CHECKS
- SEDIMENT BASIN
- EROSION CONTROL BLANKET
- TEMPORARY PAVEMENT
- CONSTRUCTION AREA
- DRAINAGE STRUCTURES

NOTE: ALL CURBLINE STRUCTURES SHALL HAVE INLET FILTERS

TEMPORARY EROSION CONTROL NOTES

1. SEDIMENT AND EROSION CONTROL DEVICES SHALL BE FUNCTIONAL BEFORE LAND IS OTHERWISE DISTURBED ON THE SITE.
2. IF A STOCKPILE IS TO REMAIN IN PLACE FOR MORE THAN 3 DAYS, THEN SEDIMENT AND EROSION CONTROL DEVICES SHALL BE INSTALLED DURING CONSTRUCTION.
3. STORM SEWER INLETS SHALL BE PROTECTED WITH SEDIMENT TRAPPING OR FILTER CONTROL DEVICES DURING CONSTRUCTION.
4. THE QUANTITIES SHOWN FOR INLET & PIPE PROTECTION AND TEMPORARY DITCH CHECKS ARE SUFFICIENT FOR ONE (1) SETUP AND THREE (3) REPLACEMENTS.
5. THE CONTRACTOR SHALL MAINTAIN ALL EROSION CONTROL MEASURES IN SERVICEABLE CONDITION AT ALL TIMES. EROSION CONTROL MEASURES WILL BE INSPECTED WITHIN 24 HOURS OF ANY STORM EXCEEDING 0.5 INCHES OF PRECIPITATION.
6. ALL CONSTRUCTION ACTIVITIES SHALL BE IN ACCORDANCE WITH THE NATIONAL POLLUTANT DISCHARGE ELIMINATION SYSTEM STORM WATER PERMIT FOR THIS PROJECT.
7. AS WORK PROGRESSES, ALL SLOPES 1:3 OR GREATER SHALL RECEIVE TEMPORARY EROSION CONTROL SEEDING AND EROSION CONTROL BLANKET IMMEDIATELY. ALL FLATTER AREAS THAT DO NOT HAVE A COVER OF VEGETATION, AND WHERE NO FURTHER WORK IS TO OCCUR FOR ONE MONTH OR MORE, SHALL BE TEMPORARILY SEEDING WITHIN SEVEN (7) CALENDAR DAYS UNLESS OTHERWISE DIRECTED BY THE ENGINEER. A SUFFICIENT QUANTITY OF TEMPORARY EROSION CONTROL SEEDING IS INCLUDED TO COVER THE LIMITS OF PERMANENT LANDSCAPING.
8. TEMPORARY DITCH CHECKS SHALL BE PLACED IMMEDIATELY AFTER DITCH GRADING (OR CLEANING AND REGRADING) IS COMPLETED.
9. ALL PROPOSED OPEN LID DRAINAGE STRUCTURES SHALL BE PROTECTED AS DIRECTED BY THE ENGINEER WITH INLET FILTERS, AND THIS WORK SHALL BE PAID FOR AT THE CONTRACT UNIT PRICE EACH FOR "INLET FILTERS". ALL OPEN END CULVERTS SHALL BE PROTECTED AS DIRECTED BY THE ENGINEER, WHICH WORK SHALL BE PAID FOR AT THE CONTRACT UNIT PRICE EACH FOR "INLET AND PIPE PROTECTION".
10. WATER PUMPED OR OTHERWISE DISCHARGED FROM THE SITE DURING CONSTRUCTION DEWATERING SHALL BE FILTERED.
11. ANY SOIL, MUD OR DEBRIS WASHED, TRACKED, OR DEPOSITED ONTO THE STREET SHALL BE REMOVED PRIOR TO THE END OF THE WORK DAY.

REVISIONS	
NAME	DATE

ILLINOIS DEPARTMENT OF TRANSPORTATION
ILLINOIS ROUTE 22
STORMWATER POLLUTION PREVENTION PLAN
STAGE III
STA. 0+400 TO STA. 1+100
SCALE IN METERS
HORIZ. (1:5000) DRAWN BY: SMP
DATE: 03/11/05 CHECKED BY: MGJ