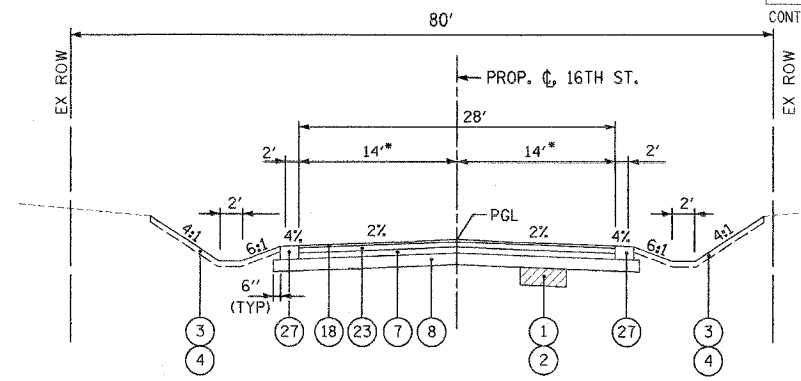


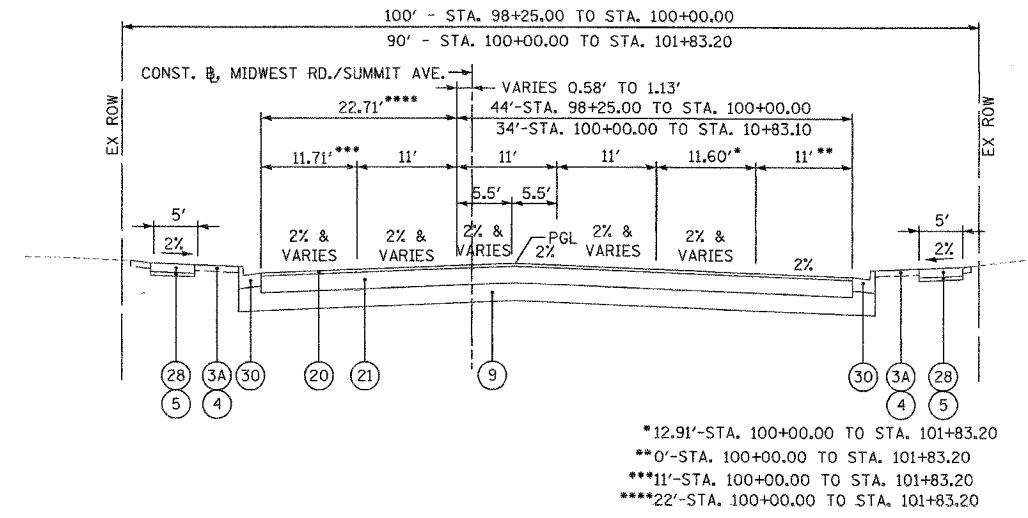
PROPOSED TYPICAL SECTION - MIDWEST ROAD
STA. 95+82.45 TO STA. 98+25.00



PROPOSED TYPICAL SECTION - 16TH STREET & MARSHALL DRIVE
STA. 10+00.00 TO STA. 11+15.83 (16TH STREET)
STA. 10+30.60 TO STA. 10+81.38 (MARSHALL DRIVE)

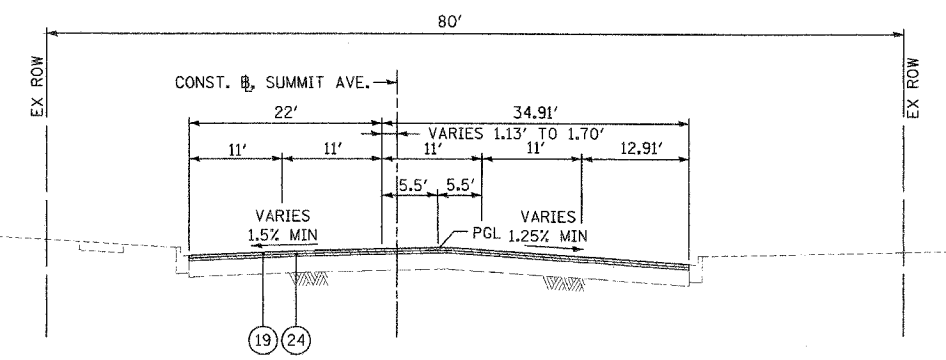
LEGEND

- | | |
|--|---|
| <ul style="list-style-type: none"> ① POROUS GRANULAR EMBANKMENT, SUBGRADE (AT LOCATIONS DESIGNATE BY THE ENGINEER OR AS SHOWN ON THE PLANS) ② GEOTECHNICAL FABRIC FOR GROUND STABILIZATION (AT LOCATIONS DESIGNATED BY THE ENGINEER OR AS SHOWN ON THE PLANS) ③ TOPSOIL FURNISH AND PLACE, 4" ③A TOPSOIL FURNISH AND PLACE, 6" ④ SEEDING OR SODDING, SALT TOLERANT (SEE LANDSCAPING PLANS) ⑤ SUB-BASE GRANULAR MATERIAL, TYPE B 2" (COST INCLUDED IN P.C.C. SIDEWALK 5") ⑥ SUB-BASE GRANULAR MATERIAL, TYPE B 4" (COST INCLUDED IN COMB. CONC. C&G, TYPE B-6.24) ⑦ SUB-BASE GRANULAR MATERIAL, TYPE B 4" ⑧ AGGREGATE SUBGRADE 8" ⑨ AGGREGATE SUBGRADE 12" ⑩ AGGREGATE SUBGRADE 16" ⑪ AGGREGATE SHOULDERS, TYPE B, 8" ⑫ SUB-BASE GRANULAR MATERIAL, TYPE C (COST INCLUDED IN AGGREGATE SUBGRADE 12") ⑬ CONCRETE MEDIAN SURFACE 4" (AT LOCATIONS DESIGNATED BY THE ENGINEER) ⑭ NOT USED ⑮ NOT USED | <ul style="list-style-type: none"> ⑯ STRIP REFLECTIVE CRACK CONTROL TREATMENT ⑰ BITUMINOUS CONCRETE SURFACE COURSE, SUPERPAVE, MIX "C", N50, 2" ⑱ BITUMINOUS CONCRETE SURFACE COURSE, SUPERPAVE, MIX "C", N50, 1 1/2" ⑲ POLYMERIZED BITUMINOUS CONCRETE SURFACE COURSE, SUPERPAVE, MIX "F", N90, 1 3/4" ⑳ POLYMERIZED BITUMINOUS CONCRETE SURFACE COURSE, SUPERPAVE, MIX "F", N90, 2" ㉑ BITUMINOUS CONCRETE BINDER COURSE, SUPERPAVE, IL-19.0, N90, (1 1/2") ㉒ BITUMINOUS CONCRETE BINDER COURSE, SUPERPAVE, IL-19.0, N90, (1 1/2") ㉓ BITUMINOUS CONCRETE BINDER COURSE, SUPERPAVE, IL-19.0, N50, (3 1/2") ㉔ POLYMERIZED LEVELING BINDER (MACHINE METHOD), SUPERPAVE, IL 4.75 N50, 3/4" ㉔A POLYMERIZED LEVELING BINDER (MACHINE METHOD), SUPERPAVE N70, VARIABLE DEPTH ㉕ BITUMINOUS SHOULDER SUPERPAVE 8" ㉖ PORTLAND CEMENT CONCRETE BASE COURSE 8" ㉗ PORTLAND CEMENT CONCRETE SHOULDERS 9" ㉘ PORTLAND CEMENT CONCRETE SIDEWALK 5" ㉙ COMBINATION CONCRETE CURB AND GUTTER, TYPE B-6.24 ㉚ COMBINATION CONCRETE CURB AND GUTTER, TYPE B-6.24 (MODIFIED) (THICKNESS OF GUTTER FLAG SHALL BE A MINIMUM 12") |
|--|---|



PROPOSED TYPICAL SECTION - MIDWEST RD./SUMMIT AVE.
STA. 98+25.00 TO STA. 101+83.20

*12.91'-STA. 100+00.00 TO STA. 101+83.20
**0'-STA. 100+00.00 TO STA. 101+83.20
***11'-STA. 100+00.00 TO STA. 101+83.20
****22'-STA. 100+00.00 TO STA. 101+83.20



PROPOSED TYPICAL SECTION - SUMMIT AVENUE
STA. 101+83.20 TO STA. 104+42.22

SOILS NOTE:

POROUS GRANULAR EMBANKMENT SUBGRADE (PGES) HAS BEEN PROVIDED AT THE LOCATIONS INDICATED FOR SOILS WHICH TEND TO BE UNSTABLE WHEN WET. THE ACTUAL NEED FOR REMOVAL AND REPLACEMENT WITH PGE WILL BE DETERMINED IN THE FIELD AT THE TIME OF CONSTRUCTION BY THE ENGINEER (BY USE OF A CONE PENETROMETER IN CONJUNCTION WITH THE IDOT SUBGRADE MANUAL). IF UNSTABLE SOILS ARE ENCOUNTERED THE SOILS SHALL BE REMOVED AND REPLACED WITH PGE. IF UNSTABLE SOIL IS NOT ENCOUNTERED, THEN THE QUANTITY WILL BE DEDUCTED AND NO ADDITIONAL COMPENSATION WILL BE DUE THE CONTRACTOR.

THE LIMITS OF UNSTABLE SOILS ARE AT THE APPROXIMATE LOCATIONS AS FOLLOWS:

STA. TO STA.	ESTIMATED UNDERCUT DEPTH	ESTIMATED UNDERCUT
IL ROUTE 56:		
228+65 TO 230+50	12"	473 CU YD
233+00 TO 236+00	6"	384 CU YD
240+00 TO 242+50	12"	639 CU YD
242+50 TO 246+50	12"	1,023 CU YD WITH GEOTECHNICAL FABRIC
258+00 TO 261+00	12"	767 CU YD WITH GEOTECHNICAL FABRIC
267+50 TO 271+50	12"	1,081 CU YD
274+50 TO 277+50	12"	822 CU YD WITH GEOTECHNICAL FABRIC

REVISIONS	
NAME	DATE

ILLINOIS DEPARTMENT OF TRANSPORTATION
F.A.U. ROUTE 3545
IL RTE 56 (GUTTERFIELD ROAD)

PROPOSED TYPICAL SECTIONS
MIDWEST RD./SUMMIT AVE.
AND 16TH STREET

SCALE: NTS
DATE: 2/20/04

DRAWN BY: SMP
CHECKED BY: BDH