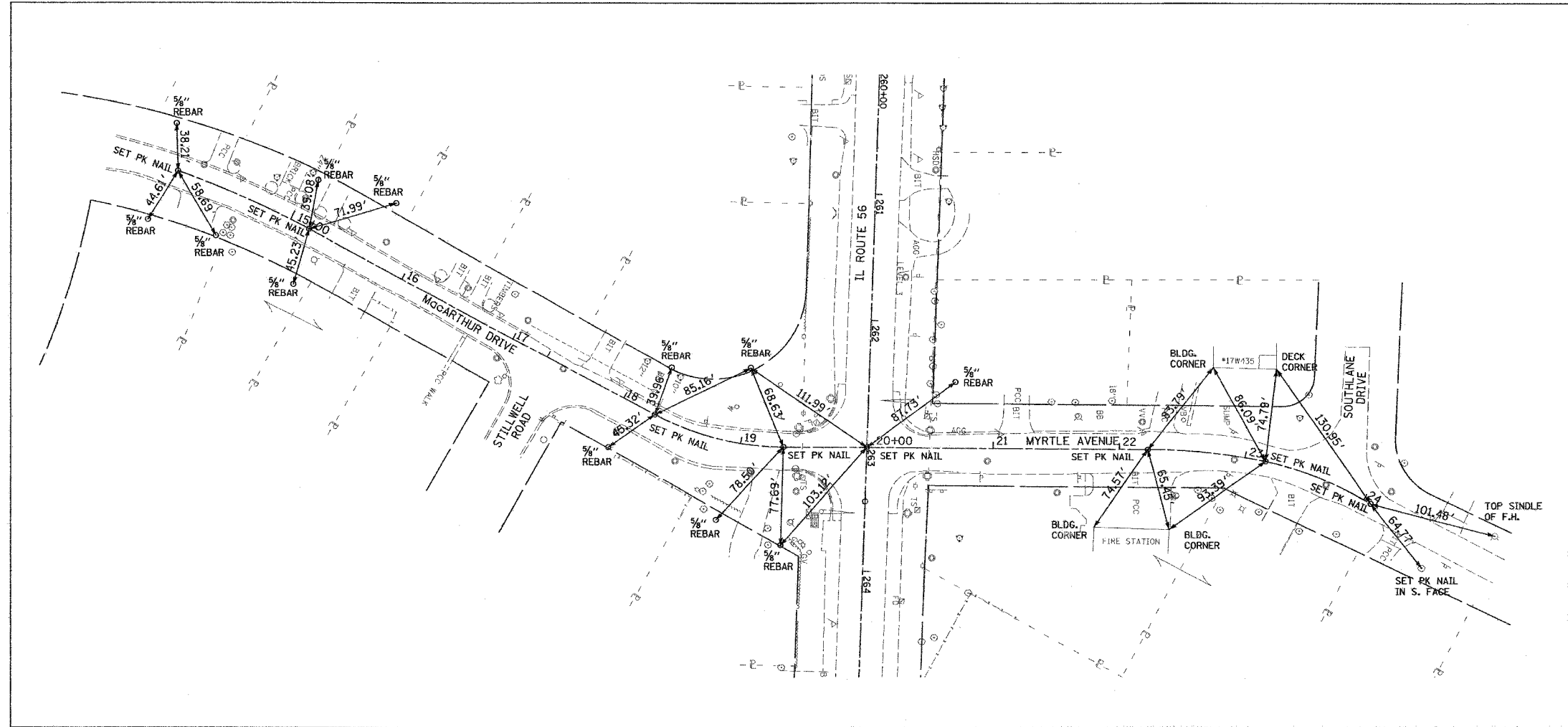


F.A.U. RTE.	SECTION	COUNTY	TOTAL SHEETS	SHEET NO.
3545	54-WRS-7	DUPAGE	235	27
STA.		TO STA.		
FED. ROAD DIST. NO.		ILLINOIS FED. AID PROJECT		
CONTRACT NO. 62291				

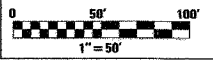


McARTHUR DRIVE/MYRTLE AVENUE
P.C., STA. 14+03.05
P.T., STA. 15+16.51
P.C., STA. 18+27.88
P.T., STA. 19+34.03
P.O.T., STA. 20+00.07
P.C., STA. 22+22.61
P.C.C., STA. 23+16.44
P.T., STA. 24+06.45

REVISIONS	
NAME	DATE

ILLINOIS DEPARTMENT OF TRANSPORTATION
F.A.U. ROUTE 3545
IL RTE 56 (BUTTERFIELD ROAD)

ALIGNMENT, TIES AND
BENCH MARKS



DATE: 2/20/04
DRAWN BY: SMP
CHECKED BY: BDH