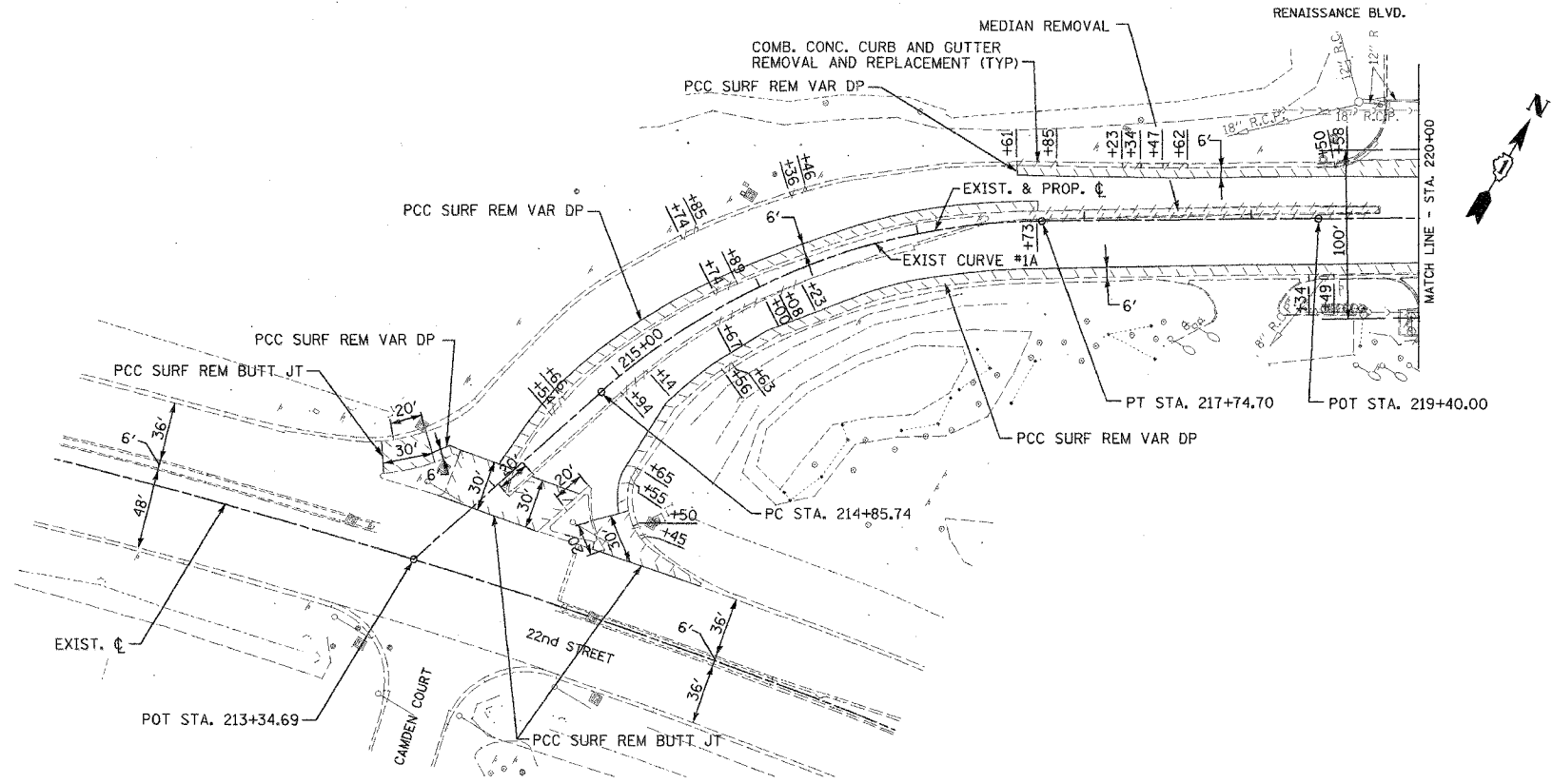
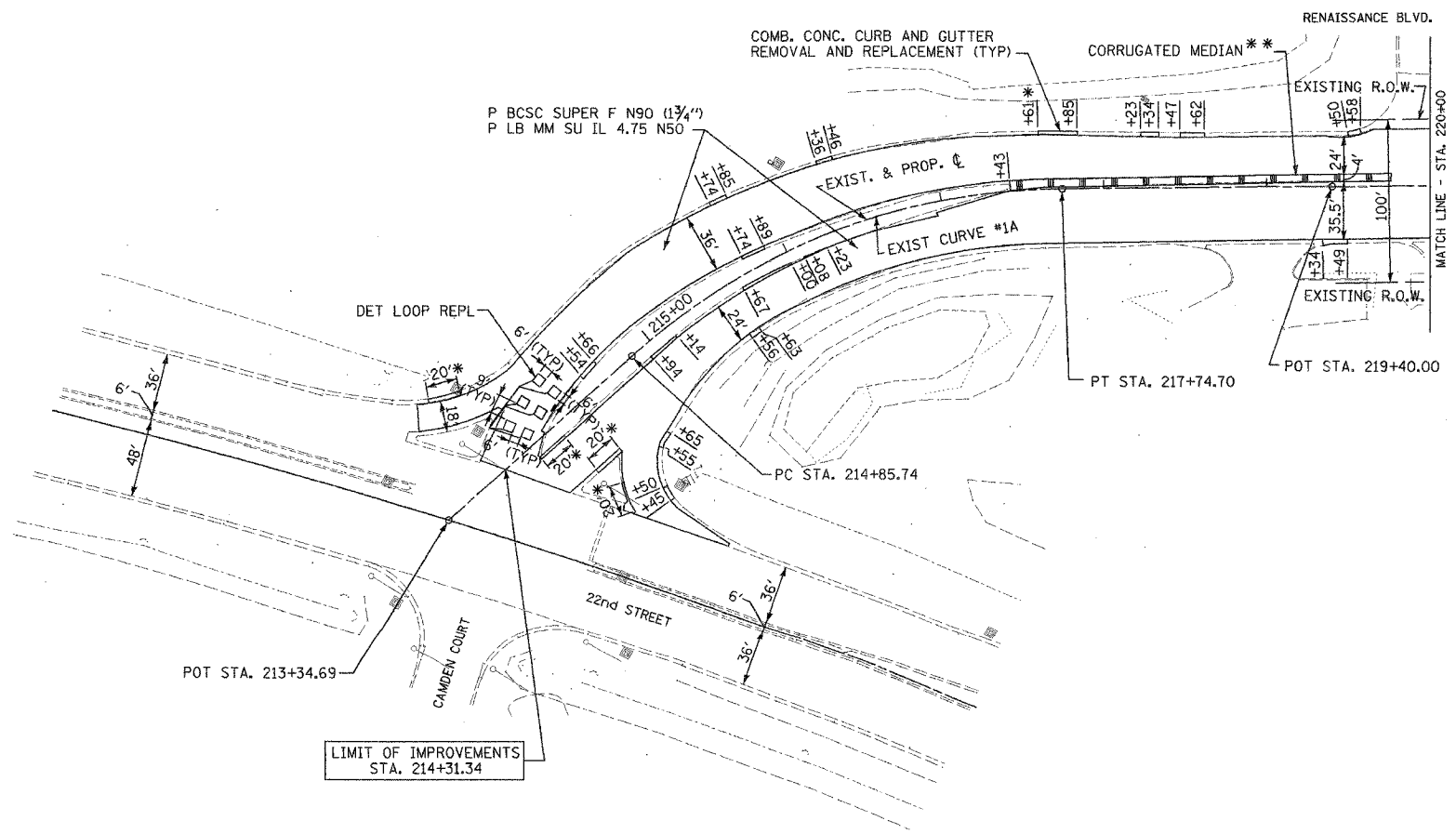


F.A.I. RTE.	SECTION	COUNTY	TOTAL SHEETS	SHEET NO.
3545	54-WRS-7	DuPAGE	235	45
STA. 213+34.69		TO STA. 220+00		
FED. ROAD DIST. NO.		ILLINOIS	FED. AID PROJECT	
CONTRACT NO. 62291				



- LEGEND**
- PAVEMENT REMOVAL OR DRIVEWAY PAVEMENT REMOVAL, BIT. SHOULDER REMOVAL, BIT. SURFACE REMOVAL OR PCC SURFACE REMOVAL
  - COMBINATION CURB AND GUTTER REMOVAL OR CURB REMOVAL (AS NOTED)
  - SIDEWALK REMOVAL

EXISTING ILLINOIS ROUTE 56



- NOTES:**
- \* CONSTRUCT NEW CURB AND GUTTER WITH EDGE OF PAVEMENT 2.5" HIGHER THAN EXISTING TO MATCH ELEVATION OF PROPOSED GUTTER OVERLAY. (MATCH TOPS OF CURBS)
  - \* CONSTRUCT NEW CORRUGATED MEDIAN 2.5" HIGHER THAN EXISTING TO MATCH ELEVATION OF PROPOSED SURFACE COURSE. IMPROVED SUBGRADE REQUIRED TO RAISE GRADE SHALL BE INCLUDED IN THE COST PER SQUARE FOOT OF CORRUGATED MEDIAN.

**EXIST. CURVE #1A**  
 P.I. STA=216+36.85  
 $\Delta=41^{\circ}23'27''$   
 R=400.00'  
 T=151.11'  
 L=288.96'  
 E=27.59'  
 S.E.=6%  
 P.C. STA=214+85.74  
 P.T. STA=217+74.70

REVISIONS	
NAME	DATE

PROPOSED ILLINOIS ROUTE 56

ILLINOIS DEPARTMENT OF TRANSPORTATION  
 F.A.I. ROUTE 3545  
 IL RTE 56 (BUTTERFIELD ROAD)

ILLINOIS ROUTE 56  
 PLAN SHEET  
 STA. 213+34.69 TO STA. 220+00

0 50' 100'  
 1" = 50'

DATE: 2/20/04  
 DRAWN BY: SMP  
 CHECKED BY: BDH

DATE	
BY	
REVISIONS	
PLOTTED	
CHECKED	
STRUCTURE	
INITIALS	
CHRS	
NO.	
NOTE BOOK	
NO.	
DATE	
BY	
REVISIONS	
PLOTTED	
CHECKED	
STRUCTURE	
INITIALS	
CHRS	
NO.	
NOTE BOOK	
NO.	

DATE	
BY	
REVISIONS	
PLOTTED	
CHECKED	
STRUCTURE	
INITIALS	
CHRS	
NO.	
NOTE BOOK	
NO.	
DATE	
BY	
REVISIONS	
PLOTTED	
CHECKED	
STRUCTURE	
INITIALS	
CHRS	
NO.	
NOTE BOOK	
NO.	