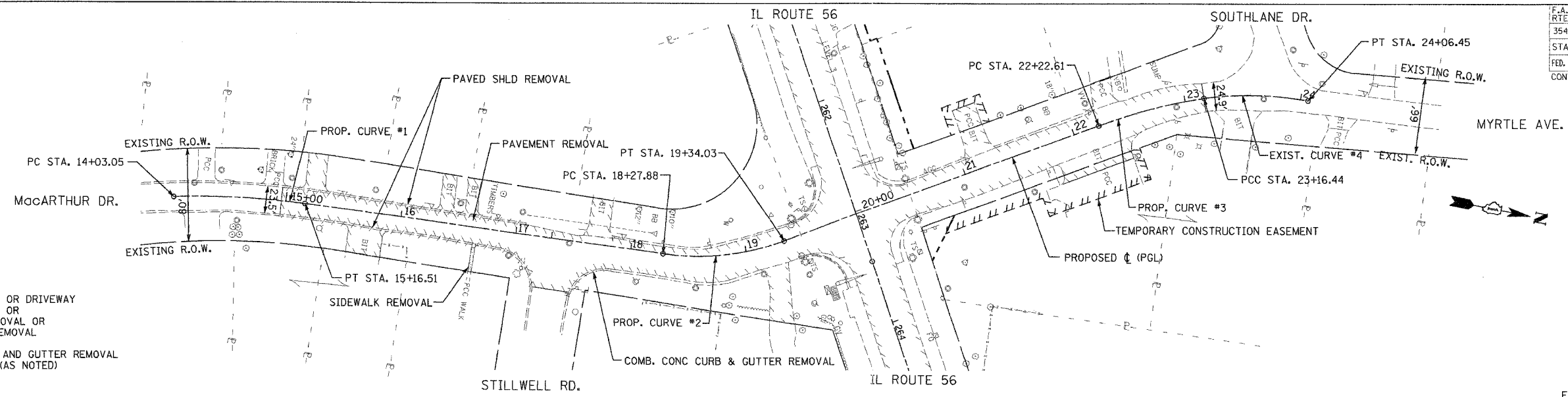
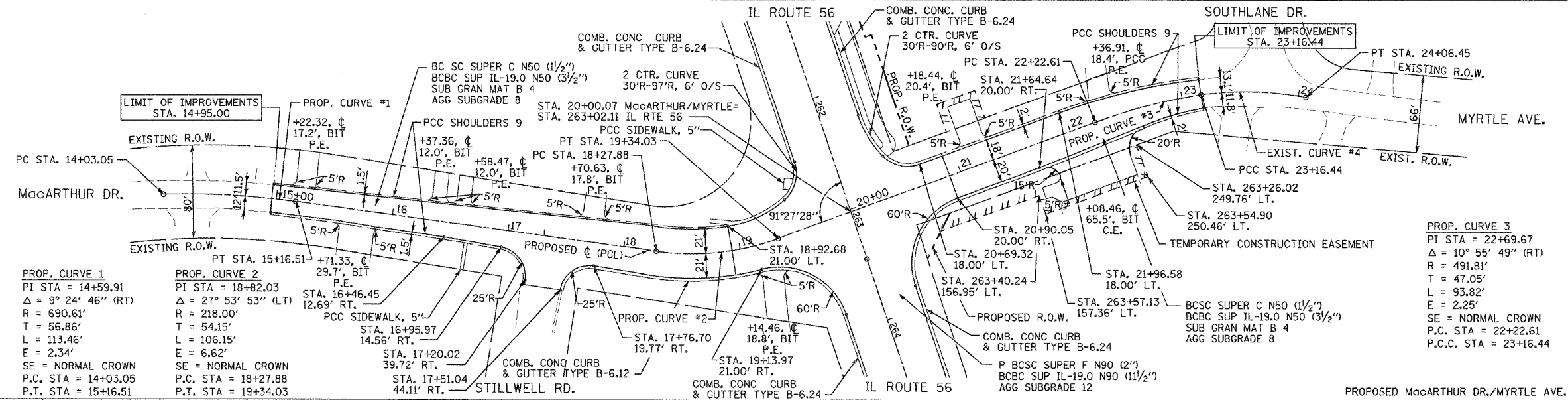


F.A.I.D. RTE.	SECTION	COUNTY	TOTAL SHEETS	SHEET NO.
3545	54-WRS-7	DuPAGE	235	53
STA. 14+00		TO STA. 24+00		
FED. ROAD DIST. NO.		ILLINOIS	FED. AID PROJECT	
CONTRACT NO. 62291				



- LEGEND**
- PAVEMENT REMOVAL OR DRIVEWAY
  - PAVEMENT REMOVAL OR BIT, SHOULDER REMOVAL OR PAVED SHOULDER REMOVAL
  - COMBINATION CURB AND GUTTER REMOVAL OR CURB REMOVAL (AS NOTED)
  - SIDEWALK REMOVAL



**PROP. CURVE 1**  
 PI STA = 14+59.91  
 $\Delta = 9^\circ 24' 46''$  (RT)  
 R = 690.61'  
 T = 56.86'  
 L = 113.46'  
 E = 2.34'  
 SE = NORMAL CROWN  
 P.C. STA = 14+03.05  
 P.T. STA = 15+16.51

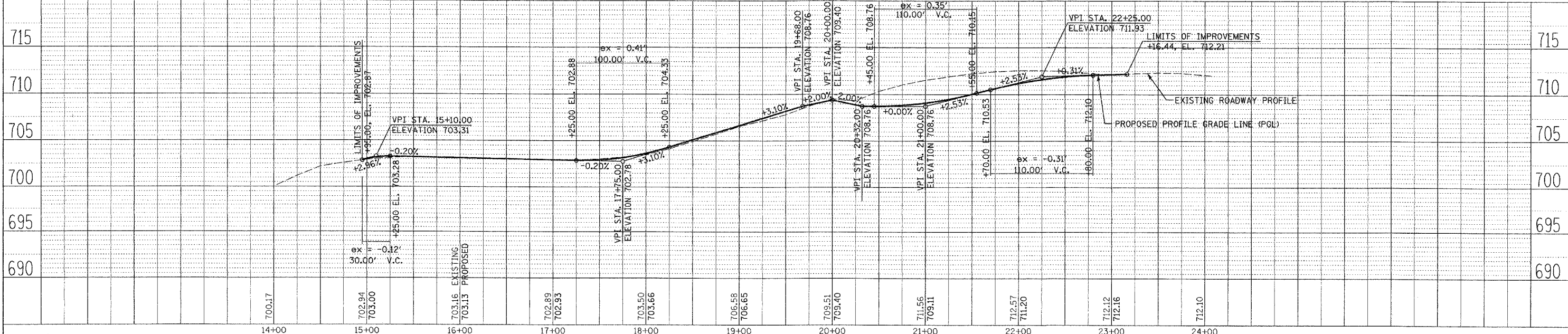
**PROP. CURVE 2**  
 PI STA = 18+82.03  
 $\Delta = 27^\circ 53' 53''$  (LT)  
 R = 218.00'  
 T = 54.15'  
 L = 106.15'  
 E = 6.62'  
 SE = NORMAL CROWN  
 P.C. STA = 18+27.88  
 P.T. STA = 19+34.03

**PROP. CURVE #1**  
 PI STA = 16+46.45  
 $\Delta = 12^\circ 16' 30''$  (RT)  
 R = 1456.00'  
 T = 14.56'  
 L = 14.56'  
 E = 14.56'  
 SE = NORMAL CROWN  
 P.C. STA = 16+95.97  
 P.T. STA = 17+34.03

**PROP. CURVE #2**  
 PI STA = 17+76.70  
 $\Delta = 19^\circ 17' 28''$  (RT)  
 R = 197.77'  
 T = 19.77'  
 L = 19.77'  
 E = 19.77'  
 SE = NORMAL CROWN  
 P.C. STA = 17+20.02  
 P.T. STA = 17+51.04

**PROP. CURVE #3**  
 PI STA = 22+69.67  
 $\Delta = 10^\circ 55' 49''$  (RT)  
 R = 491.81'  
 T = 47.05'  
 L = 93.82'  
 E = 2.25'  
 SE = NORMAL CROWN  
 P.C. STA = 22+22.61  
 P.T. STA = 23+16.44

**EXIST. CURVE 4**  
 PI STA = 23+61.82  
 $\Delta = 18^\circ 05' 12''$  (RT)  
 R = 285.15'  
 T = 45.38'  
 L = 90.01'  
 E = 3.59'  
 SE = NORMAL CROWN  
 P.C. STA = 23+16.44  
 P.T. STA = 24+06.45



PLAN AND PROFILE MacARTHUR DRIVE/MYRTLE AVENUE

DATE	BY
DATE	BY
DATE	BY

DATE	BY
DATE	BY
DATE	BY