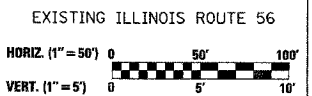
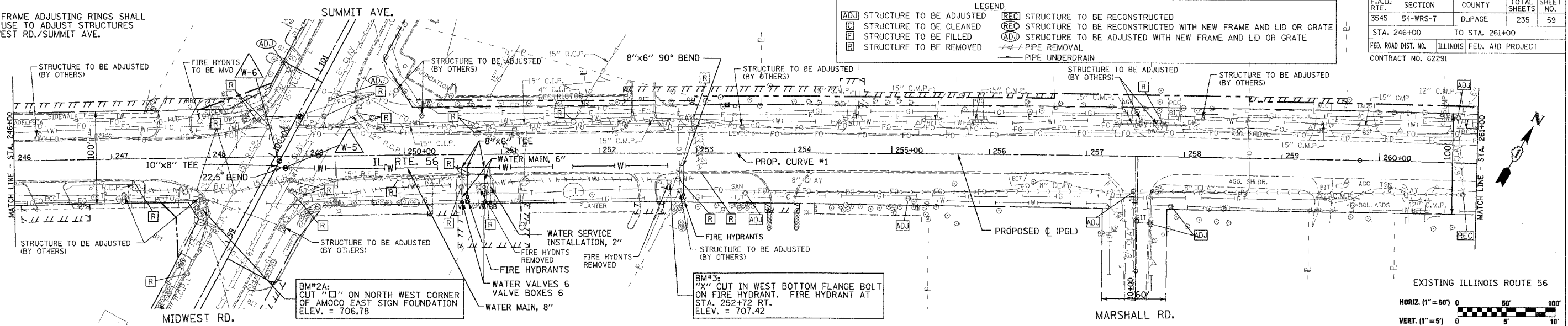


NOTE: TOP OF FRAME ADJUSTING RINGS SHALL NOT BE USED TO ADJUST STRUCTURES ON MIDWEST RD./SUMMIT AVE.

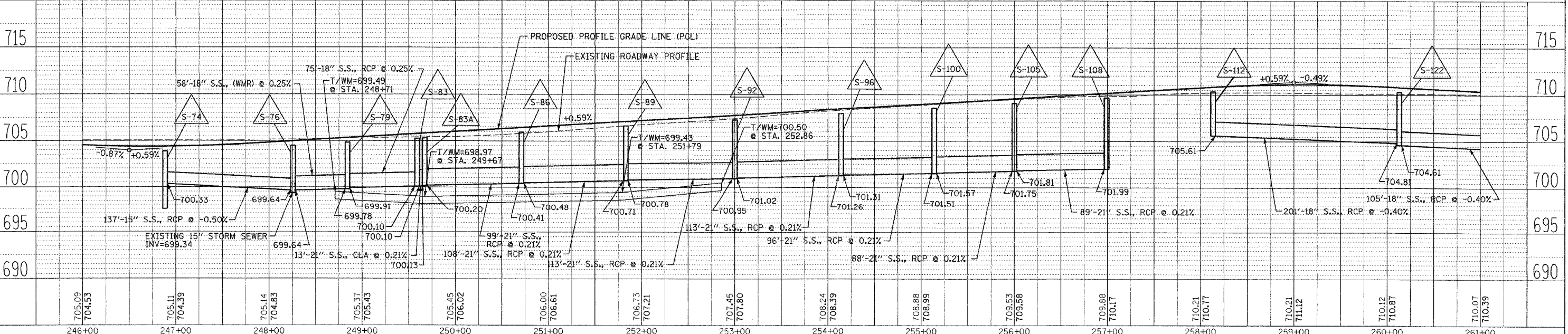
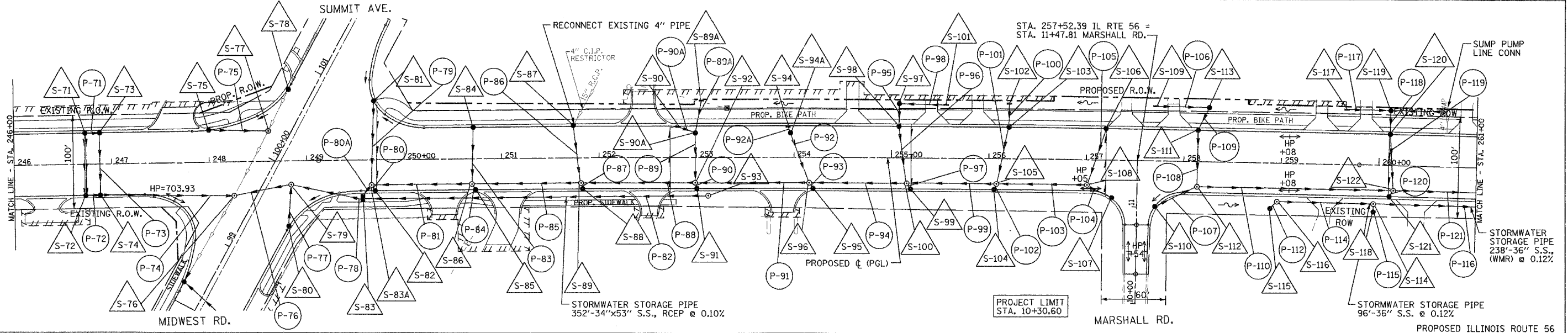
LEGEND	
ADJ	STRUCTURE TO BE ADJUSTED
REC	STRUCTURE TO BE RECONSTRUCTED
C	STRUCTURE TO BE CLEANED
F	STRUCTURE TO BE FILLED
R	STRUCTURE TO BE REMOVED
REC	STRUCTURE TO BE RECONSTRUCTED WITH NEW FRAME AND LID OR GRATE
ADJ	STRUCTURE TO BE ADJUSTED WITH NEW FRAME AND LID OR GRATE
ADJ	PIPE UNDERDRAIN

F.A.U. R.T.E.	SECTION	COUNTY	TOTAL SHEETS	SHEET NO.
3545	54-WRS-7	DuPAGE	235	59
STA. 246+00		TO STA. 261+00		
FED. ROAD DIST. NO.		ILLINOIS		FED. AID PROJECT
CONTRACT NO. 62291				



DATE	BY	REVISION
		DESIGNED
		PLOTTED
		ALIGNED
		CHECKED
		FILED
		NO.

DATE	BY	REVISION
		DESIGNED
		PLOTTED
		ALIGNED
		CHECKED
		FILED
		NO.



DRAINAGE AND UTILITIES IL. RTE. 56 STA. 246+00 TO STA. 261+00