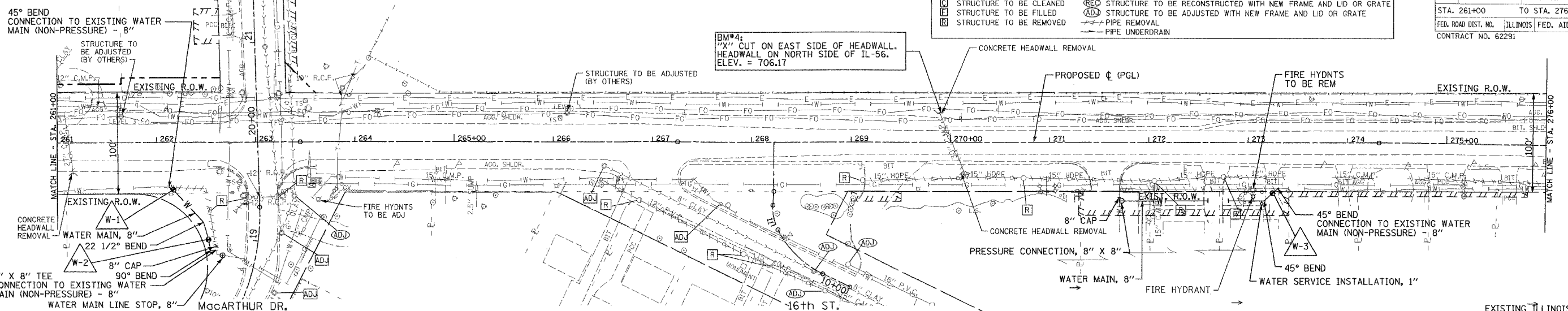


MYRTLE AVE.

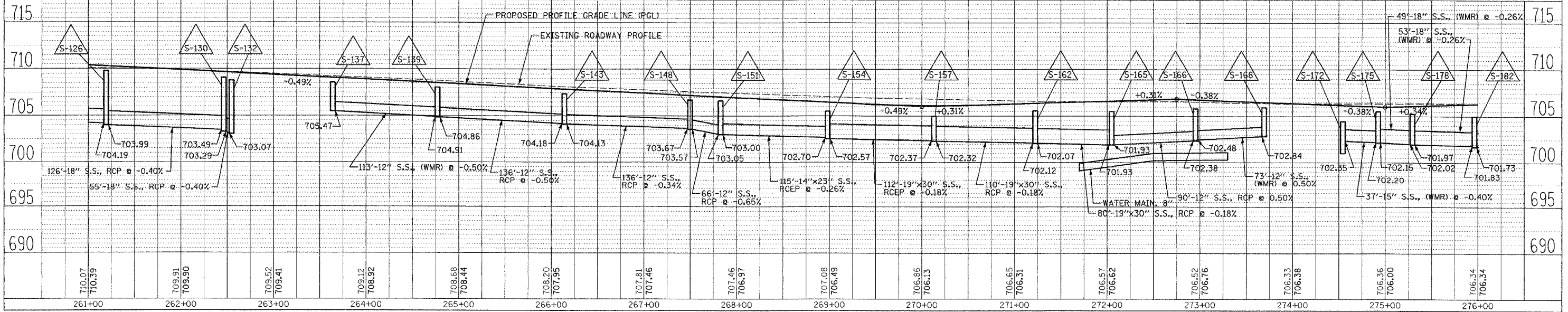
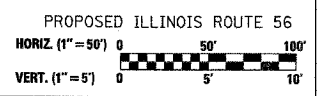
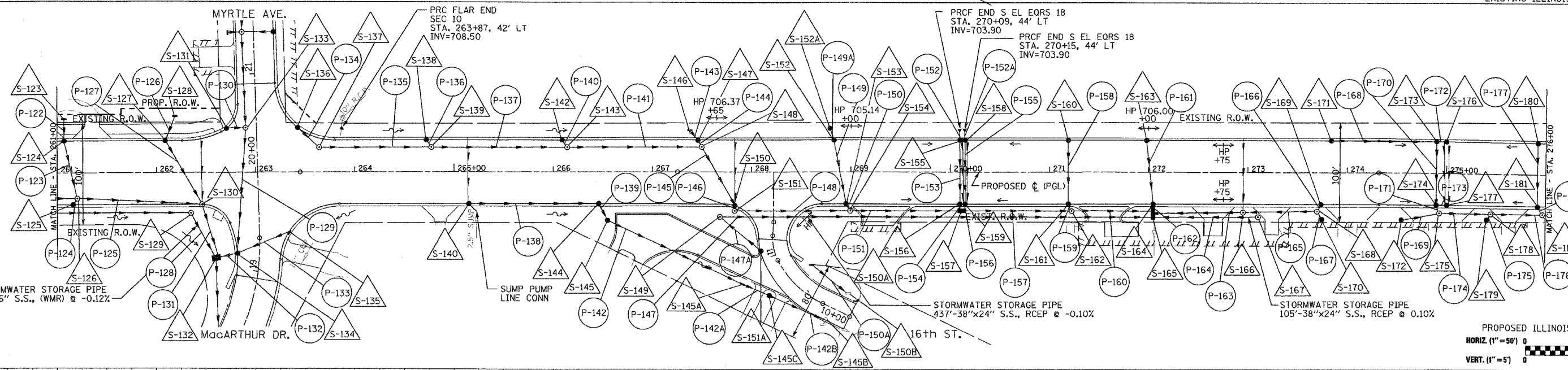
LEGEND

| | | | |
|-----|--------------------------|-----|---|
| ADJ | STRUCTURE TO BE ADJUSTED | REC | STRUCTURE TO BE RECONSTRUCTED |
| C | STRUCTURE TO BE CLEANED | REC | STRUCTURE TO BE RECONSTRUCTED WITH NEW FRAME AND LID OR GRATE |
| F | STRUCTURE TO BE FILLED | ADJ | STRUCTURE TO BE ADJUSTED WITH NEW FRAME AND LID OR GRATE |
| R | STRUCTURE TO BE REMOVED | — | PIPE REMOVAL |
| | | — | PIPE UNDERDRAIN |

| | | | | |
|---------------------|----------|---------------------------|--------------|-----------|
| F.A.U. RTE. | SECTION | COUNTY | TOTAL SHEETS | SHEET NO. |
| 3545 | 54-WRS-7 | DUPAGE | 235 | 61 |
| STA. 261+00 | | TO STA. 276+00 | | |
| FED. ROAD DIST. NO. | | ILLINOIS FED. AID PROJECT | | |
| CONTRACT NO. 62291 | | | | |



BM#4:
"X" CUT ON EAST SIDE OF HEADWALL,
HEADWALL ON NORTH SIDE OF IL-56.
ELEV. = 706.17



DRAINAGE AND UTILITIES IL. RTE. 56 STA. 261+00 TO STA. 276+00