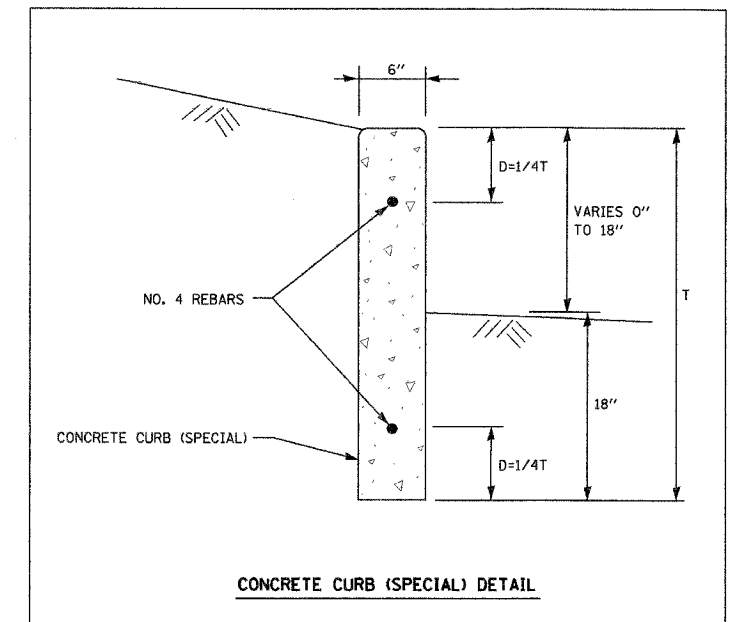


- GENERAL NOTES:
1. PRE-CAST REINFORCED CONCRETE RISERS, TOP AND BOTTOM SHALL CONFORM TO ASTM C-478.
 2. MANHOLE STEPS SHALL BE POLYPROPYLENE COATED STEEL BAR, M.A. INDUSTRIES PS1-PF, AMERICAN STEP COMPANY ML-10, LANE P-10938, OR APPROVED EQUAL.
 3. ALL LIFTING HOLES SHALL BE FILLED AND SEALED WITH MORTAR.

SANITARY SEWER MANHOLE



REVISIONS	
NAME	DATE

ILLINOIS DEPARTMENT OF TRANSPORTATION
 F.A.U. ROUTE 3545
 IL RTE 56 (BUTTERFIELD ROAD)

UTILITY AND CONSTRUCTION DETAILS

SCALE: NTS
 DATE: 2/20/04

DRAWN BY: SMP
 CHECKED BY: MGJ