

F.A.U. RTE.	SECTION	COUNTY	TOTAL SHEETS	SHEET NO.
3545	54 WRS-7	DUPAGE	235	115
STA.	TO STA.			
FED. ROAD DIST. NO.	ILLINOIS	FED. AID PROJECT:		
D-91-386-01	CONTRACT NO. 62291			

**NOTES FOR TEMPORARY TRAFFIC SIGNALS**

- ALL CONTROL EQUIPMENT INCLUDING EMERGENCY PRE-EMPTION AND COMMUNICATION DEVICES FOR THE TEMPORARY TRAFFIC SIGNAL(S) SHALL BE FURNISHED BY THE CONTRACTOR.
- ONLY CONTROLLERS SUPPLIED BY ONE OF THE DISTRICT APPROVED CLOSED LOOP EQUIPMENT MANUFACTURERS WILL BE APPROVED FOR USE AT TEMPORARY SIGNAL LOCATIONS. ALL CONTROLLERS USED FOR TEMPORARY TRAFFIC SIGNALS SHALL BE FULLY ACTUATED NEMA MICROPROCESSOR BASED WITH RS232 DATA ENTRY PORTS COMPATIBLE WITH EXISTING MONITORING SOFTWARE APPROVED BY IDOT DISTRICT 1. INSTALLED IN A NEMA TS1 OR TS2 CABINET. ONLY ONE BRAND OF CONTROLLER WILL BE ACCEPTED FOR ANY ONE CONTRACT.
- ALL TRAFFIC SIGNAL SECTIONS AND PEDESTRIAN SIGNAL SECTIONS SHALL BE 12". HEADS SHALL BE PLACED AS INDICATED ON THE TEMPORARY TRAFFIC SIGNAL PLAN OR AS DIRECTED BY THE ENGINEER. THE CONTRACTOR SHALL FURNISH ENOUGH CABLE SLACK TO RELOCATE HEADS TO ANY POSITION ON THE SPAN WIRE OR AT LOCATIONS ILLUSTRATED ON THE PLANS FOR CONSTRUCTION STAGING. THE TEMPORARY TRAFFIC SIGNAL SHALL REMAIN IN OPERATION DURING ALL SIGNAL HEAD RELOCATIONS. EACH TEMPORARY TRAFFIC SIGNAL SHALL HAVE ITS OWN CABLE FROM THE CONTROLLER CABINET TO THE SIGNAL HEAD.
- ALL EXISTING STREET NAME AND INTERSECTION REGULATORY SIGNS SHALL BE REMOVED FROM EXISTING POLES, RELOCATED AND SECURELY FASTENED TO THE SIGNAL SPAN WIRE OR WOOD POLE AS DIRECTED BY THE ENGINEER.
- ANY TEMPORARY SIGNAL WITHIN AN EXISTING CLOSED LOOP TRAFFIC SIGNAL SYSTEM SHALL BE INTERCONNECTED TO THAT SYSTEM USING SIMILAR BRAND CONTROL EQUIPMENT.
- THE TEMPORARY TRAFFIC SIGNAL SHALL HAVE THE SIGNAL HEAD DISPLAYS, SIGNAL HEAD PLACEMENTS AND CONTROLLER PHASING MATCH THE EXISTING TRAFFIC SIGNAL, AT THE TIME OF THE TURN ON. IF NO TRAFFIC STAGING IS IN PLACE OR WILL NOT BE STAGED ON THE DAY OF THE TURN ON.

THE FOLLOWING EXISTING TRAFFIC SIGNAL EQUIPMENT SHALL BE REMOVED BY THE CONTRACTOR, SHALL REMAIN THE PROPERTY OF THE STATE AND SHALL BE DELIVERED BY THE CONTRACTOR TO THE STATE'S TRAFFIC SIGNAL MAINTENANCE CONTRACTOR'S MAIN FACILITY AS PER THE TRAFFIC SIGNAL SPECIFICATIONS.

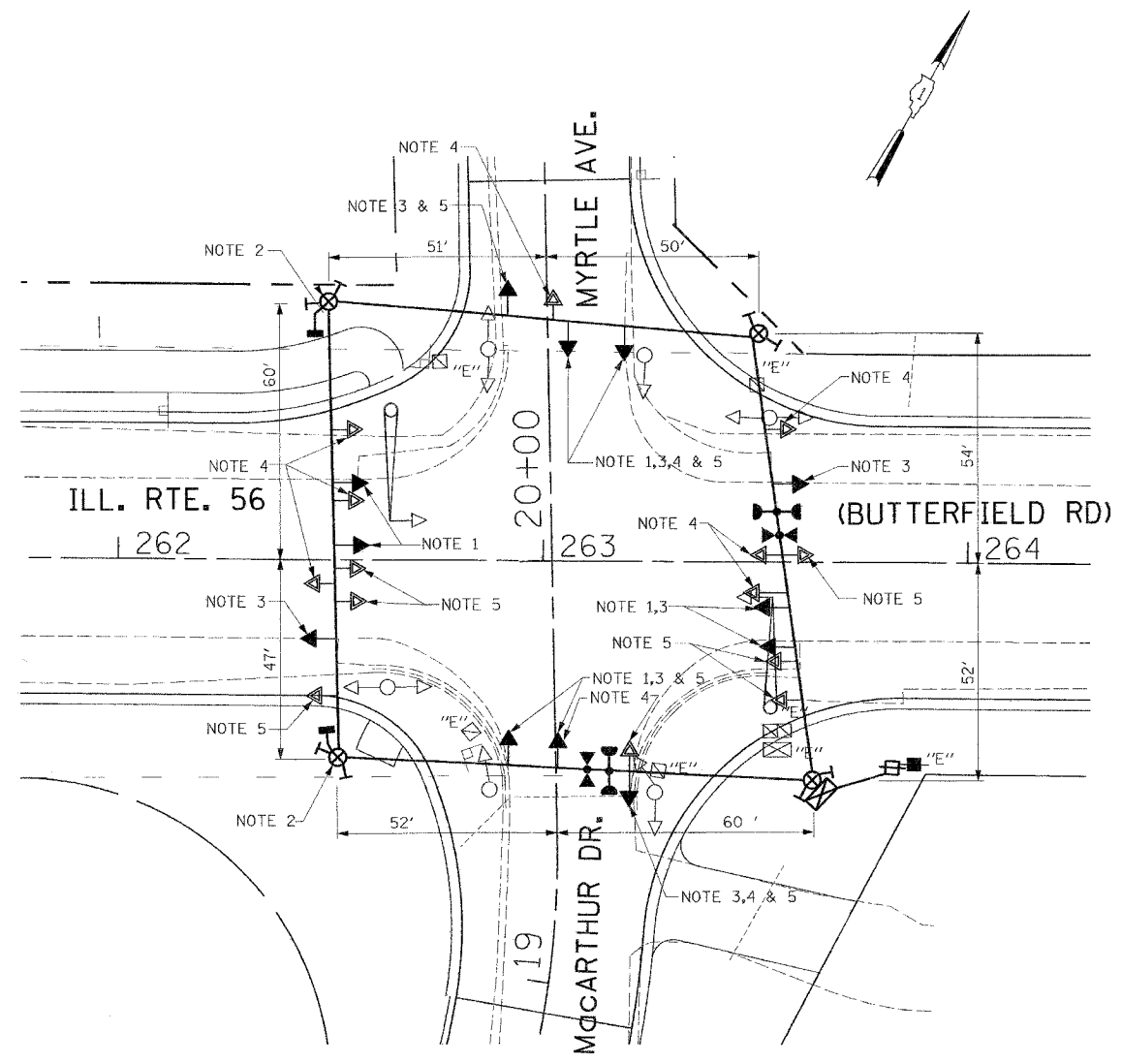
- 1 EACH CONTROLLER AND CABINET, COMPLETE

THE FOLLOWING ITEMS SHALL BE REMOVED BY THE CONTRACTOR AND SHALL BE DISPOSED OF BY THEM OUTSIDE THE RIGHT-OF-WAY AT THEIR EXPENSE. THE SALVAGE VALUE OF THE REMOVED EQUIPMENT SHALL BE REFLECTED IN THE CONTRACT BID PRICE.

- 2 EACH SIGNAL HEAD, 1-FACE, 3-SECTION, BRACKET MOUNTED
- 2 EACH SIGNAL HEAD, 1-FACE, 3-SECTION, MAST ARM MOUNTED
- 4 EACH SIGNAL HEAD, 2-FACE, 3-SECTION, BRACKET MOUNTED
- 2 EACH TRAFFIC SIGNAL BACKPLATE
- 4 EACH TRAFFIC SIGNAL POST, 14 FT.
- 2 EACH ALUMINUM MAST ARM ASSEMBLY AND POLE
- 1 EACH SERVICE INSTALLATION

THE FOLLOWING EXISTING TRAFFIC SIGNAL EQUIPMENT SHALL BE REMOVED BY THE CONTRACTOR, SHALL REMAIN THE PROPERTY OF THE OAK BROOK TERRACE CITY AND SHALL BE DELIVERED BY THE CONTRACTOR TO THE STATE'S TRAFFIC SIGNAL MAINTENANCE CONTRACTOR'S MAIN FACILITY AS PER THE TRAFFIC SIGNAL SPECIFICATIONS.

- 1 EACH FIRE PRE-EMPTOR CP-100



**TEMPORARY TRAFFIC SIGNAL LEGEND**

- ← TEMPORARY TRAFFIC SIGNAL HEAD SPAN WIRE MOUNTED ORIGINAL LOCATION
- ↖ TEMPORARY TRAFFIC SIGNAL HEAD SPAN WIRE MOUNTED SECONDARY LOCATION
- ⊗ TEMPORARY WOOD POLE (CLASS 5 OR BETTER) 45 FOOT (13.7m) MINIMUM
- ⊠ TEMPORARY CONTROLLER CABINET
- TEMPORARY SPAN WIRE, TETHER WIRE, AND CABLE
- ⊕ TEMPORARY SERVICE INSTALLATION
- ⊔ TEMPORARY PEDESTRIAN SIGNAL HEAD, BRACKET MOUNTED
- ⊙ MICROWAVE VEHICLE SENSOR
- ⊙ PEDESTRIAN PUSHBUTTON DETECTOR
- ⊙ EMERGENCY VEHICLE LIGHT DETECTOR
- ⊙ CONFIRMATION BEACON
- ⊙ VEHICLE DETECTOR, INDUCTION LOOP
- ⊙ COMMON TRENCH
- UD UNIT DUCT
- G.S. CONDUIT IN GROUND
- ⊔ HANDHOLE
- ⊔ HEAVY DUTY HANDHOLE

**EXISTING EQUIPMENT TO BE REMOVED LEGEND**

- ← EXISTING SIGNAL TO BE REMOVED
- ⊔ "E" EXISTING SERVICE INSTALLATION TO BE REMOVED
- ⊙ EXISTING SIGNAL POST AND FOUNDATION TO BE REMOVED
- ⊙ EXISTING MAST ARM POLE AND FOUNDATION TO BE REMOVED
- ⊠ "E" EXISTING CONTROLLER AND FOUNDATION TO BE REMOVED
- ⊔ "E" EXISTING HANDHOLE TO BE REMOVED
- ⊔ "E" EXISTING DOUBLE HANDHOLE TO BE REMOVED
- ⊔ PEDESTRIAN SIGNAL TO BE REMOVED
- ⊙ EXISTING PEDESTRIAN PUSH-BUTTON TO BE REMOVED
- ⊙ EMERGENCY VEHICLE LIGHT DETECTOR TO BE REMOVED
- ⊙ CONFIRMATION BEACON TO BE REMOVED
- ⊔ "E" EXISTING HEAVY DUTY HANDHOLE TO BE REMOVED
- ⊙ EXISTING STEEL MAST ARM POLE AND FOUNDATION TO BE REMOVED

**STAGE CONSTRUCTION NOTES**

- THE GREEN AND YELLOW LEFT TURN ARROW SECTIONS ARE TO BE BAGGED IN CONSTRUCTION STAGES 1, 2 & 3. IF THE ROADWAY IS OPENED TO TRAFFIC PRIOR TO THE PERMANENT SIGNAL BEING PLACED IN OPERATION THE GREEN AND YELLOW ARROW SECTION ARE TO BE UNBAGGED AND THE LEFT TURN PHASE ARE TO BE PLACED IN OPERATION AT THAT TIME.
- PEDESTRIAN SIGNAL HEADS ARE TO BE INSTALLED IF THE ROADWAY IS OPENED TO TRAFFIC AND ALL SIDEWALKS HAVE BEEN CONSTRUCTED PRIOR TO THE PERMANENT SIGNAL BEING PLACED IN OPERATION.
- SIGNAL HEAD LOCATION FOR CONSTRUCTION STAGE 1
- SIGNAL HEAD LOCATION FOR CONSTRUCTION STAGE 2. NORTH BOUND SIGNAL HEADS FOR MacARTHUR DR. ARE TO BE BAGGED AND DISCONNECTED AT THE CONTROLLER.
- SIGNAL HEAD LOCATIONS FOR CONSTRUCTION STAGE 3. NORTH BOUND SIGNAL HEADS ARE TO BE BAGGED AND DISCONNECTED AT THE CONTROLLER.

**THE TRAFFIC SIGNAL CONTROL EQUIPMENT FOR THIS PROJECT SHALL BE "ECONOLITE" TO MATCH THE EXISTING ADJACENT SYSTEM.**

**GO** GANDHI AND ASSOCIATES, INC.  
ENGINEERS AND PLANNERS  
6035 N. NORTHWEST HIGHWAY  
SUITE 306  
CHICAGO, ILLINOIS 60631 TEL. (773) 774-5910

REVISIONS	
NAME	DATE

ILLINOIS DEPARTMENT OF TRANSPORTATION

**TEMPORARY TRAFFIC SIGNAL INSTALLATION AND REMOVAL PLAN**

ILLINOIS ROUTE 56 (BUTTERFIELD ROAD) AT MYRTLE AVENUE-MacARTHUR DRIVE

DATE: 9/03/04  
DRAWN BY: JEK  
DESIGNED BY: PKG  
CHECKED BY: PKG