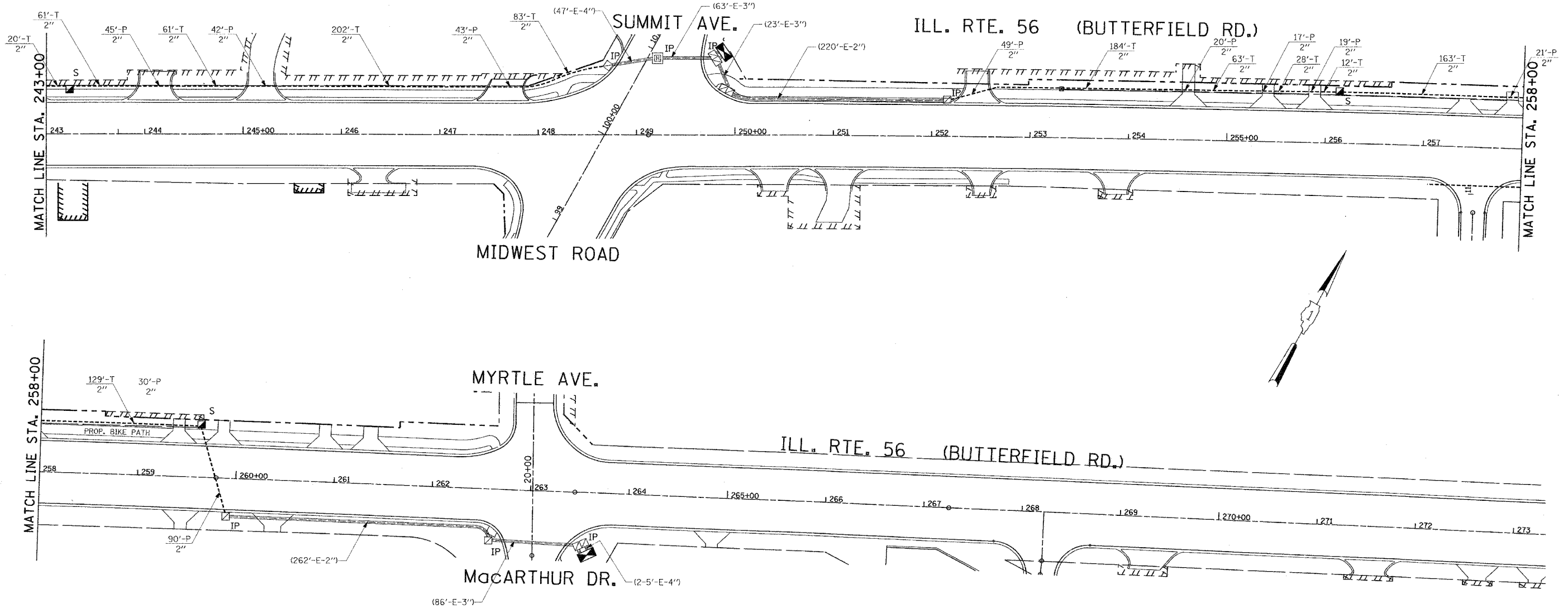


F.A.U. RTE.	SECTION	COUNTY	TOTAL SHEETS	SHEET NO.
3545	54 WRS-7	DUPAGE	235	121
STA.		TO STA.		
FED. ROAD DIST. NO.		ILLINOIS	FED. AID PROJECT	
D-91-386-01		CONTRACT NO. 62291		



INTERCONNECT PLAN LEGEND

	PROPOSED	EXISTING
CONTROLLER		
HANDHOLE		
DOUBLE HANDHOLE		
HEAVY DUTY HANDHOLE		
GALVANIZED STEEL CONDUIT IN TRENCH OR PUSHED		
DETECTOR LOOP		
COMMON TRENCH	CT	
UNIT DUCT	UD	
SYSTEM	S	
INTERSECTION	IP	I
TELEPHONE CONNECTION	T	T

THE TRAFFIC SIGNAL CONTROL EQUIPMENT FOR THIS PROJECT SHALL BE "ECONOLITE" TO MATCH THE EXISTING ADJACENT SYSTEM.

GO GANDHI AND ASSOCIATES, INC.
ENGINEERS AND PLANNERS
6035 ILNORTHWEST HIGHWAY
SUITE 306
CHICAGO, ILLINOIS 60631 TEL. (773) 774-5980

REVISIONS	
NAME	DATE

ILLINOIS DEPARTMENT OF TRANSPORTATION

INTERCONNECT PLAN
ILLINOIS ROUTE 56 (BUTTERFIELD ROAD)
AT SUMMIT AVENUE-MIDWEST ROAD
SHEET 2 OF 2

DATE: 9/03/04
DRAWN BY: JEK
DESIGNED BY: PKG
CHECKED BY: PKG

\$FILES
\$DATES
\$TIME\$