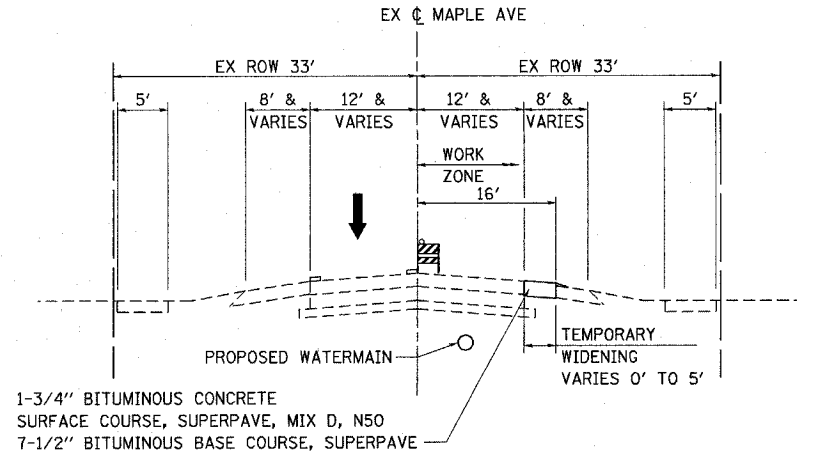
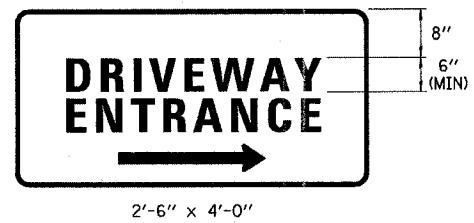


F.A.U. RTE.	SECTION	COUNTY	TOTAL SHEETS	SHEET NO.
1487	66R	DUPAGE	412	39
STA. 23+00.00		TO STA. 144+00.00		
FED. ROAD DIST. NO.		ILLINOIS	FED. AID PROJECT	
CONTRACT NO. 62376				



PROPOSED MOT PRE-STAGE MAPLE AVENUE / NAPERVILLE ROAD / CHICAGO AVENUE
 STA 20+00.00 TO STA 144+00.00
 LOOKING EASTBOUND



GREEN ON WHITE
 REFLECTIVE BACKGROUND
 1/2" BORDER

TWO SIGNS SHALL BE USED AT EACH COMMERCIAL DRIVEWAY AS DIRECTED BY THE ENGINEER.

TEMPORARY DRIVEWAY SIGN DETAIL

ONE-WAY DETOUR

A ONE-WAY DETOUR SHALL BE IMPLEMENTED THROUGHOUT THE ENTIRE IMPROVEMENT LIMITS AS SHOWN ON THE PLANS. THE ONE-WAY DETOUR SHALL ALLOW SUFFICIENT SPACE TO CONSTRUCT THE ROADWAY ONE HALF AT A TIME WITHOUT REQUIRING ADDITIONAL RIGHT OF WAY FOR STAGING PURPOSES BEYOND THAT SHOWN ON THE PLATS. ACCESS SHALL BE MAINTAINED TO ADJACENT PROPERTIES. WESTBOUND TRAFFIC WILL BE MAINTAINED THROUGH THE PROJECT LIMITS DURING CONSTRUCTION TO ALLOW SCHOOL BUSES TO DROP OFF CHILDREN AT CLARENDON HILLS MIDDLE SCHOOL. THE EXISTING EASTBOUND TRAFFIC SHALL BE DETOURED AT FAIRVIEW AVENUE NORTH TO OGDEN AVENUE, THEN EASTERLY TO MADISON STREET, THEN SOUTHERLY AROUND THE CONSTRUCTION WORK AREA. ALL SIGNS, BARRICADES, AND TEMPORARY STRIPING SHALL CONFORM TO THE MANUAL ON UNIFORM TRAFFIC CONTROL DEVICES (MUTCD).

PRE-STAGE

1. INSTALL ONE-WAY DETOUR. REROUTE EASTBOUND TRAFFIC AS SHOWN ON PLANS.
2. CONSTRUCT PROPOSED WATER MAIN AND SERVICE CONNECTIONS AS SHOWN ON THE PLANS OR AT LOCATIONS AS DIRECTED BY THE ENGINEER. REPLACE TRENCHED AREAS WITH TEMPORARY PAVEMENT, AS DETAILED ON WATER MAIN PLANS.
3. INSTALL TEMPORARY TRAFFIC SIGNALS AND TEMPORARY PAVEMENT WIDENING AS SHOWN ON THE PLANS.
4. REMOVE TREES AS SHOWN ON THE PLANS.

STAGE 1

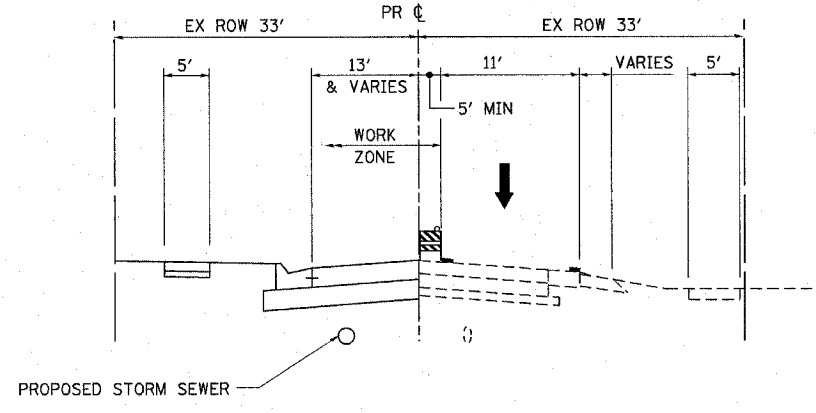
1. SHIFT WESTBOUND TRAFFIC TO SOUTH HALF OF MAPLE AND CHICAGO AVENUE.
2. INSTALL EROSION CONTROL MEASURES.
3. PROVIDE REMOVAL OPERATIONS, PROPOSED UTILITIES, ROADWAY PAVEMENT, DRIVEWAYS, AND SIDEWALK IN WORK ZONE.
4. MAINTAIN ONE-WAY DETOUR.

STAGE 2

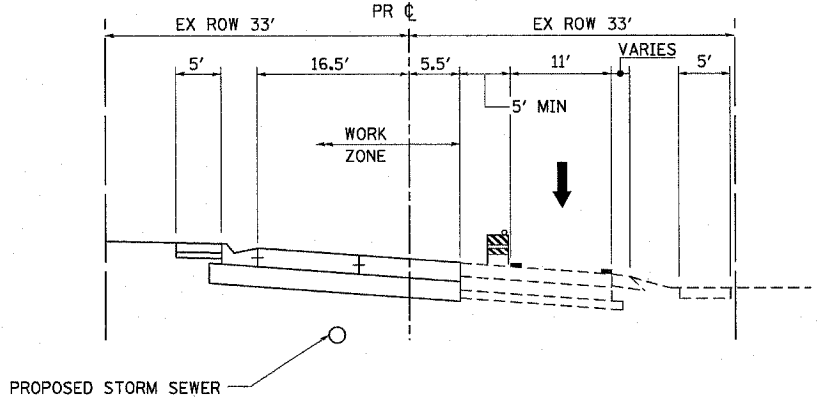
1. SHIFT WESTBOUND TRAFFIC TO NORTH HALF OF MAPLE AND CHICAGO AVENUE.
2. PROVIDE REMOVAL OPERATIONS, PROPOSED UTILITIES, ROADWAY PAVEMENT, DRIVEWAYS, AND SIDEWALK IN WORK ZONE.
3. MAINTAIN ONE-WAY DETOUR.

FINAL

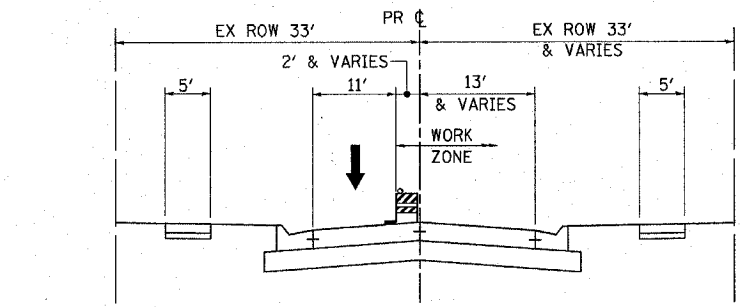
1. INSTALL FINAL PAVEMENT MARKINGS.
2. REMOVE ONE-WAY DETOUR. ROUTE EASTBOUND TRAFFIC BACK TO ROADWAY.
3. REMOVE ALL TEMPORARY TRAFFIC CONTROL MEASURES AND TEMPORARY TRAFFIC SIGNALS.
4. INSTALL ALL LANDSCAPING ITEMS.
5. REMOVE TEMPORARY EROSION CONTROL MEASURES.



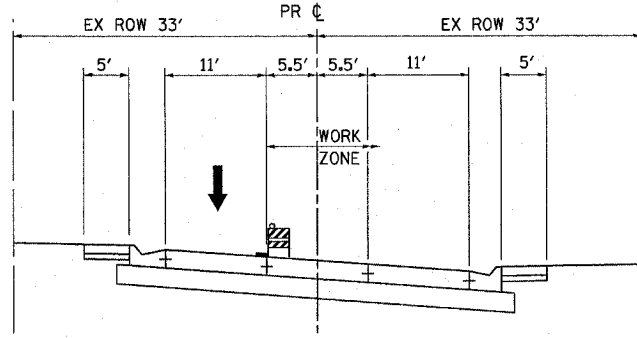
PROPOSED MOT STAGE 1 MAPLE AVENUE / NAPERVILLE ROAD / CHICAGO AVENUE
 STA 20+00.00 TO STA 65+40.67
 STA 66+98.55 TO STA 144+00.00
 LOOKING EASTBOUND



PROPOSED MOT STAGE 1 MAPLE AVENUE / NAPERVILLE ROAD / CHICAGO AVENUE
 STA 65+40.67 TO STA 66+98.85
 LOOKING EASTBOUND



PROPOSED MOT STAGE 2 MAPLE AVENUE / NAPERVILLE ROAD / CHICAGO AVENUE
 STA 20+00.00 TO STA 65+40.67
 STA 66+98.55 TO STA 144+00.00
 LOOKING EASTBOUND



PROPOSED MOT STAGE 2 MAPLE AVENUE / NAPERVILLE ROAD / CHICAGO AVENUE
 STA 65+40.67 TO STA 66+98.85
 LOOKING EASTBOUND

LEGEND:

- - - EXISTING PAVEMENT MARKING
- - - TEMPORARY PAVEMENT MARKING OR PAVEMENT MARKING TAPE, TYPE III
- ▨ TYPE II BARRICADES OR DRUMS @ 50' C-C WITH STEADY BURN LIGHTS
- ⊙ VERTICAL PANELS WITH STEADY BURN LIGHTS @ 50' C-C
- ➔ TRAFFIC DIRECTION

REVISIONS	
NAME	DATE

Illinois Firm Registration No. 04-00533

Stanley Consultants Inc.
 850 West Higgins Road, Suite 130
 Chicago, Illinois 60637-2801
 www.stanleyconsultants.com

ILLINOIS DEPARTMENT OF TRANSPORTATION

**SUGGESTED MAINTENANCE OF TRAFFIC
 MAPLE AVENUE / CHICAGO AVENUE
 TYPICAL SECTIONS & NOTES**

SCALE: NONE
 DATE: 04-JAN-2005

DRAWN BY: E.D.
 CHECKED BY: G.T.