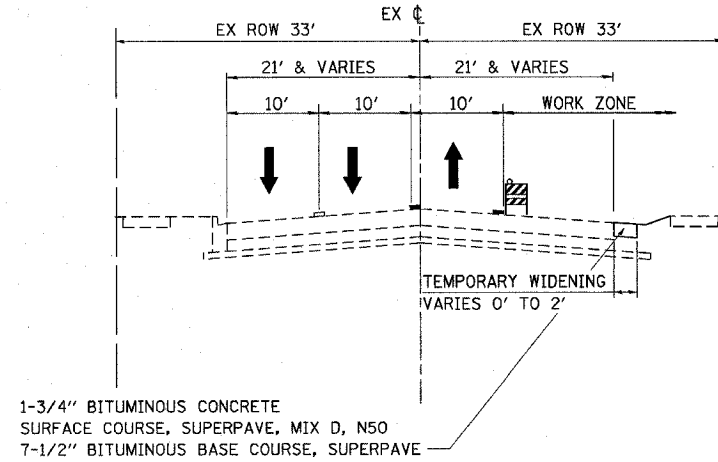
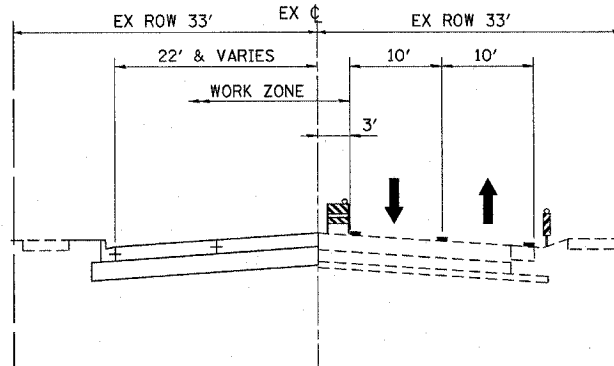


F.A.U. R.T.E.	SECTION	COUNTY	TOTAL SHEETS	SHEET NO.
1487	66R	DuPAGE	412	40
STA. 23+00.00	TO STA. 144+00.00			
FED. ROAD DIST. NO.	ILLINOIS	FED. AID PROJECT		
CONTRACT NO. 62376				



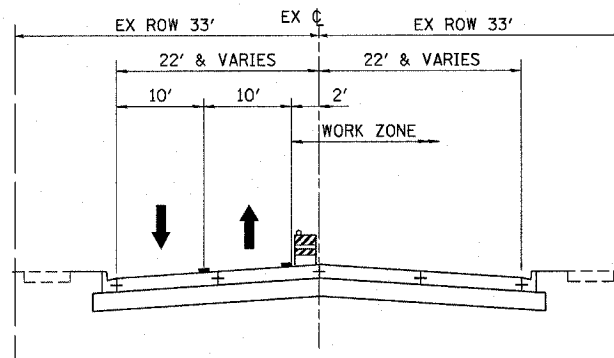
PROPOSED MOT PRE-STAGE CASS AVENUE

STA 15+35.66 TO STA 24+00.00



PROPOSED MOT STAGE 1 CASS AVENUE

STA 15+35.66 TO STA 24+00.00



PROPOSED MOT STAGE 2 CASS AVENUE

STA 15+35.66 TO STA 24+00.00

CASS AVENUE MOT STAGE DESCRIPTIONS

PRE-STAGE

1. SHIFT TRAFFIC AS SHOWN ON PLANS.
2. INSTALL TEMPORARY TRAFFIC SIGNALS AND TEMPORARY PAVEMENT WIDENING AS SHOWN ON THE PLANS.
3. REMOVE TREES AS SHOWN ON THE PLANS.

STAGE 1

1. SHIFT TRAFFIC TO EAST HALF OF CASS AVENUE.
2. INSTALL EROSION CONTROL MEASURES.
3. PROVIDE REMOVAL OPERATIONS, PROPOSED UTILITIES, ROADWAY PAVEMENT, DRIVEWAYS, AND SIDEWALK IN WORK ZONE.
4. MILL AND RESURFACE EXISTING WEST HALF OF CASS AVENUE FROM STA 15+35.66 TO STA 17+59.66

STAGE 2

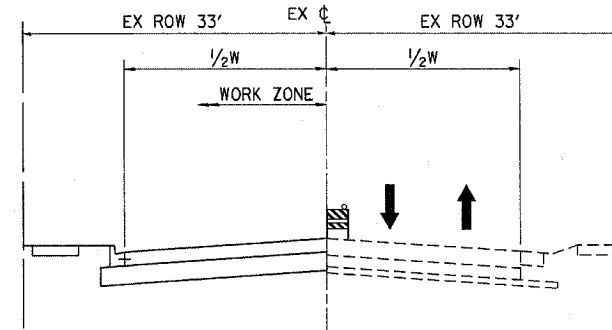
1. SHIFT TRAFFIC TO WEST HALF OF CASS AVENUE.
2. PROVIDE REMOVAL OPERATIONS, PROPOSED UTILITIES, ROADWAY PAVEMENT, DRIVEWAYS, AND SIDEWALK IN WORK ZONE.
3. MILL AND RESURFACE EXISTING EAST HALF OF CASS AVENUE FROM STA 15+35.66 TO STA 17+59.66

FINAL

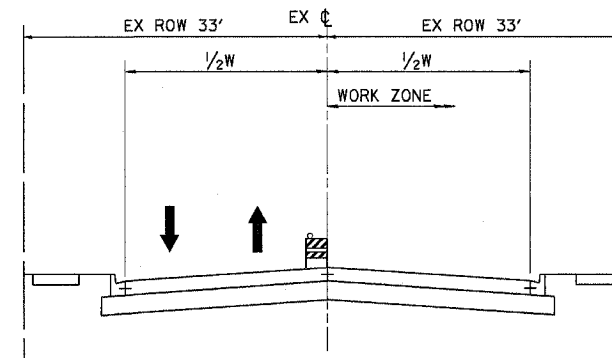
1. INSTALL FINAL PAVEMENT MARKINGS.
2. REMOVE ALL TEMPORARY TRAFFIC CONTROL MEASURES.
3. INSTALL ALL LANDSCAPING ITEMS.
4. REMOVE TEMPORARY EROSION CONTROL MEASURES.

LEGEND:

- EXISTING PAVEMENT MARKING
- - - TEMPORARY PAVEMENT MARKING OR PAVEMENT MARKING TAPE, TYPE III
- ▨ TYPE II BARRICADES OR DRUMS @ 50' C-C WITH STEADY BURN LIGHTS
- ⊥ VERTICAL PANELS WITH STEADY BURN LIGHTS @ 50' C-C
- ➔ TRAFFIC DIRECTION



PROPOSED MOT STAGE 1 SIDE STREETS



PROPOSED MOT STAGE 2 SIDE STREET

SIDE STREET MOT STAGE DESCRIPTIONS

STAGE 1

1. REMOVE TREES AS SHOWN ON THE PLANS.
2. INSTALL EROSION CONTROL MEASURES.
3. SHIFT TRAFFIC
4. PROVIDE REMOVAL OPERATIONS, PROPOSED UTILITIES, ROADWAY PAVEMENT, DRIVEWAYS, AND SIDEWALK IN WORK ZONE.

STAGE 2

1. SHIFT TRAFFIC
2. PROVIDE REMOVAL OPERATIONS, PROPOSED UTILITIES, ROADWAY PAVEMENT, DRIVEWAYS, AND SIDEWALK IN WORK ZONE.

FINAL

1. INSTALL FINAL PAVEMENT MARKINGS.
2. REMOVE ALL TEMPORARY TRAFFIC CONTROL MEASURES.
3. INSTALL ALL LANDSCAPING ITEMS.
4. REMOVE TEMPORARY EROSION CONTROL MEASURES.

REVISIONS	
NAME	DATE

Illinois Firm Registration No. 04-00533

850 West Higgins Road, Suite 130
Chicago, Illinois 60638-2801
www.stanleyconsultants.com

ILLINOIS DEPARTMENT OF TRANSPORTATION

**SUGGESTED MAINTENANCE OF TRAFFIC
CASS AVENUE AND SIDE STREETS
TYPICAL SECTIONS & NOTES**

SCALE: NONE
DATE: 04-JAN-2005

DRAWN BY: E.D.
CHECKED BY: G.T.