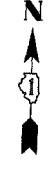
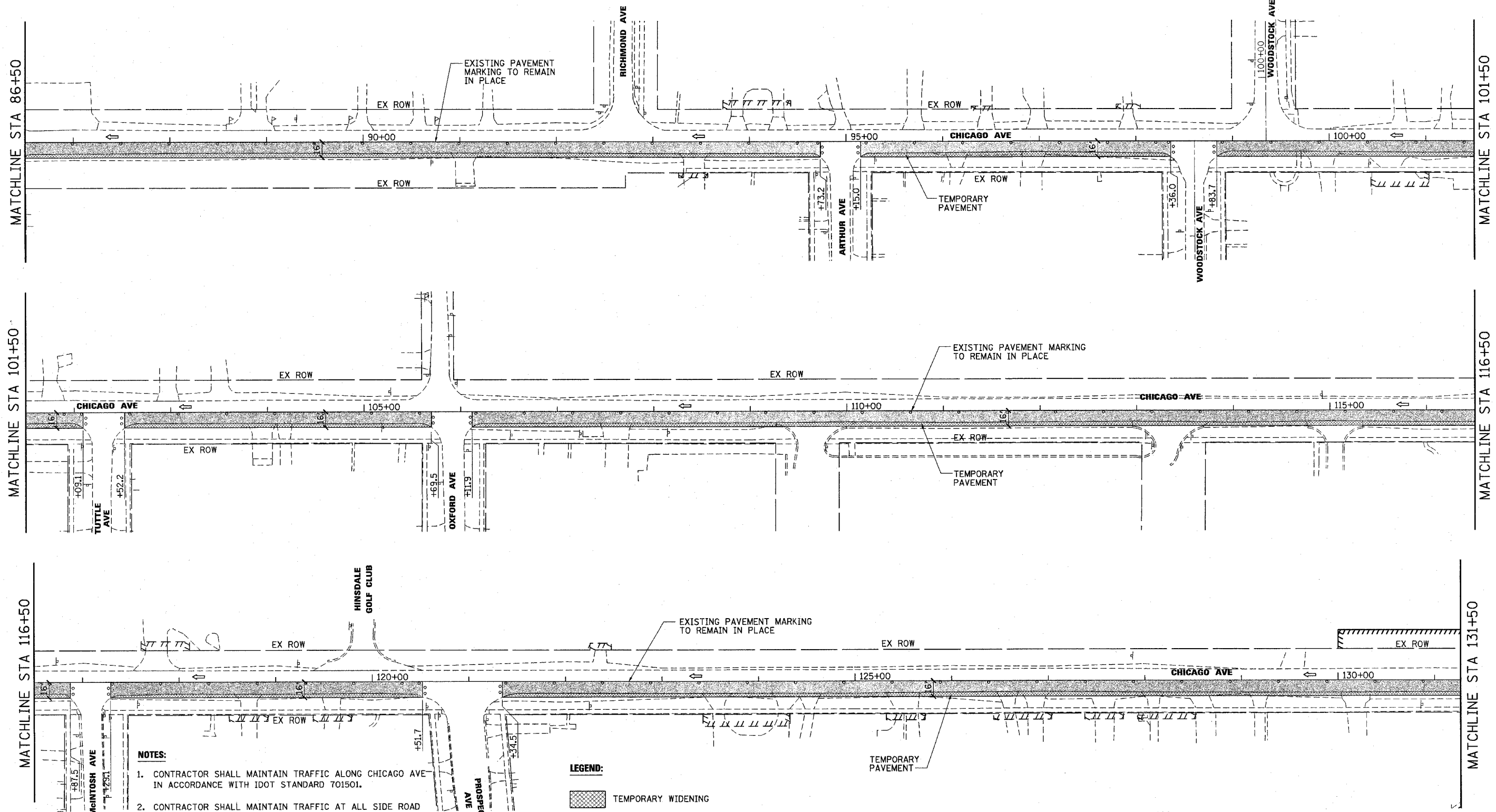


F.A.U. RTE.	SECTION	COUNTY	TOTAL SHEETS	SHEET NO.
1487	66R	DuPAGE	4/12	43
STA. 23+00.00		TO STA. 144+00.00		
FED. ROAD DIST. NO.	ILLINOIS	FED. AID PROJECT		
CONTRACT NO. 62376				

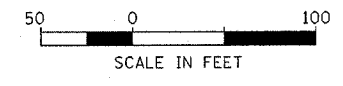


NOTES:

1. CONTRACTOR SHALL MAINTAIN TRAFFIC ALONG CHICAGO AVE IN ACCORDANCE WITH IDOT STANDARD 701501.
2. CONTRACTOR SHALL MAINTAIN TRAFFIC AT ALL SIDE ROAD INTERSECTIONS IN ACCORDANCE WITH IDOT STANDARD 701701 AND IDOT DISTRICT ONE DETAILS, "TRAFFIC CONTROL AND PROTECTION FOR SIDEROADS, INTERSECTIONS AND DRIVEWAYS" AND "TRAFFIC CONTROL AND PROTECTION AT TURN BAYS (TO REMAIN OPEN TO TRAFFIC)".
3. SEE DETOUR PLAN FOR ADDITIONAL INFORMATION AND SIGNING.
4. SIGNS SHALL BE PLACED AT ALL COMMERCIAL DRIVEWAYS DURING CONSTRUCTION TO IDENTIFY OPENING LOCATIONS. SEE TEMPORARY DRIVEWAY SIGN DETAIL.

LEGEND:

- TEMPORARY WIDENING
- WORKING AREA, PRE-STAGE
- TRAFFIC DIRECTION
- BARRICADES OR DRUMS @ 50' C-C WITH STEADY BURN LIGHTS
- VERTICAL PANELS W/STEADY BURN LIGHT @ 50' C-C
- TYPE III BARRICADE W/2 STEADY BURN LIGHTS
- TRAFFIC CONTROL SIGNS
- ARROW BOARD



Illinois Firm Registration No. 04-006533

Stanley Consultants INC.
 650 West Higgins Road, Suite 130
 Chicago, Illinois 60631-2863
 www.stanleygroup.com

REVISIONS	
NAME	DATE

ILLINOIS DEPARTMENT OF TRANSPORTATION

**SUGGESTED MAINTENANCE OF TRAFFIC PLAN
 MAPLE AVENUE / CHICAGO AVENUE
 PRE-STAGE
 SHEET 3 OF 4**

SCALE: 1"=50'
 DATE: 14-JAN-2005

DRAWN BY: E.D.
 CHECKED BY: G.T.