

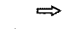
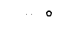




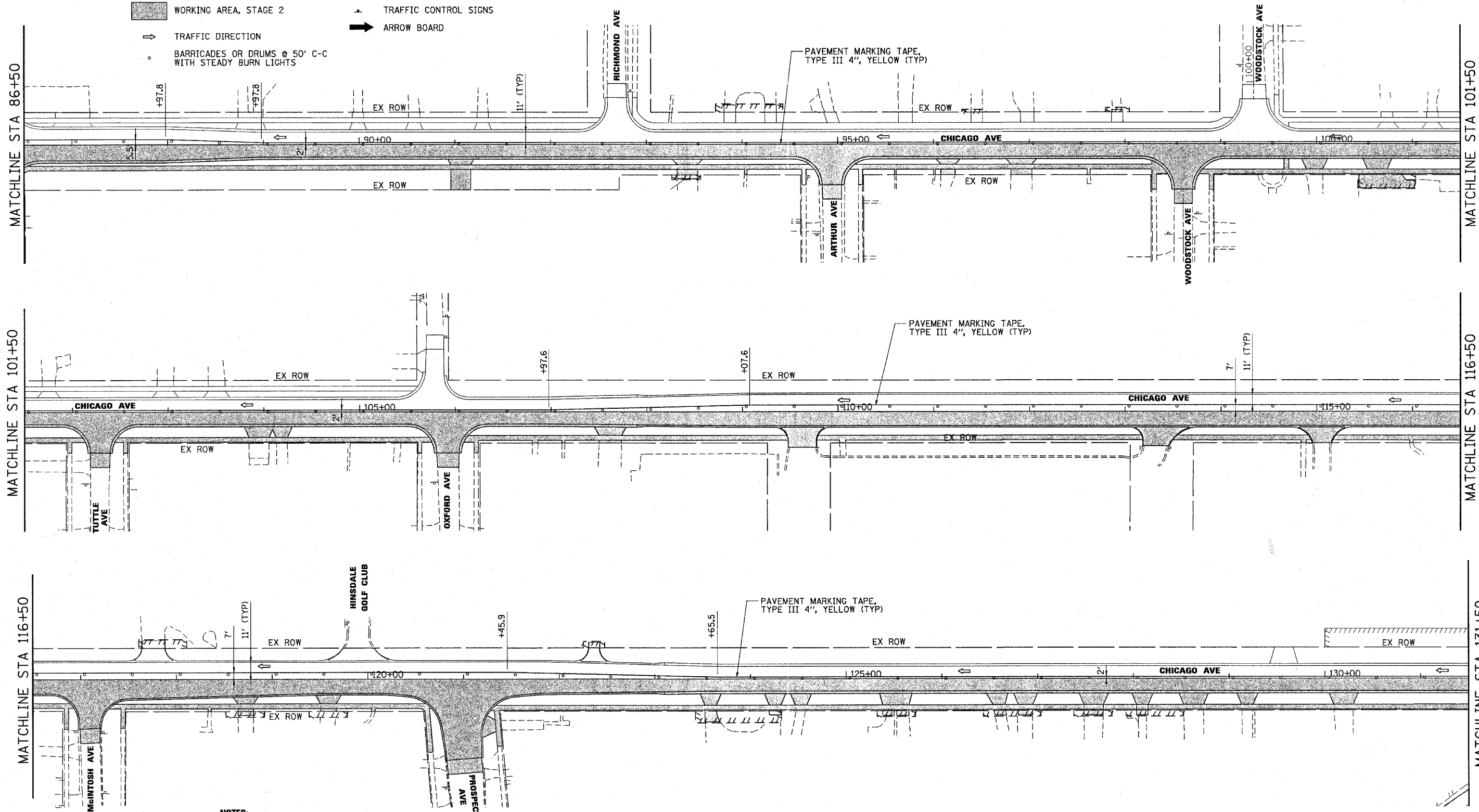


F.A.U. RTE.	SECTION	COUNTY	TOTAL SHEETS	SHEET NO.
1487	66R	DUPAGE	412	57
STA. 23+00.00		TO STA. 144+00.00		
FED. ROAD DIST. NO.	ILLINOIS	FED. AID PROJECT		
CONTRACT NO. 62376				

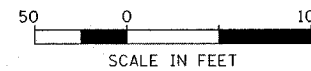
**LEGEND:**

-  TEMPORARY WIDENING
-  WORKING AREA, STAGE 2
-  TRAFFIC DIRECTION
-  BARRICADES OR DRUMS @ 50' C-C WITH STEADY BURN LIGHTS
-  VERTICAL PANELS W/STEADY BURN LIGHT @ 50' C-C
-  TYPE III BARRICADE W/2 STEADY BURN LIGHTS
-  TRAFFIC CONTROL SIGNS
-  ARROW BOARD



**NOTES:**

1. CONTRACTOR SHALL MAINTAIN TRAFFIC ALONG CHICAGO AVE IN ACCORDANCE WITH IDOT STANDARD 701501.
2. CONTRACTOR SHALL MAINTAIN TRAFFIC AT ALL SIDE ROAD INTERSECTIONS IN ACCORDANCE WITH IDOT STANDARD 701701 AND IDOT DISTRICT ONE DETAILS, "TRAFFIC CONTROL AND PROTECTION FOR SIDEROADS, INTERSECTIONS AND DRIVEWAYS" AND "TRAFFIC CONTROL AND PROTECTION AT TURN BAYS (TO REMAIN OPEN TO TRAFFIC)".
3. SEE DETOUR PLAN FOR ADDITIONAL INFORMATION AND SIGNING.
4. SIGNS SHALL BE PLACED AT ALL COMMERCIAL DRIVEWAYS DURING CONSTRUCTION TO IDENTIFY OPENING LOCATIONS. SEE TEMPORARY DRIVEWAY SIGN DETAIL.



Illinois Firm Registration No. 04-00533



**Stanley Consultants INC.**  
 850 West Higgins Road, Suite 730  
 Chicago, Illinois 60630-2808  
 www.stanleygroup.com

REVISIONS	
NAME	DATE

ILLINOIS DEPARTMENT OF TRANSPORTATION

**SUGGESTED MAINTENANCE OF TRAFFIC PLAN  
 MAPLE AVENUE / CHICAGO AVENUE  
 STAGE 2  
 SHEET 3 OF 4**

SCALE: 1"=50'  
 DATE: 14-JAN-2005

DRAWN BY: E.D.  
 CHECKED BY: G.T.