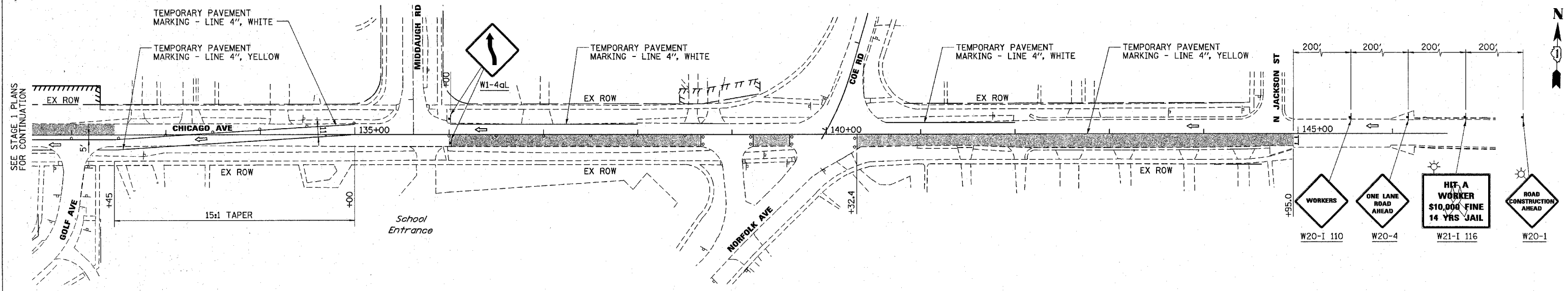


F.A.U. RTE.	SECTION	COUNTY	TOTAL SHEETS	SHEET NO.
1487	66R	DUPAGE	412	53
STA. 23+00.00		TO STA. 144+00.00		
FED. ROAD DIST. NO.		ILLINOIS	FED. AID PROJECT	
CONTRACT NO. 62376				



SUGGESTED MAINTENANCE OF TRAFFIC SUB-STAGE PLAN

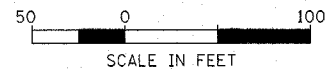
THIS TRAFFIC PLAN IS FOR LIMITED USE DURING INSTALLATION OF THE PROPOSED STORM SEWER. THE DURATION SHALL BE LIMITED TO AFTER THE PRE-STAGE AND PRIOR TO STAGE 1 ACTIVITIES.

NOTES:

1. CONTRACTOR SHALL MAINTAIN TRAFFIC ALONG CHICAGO AVE IN ACCORDANCE WITH IDOT STANDARD 701501.
2. CONTRACTOR SHALL MAINTAIN TRAFFIC AT ALL SIDE ROAD INTERSECTIONS IN ACCORDANCE WITH IDOT STANDARD 701701 AND IDOT DISTRICT ONE DETAILS, "TRAFFIC CONTROL AND PROTECTION FOR SIDEROADS, INTERSECTIONS AND DRIVEWAYS" AND "TRAFFIC CONTROL AND PROTECTION AT TURN BAYS (TO REMAIN OPEN TO TRAFFIC)".
3. SEE DETOUR PLAN FOR ADDITIONAL INFORMATION AND SIGNING.
4. CONTRACTOR SHALL MAINTAIN TRAFFIC ALONG CASS AVENUE IN ACCORDANCE WITH IDOT STANDARD 701606.
5. SIGNS SHALL BE PLACED AT ALL COMMERCIAL DRIVEWAYS DURING CONSTRUCTION TO IDENTIFY OPENING LOCATIONS. SEE TEMPORARY DRIVEWAY SIGN DETAIL.

LEGEND:

- TEMPORARY WIDENING
- WORKING AREA
- TRAFFIC DIRECTION
- BARRICADES OR DRUMS @ 50' C-C WITH STEADY BURN LIGHTS
- VERTICAL PANELS W/STEADY BURN LIGHT @ 50' C-C
- TYPE III BARRICADE W/2 STEADY BURN LIGHTS
- TRAFFIC CONTROL SIGNS
- ARROW BOARD



REVISIONS	
NAME	DATE

ILLINOIS DEPARTMENT OF TRANSPORTATION

**SUGGESTED MAINTENANCE OF TRAFFIC PLAN
MAPLE AVENUE / CHICAGO AVENUE
LIMITED USE STAGE
SHEET 1 OF 1**

SCALE: 1"=50'
DATE: 31-MAR-2005

DRAWN BY: E.D.
CHECKED BY: G.T.

Illinois Firm Registration No. 64-00533

Stanley Consultants INC.

850 West Higgins Road, Suite 130
Chicago, Illinois 60638-2800
www.stanleygroup.com