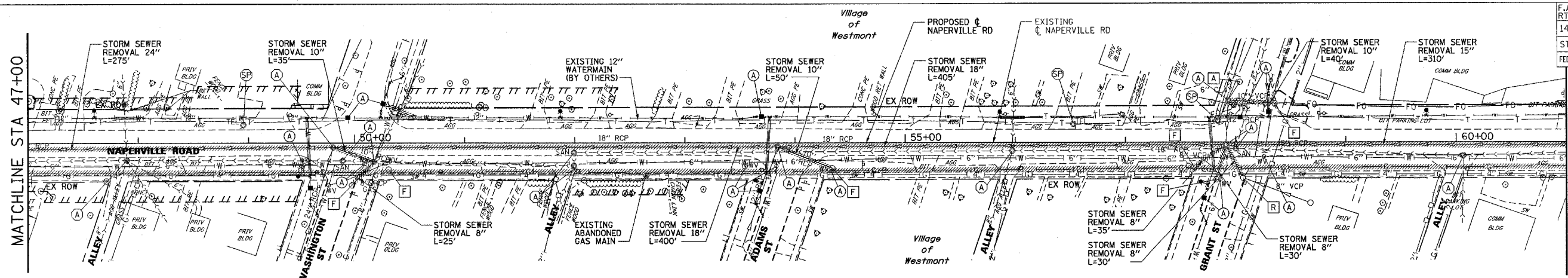
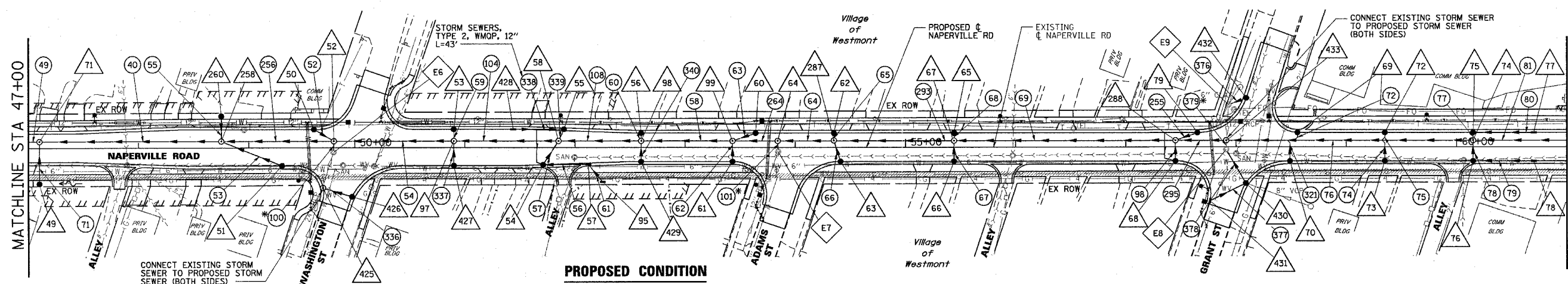


F.A.U. RTE.	SECTION	COUNTY	TOTAL SHEETS	SHEET NO.
1487	66R	DUPAGE	412	60
STA. 23+00.00		TO STA. 144+00.00		
FED. ROAD DIST. NO.		ILLINOIS FED. AID PROJECT		
CONTRACT NO. 62376				

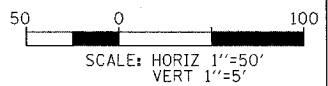


**EXISTING CONDITION**



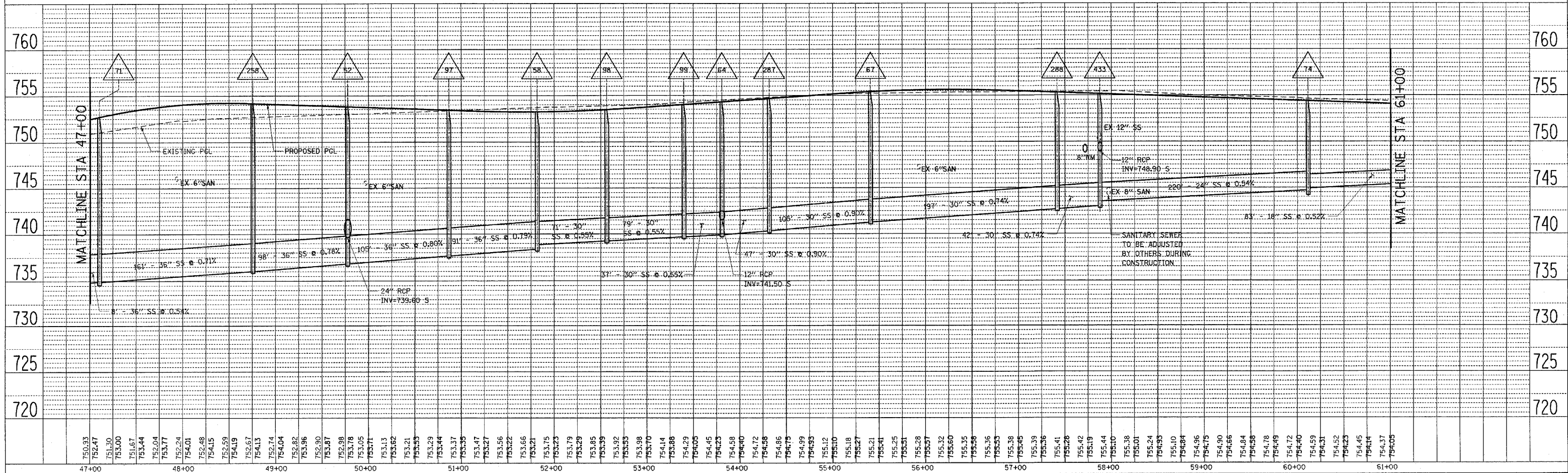
**PROPOSED CONDITION**

**LEGEND:**  
 WMQP - WATER MAIN QUALITY PIPE  
 \*CONNECT EXISTING STORM SEWER TO PROPOSED STORM SEWER (BOTH SIDES)



PLAN  
 SURVEYED  
 PLOTTED  
 CHECKED  
 DATE  
 BY  
 NO.

PROFILE  
 SURVEYED  
 PLOTTED  
 CHECKED  
 DATE  
 BY  
 NO.



47+00 48+00 49+00 50+00 51+00 52+00 53+00 54+00 55+00 56+00 57+00 58+00 59+00 60+00 61+00