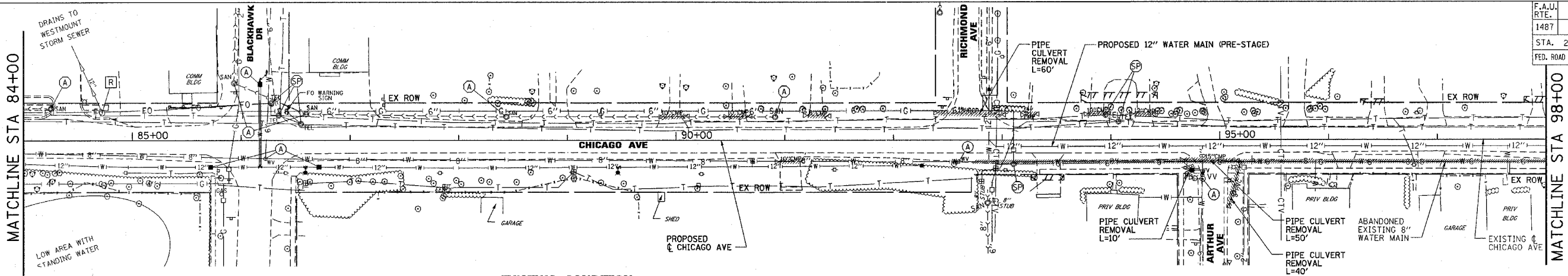
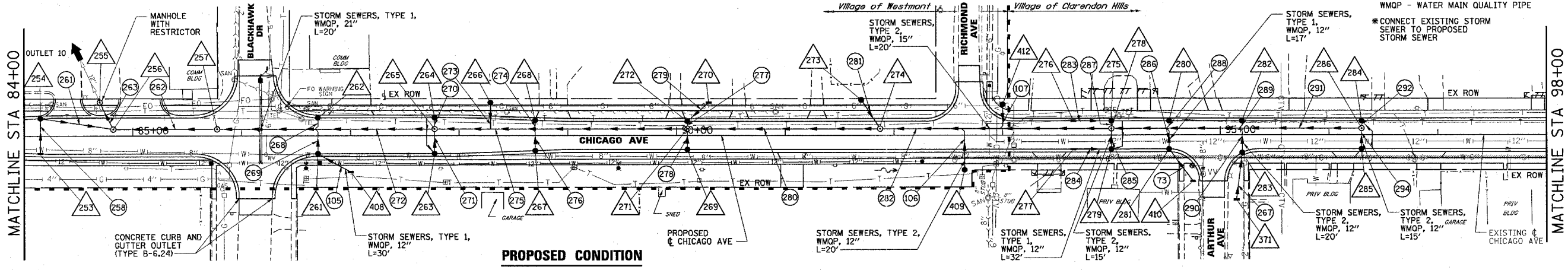


F.A.U. RTE.	SECTION	COUNTY	TOTAL SHEETS	SHEET NO.
1487	66R	DuPAGE	412	63
STA. 23+00.00		TO STA. 144+00.00		
FED. ROAD DIST. NO.		ILLINOIS FED. AID PROJECT		CONTRACT NO. 62376

DATE	BY
SURVEYED	
CHECKED	
ALIGNED	
CHECKED	
NOTE BOOK	
NO.	
DATE	
BY	
SURVEYED	
CHECKED	
ALIGNED	
CHECKED	
NOTE BOOK	
NO.	



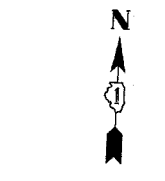
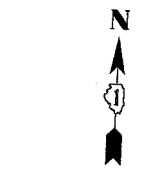
**EXISTING CONDITION**



**PROPOSED CONDITION**

**LEGEND:**

- WMQP - WATER MAIN QUALITY PIPE
- \*CONNECT EXISTING STORM SEWER TO PROPOSED STORM SEWER



SCALE: HORIZ 1"=50'  
VERT 1"=5'

DATE	BY
PROFILE	
CHECKED	
STRUCTURE	
NOTATION	
CIRCD	
NOTE BOOK	
NO.	

