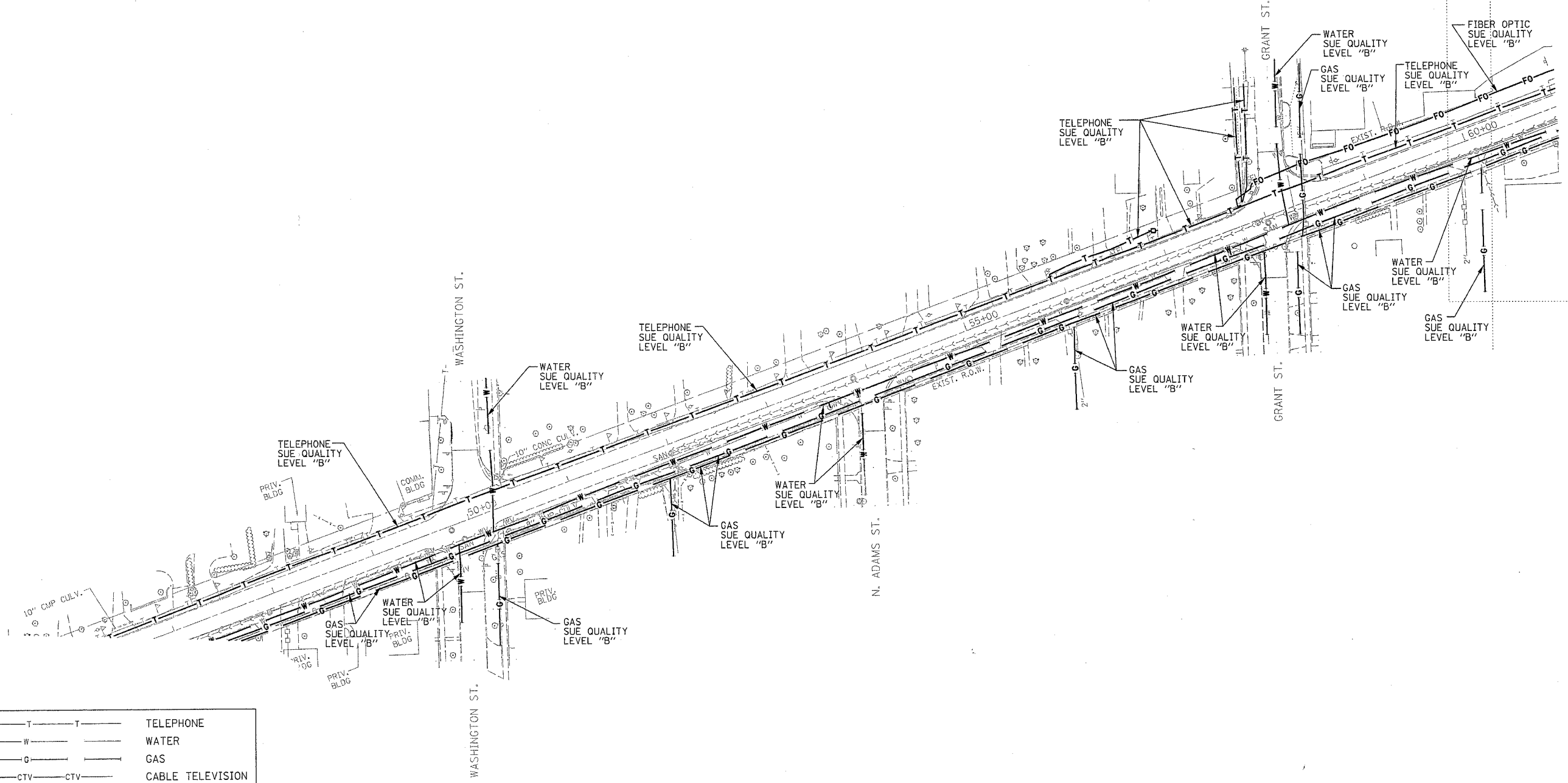
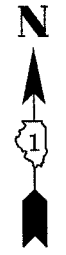



F.A.U. RTE.	SECTION	COUNTY	TOTAL SHEETS	SHEET NO.
1487	66R	Dupage	418	139
STA. 47+00.		TO STA. 60+50		
FED. ROAD DIST. NO.	ILLINOIS	FED. AID PROJECT		
CONTRACT NO. 62376				



— T — T —	TELEPHONE
— W — W —	WATER
— G — G —	GAS
— CTV — CTV —	CABLE TELEVISION
— FO — FO —	FIBER OPTIC
— E — E —	ELECTRIC
⊙	TEST HOLE

TBE GROUP, INC.
 CIVIL ENGINEERING * TRANSPORTATION * ENVIRONMENTAL
 * PLANNING * UTILITY ENGINEERING * LOCATING
 SOUTHERN REGION: FL, GA, SC, NC
 NORTHERN REGION: IL, IN, MI, OH, MD, NJ, NY
 PA, VA, CANADA
 WESTERN REGION: AZ, NV, NM, TX, CA, OR, UT, WA
 IL09500165, IL09500166
 TBE SUE PAGE NO: 4 of 11
 Checked by: *[Signature]*
 SUE Quality Level "A" : Test Holes
 SUE Quality Level "B" : Designating

Utilities shown on these plans as depicted in the legend have been investigated by TBE Group, Inc in accordance with SUE Industry Standards. All other information shown has been provided to TBE Group, Inc by others.

 205 W. WACKER DRIVE SUITE 1020 CHICAGO, IL 60606 (312) 704-1970	REVISIONS		ILLINOIS DEPARTMENT OF TRANSPORTATION SUE Investigation of Underground Utilities CHICAGO AVE./MAPLE AVE. FROM FAIRVIEW AVE. TO IL RTE. 83 (KINGERY HWY.) CONTRACT NO. 62376 DATE SQL "B": 9/17/03
	NAME	DATE	
		DRAWN BY : KLC SCALE : 1" = 50'	