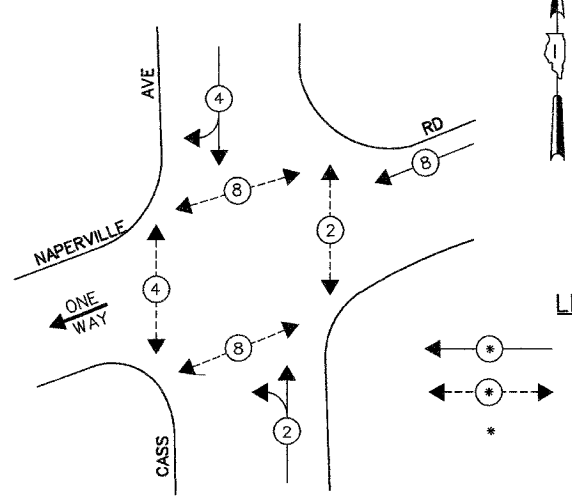


F.A.U. RTE.	SECTION	COUNTY	TOTAL SHEETS	SHEET NO.
1487	66R	DuPAGE	412	144
STA. 23+00		TO STA. 144+00		
FED. ROAD DIST. NO.	ILLINOIS	FED. AID PROJECT		
CONTRACT NO. 62376				

TEMPORARY CABLE DIAGRAM LEGEND

- TEMPORARY TRAFFIC SIGNAL SECTION OR PEDESTRIAN SIGNAL SECTION 12" (300mm)
- TEMPORARY CONTROLLER CABINET
- TEMPORARY SERVICE INSTALLATION
- INDICATES NUMBER OF CONDUCTORS IN CABLE. ALL CONDUCTORS TO BE NUMBER 14 AWG WIRE UNLESS OTHERWISE NOTED.
- EMERGENCY VEHICLE LIGHT DETECTOR
- CONFIRMATION BEACON
- VEHICLE DETECTOR, INDUCTION LOOP
- PEDESTRIAN PUSHBUTTON DETECTOR
- 12" (300mm) PEDESTRIAN SIGNAL SECTION
- MICROWAVE VEHICLE SENSOR

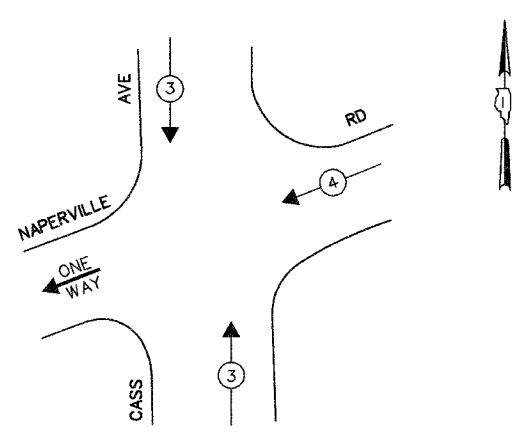
CONTROLLER SEQUENCE



- LEGEND**
- DUAL ENTRY PHASE
 - PEDESTRIAN PHASE
 - * NUMBER REFERS TO ASSOCIATED PHASE

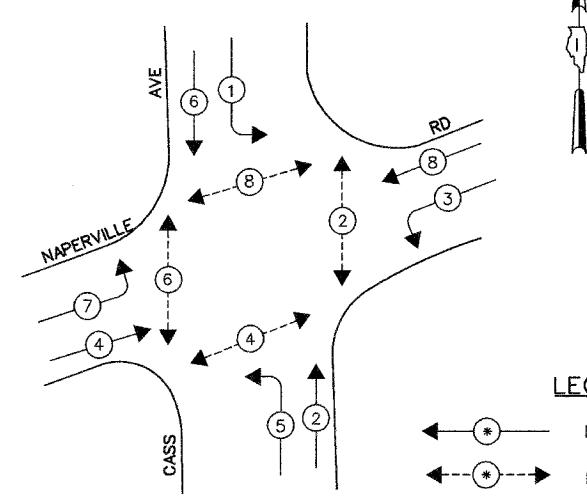
TEMPORARY PHASE DESIGNATION DIAGRAM FOR CONSTRUCTION STAGES PRE-STAGE 1, STAGE 1, & STAGE 2

TEMPORARY EMERGENCY VEHICLE PREEMPTION SEQUENCE



TEMPORARY EMERGENCY VEHICLE PREEMPTORS		
EMERGENCY VEHICLE PREEMPTOR	3	4
MOVEMENT	↓ ↑	←

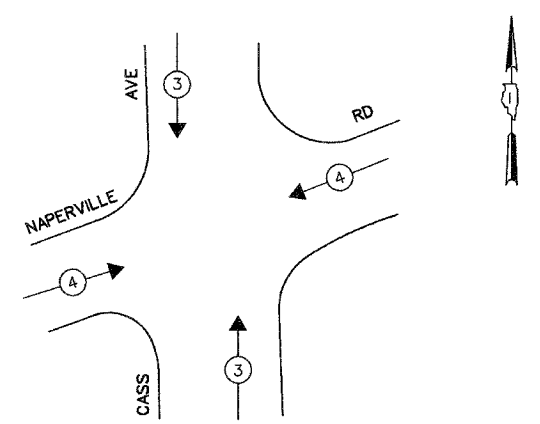
CONTROLLER SEQUENCE



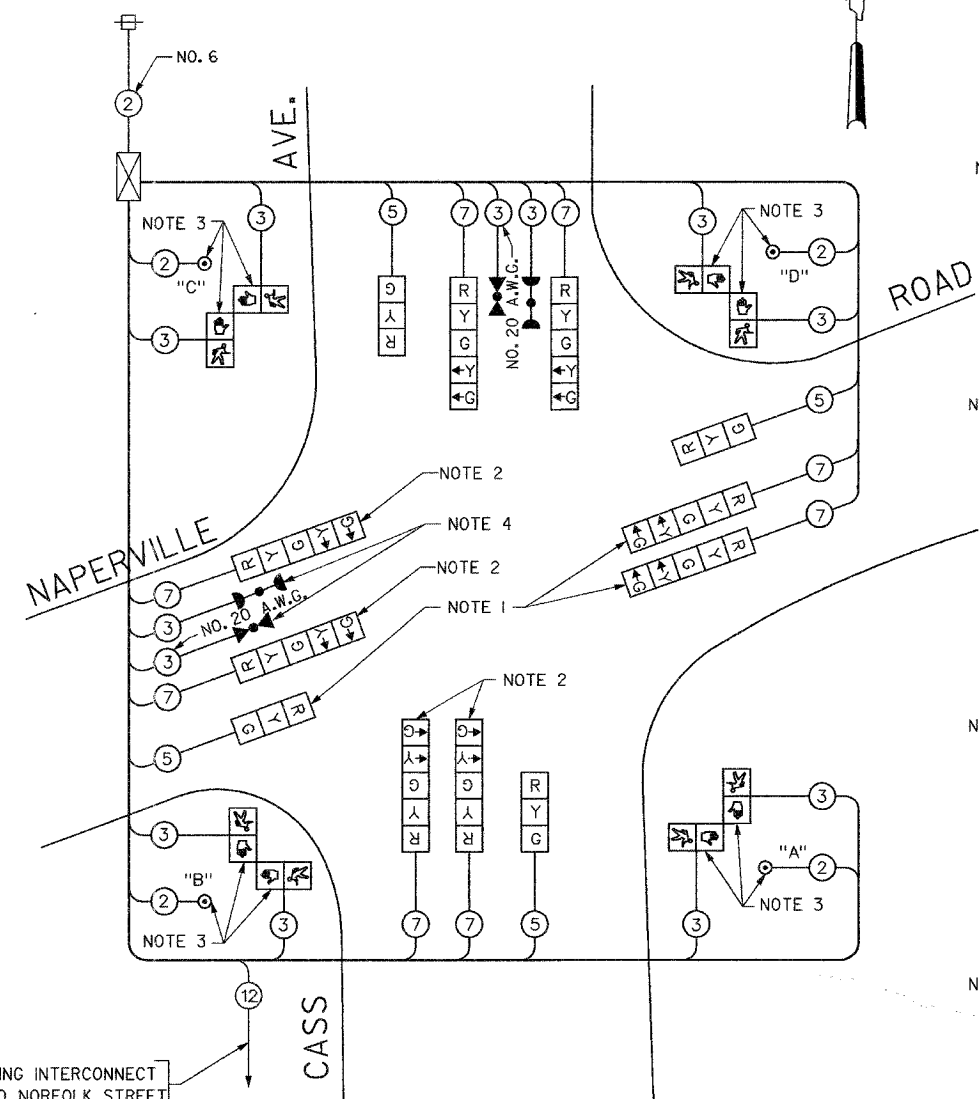
- LEGEND**
- DUAL ENTRY PHASE
 - PEDESTRIAN PHASE
 - * NUMBER REFERS TO ASSOCIATED PHASE

PHASE DESIGNATION DIAGRAM FOR POST-CONSTRUCTION STAGE 2

EMERGENCY VEHICLE PREEMPTION SEQUENCE



PROPOSED EMERGENCY VEHICLE PREEMPTORS		
EMERGENCY VEHICLE PREEMPTOR	3	4
MOVEMENT	↓ ↑	←



- NOTE 1:** THE SIGNAL HEADS FOR THE EASTBOUND DIRECTION OF TRAFFIC SHALL BE DISCONNECTED AND BAGGED DURING THE PRE-STAGE 1, STAGE 1, AND STAGE 2 CONSTRUCTION. THESE SIGNAL HEADS SHALL BE ACTIVATED AFTER ALL THE PROPOSED PAVEMENT GEOMETRICS ARE IN PLACE AND TWO-WAY TRAFFIC MOVEMENT IS RESTORED ON NAPERVILLE ROAD PRIOR TO ACTIVATION OF THE NEW PERMANENT SIGNALS. THE CONTRACTOR CAN, HOWEVER, INSTALL THESE SIGNAL HEADS PRIOR TO COMPLETION OF STAGE 2 CONSTRUCTION AS DIRECTED BY THE ENGINEER.
- NOTE 2:** THE LEFT TURN ARROW INDICATIONS FOR SOUTHBOUND TO EASTBOUND AND WESTBOUND TO SOUTHBOUND LEFT TURN MOVEMENT SHALL BE DISCONNECTED AND BAGGED FOR PRE-STAGE 1, STAGE 1, AND STAGE 2 CONSTRUCTION. THESE SIGNAL SECTIONS SHALL BE CONNECTED, UNBAGGED, AND THE LEFT TURN MOVEMENT SHALL BE ACTIVATED AFTER ALL THE PROPOSED PAVEMENT GEOMETRICS ARE IN PLACE AND TWO-WAY TRAFFIC MOVEMENT IS RESTORED ON NAPERVILLE ROAD PRIOR TO ACTIVATION OF THE NEW PERMANENT SIGNALS. THE CONTRACTOR CAN, HOWEVER, INSTALL THESE SIGNAL SECTIONS PRIOR TO COMPLETION OF STAGE 2 CONSTRUCTION AS DIRECTED BY THE ENGINEER.
- NOTE 3:** THE PEDESTRIAN SIGNAL HEADS AND PUSH-BUTTONS SHALL BE DISCONNECTED AND BAGGED FOR PRE-STAGE 1, STAGE 1, AND STAGE 2 CONSTRUCTION. THESE SIGNAL HEADS AND PUSH-BUTTONS SHALL BE ACTIVATED AFTER ALL THE PROPOSED PAVEMENT GEOMETRICS ARE IN PLACE AND TWO-WAY TRAFFIC MOVEMENT IS RESTORED ON NAPERVILLE ROAD PRIOR TO ACTIVATION OF THE NEW PERMANENT SIGNALS. THE CONTRACTOR CAN INSTALL THESE SIGNAL HEADS AND PUSH-BUTTONS PRIOR TO COMPLETION OF STAGE 2 CONSTRUCTION AS DIRECTED BY THE ENGINEER.
- NOTE 4:** THE LIGHT DETECTOR FOR EAST WEST DIRECTION SHALL BE ADJUSTED TO RECEIVE EMERGENCY VEHICLE INDICATIONS APPROACHING FROM EAST ONLY DURING CONSTRUCTION STAGES PRE-STAGE 1, STAGE 1, AND STAGE 2.

THE TRAFFIC SIGNAL CONTROL EQUIPMENT FOR THIS PROJECT SHALL BE "ECONOLITE" TO MATCH THE EXISTING ADJACENT SYSTEM.

TEMPORARY CABLE PLAN

- PUSH-BUTTON NOTES**
- PUSH-BUTTON 'A' SHALL PLACE A CALL IN PHASES 2 AND 4
 - PUSH-BUTTON 'B' SHALL PLACE A CALL IN PHASES 4 AND 6
 - PUSH-BUTTON 'C' SHALL PLACE A CALL IN PHASES 6 AND 8
 - PUSH-BUTTON 'D' SHALL PLACE A CALL IN PHASES 2 AND 8

THE CONTRACTOR SHALL REMOVE THE EXISTING EMERGENCY VEHICLE PRIORITY SYSTEM DETECTOR UNITS, INCLUDING THE CONFIRMATION BEACONS, AND THE PHASING UNIT FROM THE EXISTING TRAFFIC SIGNAL INSTALLATION, STORE IT IN A SAFE MANNER, AND INSTALL THEM ON THE NEW TRAFFIC SIGNAL INSTALLATION AS SHOWN IN THE PLANS AND AS DIRECTED BY THE ENGINEER.

I.D.O.T. TRAFFIC SIGNAL INSTALLATION ELECTRICAL SERVICE REQUIREMENTS					
TYPE	NO LAMPS	WATTAGE		OPERATION	TOTAL WATTAGE
		INCAND.	LED		
SIGNAL (RED)	12	135	17	0.50	810.0
(YELLOW)	12	135	25	0.25	405.0
(GREEN)	12	135	15	0.25	405.0
ARROW	12	135	12	0.10	162.0
PED. SIGNAL	8	90	25	L.O.O.	720.0
CONTROLLER	1	100	100	L.O.O.	100.0
ILLUM. SIGN				0.05	
FLASHER				0.50	
ENERGY COSTS TO:					TOTAL =
ILLINOIS DEPARTMENT OF TRANSPORTATION 201 WEST CENTER COURT SCHAUMBURG, ILLINOIS 60196-1096					2602.0
ENERGY SUPPLY CONTACT: COMED PHONE: (866) 639-3532 COMPANY: COMED					

GO GANDHI AND ASSOCIATES, INC.
ENGINEERS AND PLANNERS
6035 N. NORTHWEST HIGHWAY
SUITE 308
CHICAGO, ILLINOIS 60631 TEL. (773) 774-5910

REVISIONS	
NAME	DATE

ILLINOIS DEPARTMENT OF TRANSPORTATION

TEMPORARY CABLE PLAN
PHASE DESIGNATION DIAGRAM AND
EMERGENCY VEHICLE PREEMPTION SEQUENCE
NAPERVILLE ROAD AT CASS AVENUE

SCALE: N.T.S.
DATE: SEPTEMBER 30, 2004

DRAWN BY: BB
DESIGNED BY: PKG
CHECKED BY: PKG